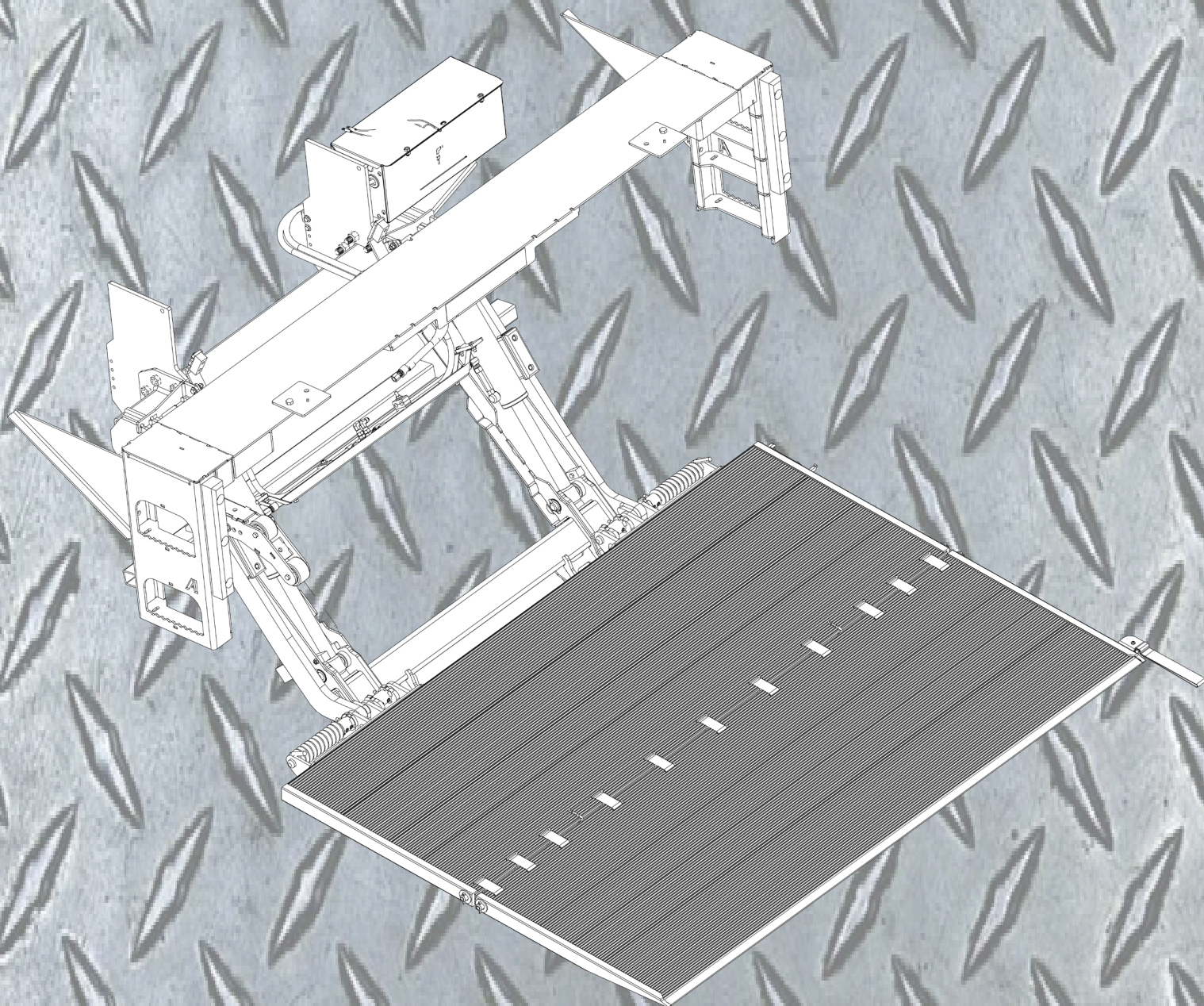


ANTHONY
LIFTGATES, INC.®

Models
MTU-GLR-3000-A-G

PARTS MANUAL



QUALITY, RELIABILITY, CUSTOMER SERVICE



Contents

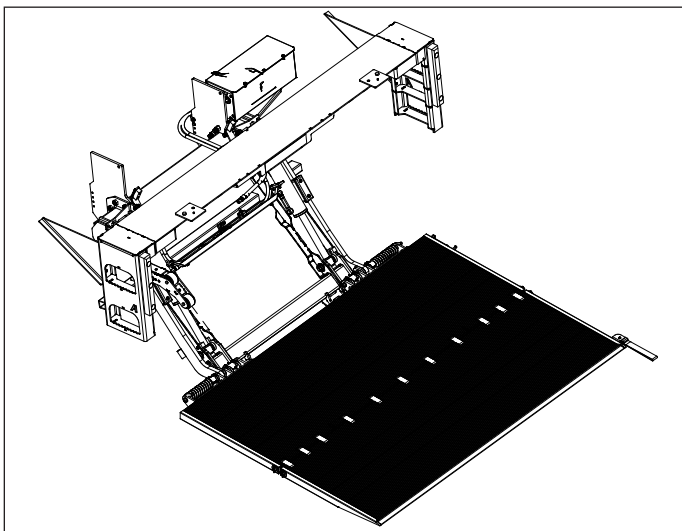
| | |
|---|----------|
| 1. GENERAL INFORMATION | 4 |
| 1.1 Introduction | 4 |
| 1.2 Assistance | 4 |
| 1.3 Serial Number | 4 |
| 1.4 Replacement Safety Signs (Decals) | 4 |
| 2. SAFETY | 5 |
| 2.1 Safety is Your Responsibility | 5 |
| 2.2 General Safety Rules | 5 |
| 3. REPLACEMENT PARTS | 6 |
| 3.1 Liftgate Assembly | 6 |
| 3.2 A-141687-G Platform (84 x 60 No Cart Stops) . 10 | 10 |
| 3.3 A-141688-G Platform (84 x 60 with Cart Stops) 12 | 12 |
| 3.4 Power Unit | 14 |
| 3.5 Switch | 15 |
| 3.6 Wiring And Miscellaneous Accessories | 16 |
| 3.7 Decals | 17 |

1. General Information

1.1 Introduction

Congratulations on selecting an Anthony MTU-GLR-3000-A-G Liftgate. Anthony Liftgates are among the finest liftgates available on the market today and are factory-assembled, energized, and tested to ensure the highest quality performance standards. MTU Liftgates ship completely assembled for fast, clean, and easy installation.

To ensure your liftgate will perform to your expectations, we have provided this Parts Manual, which is designed to provide you with the necessary part numbers for the maintenance of the MTU-GLR-3000-A-G liftgates.



1.2 Assistance

Anthony Liftgates manufactures high-quality liftgates that require very little maintenance or repair. However, should a part break, become damaged, or need replacement due to normal part wear, our knowledgeable dealers can make sure you receive the part(s) to put your liftgate back into operation.

To find the most current version of all reference material or for additional information, refer to the Anthony Liftgates website at www.anthonyliftgates.com.

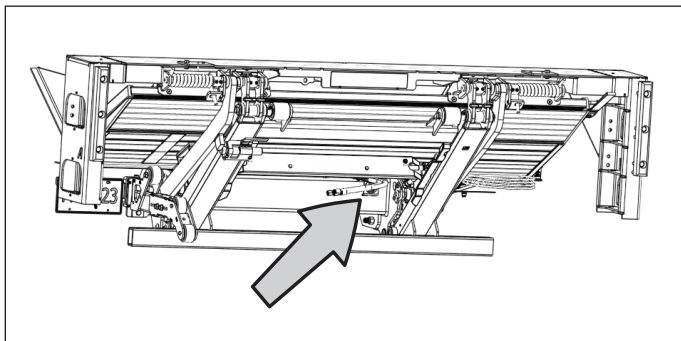
If you have any doubts or questions, call us. Before doing so, have the serial number, model number, and lift capacity of your liftgate available.

Anthony Liftgates, Inc.
1037 West Howard Street
Pontiac, Illinois 61764
(815) 842-3383 or 800-482-0003

1.3 Serial Number

Before calling for warranty or other product information, have the serial number, model number, and lift capacity of your liftgate available. This information is stamped into the identification plate on the side of the rail and will help us verify your warranty information and your specific liftgate.

Record the serial number, model number, date of installation, and load capacity in this manual for easy reference when contacting your authorized dealer with questions.



Serial Number _____

Model Number _____

Installation Date _____

Load Capacity _____

1.4 Replacement Safety Signs (Decals)



SAFETY INSTRUCTIONS

To prevent personal injury of the end user from not being aware of safety recommendations, the owner/operator must make sure all decals are attached to the liftgate and truck and are legible.

To ensure the greatest level of safety, all decals must be attached to specified replacement parts and be legible at all times. Remember, it is the users' or maintenance personnel's responsibility to make sure these decals are attached to the replacement parts.

For service or ordering replacement parts, contact an authorized dealer by going to www.anthonyliftgates.com and selecting the FIND A DEALER tab. Enter your zip code to find the nearest authorized service location.

2. Safety

2.1 Safety is Your Responsibility

It is the responsibility of the maintenance personnel to understand proper installation of repair parts and operating procedures. Be aware of the inherent dangers in the use of this product and the tools used to install any repair parts. Read and understand all Warnings, Cautions, Notices, Safety Instructions, and Notes in this manual, on the liftgate, or on the truck.

Also, refer to the Installation or Operation Manuals for a more complete list of safety topics.

2.2 General Safety Rules

WARNING Failure to comply with the following safety instructions could result in serious injury and possibly even death if they are not understood and followed.



Manuals

Read, Understand, and Follow all related product manuals.



Do not work under the liftgate while it's in a raised position. Failure of the liftgate's structural components, while replacing parts, could cause serious crushing injuries.



Impaired User Hazard

Do not attempt to install replacement parts under the influence of drugs or alcohol.



Damaged Parts Hazard

Do not install a replacement part if it's damaged. If you believe the part has a defect, which could cause it to work improperly, you should immediately stop the installation and remedy the problem before continuing.

CAUTION

The following safety instructions are provided to help prevent potential injury. Not following these instructions may lead to injury.

Personal Protection Equipment

When maintaining the liftgate, wear a suitable protective device, such as safety glasses to protect against possible sight loss when operating or repairing equipment. Also wear other appropriate personal protective equipment which may include, but is not limited to:



- Protective shoes with slip-resistant soles
- Protective eyewear
- Protective clothing and gloves
- Hearing protection



Anthony Liftgates recommends not riding the platform; however, if the operation requires it, make sure your footing is stable before raising or lowering the platform. Always stand away from the edge. When on the ground, always stand clear of the platform when it is operating.



No Unauthorized Modifications

Do not modify the liftgate or its safety devices. Do not weld on the unit. Unauthorized modifications may affect the unit's function, or create safety hazards.



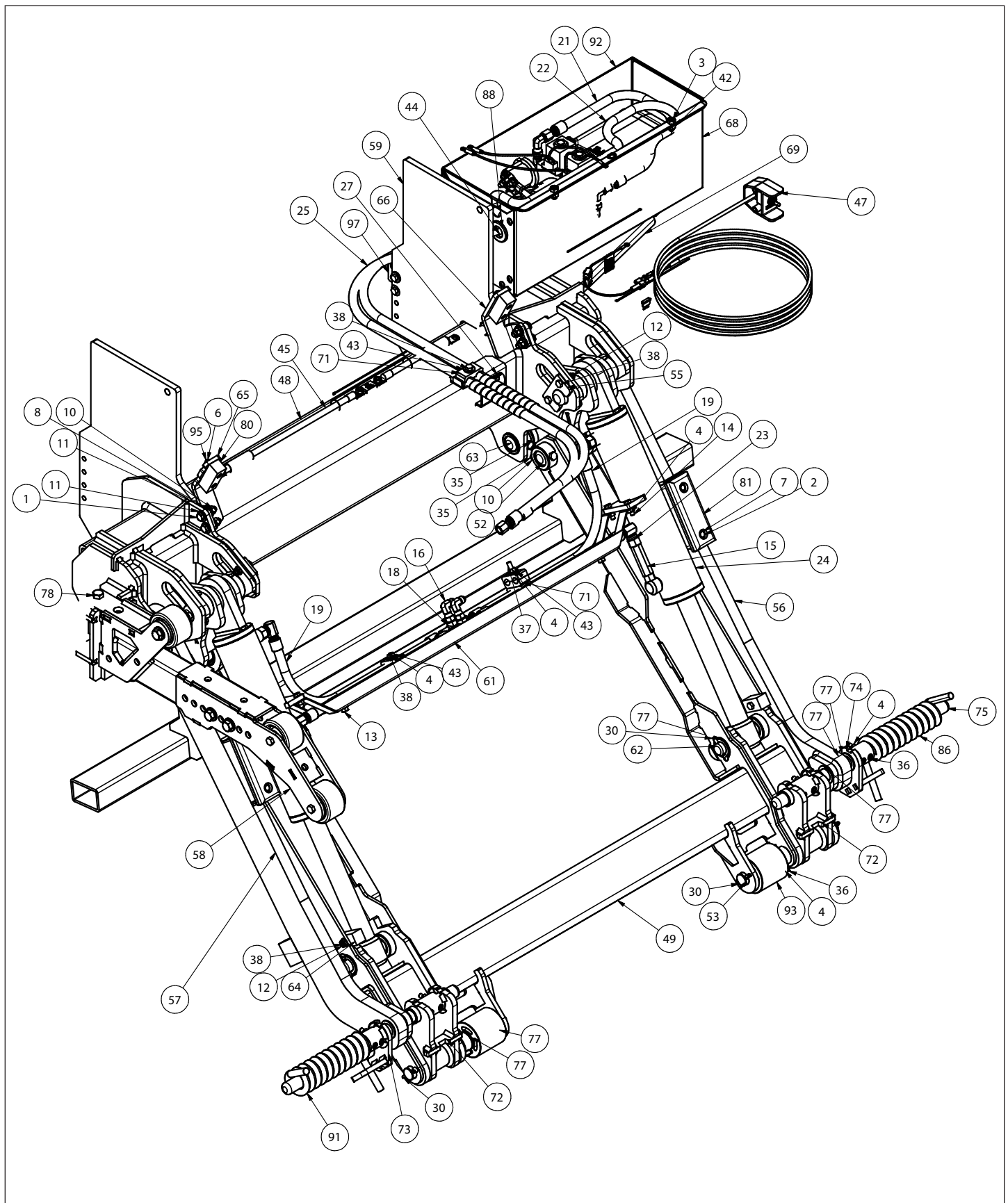
Make sure the liftgate or truck will not be damaged or made unsafe by the installation of the replacement part. Replacement parts should only be installed by a qualified installer having installation knowledge and skill.



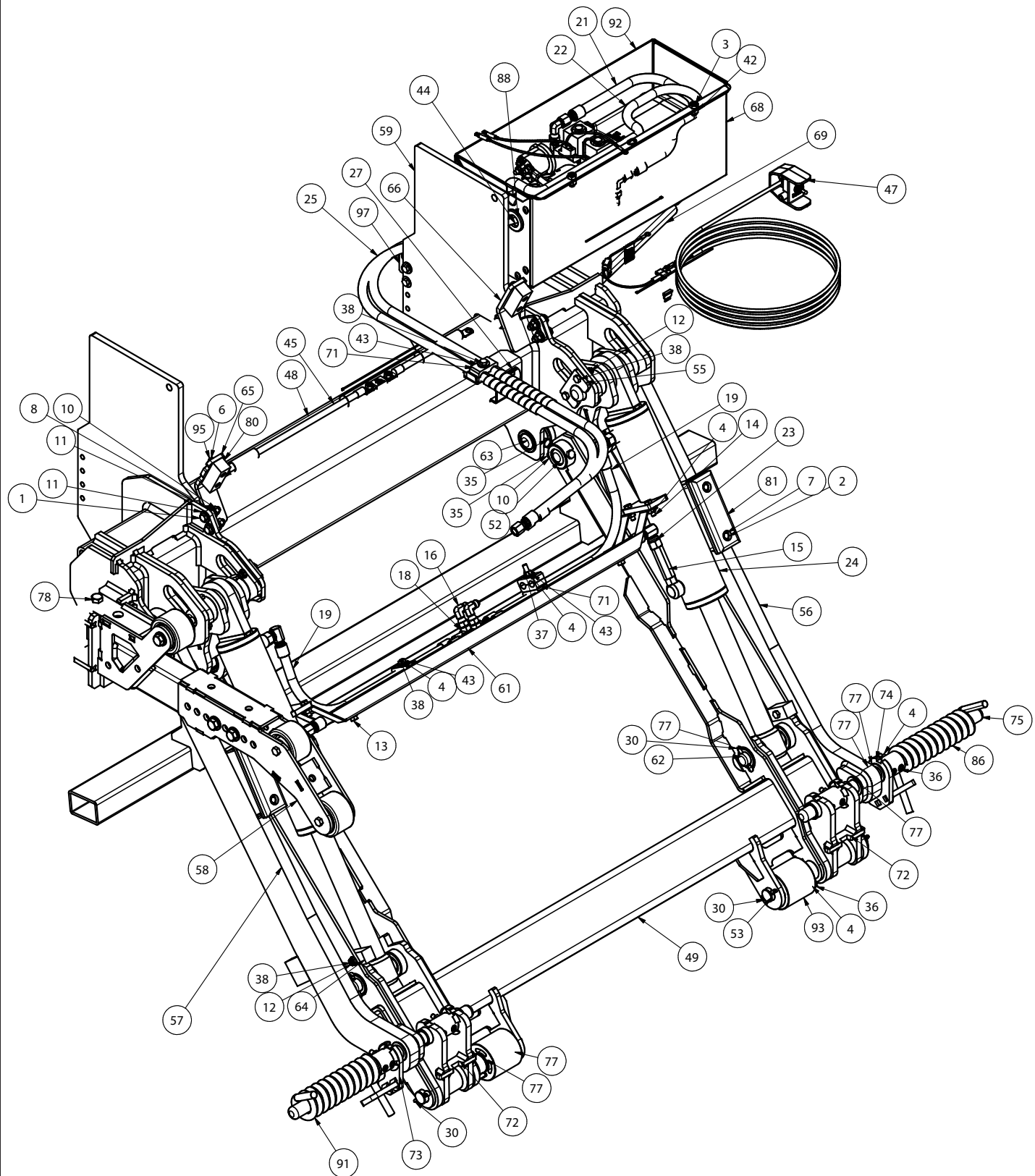
Always use genuine, factory OEM replacement parts to restore the liftgate to its original specifications. Anthony Liftgates will not accept responsibility for damages as a result of using unapproved parts. If non-OEM replacement parts are used, the warranty will be voided.

3. Replacement Parts

3.1 Liftgate Assembly



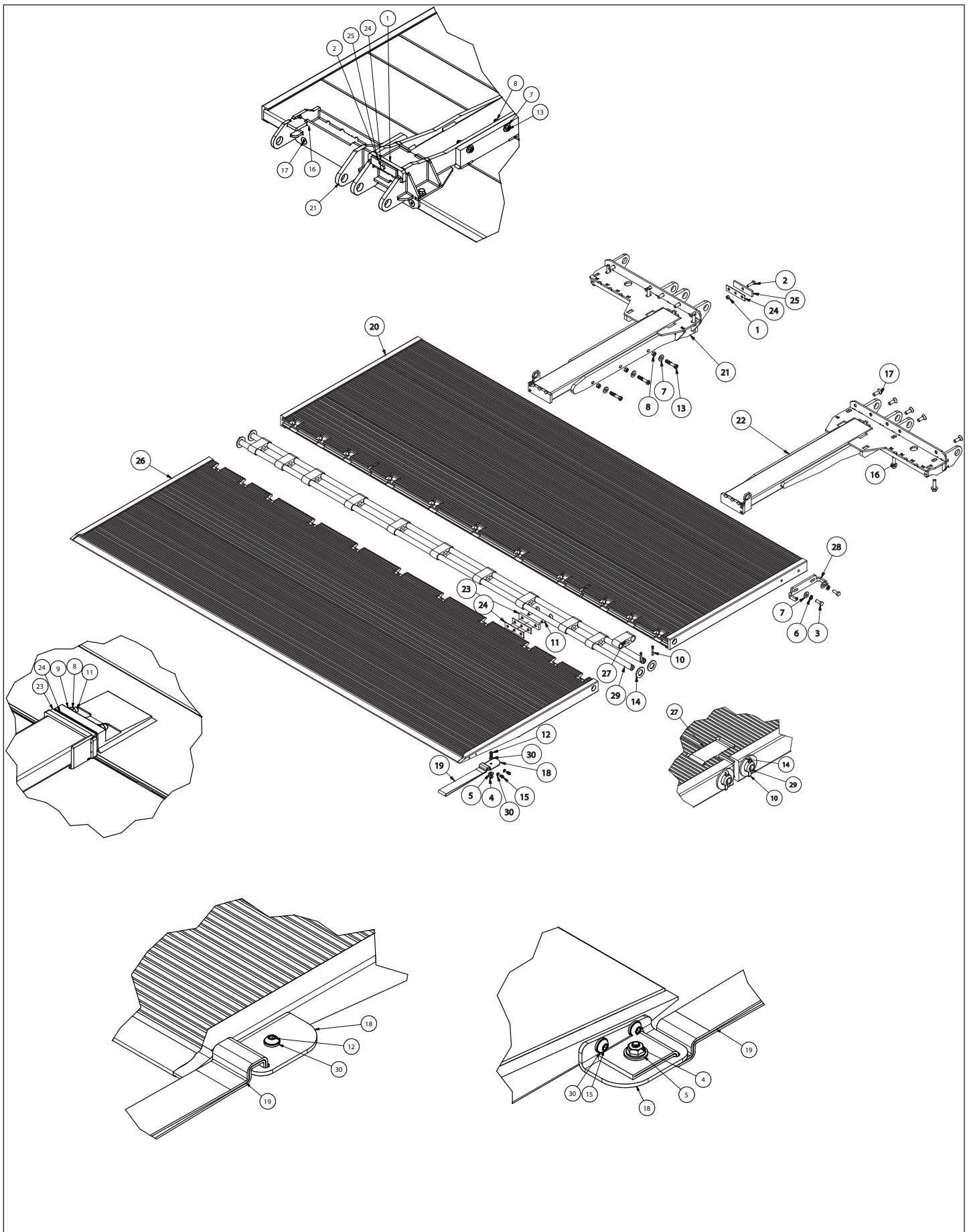
| Item | Part Number | Description | Qty. | |
|------|------------------|--|------|---|
| 1 | 25 | 3/8-16 X 1-1/2" HCS GR8 ZP | 4 | FOR SNUBBERS |
| 2 | 718 | 1/4-20 X 1" HCS GR8 ZP | 4 | FOR RADARM PAD |
| 3 | 764 | 3/8"-16 x 3/4" HH BOLT ZP | 2 | FOR PUMP BOX COVER |
| 4 | 862 | 5/16-18 LOCKNUT | 21 | (2) CAM/ROLLER PIN; (4) CAM-P/F PIN; (4) SPRING LOCK-P/F PIN; (2) LATCH; (4) HOSE TRAY-CYL; (2) PUMP BOX TO BRKT; (3) HOSE BLOCKS |
| 5 | 874 | 3/8-16 X 1" H/H C/S GR.8 ZP | 8 | PUMP AND PUMP BOX MOUNTING |
| 6 | 2029 | 1/4-20 FLANGED L/N ZP | 4 | FOR SNUBBER PAD |
| 7 | 2051 | 1/4" F/W ZP | 4 | FOR RADARM PAD |
| 8 | 2054 | 3/8 LOCK WASHER | 6 | (2) FOR MOUNTING PUMP; (4) FOR SNUBBERS |
| 9 | 2058 | 3/8 FLAT WASHER | 2 | FOR MOUNTING PUMP |
| 10 | 2064 | 3/8-16 REVERSIBLE HEX L/N ZP | 22 | (6) PUMP BOX MOUNTING; (2) RADARM TO ADFRAME; (4) CYL TO ROCKER; (2) LIFT TO ROCKER; (4) ROCKER TO ADFR; (4) FOR SNUBBERS |
| 11 | 2110 | 5/16" F/W ZP | 8 | FOR SNUBBERS |
| 12 | 2114 | 5/16-18 SERRATED FLANGED L/N ZP | 8 | (4) FOR ROCKER LOCK; (2) HOSE CLAMPS; (2) INSTALL BLOCKS |
| 13 | 2145 | 5/16-18 X 3/4" FLANGE BOLT, GR.8.2 ZP | 2 | FOR HOSE CLAMPS TO HOSE TRAY |
| 14 | 6608 | 5/16-18 X 1" HEX BOLT | 6 | (2) LATCH; (4) HOSE TRAY |
| 15 | A-130100 | RESTRICTOR VALVE 1.50 GPM SAE | 2 | ON CYLINDER |
| 16 | A-130142 | FITTING: 06MJ-06FJS 90DEG ELBOW | 2 | IN HOSE TRAY |
| 17 | A-130158 | FITTING -06 BULKHEAD LOCKNUT | 4 | ON PUMP BOX |
| 18 | A-130205 | FITTING: 06MJ-06MJ-06MJ TEE | 2 | IN HOSE TRAY |
| 19 | A-130213 | HOSE - 3/8" X 22", 6FJX-6MBX90 | 2 | TO UPPER CYLINDER PORT |
| 20 | A-130339 | 0.668 ID X .086 POLY SLEEVE HOSE GUARD | 2-6" | |
| 21 | A-130381 port c1 | PUMP BOX, PORT C1/OUTER | 1 | IN PUMP BOX |
| 22 | A-130381 port c2 | PUMP BOX, PORT C2/INNER | 1 | IN PUMP BOX |
| 23 | A-130383 | HOSE - 3/8" X 22", 6FJX-6MBX90 | 2 | TO FLOW RESTRICTOR |
| 24 | A-130469 | CYLINDER 3" BORE X 10.75" STROKE | 2 | |
| 25 | A-130659 | HOSE - 3/8" X 60", 6FJX-6FJX | 2 | PUMP BOX TO HOSE TRAY |
| 26 | A-130661 | FITTING 06MJ-06MJ BULKHEAD 90 | 2 | ON PUMP BOX |
| 27 | A-131022 | ANTHONY SERIAL NUMBER TAG | 1 | |
| 28 | A-132011 | 3/8" EXT HD STAR L/W ZP | 2 | (2) FOR MOUNTING PUMP; (1) FOR GROUND STRAP |
| 29 | A-132024 | 1/2-13 LOCKNUT | 2 | (2) FOR WHEEL ARM; (1) FOR OPT. LIC PL BRKT |
| 30 | A-132026 | 1/4" X 1-1/2" LG COTTER PIN, 18-8 SS | 8 | 4 FOR LOWER CYL PIN; 4 FOR CAM/ROLLER PIN |
| 31 | A-132027 | 1/4" X 2-1/4" LG COTTER PIN, 18-8 SS | 2 | FOR LIFTFRAME TO ROCKER |
| 32 | A-132030 | 3/16" DIA. ALUM. RIVET, .126-.250 GRIP | 1 | FOR SERIAL TAG |
| 33 | A-132031 | 5/16-18 X 3/4" BNHD S/C/S, 18-8 SS | 2 | PUMP BOX TO BRACKET |
| 34 | A-132115 | HOSE CLAMP 5/8" DIA, .406 HOLE | 2 | IN HOSE TRAY |
| 35 | A-132127 | 3/8-16 X 2-1/2" H/H C/S GR.8 ZP COARSE | 12 | (2) RADARM TO ADFR; (4) CYL TO ROCKER; (2) LIFTF TO ROCKER; (4) ROCKER TO ADFR |
| 36 | A-132148 | 5/16-18 X 2" S/H C/S, ALLOY, GR8 ZP | 10 | (2) CAM/ROLLER PIN; (4) CAM-P/F PIN; (4) SPRING LOCK-P/F PIN |
| 37 | A-132266 | 5/16-18 x 3" H/H C/S GR.8 ZP | 1 | FOR DOUBLE HOSE BLOCKS |
| 38 | A-132321 | 5/16-18 x 1.50" HEX BOLT | 8 | (4) FOR ROCKER LOCK; (2) HOSE BLOCKS; (2) INSTALL BLOCKS |
| 39 | A-132323 | 3/4-10 NYLOCK NUT | 1 | FOR MTG PLATES (IN A-141051) |
| 40 | A-132328 | RIGID PLASTIC PLUG .281 HOLE | 2 | IN PUMP BOX |
| 41 | A-132329 | RIGID PLASTIC PLUG - .375" HOLE | 1 | IN PUMP BOX |
| 42 | A-132364 | 3/8-16 NYLOCK NUT GR5 ZP | 2 | FOR PUMP BOX COVER |
| 43 | A-132456 | 5/16" F/W .875" OD GR8 YZP | 3 | |
| 44 | A-133169 | CABLE ASSY (2GA - 2') | 1 | IN PUMP BOX, GOES TO MOUNTING PLATE |
| 45 | A-133604 | POWER CABLE 2GA-200A MEGA FUSE, 32FT | 1 | |



| Item | Part Number | Description | Qty. | |
|------|---------------|--------------------------------------|------|--|
| 46 | A-140120 | DECAL KIT & INST. PACKET - MTU-GLR-3 | 1 | |
| 47 | A-140213-3000 | POWER UNIT-MTU3 GEN4 | 1 | |
| 48 | A-141534-G | ADAPTER FRAME: MTU3 GEN4 | 1 | |
| 49 | A-141545-G | LIFTFRAME W/M - ICC - MTU3 GEN4 | 1 | |

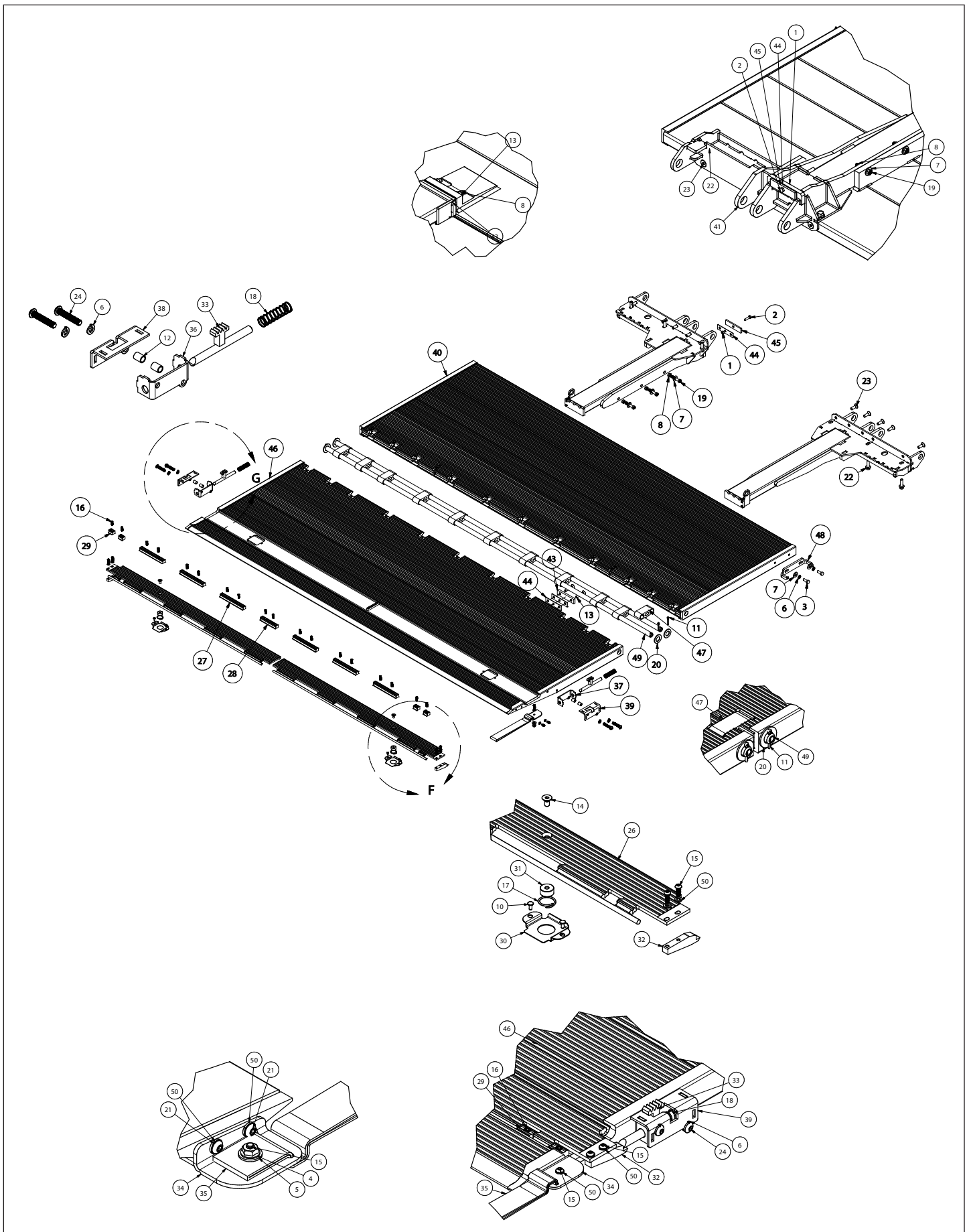
| Item | Part Number | Description | Qty. | |
|------|-------------|--|------|--|
| 50 | A-141551 | ROCKER ASSY - MTU3 GEN4 | 2 | |
| 51 | A-141561 | PIN, RADIUS ARM TO ADAPTER FRAME - MTU3 GEN4 | 2 | |
| 52 | A-141562 | PIN - ROCKER/LIFTFRAME MTU3 GEN4 | 2 | |
| 53 | A-141563 | PIN, CAM TO LIFTFRAME MTU3 GEN4 | 2 | |
| 54 | A-141564 | PIN - UPPER CYLINDER MTU3 GEN4 | 2 | |
| 55 | A-141612 | ROCKER LOCK PLATE FOR SHIPPING | 2 | |
| 56 | A-141652-G | RADIUS ARM W/BUSHINGS - RH MTU3 (36.313") | 1 | EACH USES (2) A-132321 AND (2) 2114 |
| 57 | A-141653-G | RADIUS ARM W/BUSHINGS - LH MTU3 (36.313") | 1 | |
| 58 | A-141665-G | WHEEL ARM ASSY - MTU3 3 WHEELS | 1 | |
| 59 | A-141666 | MOUNTING PLATE -3 (BOLT-ON GEN4) | 2 | SHIPPED LOOSE |
| 60 | A-141668 | LATCH PIN W/M - MTU3 (7.5") | 1 | |
| 61 | A-141670-G | HOSE TRAY - TAB END CYL (GEN4) | 1 | |
| 62 | A-141672 | PIN, LOWER CYLINDER MTU3 GEN4 | 2 | |
| 63 | A-141673 | PIN, ROCKER/ADAPTER FRAME MTU3 GEN4 | 2 | |
| 64 | A-141678 | CYLINDER INSTALL BLOCK MTU3/4 GEN4 | 2 | EACH USES (1) A-132321 AND (1) 2114 |
| 65 | A-141679-G | P/F SNUBBER LH 1.5" | 1 | |
| 66 | A-141680-G | P/F SNUBBER RH 1.5" | 1 | |
| 67 | A-141687-G | A/P ASSY MTU3-WR 84X60 NO CS REV 3 | 1 | |
| 68 | A-141738 | PUMP BOX RIVETED ASSY-BULKHEAD FITTINGS (8X8X21) | 1 | |
| 69 | A-141741-G | PUMP BOX MOUNT SUPPORT | 1 | |
| 70 | A-141742-G | PUMP BOX MTG BRKT - OUTBOARD MOUNT | 1 | |
| 71 | A-141764 | HOSE HOLD DOWN BLOCK | 8 | |
| 72 | A-141783 | CAM W/BUSHINGS: MTU3/WR - 4.75" GEN4 | 2 | |
| 73 | A-141788-G | SPRING LOCK W/M - LH MTU3/WR GEN4 | 1 | |
| 74 | A-141789-G | SPRING LOCK W/M - RH MTU3/WR GEN4 | 1 | |
| 75 | A-141801 | PIN, PLATFORM - MTU3-WR GEN4 H&R | 2 | |
| 76 | A-141803 | LATCH HANDLE-MTU3 GEN4 | 1 | USES (2) 6608 AND (2) 862 |
| 77 | A-144054 | 1.5 OD X 1.031 ID X 14GA. WASHER | 14 | (6) P/F PIN; (4) ROLLER PIN; (4) LOWER CYL PIN |
| 78 | A-150072 | 1/2-13 x 1.5" H/H C/S GR.8 ZP | 2 | FOR WHEEL ARM |
| 79 | A-150601 | DECAL - MADE IN THE USA | 1 | |
| 80 | A-155037 | BUMPER PAD | 2 | SNUBBER PAD |
| 81 | A-176472 | SHORT RUNNER PAD | 2 | EACH USES (2) 718, (2) 2051, (2) ATU-359 |
| 82 | A-200007-G | FLOOR EXT W/M-MTU (89X12X1/4) O/B SPRINGS | 1 | |
| 83 | A-200015-G | DOCK B W/M 12X102-XD 2 STEP | 2 | |
| 84 | A-200107-G | DOCK B GUSSET - LH XD | 1 | |
| 85 | A-200108-G | DOCK B GUSSET - RH XD | 1 | |
| 86 | ATU-100-L | PLATFORM SPRING - STREETSIDE | 1 | |
| 87 | ATU-134 | 1-7/8" OD X 1-17/64" ID X 10 GA BUSHING | 2 | LIFTFRAME TO ROCKER PIN |
| 88 | ATU-137 | GROMMET WITH HOLE FOR 1.375" HOLE | 1 | IN PUMP BOX |
| 89 | ATU-359 | 1/4-20 TOP L/N GR. C ZP | 4 | FOR RADARM PAD |
| 90 | ATU-426 | SERVICE FREE BUSHING 1.25 OD X 1.00 ID X 1.00 | 4 | IN LIFTFRAME AT LOWER CYL PIN |
| 91 | ATU-518-R | PLATFORM SPRING - RH | 1 | |
| 92 | ATU-533 | PUMP BOX COVER (8X8X21) | 1 | |
| 93 | ATU-1148 | AE ROLLER (2.875") | 2 | |
| 94 | ATU-1506 | DECAL: ANTHONY CAUTION MOVING PARTS | 1 | |
| 95 | S-047004 | 1/4-20 X 1" SLOTTED RDHD M/S ZP | 4 | FOR SNUBBER PAD |
| 96 | A-141051 | MTU BOLT KIT FOR INSTALL | 1 | SHIPPING BOX |
| 97 | A-141819 | HOSE MOUNTING LOOSE PARTS MTU3 GEN4 | 1 | SHIPPING BOX |
| 98 | A-200103 | 16" UHMW DOCK BUMPER PAD KIT W/ BOLTS | 1 | SHIPPING BOX |

3.2 A-141687-G Platform (84 x 60 No Cart Stops)



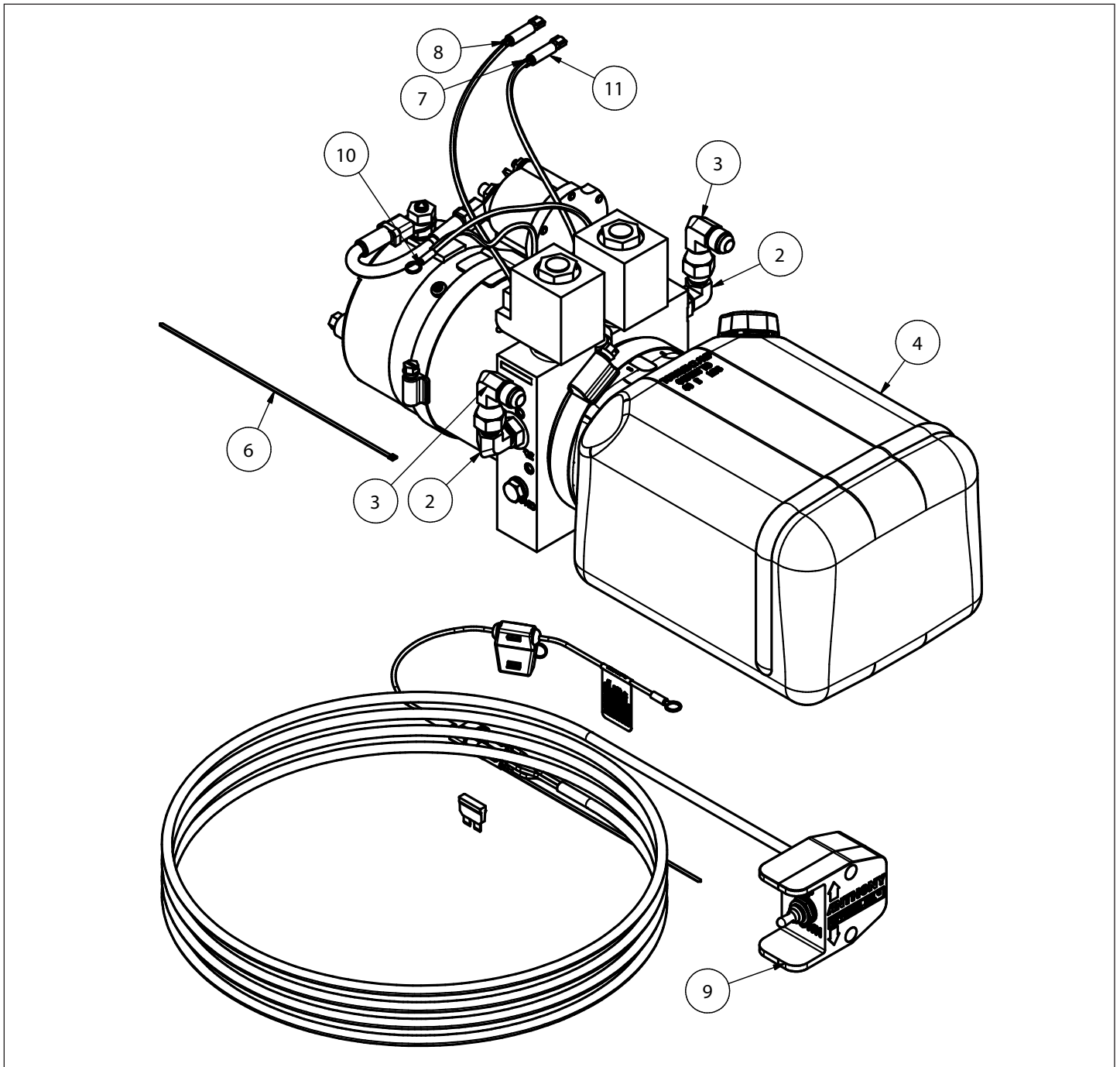
| Item | Part Number | Description | Qty. |
|------|-------------|---|------|
| 1 | 862 | 5/16-18 LOCKNUT | 2 |
| 2 | 870 | 5/16-18 x 1.250" HEX BOLT | 2 |
| 3 | 874 | 3/8-16 X 1" H/H C/S GR.8 ZP | 2 |
| 4 | 2029 | 1/4-20 FLANGED L/N ZP | 1 |
| 5 | 2051 | 1/4" F/W ZP | 1 |
| 6 | 2054 | 3/8 LOCK WASHER | 2 |
| 7 | 2058 | 3/8 FLAT WASHER | 8 |
| 8 | 2064 | 3/8-16 REVERSIBLE HEX L/N ZP | 10 |
| 9 | 2110 | 5/16" F/W ZP | 4 |
| 10 | A-132068 | 3/16" X 1-1/4" LG COTTER PIN ZP | 4 |
| 11 | A-132277 | 3/8-16 X 2" F/H S/C/S ZP | 4 |
| 12 | A-132384 | 1/4-20 X 3/4 BH S/C/S ZP | 1 |
| 13 | A-132400 | 3/8-16 X 2" PT H/H C/S GR.8 ZP | 6 |
| 14 | A-132402 | 7/8" F/W ZP | 4 |
| 15 | A-132443 | 1/4-20 X 1/2" BHSCS ZP | 2 |
| 16 | A-132445 | 7/16-14 X 1.5" SERR. FLANGE BOLT ZP | 6 |
| 17 | A-132446 | 7/16-14 X 1.25" F/H S/C/S ZP | 10 |
| 18 | A-141305 | STRAP MOUNTING ANGLE | 1 |
| 19 | A-141306 | STRAP - MTU FLIPS | 1 |
| 20 | A-141696 | A/P MAIN W/M 84X60 MTU3-WR REV3 | 1 |
| 21 | A-141702-G | HINGE ARM W/M MTU3-WR - LH REV3 | 1 |
| 22 | A-141703-G | HINGE ARM W/M MTU3-WR - RH REV3 | 1 |
| 23 | A-141774 | FLIP SHIM PLATE 4.25" | 2 |
| 24 | A-141775 | HINGE ARM CAM BLOCK SHIM 14GA MTU3 REV3 | 6 |
| 25 | A-141776 | HINGE ARM CAM BLOCK 4" MTU3 REV 3 | 2 |
| 26 | A-141777 | A/P FLIP W/M 84X60 MTU3 NO CS REV3 | 1 |
| 27 | A-151486 | AE HINGE LINK (2.5" OC) 1.5" FOR .84" ROD | 11 |
| 28 | ATU-2061 | PLATFORM STRAP HOOK | 1 |
| 29 | ATU-5350 | AE PLATFORM HINGE ROD M.84X85.25" | 2 |
| 30 | S-016001 | 1/4" MEDIUM SPLIT LOCK WASHER | 3 |

3.3 A-141688-G Platform (84 x 60 with Cart Stops)



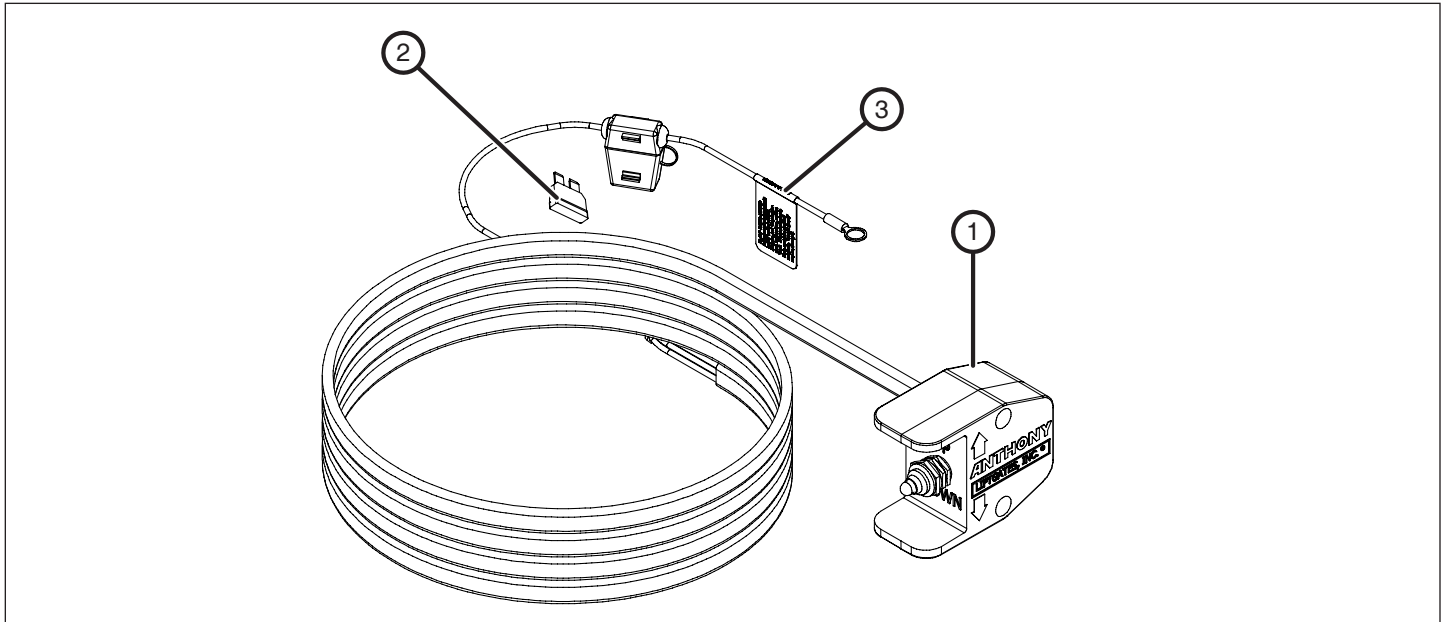
| Item | Part Number | Description | Qty. |
|------|-------------|--|------|
| 1 | 862 | 5/16-18 LOCKNUT | 2 |
| 2 | 870 | 5/16-18 x 1.250" HEX BOLT | 2 |
| 3 | 874 | 3/8-16 X 1" H/H C/S GR.8 ZP | 2 |
| 4 | 2029 | 1/4-20 FLANGED L/N ZP | 1 |
| 5 | 2051 | 1/4" F/W ZP | 1 |
| 6 | 2054 | 3/8 LOCK WASHER | 6 |
| 7 | 2058 | 3/8 FLAT WASHER | 8 |
| 8 | 2064 | 3/8-16 REVERSIBLE HEX L/N ZP | 10 |
| 9 | 2110 | 5/16" F/W ZP | 4 |
| 10 | A-132030 | 3/16" DIA. ALUM. RIVET, .126-.250 GRIP | 4 |
| 11 | A-132068 | 3/16" X 1-1/4" LG COTTER PIN ZP | 4 |
| 12 | A-132150 | SPACER .375" X .625" LG. | 4 |
| 13 | A-132277 | 3/8-16 X 2" F/H S/C/S ZP | 4 |
| 14 | A-132350 | 5/16-18 x 5/8" FH S/C/S ZP | 2 |
| 15 | A-132384 | 1/4-20 X 3/4 BH S/C/S ZP | 5 |
| 16 | A-132385 | 1/4-20 X 5/8" S/C/S ZP | 18 |
| 17 | A-132392 | CONICAL COMPRESSION SPRING 2.25"-1.125" OD X 3" LG | 2 |
| 18 | A-132393 | COMPRESSION SPRING .72" OD X 2.5" LG 9.9#/IN. | 2 |
| 19 | A-132400 | 3/8-16 X 2" PT H/H C/S GR.8 ZP | 6 |
| 20 | A-132402 | 7/8" F/W ZP | 4 |
| 21 | A-132443 | 1/4-20 X 1/2" BHSCS ZP | 2 |
| 22 | A-132445 | 7/16-14 X 1.5" SERR. FLANGE BOLT ZP | 6 |
| 23 | A-132446 | 7/16-14 X 1.25" F/H S/C/S ZP | 10 |
| 24 | A-132470 | 3/8-16 x 2" BNHD S/C/S ZP | 4 |
| 25 | A-141278 | AE CS FLIPPER H&R M42.813" LH | 1 |
| 26 | A-141279 | AE CS FLIPPER H&R M42.813" RH | 1 |
| 27 | A-141280 | AE CS LOCK M6" | 6 |
| 28 | A-141281 | AE CS LOCK M4" | 1 |
| 29 | A-141282 | AE CS LOCK M1.005" | 4 |
| 30 | A-141299 | SPRING MOUNT BASE - CART STOP | 2 |
| 31 | A-141300 | SPRING MOUNT PLUG - CARTSTOP | 2 |
| 32 | A-141301 | LATCH CATCH | 2 |
| 33 | A-141302 | LATCH PIN W/M | 2 |
| 34 | A-141305 | STRAP MOUNTING ANGLE | 1 |
| 35 | A-141306 | STRAP - MTU FLIPS | 1 |
| 36 | A-141309 | LATCH MOUNT CHANNEL - LH | 1 |
| 37 | A-141310 | LATCH MOUNT CHANNEL - RH | 1 |
| 38 | A-141311 | LATCH MOUNT COVER - LH | 1 |
| 39 | A-141312 | LATCH MOUNT COVER - RH | 1 |
| 40 | A-141696 | A/P MAIN W/M 84X60 MTU3-WR REV3 | 1 |
| 41 | A-141702-G | HINGE ARM W/M MTU3-WR - LH REV3 | 1 |
| 42 | A-141703-G | HINGE ARM W/M MTU3-WR - RH REV3 | 1 |
| 43 | A-141774 | FLIP SHIM PLATE 4.25" | 2 |
| 44 | A-141775 | HINGE ARM CAM BLOCK SHIM 14GA MTU3 REV3 | 6 |
| 45 | A-141776 | HINGE ARM CAM BLOCK 4" MTU3 REV 3 | 2 |
| 46 | A-141815 | A/P FLIP W/M 84X60 MTU3 W/CS REV3 | 1 |
| 47 | A-151486 | AE HINGE LINK (2.5" OC) 1.5" FOR .84" ROD | 11 |
| 48 | ATU-2061 | PLATFORM STRAP HOOK | 1 |
| 49 | ATU-5350 | AE PLATFORM HINGE ROD M.84X85.25" | 2 |
| 50 | S-016001 | 1/4" MEDIUM SPLIT LOCK WASHER | 7 |

3.4 Power Unit



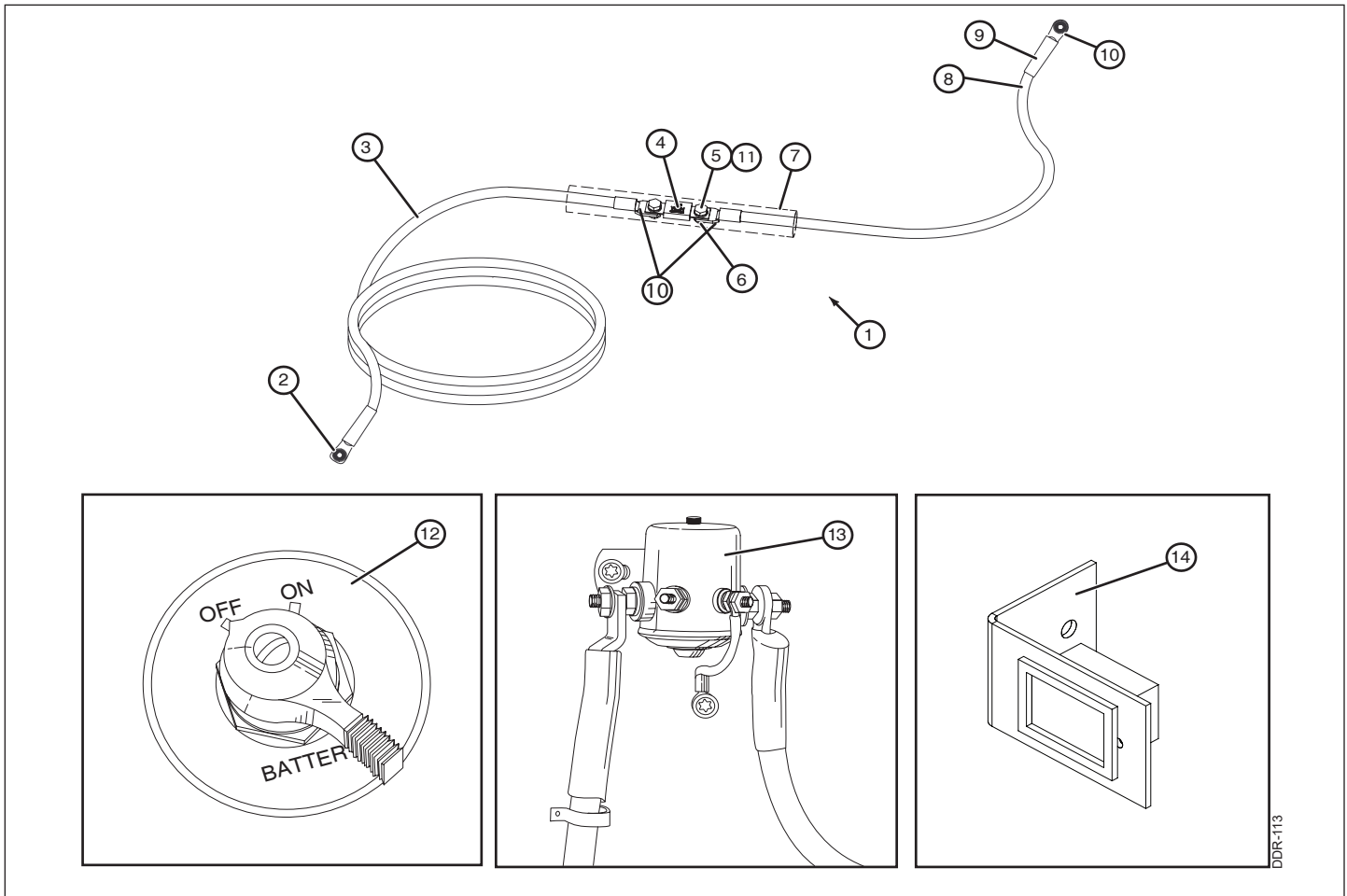
| Item | Part Number | Description | Qty. |
|------|-------------|--|--------|
| 1 | A-130094 | PEAK DEXTRON III/MERCON ATF OIL | 144 oz |
| 2 | A-130140 | FITTING: 06MJ-06MORB 90DEG ELBOW | 2 |
| 3 | A-130142 | FITTING: 06MJ-06FJS 90DEG ELBOW | 2 |
| 4 | A-130166 | POWER PACK-MTU3/DCT PD | 1 |
| 5 | A-131134 | DECAL-RES. IS FILLED W/DEXTRON ATF | 1 |
| 6 | A-132079 | SELF LKG CABLE TIE - 8" UV-RESIST | 1 |
| 7 | A-133135 | WIRE MARKER #3 | 1 |
| 8 | A-133136 | WIRE MARKER #4 | 1 |
| 9 | A-133620 | PD SWITCH ASSY W/CABLE (BLACK BOX/SPADE) | 1 |
| 10 | A-150451 | 16-14 AWG 5/16" STUD RING TERMINAL | 1 |
| 11 | A-150459 | 16-14 GA FEMALE BAYONET CONNECTOR | 2 |

3.5 Switch



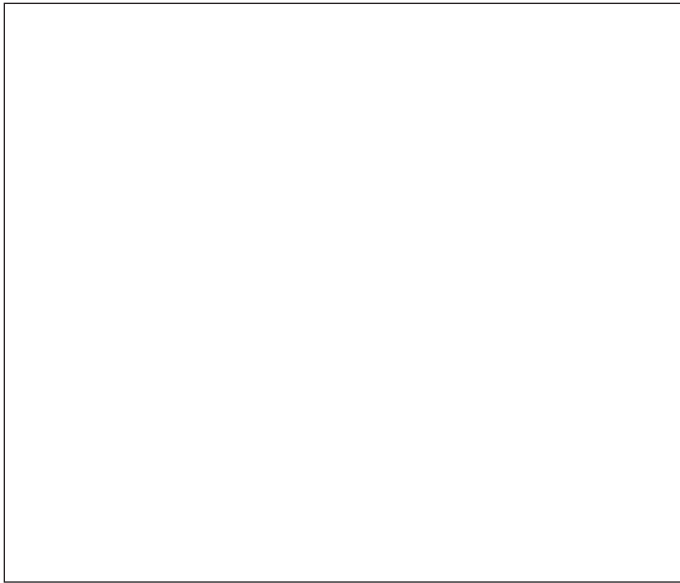
| Item | Part Number | Description | Qty. |
|------|-------------|---|------|
| 1 | A-133620 | POWER DOWN SWITCH ASSY W/CABLE (AFTER MAY 2019, NO SERVIABLE PARTS) | 1 |
| 2 | A-150438 | FUSE, 10A | 1 |
| 3 | A-131001 | DECAL: 10A FUSE & HOLDER | 1 |

3.6 Wiring And Miscellaneous Accessories



| Item | Part Number | Description | Qty. |
|------|----------------------|---|------|
| 1 | A-133604 | 36' 2/0 POWER CABLE W/FUSE ASSY. 175 AMP | 1 |
| 2 | A-133003 | 3/8" ANTI-ROTATIONAL LUG | 1 |
| 3 | A-150608-010 | 2/0 CABLE | 1 |
| 4 | A-133603 | HI-AMP FUSE, 175A | 1 |
| 5 | 5435 | 5/16-18 X .75" HEX BOLT | 2 |
| 6 | 4614 | 5/16-18 FINISHED H/N ZP | 2 |
| 7 | A-133606 | HEAT SHRINK (8") | 1 |
| 8 | A-150608-420 | 2/0 CABLE | 1 |
| 9 | A-150990 | HEAT SHRINK (2.5") | 2 |
| 10 | A-133605 | 5/16" ANTI-ROTATIONAL LUG - #4 CABLE | 3 |
| 11 | 6611 | 5/16 SPLIT LOCKWASHER | 2 |
| 12 | A-133038 A-150031 | CUT-OFF SWITCH KIT-MANUALLY OPERATING SWITCH, CUT-OFF - MANUALLY OPERATING | 1 |
| 13 | A-133036 A-150263 | SWITCH, CUT-OFF - SOLENOID KIT CUT-OFF SOLENOID | 1 |
| 14 | A-133354 | CYCLE COUNTER KIT | 1 |

3.7 Decals



| Item | Part Number | Description |
|------|-------------|---|
| | A-140120 | Decal Kit and Installation Package |
| 1 | A-131017 | Disengage Latch |
| 2 | A-131028 | Weld Warning (mounted inside pump housing) |
| 3 | A-131045 | Operating Instructions |
| 4 | A-131115 | Warning: Personal Injury Hazard |
| 5 | A-150238 | Notice: This Liftgate |
| 6 | ATU-141 | After Using Liftgate |
| 7 | ATU-147 | 3000 Lb. Maximum Capacity |
| 8 | A-131001 | 10 Amp Fuse Changing Procedure (attached to control wiring in pump box) |
| 9 | A-131133 | Hydraulic Fluid (mounted on hydraulic reservoir) |
| 10 | ATU-1506 | Caution: Moving Parts |
| 11 | A-150601 | Made in USA |

1.

Note:

Disengage "latch" before attempting to use liftgate.

Engage "latch" after using liftgate.

A-131017

2.

WELD WARNING!

For all Anthony "Service-Free" Liftgates


When performing welding during installation, service, or repair on Anthony "SF" Service-Free liftgates, the actual part being welded must be grounded. Failure to follow this instruction can cause the welding ground to travel through the high pressure hydraulic hose as the source of ground, thus causing damage to the hose from the powerful electric current. The resulting damage to the hose may or may not be visible and can cause unexpected catastrophic failure of the lift. If you have any questions, please contact Anthony Liftgates, Inc., Pontiac, Illinois, USA (800-482-0003).

A-131028

3.

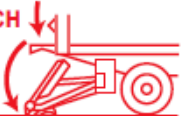
ANTHONY "MTU-GLR" SERIES LIFTGATE
OPERATING INSTRUCTIONS

1 UNLATCH LIFTGATE BY TWISTING, THEN SLIDING "LATCH PIN" IN DIRECTION OF ARROW.

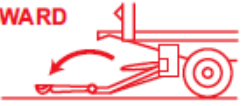


2 LOWER PLATFORM BY PUSHING CONTROL SWITCH TO "DOWN" POSITION.


PLATFORM WILL BEGIN TO OPEN AS IT LOWERS



3 UNFOLD PLATFORM BY PULLING PLATFORM HANDLE OUTWARD AND TOWARD GROUND.



4 UNFOLD "FLIP" SECTION



5 TO RAISE THE PLATFORM: PRESS THE "UP" BUTTON, PLATFORM WILL TILT UP, THEN BEGIN TO RAISE. -OR- TO LOWER THE PLATFORM: PRESS THE "DOWN" BUTTON, PLATFORM LOWERS UNTIL IT CONTACTS THE GROUND, THEN TILTS DOWNWARDS TOWARDS GROUND.

NOTE: PLATFORM RIDES THRU THE LIFTING AND LOWERING CYCLE. AS THE ROLLERS CONTACT THE GROUND WHEN LOWERING, THE PLATFORM BEGINS TILTING, CONTINUE UNTIL THE RAMP EDGE TOUCHES THE GROUND. LOAD/UNLOAD THE PLATFORM.

6 TO PLACE LIFTGATE BACK TO STORED POSITION, LOWER PLATFORM TO GROUND AND REVERSE STEPS 1, 2, 3, & 4.

ANTHONY LIFTGATES, INC

1037 WEST HOWARD ST. PONTIAC, IL 61764

A-131045

4. **ANTHONY LIFTGATES, INC.** **WARNING**

PERSONAL INJURY HAZARD

Operation may require user to stand on platform. To prevent injury or death of operators or bystanders:

- Read and follow operator/owner manual for safety, operation, inspection, and maintenance instructions.
- Do not place unstable or unsafe loads on platform.
- Do not allow loads to extend over edge of platform.
- Do not exceed capacity or use liftgate for anything other than intended purpose.
- Be aware of surroundings when operating liftgate.
- Do not allow body parts to contact moving components.
- Ensure footing is stable and stand away from edge before raising or lowering platform.
- Owner/operators must properly maintain liftgate.

A-131115

5. **NOTICE**

THIS LIFTGATE IS PROTECTED WITH AN ELECTRICAL OVERLOAD CIRCUIT PROTECTION DEVICE, EITHER A CIRCUIT BREAKER, OR A FUSE, AND IS LOCATED NEAR THE POWER SUPPLY


A-150238

6. **AFTER USING LIFTGATE, SECURE LATCH AND, IF EQUIPPED WITH POWER CUT OFF SWITCH, TURN OFF POWER TO PREVENT UNAUTHORIZED USE OF LIFTGATE.**

ATU-141

7. **3000 lb. MAXIMUM CAPACITY**

ATU-147

CAUTION  Make sure the proper "MAXIMUM CAPACITY" decal is placed on the truck for the appropriate lifting capacity of the liftgate being installed. Do not put a higher-rated decal on a liftgate with a lower capacity; this could result in liftgate damage or possibly personal injury.

8. **10 AMP FUSE & HOLDER**
Protects against dead shorts in this "control circuit".
If blown, pull "fuse holder cap", replace fuse, replace "cap". If fuse continues to blow, contact a qualified mechanic, "control circuit" may be damaged.

A-131001

10 AMP FUSE & HOLDER
Protects against dead shorts in this "control circuit".
If blown, pull "fuse holder cap", replace fuse, replace "cap". If fuse continues to blow, contact a qualified mechanic, "control circuit" may be damaged.

9. **This hydraulic reservoir is filled with Kendall Glacial Blu hydraulic fluid. Use ONLY the same or equivalent fluid.**

A-131133

Note: This oil recommendation is used only for the power open/close hydraulic circuit.

10. **ANTHONY**

CAUTION: MOVING PARTS PN: ATU-1506

11. **PROUDLY MADE IN USA**

A-150601

NOTES

A welder wearing a blue protective suit is working on a metal structure, with bright orange and yellow sparks flying from the welding point.

1037 West HOWARD ST.
P.O. BOX 615
PONTIAC, IL 61764-0615
PH: 815-842-3383
FAX: 815-844-3612
TOLL FREE: 800-482-0003
WWW.ANTHONYLIFTGATES.COM

THE ORIGINAL NAME IN LIFTGATES - SINCE 1941