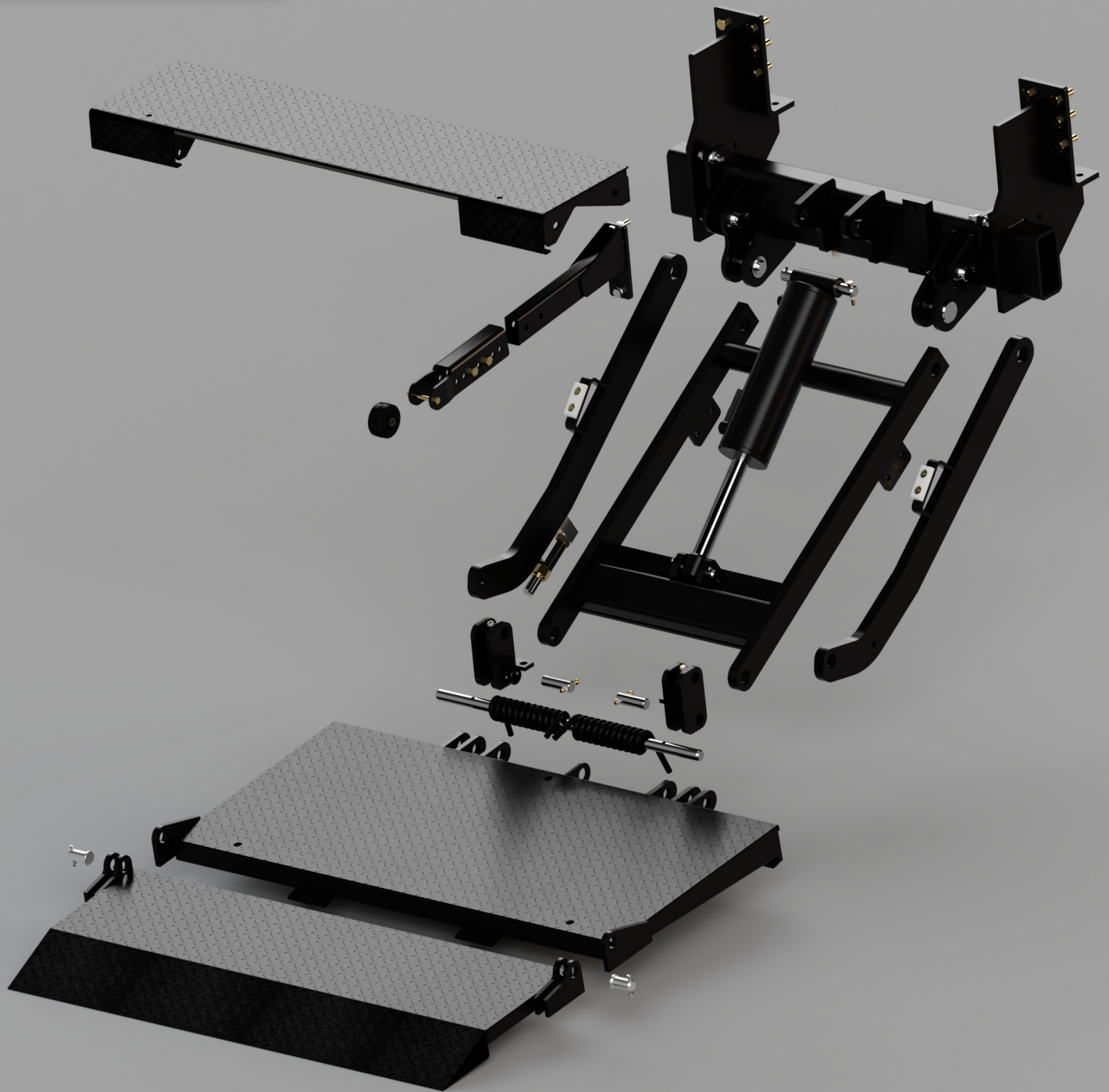


ANTHONY
LIFTGATES, INC.®

SM

SM-1800
SM-2500
SM-3000

PARTS BOOK



QUALITY, RELIABILITY, CUSTOMER SERVICE

MADE IN THE USA 

Contents

1. General Information Section	2	10. Hydraulic System	15
1.1 Introduction	2	10.1 Power Down Assembly (SM-3000-SF-RT only)	15
1.2 Serial Number	3	10.2 Gravity Down Assembly (1800, 2500, & 3000)	16
1.3 If Installation Help is Required	3	11. Platform Assemblies	17
1.4 Replacement Safety Signs (Decals)	3	11.1 48 Inch Platform Assembly (1800, 2500, & 3000)	18
2. Safety	3	11.2 72 Inch Platform Assembly (2500 Level Ride)	19
2.1 Safety is Your Responsibility	3	12. Miscellaneous Accessories	20
2.2 General Safety Rules	3	13. Safety and Instructional Decals	20
3. Nomenclature	4	13.1 General Information	20
3.1 Platform Nomenclature	4	13.2 Decal Part Numbers	20
3.2 Gravity-Down Power Unit Nomenclature	5	13.3 Decal Placement	21
3.3 Power-Down Power Unit Nomenclature	5	13.4 Decals	21
4. Standard Floor Extension & Mounting Accessories	6		
5. Pump Box Assembly	7		
6. Hydraulic Power Pack	8		
6.1 Pumps and Wiring	8		
6.2 Pump Parts - Gravity Down	9		
6.3 Pump Parts - Power Down	10		
7. Adapter Frame Assembly And Mounting Plates	11		
8. Gate Assembly	12		
9. Step Kit	14		

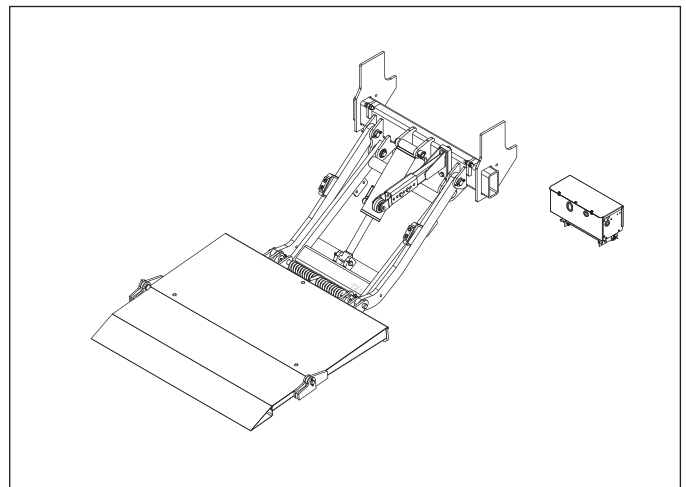
1. General Information Section

1.1 Introduction

Congratulations on selecting an Anthony Liftgates Side Mount TuckUnder™ liftgate.

All Anthony tuckunder model liftgates are factory assembled, energized, and tested to ensure the highest quality performance standards. Side Mount liftgates ship completely assembled for fast, clean, and easy installation.

To ensure your liftgate will perform to your expectations, we have provided this Parts Manual, which is designed to provide you with the necessary part numbers for the maintenance of the Side Mount TuckUnder™ liftgates.

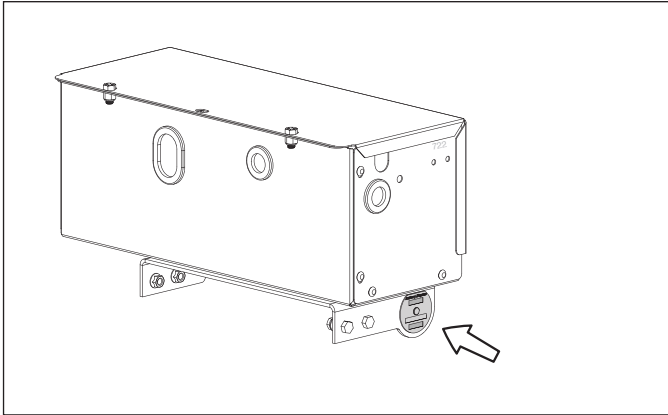


Typical Anthony Liftgates Side Mount Tuckunder Model.

1.2 Serial Number

Before calling for warranty or other product information, have the serial number, model number, and lift capacity of your liftgate available. This information is stamped into the identification plate on the side of the pump box and will help us verify your warranty information and your specific liftgate.

Record the serial number, model number, date of installation, and load capacity in the Operation Manual for easy reference when contacting your authorized dealer with questions.



Location of Serial Number Identification Plate.

1.3 If Installation Help is Required

Anthony Liftgates manufactures high-quality liftgates that require very little maintenance or repair. However, should a part break, become damaged, or need replacement due to normal part wear, our knowledgeable dealers can make sure you receive the part(s) to put your liftgate back

into operation.

To find the most current version of all reference material or for additional information, refer to the Liftgate Parts, Service & Installation Manuals tab on the **www.anthonyliftgates.com** website.

If you have any doubts or questions about installation, call us. Before doing so, have the serial number, model number, and lift capacity of your liftgate available.

Anthony Liftgates, Inc.
1037 West Howard Street
Pontiac, Illinois 61764
(815) 842-3383 or 800-482-0003

1.4 Replacement Safety Signs (Decals)

SAFETY INSTRUCTIONS



To prevent personal injury of the end user from not being aware of safety recommendations, the owner/operator must make sure all decals are attached to the liftgate and truck and are legible.

To ensure the greatest level of safety, all decals must be attached to specified replacement parts and be legible at all times. Remember, it is the users' or maintenance personnel's responsibility to make sure these decals are attached to the replacement parts.

For service or ordering replacement parts, contact an authorized dealer by going to **www.anthonyliftgates.com** and selecting the FIND A DEALER tab. Enter your zip code to find the nearest authorized service location.

2. Safety

2.1 Safety is Your Responsibility

It is the responsibility of the maintenance personnell to understand proper installation of repair parts and operating procedures. Be aware of the inherent dangers in the use of this product and the tools used to install any repair parts. Read and understand all Warnings, Cautions, Notices, Safety Instructions, and Notes in this manual, on the liftgate, or on the truck.

Also, refer to the Installation or Operation Manuals for a more complete list of safety topics.

2.2 General Safety Rules



Do not work under the liftgate while it's in a raised position. Failure of the liftgate's structural components, while replacing parts, could cause serious crushing injuries.



When installing replacement parts, wear appropriate personal protective equipment. This list may include, but is not limited to:

- A hard hat.
- Protective shoes with slip resistant soles.
- Protective goggles, glasses, or face shield.
- Protective clothing.



Do not attempt to install replacement parts under the influence of drugs or alcohol.



Do not install a replacement part if it's damaged. If you believe the part has a defect, which could cause it to work improperly, you should immediately stop the installation and remedy the problem before continuing.



Make sure the liftgate or truck will not be damaged or made unsafe by the installation of the replacement part.



Always use genuine, factory OEM replacement parts to restore the liftgate to its original specifications. Anthony Liftgates will not accept responsibility for damages as a result of using unapproved parts. If non-OEM replacement parts are used, the warranty will be voided.



Anthony Liftgates recommends not riding the platform;

however, if the operation requires it, make sure your footing is stable before raising or lowering the platform. Always stand away from the edge. When on the ground, always stand clear of the platform when it is operating.



To prevent injury, replacement parts should only be installed by a qualified installer having installation knowledge and skill.



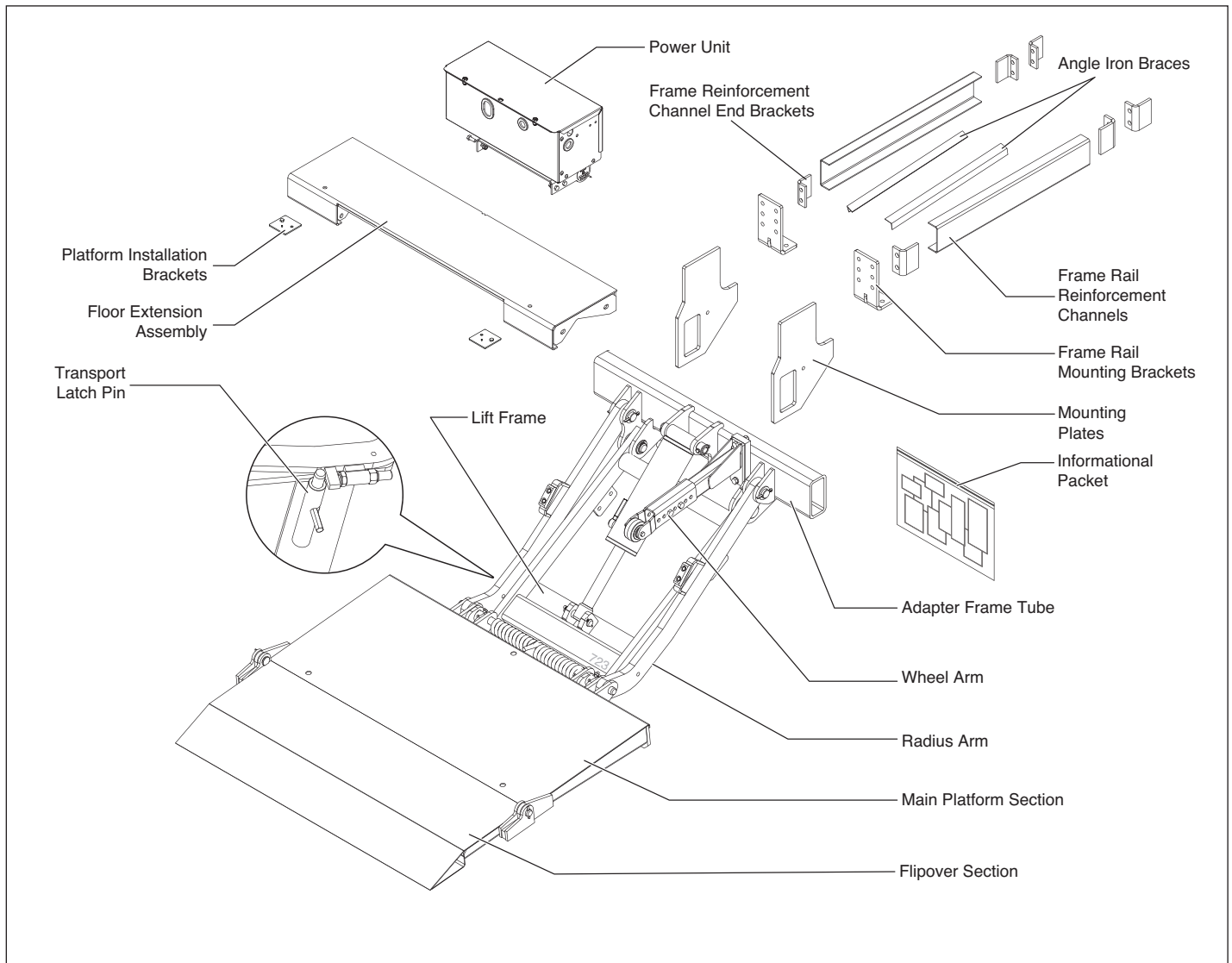
Do not modify safety devices. Unauthorized modifications may impair the liftgates function and/or safety features.



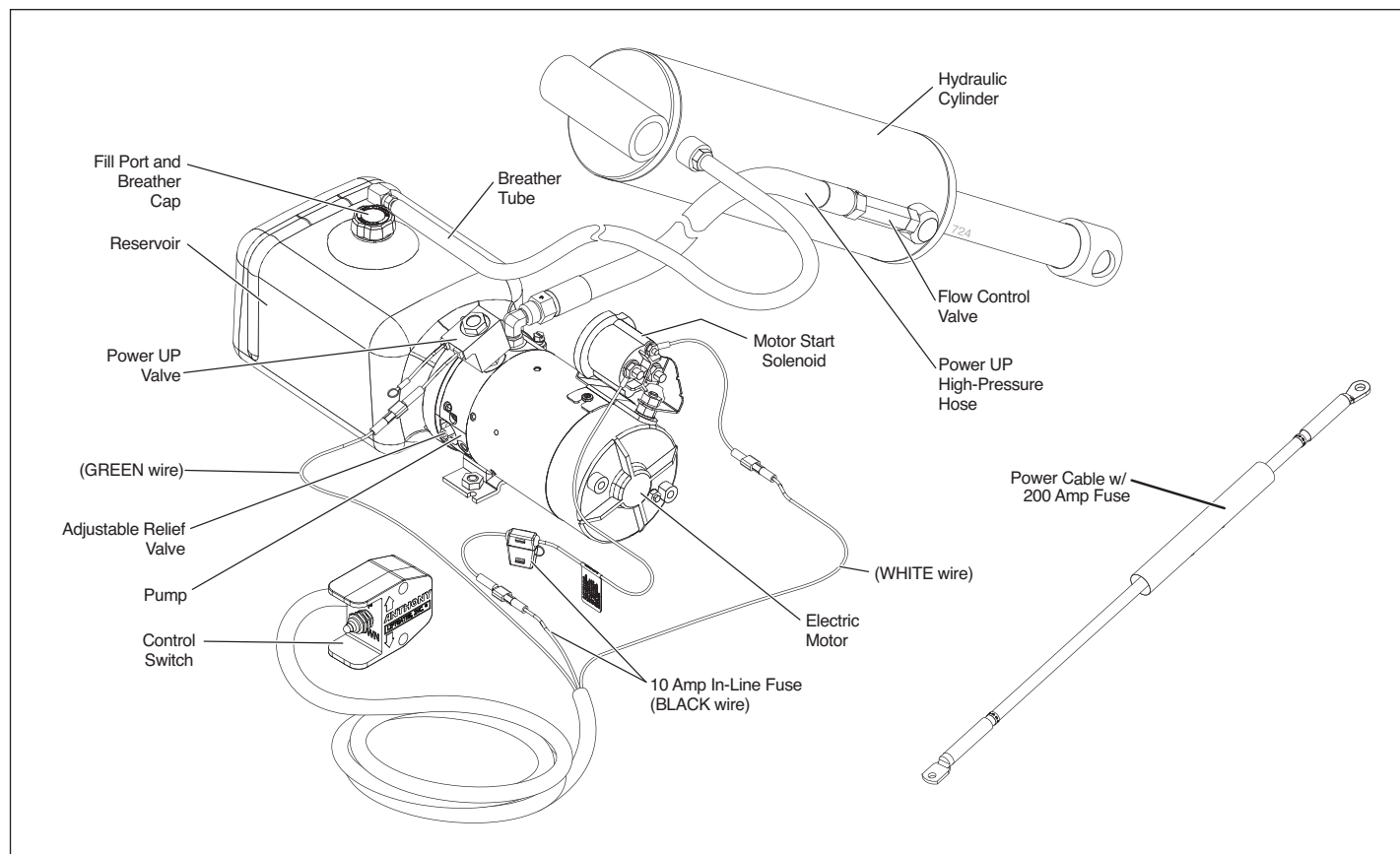
Make sure all replacement parts are in good working condition and properly installed.

3. Nomenclature

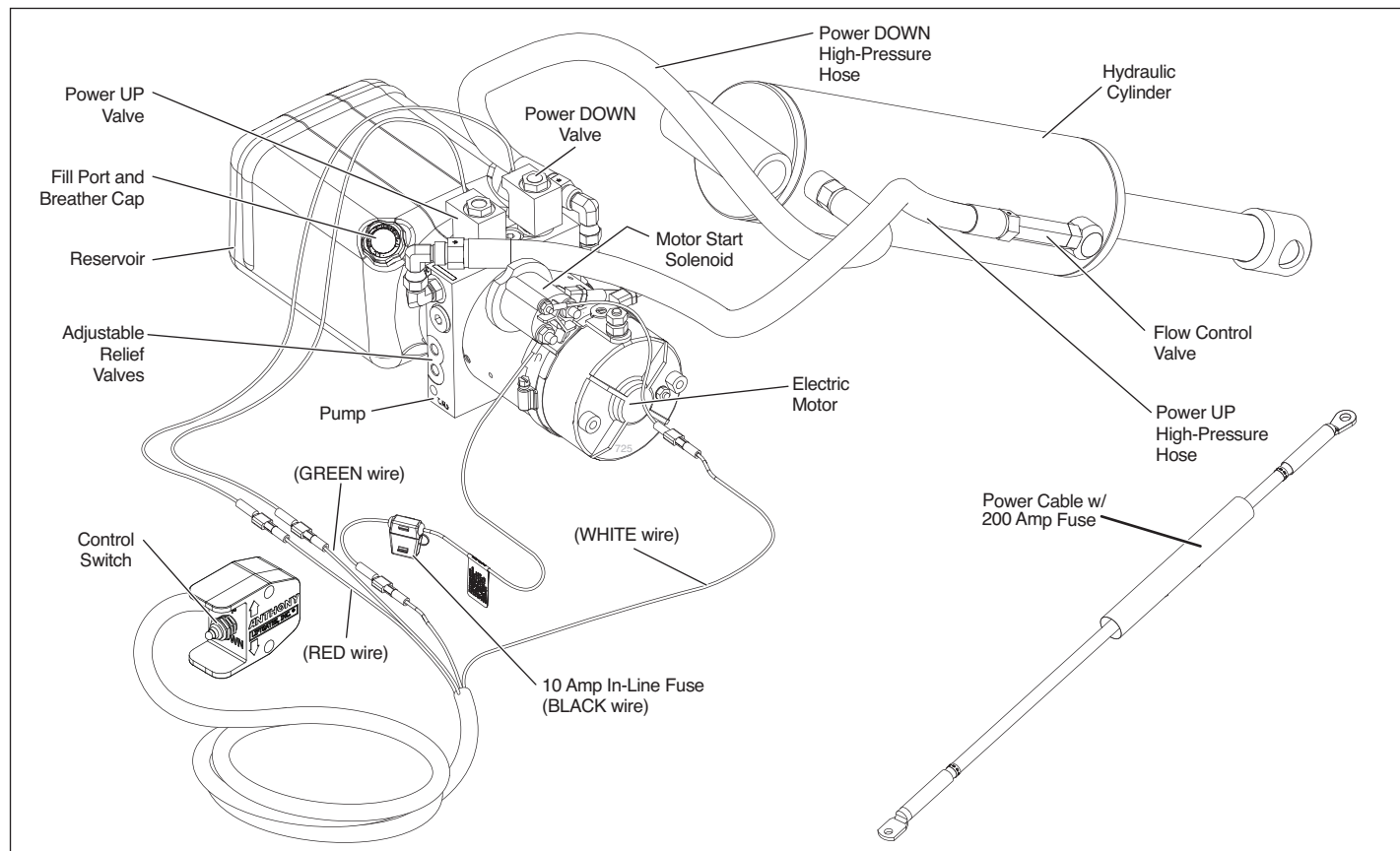
3.1 Platform Nomenclature



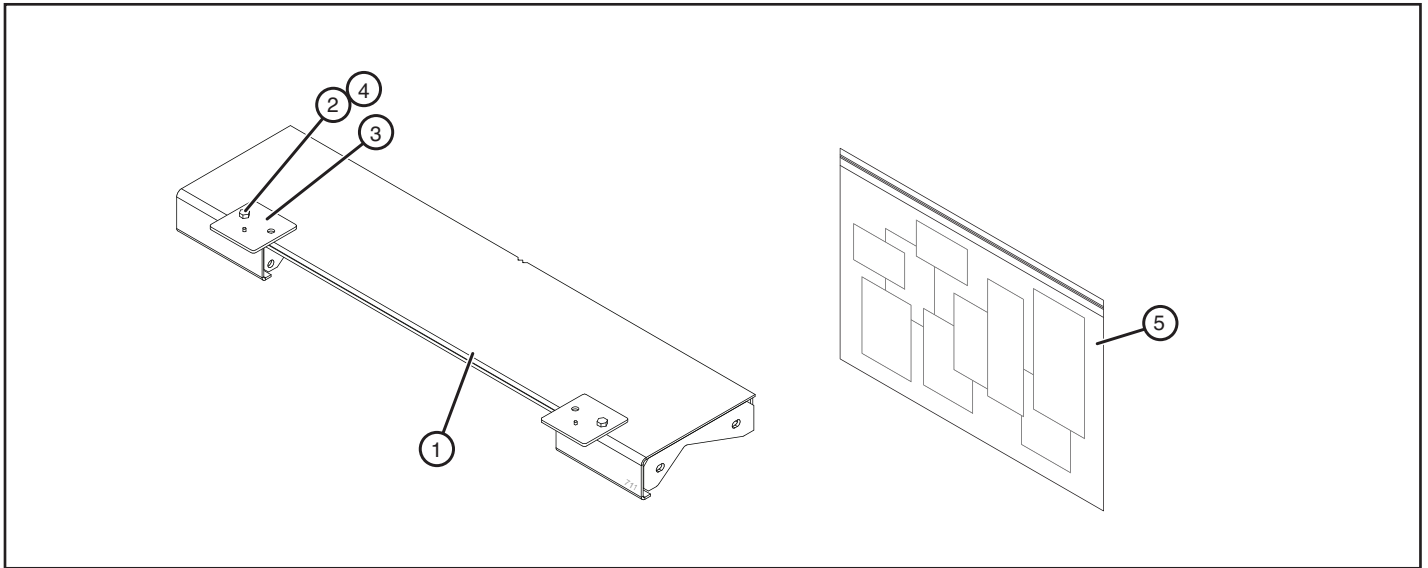
3.2 Gravity-Down Power Unit Nomenclature



3.3 Power-Down Power Unit Nomenclature

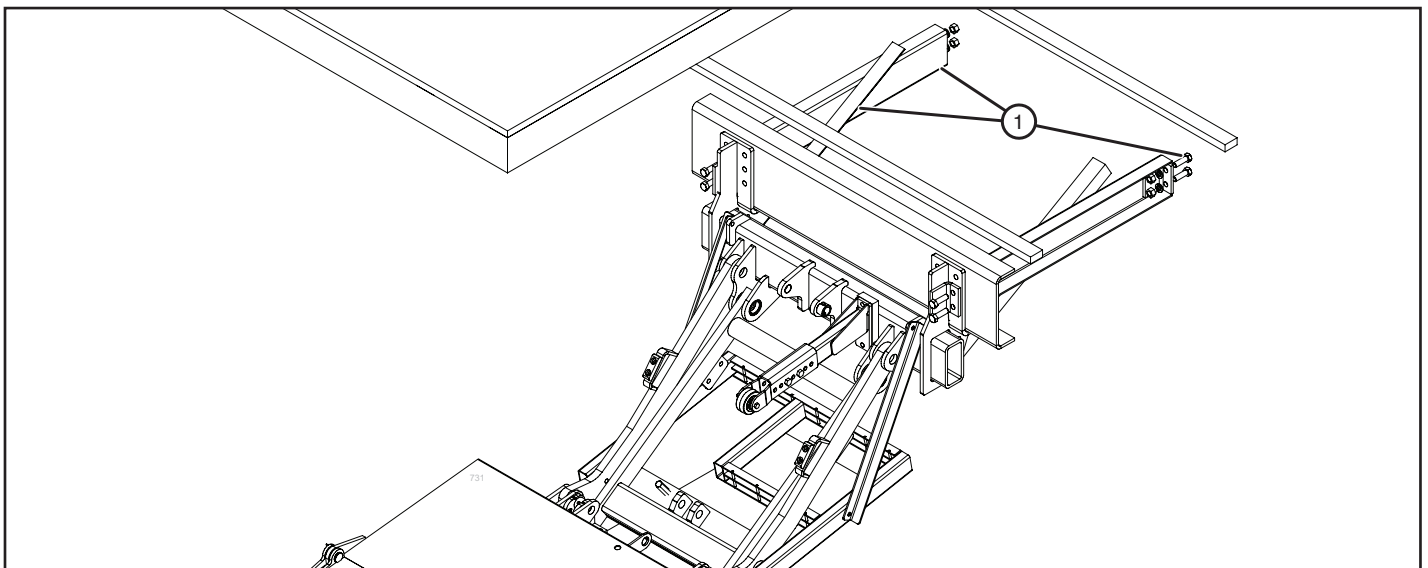


4. Standard Floor Extension & Mounting Accessories

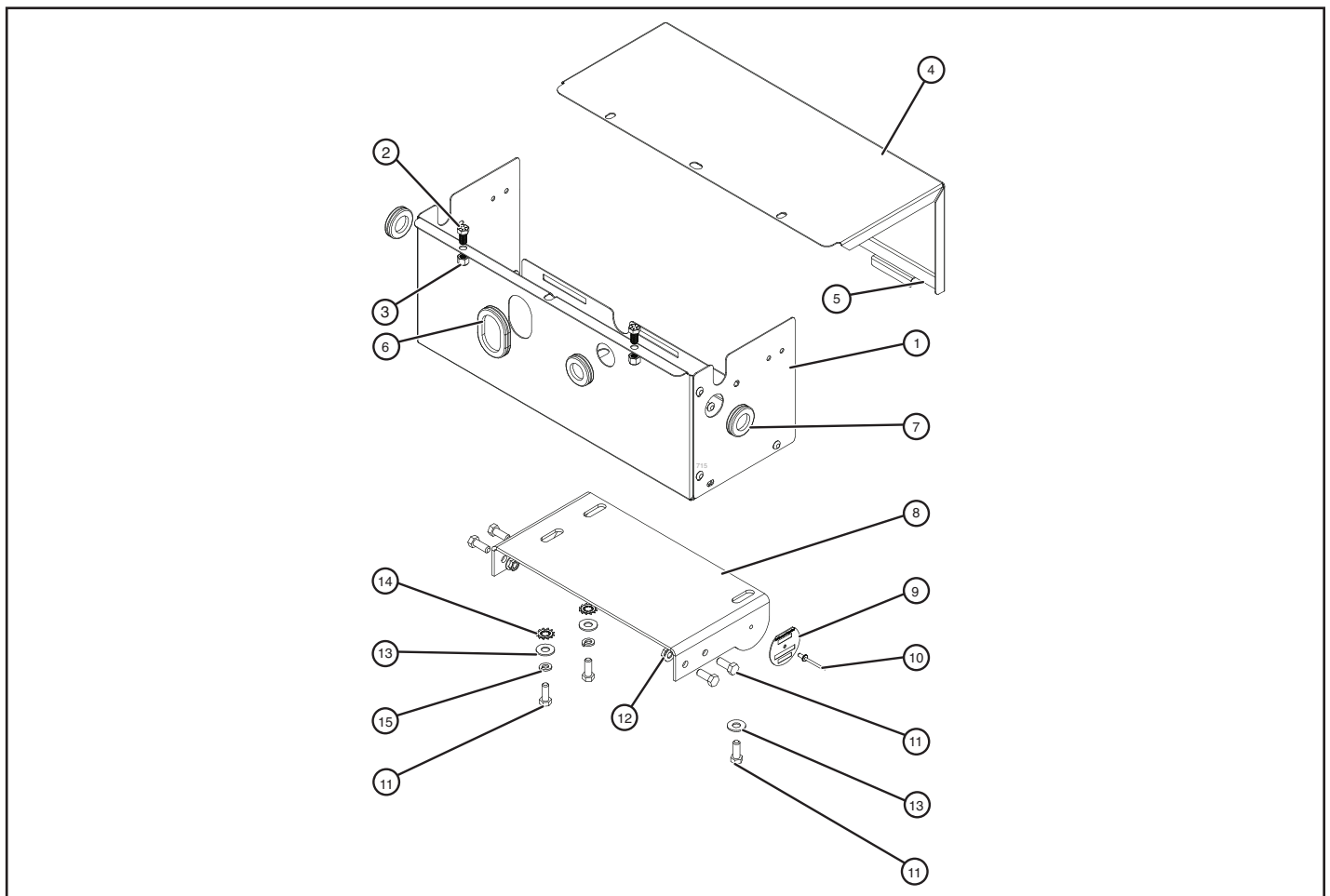


Item	Part Number	Description	Qty.
1	ATU-492	FLOOR EXTENSION - 48"	1
	ATU-493	FLOOR EXTENSION - 72"	
2	A-132085	1/2-13 X 1.0 GR8 HEX BOLT	2
3	A-140959	INSTALL BRACKET W/M	2
4	3139	1/2-13 HEX NUT GR8 ZP	2
5	ATU-717	DECAL/INSTALL KIT (1800)	1
	ATU-718	DECAL/INSTALL KIT (2500)	
	ATU-787	DECAL/INSTALL KIT (3000)	

Item	Part Number	Description	Qty.
—	ATU-878	FRAME REINFORCEMENT KIT (REFER TO SEPARATE DRAWING FOR PARTS LIST)	1



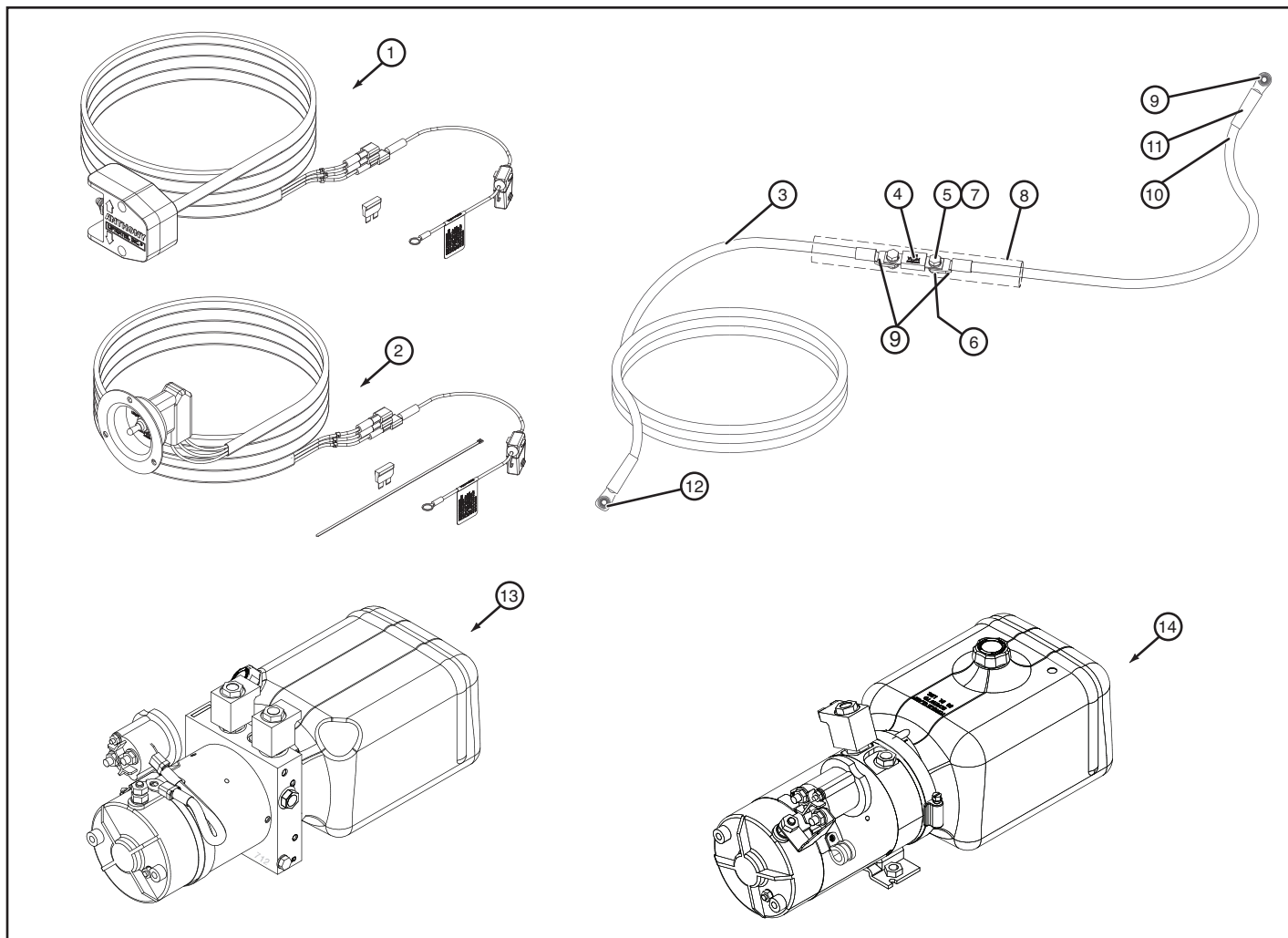
5. Pump Box Assembly



Item	Part Number	Description	Qty.
1	ATU-531	PUMP BOX RIVETED ASSEMBLY	1
2	764	3/8-16 X 3/4" GR8 HEX BOLT YZP	2
3	A-132364	3/8-16 NYLOCK NUT	2
4	ATU-533	PUMP BOX COVER	1
5	A-132200	WEATHERSTRIP, BULK - 21"	—
6	ATU-1670	GROMMET-OVAL	1
7	ATU-229	GROMMET	3
8	ATU-353-PB	PUMP BOX MOUNTING BRACKET	1
9	A-131022	SERIAL TAG	1
10	A-132030	3/16" ALUMINUM RIVET	1
11	874	3/8-16 X 1" GR8 HEX BOLT ZP	7
12	A-132038	3/8-16 SERRATED FLANGE LOCKNUT	5
13	2058	3/8 FLAT WASHER	4
14	A-132011	3/8 STAR WASHER	2
15	2054	3/8 SPLIT LOCKWASHER	5

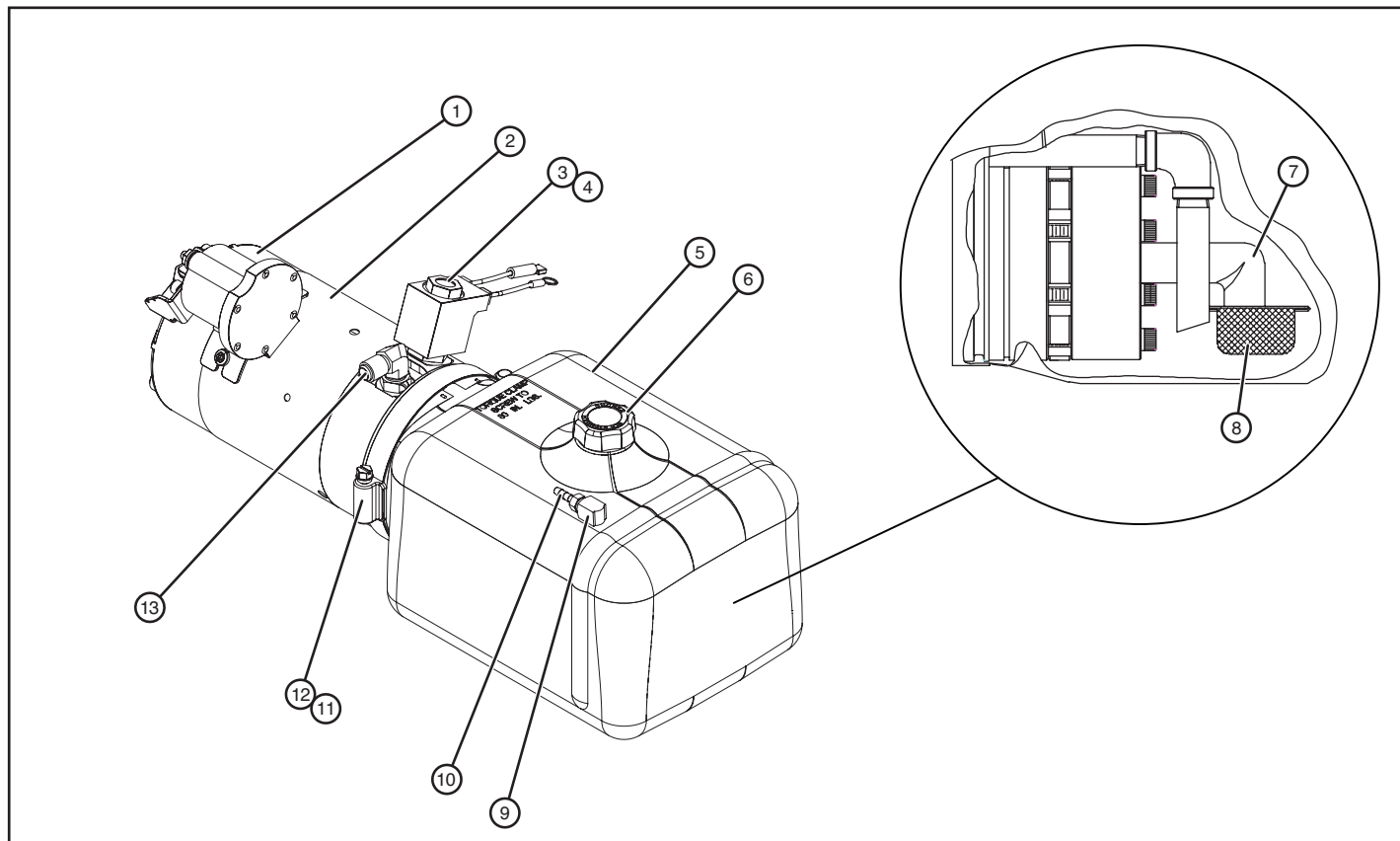
6. Hydraulic Power Pack

6.1 Pumps and Wiring



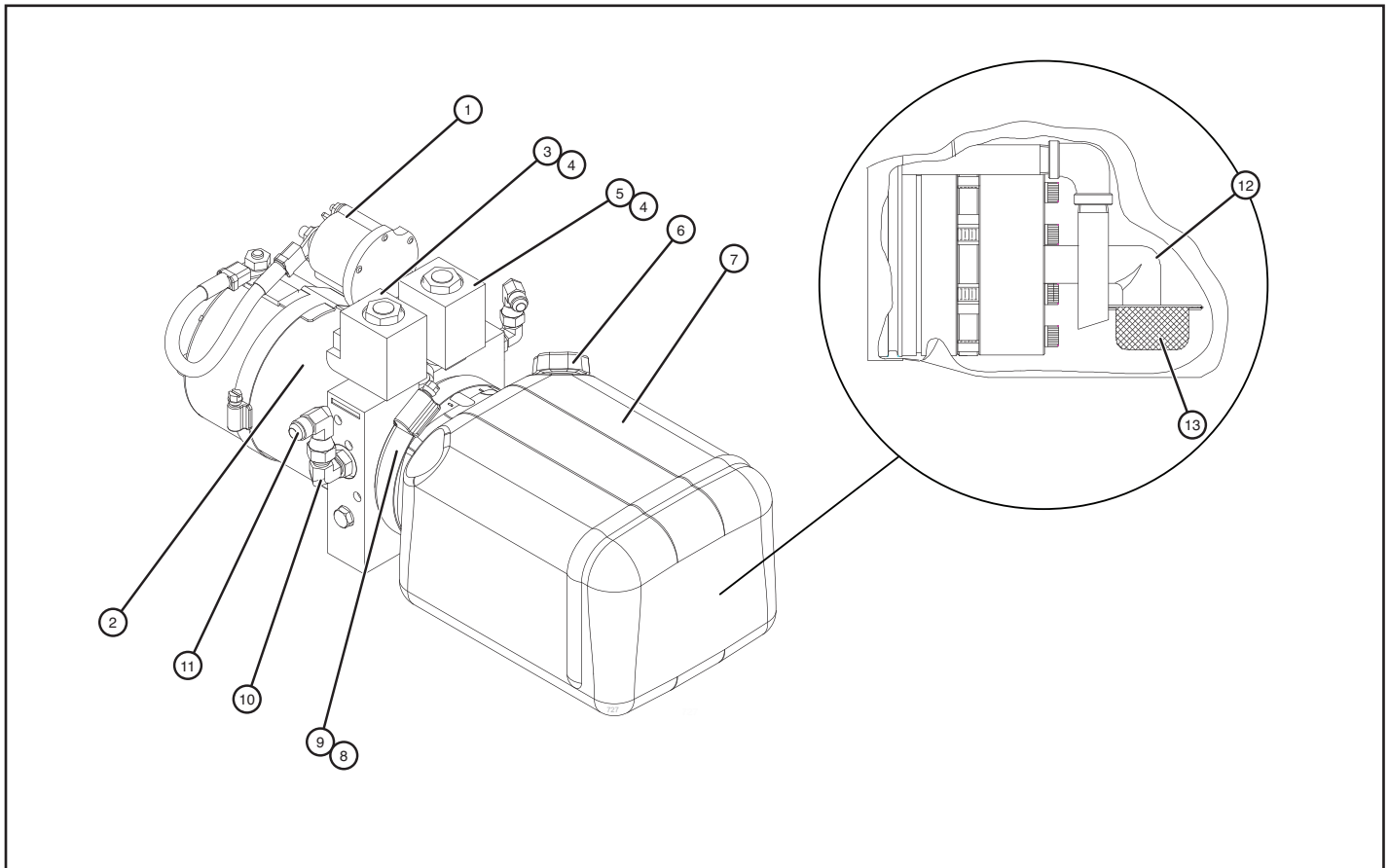
Item	Part Number	Description	Qty.
1	A-133619	GRAVITY DOWN SWITCH ASSY W/CABLE (AFTER MAY 2019, NO SERVIABLE PARTS)	—
	A-133620	POWER DOWN SWITCH ASSY W/CABLE (AFTER MAY 2019, NO SERVIABLE PARTS)	
	A-150438	REPLACEMENT FUSE, 10A	
2	A-133585	FLUSH GRAVITY DOWN CONTROL-STEEL CUP (M. SPADE)	—
	A-133556	FLUSH POWER DOWN CONTROL-STEEL CUP (M. SPADE)	
	A-150438	REPLACEMENT FUSE, 10A	
3	A-133604	POWER CABLE 2GA-200A MEGA FUSE, 30 FT (INCLUDES ITEMS 4 - 13)	1
4	A-133610	200 AMP MEGA FUSE	1
5	5434	5/16-18 X .75 HEX BOLT GR8	2
6	4614	5/16-18 FINISHED HEX NUT	2
7	6611	5/16 SPLIT LOCKWASHER	2
8	A-133606	HEAT SHRINK TUBE (8")	1
9	A-133605	5/16" ANTI-ROTATIONAL LUG - #4 CABLE	3
10	A-150608	2/0 CABLE	1
11	A-150990	HEAT SHRINK (2.5")	2
12	A-133003	3/8" ANTI-ROTATIONAL LUG	1
13	A-130117	POWER PACK UNIT, COMPLETE, POWER DOWN	1
14	A-130116	POWER PACK UNIT, COMPLETE, GRAVITY DOWN	1

6.2 Pump Parts - Gravity Down



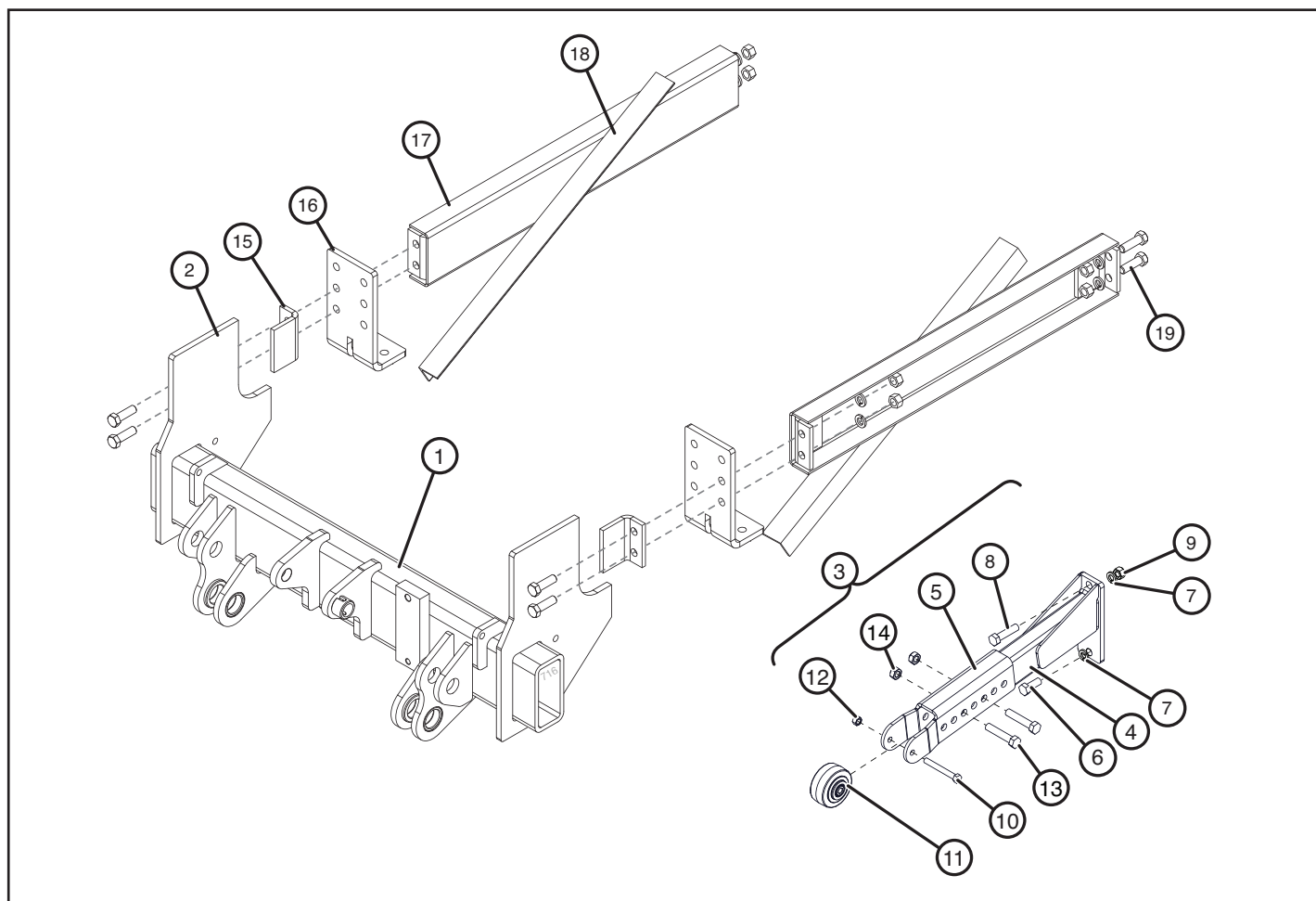
Item	Part Number	Description	Qty.
1	ATU-120	SOLENOID RELAY, MOTOR RUN, 12VDC	1
2	A-150018	MOTOR, NO THERMAL SWITCH, 12VDC	1
3	A-176315	COIL ONLY, 12VDC	1
4	A-130215	VALVE/12VDC COIL/CARTRIDGE COMBINATION (RAISE, TRIPLE O-RING, RED WIRE)	1
5	A-150635	RESERVOIR (INCLUDES FILLER/VENT CAP)	1
6	A-150546	FILLER/VENT CAP	1
7	A-150015	FILTER NIPPLE	1
8	A-150016	FILTER SCREEN	1
9	AR-18-87	BRASS STREET ELBOW 1/8" NPT 90 DEG	1
10	ATU-124	3/16 BRASS HOSE BARB X 1/8 MALE NPT	1
11	ATU-565	RESERVOIR ATTACHMENT CLAMP	1
12	A-150019	RESERVOIR ATTACHMENT O-RING	1
13	A-130140	FITTING, 06MJ-06MORB 90DEG ELBOW	1

6.3 Pump Parts - Power Down



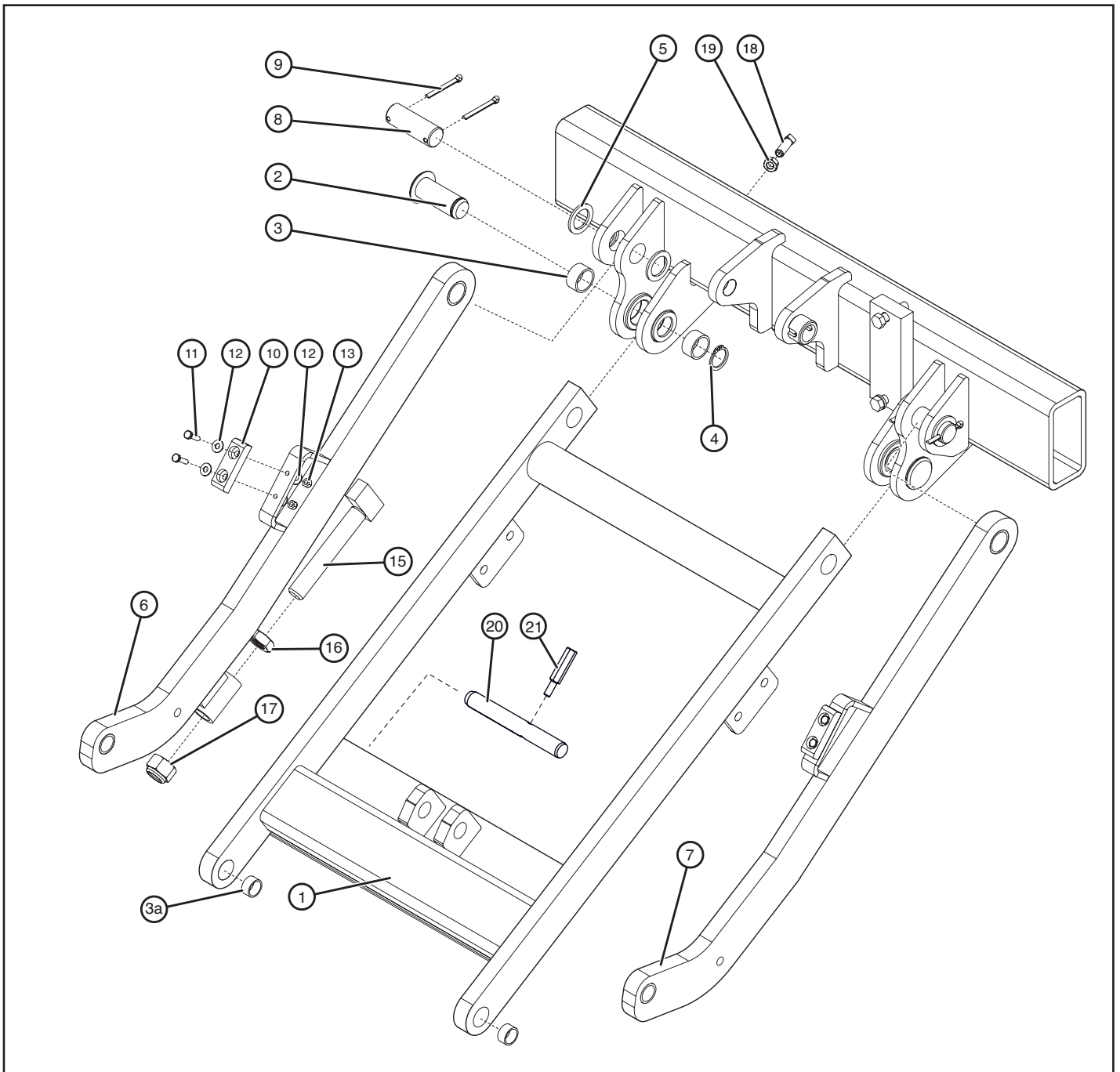
Item	Part Number	Description	Qty.
1	ATU-120	SOLENOID RELAY, MOTOR RUN, 12VDC	1
2	A-150018	MOTOR, NO THERMAL SWITCH, 12VDC	1
3	A-130216	VALVE, 12VDC COIL/CARTRIDGE COMBINATION (LOWER, SINGLE O-RING, GREEN WIRE)	1
4	A-176315	COIL ONLY, 12VDC	2
5	A-130215	VALVE, 12VDC COIL/CARTRIDGE COMBINATION (RAISE, TRIPLE O-RING, RED WIRE)	1
6	A-150546	FILLER/VENT CAP	1
7	A-150635	RESERVOIR (INCLUDES FILLER/VENT CAP)	1
8	ATU-565	RESERVOIR ATTACHMENT CLAMP	1
9	A-150019	RESERVOIR ATTACHMENT O-RING	1
10	A-130140	FITTING, 06MJ-06MORB 90DEG ELBOW	2
11	A-130142	FITTING, 06MJ-06FJS 90DEG ELBOW	2
12	A-150015	FILTER NIPPLE	1
13	A-150016	FILTER SCREEN	1

7. Adapter Frame Assembly And Mounting Plates



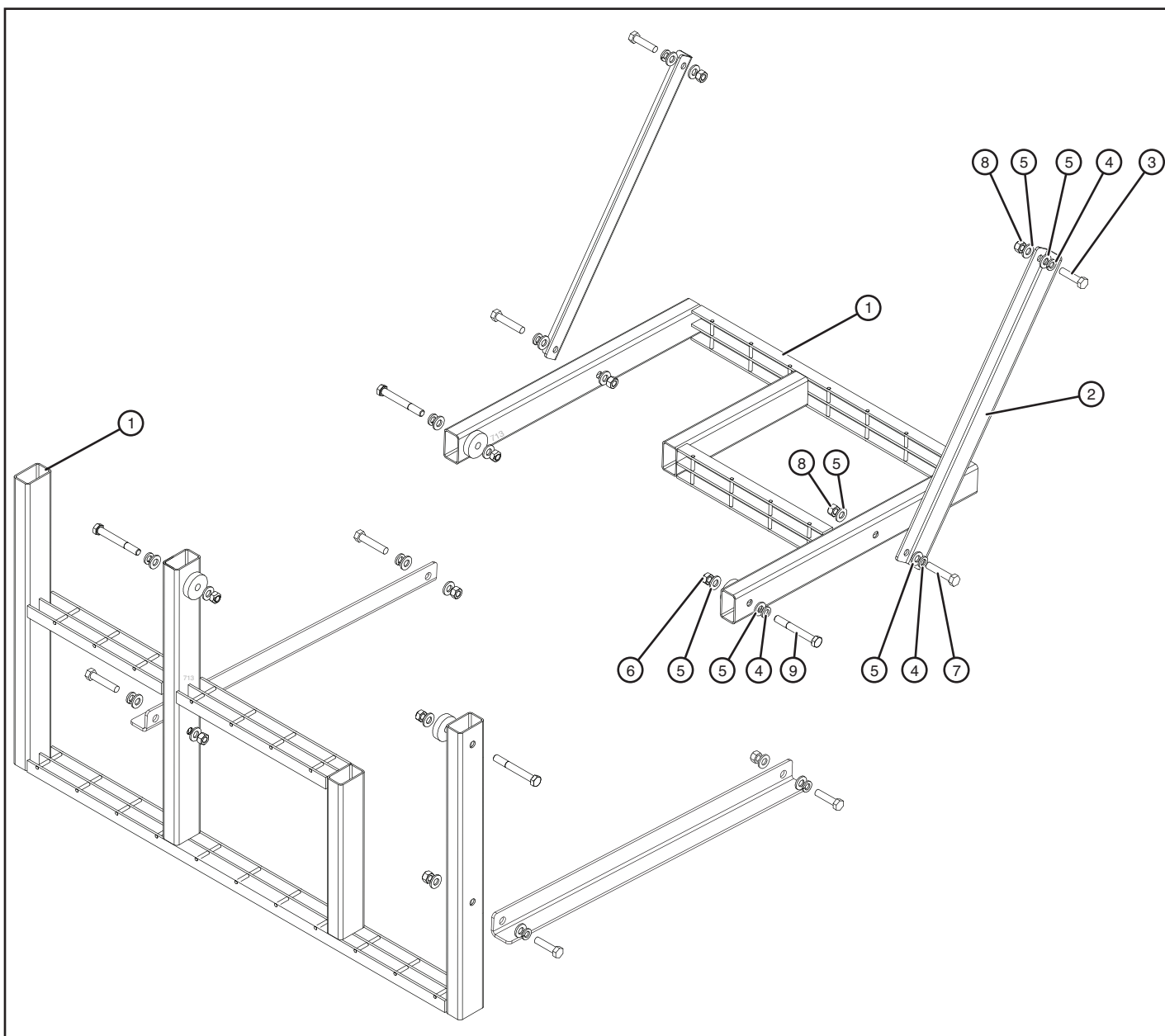
Item	Part Number	Description	Qty.
1	ATU-1675	ADAPTER FRAME W/LOOSE PARTS BOX (SM-1800-SF, SM-2500-SF, SM-3000-SF)	1
	ATU-1678	ADAPTER FRAME W/LOOSE PARTS BOX, AUX STEP (SM-LR-2500-SF)	
2	ATU-1166	MOUNTING PLATE	2
3	ATU-881	WHEEL ARM ASSY (ARM WELDMENT, CHANNEL, WHEEL)	1
4	ATU-883	WHEEL ARM BASE	1
5	ATU-886	WHEEL ARM CHANNEL	1
6	ATU-260	1/2-13 X 1.25 HEX BOLT GR8	1
7	1691	1/2" LOCKWASHER	2
8	ATU-259	1/2-13 X 2.00 HEX BOLT GR8	2
9	3139	1/2-13 HEX NUT GR8 ZP	2
10	A-132039	3/8-24 X 3" HEX BOLT GR8	1
11	ATU-795	WHEEL	1
12	2184	3/8-24 LOCKNUT	1
13	A-132112	1/2-13 X 2.50 HEX BOLT GR8	2
14	A-132024	1/2-13 LOCKNUT	2
15	SG-606-04	ANGLE BRACKET	6
16	ATU-1162	MOUNTING PLATE BRACKET 90DEG	2
17	SG-606-03	CHANNEL	2
18	SG-606-02	SUPPORT BRACE	2
19	2040	5/8-18 X 2.0 HEX BOLT GR8	8
	S-016011	5/8 LOCKWASHER	8
	S-010011	5/8-18 HEX NUT GR8 ZP	8

8. Gate Assembly



Item	Part Number	Description	Qty.
1	ATU-183	LIFTFRAME 1800	1
	ATU-187	LIFTFRAME 3000/3500	
	ATU-1503	LIFTFRAME 3000 RH LATCH	
2	ATU-1654	LIFTFRAME PIN	
3	ATU-430	BUSHING, 1.25" ID X 1.5" OD X .75" LONG (ADAPTER FRAME)	4
3a	ATU-429	BUSHING, 1" ID X 1.25" OD X 3/4" LONG (FOR ATU-183 LIFTFRAME)	2
	ATU-426	BUSHING, 1" ID X 1.25" OD X 1" LONG (FOR ATU-187 AND ATU-1503 LIFTFRAME)	
4	A-146840	SNAP RING, 1.25" EXTERNAL HD	2
5	ATU-134	WASHER, 1.875" OD X 1-17/64 ID	5 / 7
6	ATU-1590	RADIUS ARM - STREETSIDE W/BUSHINGS (1800)	1
	ATU-1584	RADIUS ARM - STREETSIDE W/BUSHINGS (2500)	
	ATU-1596	RADIUS ARM - STREETSIDE W/BUSHINGS, AUX STEP (2500 LEVEL RIDE)	
	ATU-5025	RADIUS ARM - STREETSIDE W/BUSHINGS (3000)	
7	ATU-1589	RADIUS ARM - CURBSIDE W/BUSHINGS (1800)	1
	ATU-1583	RADIUS ARM - CURBSIDE W/BUSHINGS (2500)	
	ATU-1595	RADIUS ARM - CURBSIDE W/BUSHINGS, AUX STEP (2500 LEVEL RIDE)	
	ATU-5022	RADIUS ARM - CURBSIDE W/BUSHINGS (3000)	
8	A-140046	RADIUS ARM PIN	2
9	A-132027	1/4" X 2.25" COTTER PIN, SS	4
10	A-140090	WEAR PAD/BUMPER	2
11	718	1/4-20 X 1" HEX CAP SCREW GR8 ZP	4
12	2051	1/4" FLATWASHER ZP	8
13	ATU-359	1/4-20 TOP LOCKNUT GR C ZP	4
15	ATU-5206	LATCH, ADJUSTMENT BOLT	1
16	A-132337	1-8 JAM NUT	1
17	A-132342	1-8 NYLOCK NUT GR8	1
18	S-094005	1/2-13 X 1.5 SQHD KNURLED CUP SET SCREW	2
19	880	1/2-13 FINISHED HEX JAM NUT GR8	2
20	ATU-556	PIN LOCK, LATCH	1
21	ATU-557	HANDLE, LATCH	1

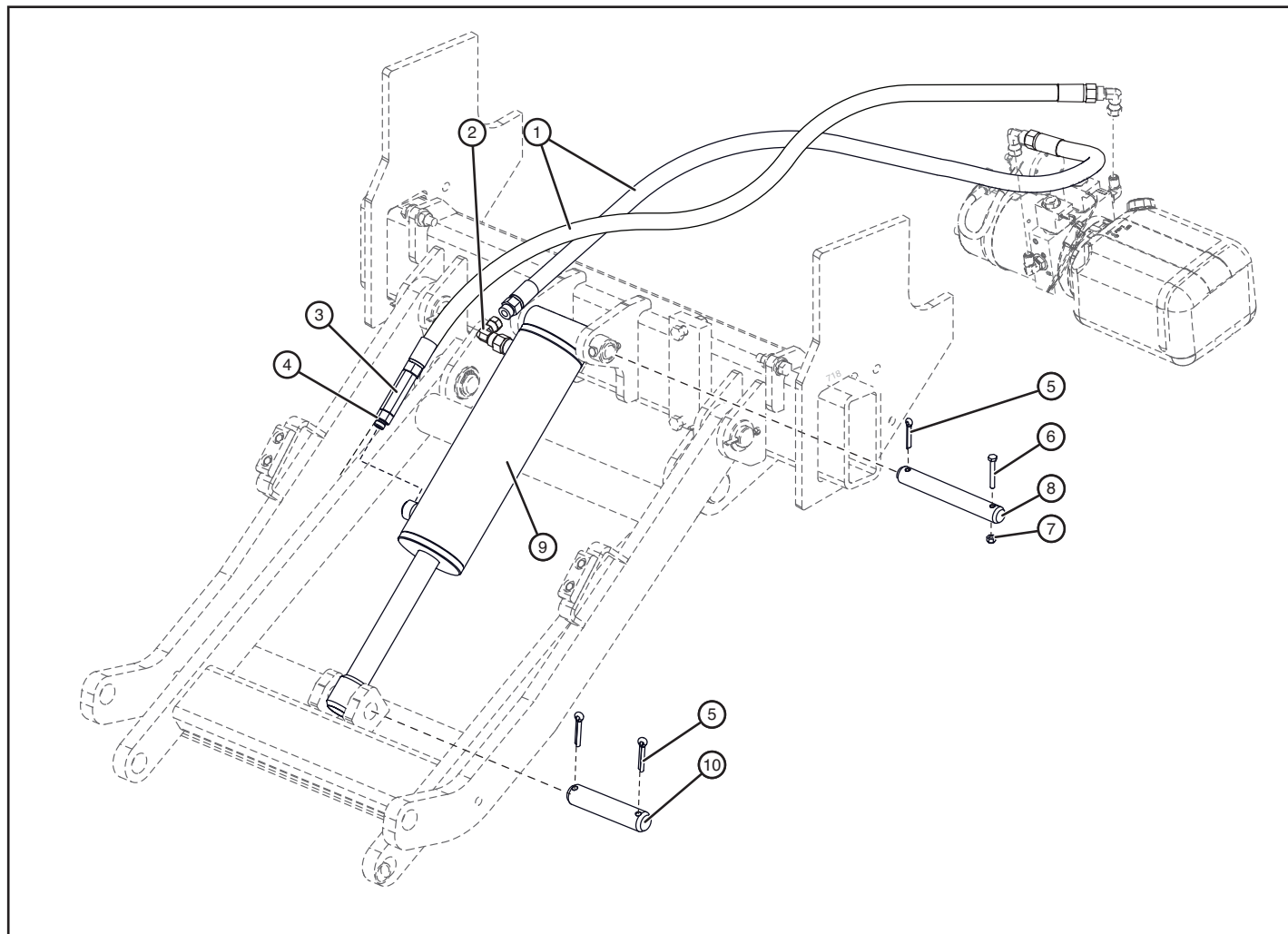
9. Step Kit



Item	Part Number	Description	Qty.
—	ATU-1710 ATU-1711, -G	30" AUX STEP KIT FOR 48" PLATFORM 45" AUX STEP KIT FOR 72" PLATFORM	—
1	ATU-1680 ATU-1494, -G	AUX STEP, 30" WIDE FOR 48" PLATFORM AUX STEP, 45" WIDE FOR 72" PLATFORM	1
2	ATU-1493	BRACE, AUX STEP	2
3	ATU-259	1/2-13 X 2" HEX BOLT GR8 ZP	3
4	1691	1/2" LOCKWASHER	6
5	A-150065	1/2" FLATWASHER 17/32" ID X 1-1/16" OD ZP	12
6	A-132024	1/2-13 LOCKNUT	2
7	A-132112	1/2-13 X 2.5" HEX BOLT	2
8	3139	1/2-13 HEX NUT GR8 ZP	4
9	A-132019	1/2-13 X 4" HEX BOLT GR8 YZ	2
—	ATU-1712	INSTALL INSTRUCTIONS FOR AUX STEP	—

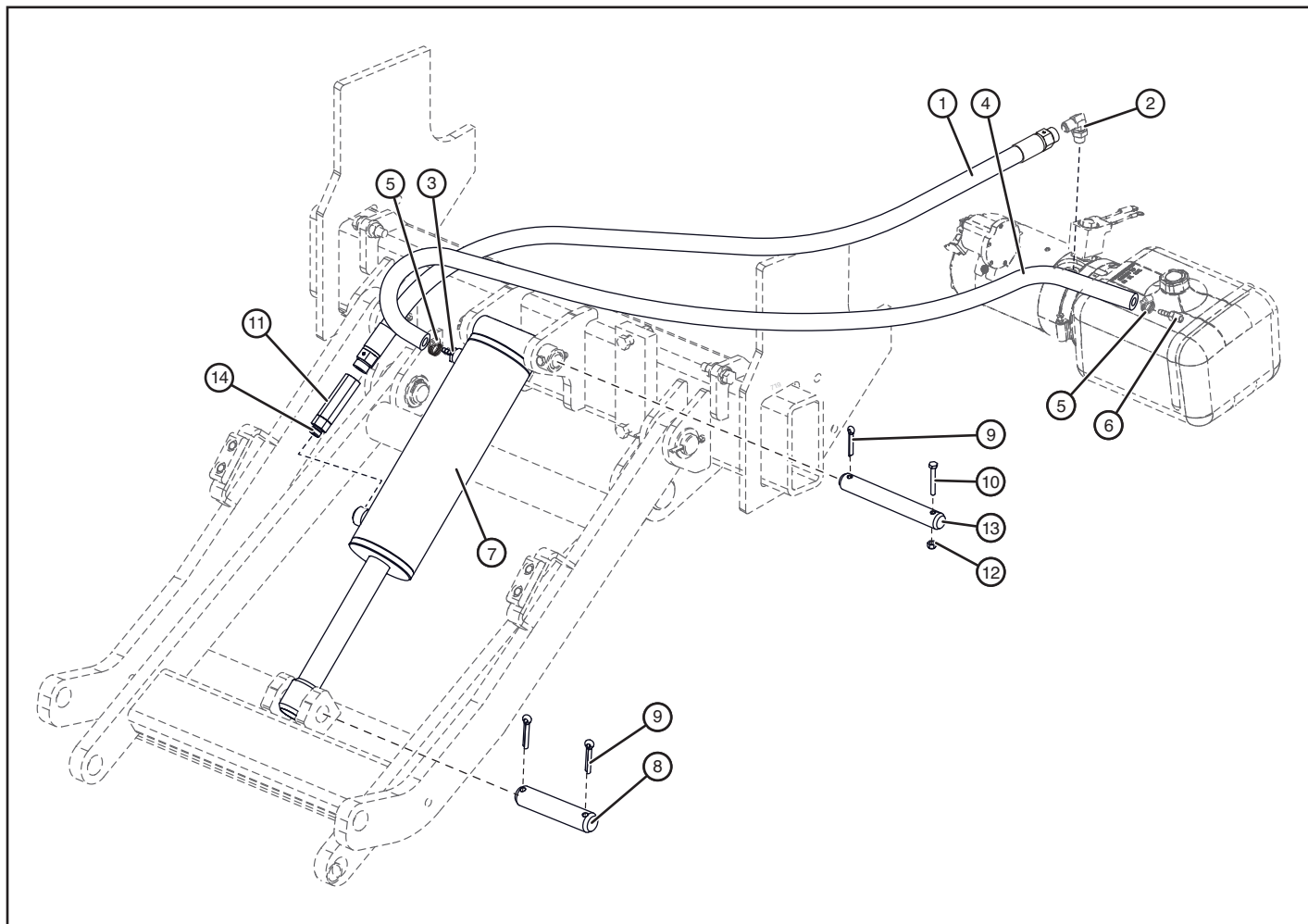
10. Hydraulic System

10.1 Power Down Assembly (SM-3000-SF only)



Item	Part Number	Description	Qty.
1	A-130222	HOSE, 3/8" X 120", 6FJX-6FJX	2
2	A-130140	FITTING, 06MJ-06MORB 90DEG	1
3	A-130102	RESTRICTOR VALVE, 3 GPM (3000)	1
4	A-130198	FITTING, STRAIGHT, 06MJ-06MORB	1
5	A-132026	COTTER PIN, 1/4" X 1-1/2" LG 18-8 SS	3
6	869	5/16-18 X 2" HEX BOLT GR8	1
7	862	5/16-18 CENTER LOCKNUT	1
8	A-140174	UPPER CYLINDER PIN	1
9	A-130114	CYLINDER, 4"	1
10	ATU-103	LOWER CYLINDER PIN, LIFTFRAME CYLINDER MOUNT	1

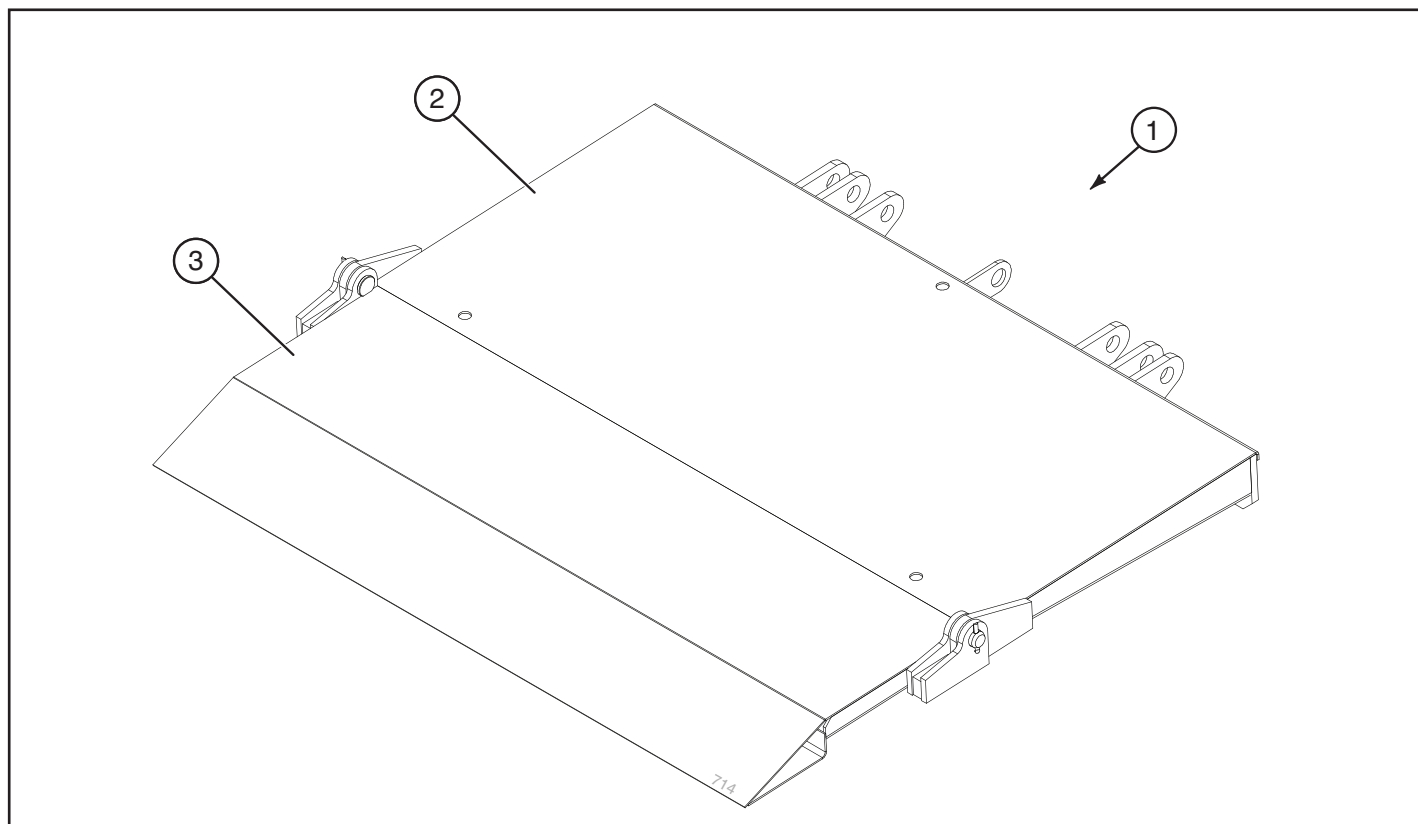
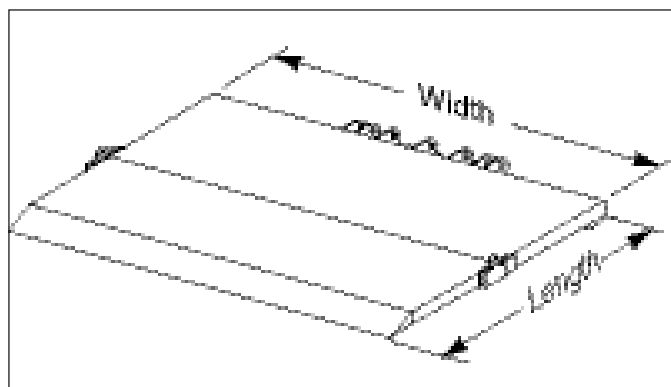
10.2 Gravity Down Assembly (1800, 2500, & 3000)



Item	Part Number	Description	Qty.
1	A-130150	HOSE, 3/8" X 90", 6FJX-6MB	1
2	A-130140	FITTING, 06MJ-06MORB 90DEG ELBOW	1
3	A-130143	FITTING, HOSE BARB (06MORB TO 3/16" BARB)	1
4	A-130282	CLEAR PLASTIC HOSE, 90"	1
5	A-130392	CLAMP, HYDRAULIC HOSE	2
6	AR-18-87 ATU-124	BRASS STREET ELBOW 1/8" NPT 90 DEG 3/16 BRASS HOSE BARB X 1/8 MALE NPT	1
7	A-130113 A-130114	CYLINDER - 3" (1800) CYLINDER - 4" (2500, 3000)	1
8	ATU-103	LOWER CYLINDER PIN, LIFTFRAME CYLINDER MOUNT	1
9	A-132026	COTTER PIN, 1/4" X 1-1/2" LG 18-8 SS	3
10	869	5/16-18 X 2" HEX BOLT GR8	1
11	A-130100 A-130101 A-130102	RESTRICTOR VALVE 1.5 GPM (1800) RESTRICTOR VALVE 2.25 GPM (2500) RESTRICTOR VALVE 3 GPM (3000)	1
12	862	5/16-18 CENTER LOCKNUT	1
13	A-140174	UPPER CYLINDER PIN	1
14	A-130198	FITTING, 6400-06MJ-06MORB STRAIGHT	1

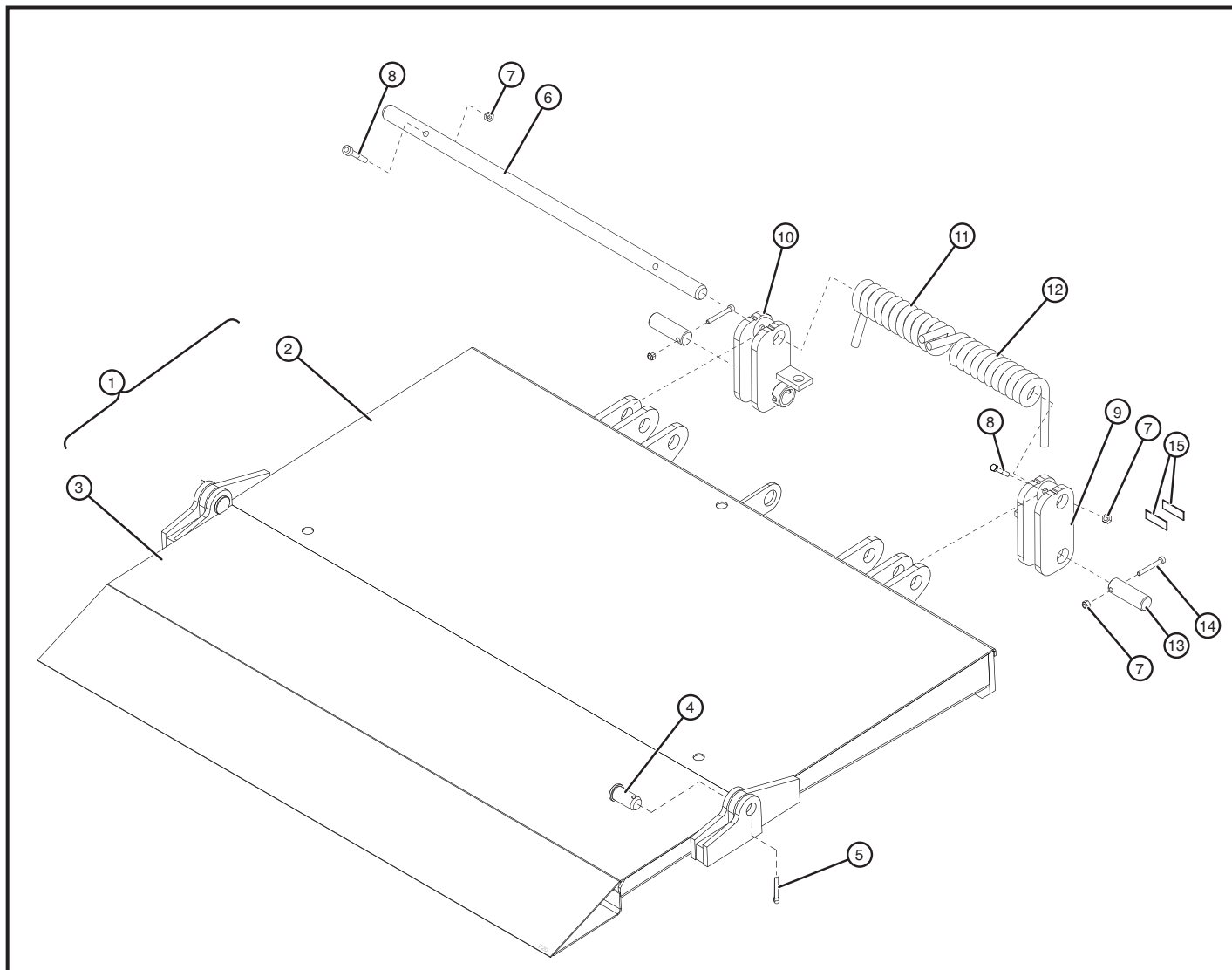
11. Platform Assemblies

Platform measurements are listed by width and then length (48" x 34") which represent the combined size of the liftgate platform (main platform plus flipover platform) and not the size of the individual parts. Whenever ordering replacement parts, compare the measurements of your liftgate with the measurements listed in the chart to determine the correct replacement part(s). If in doubt, contact the factory with model and serial number information to get the correct replacement part numbers.



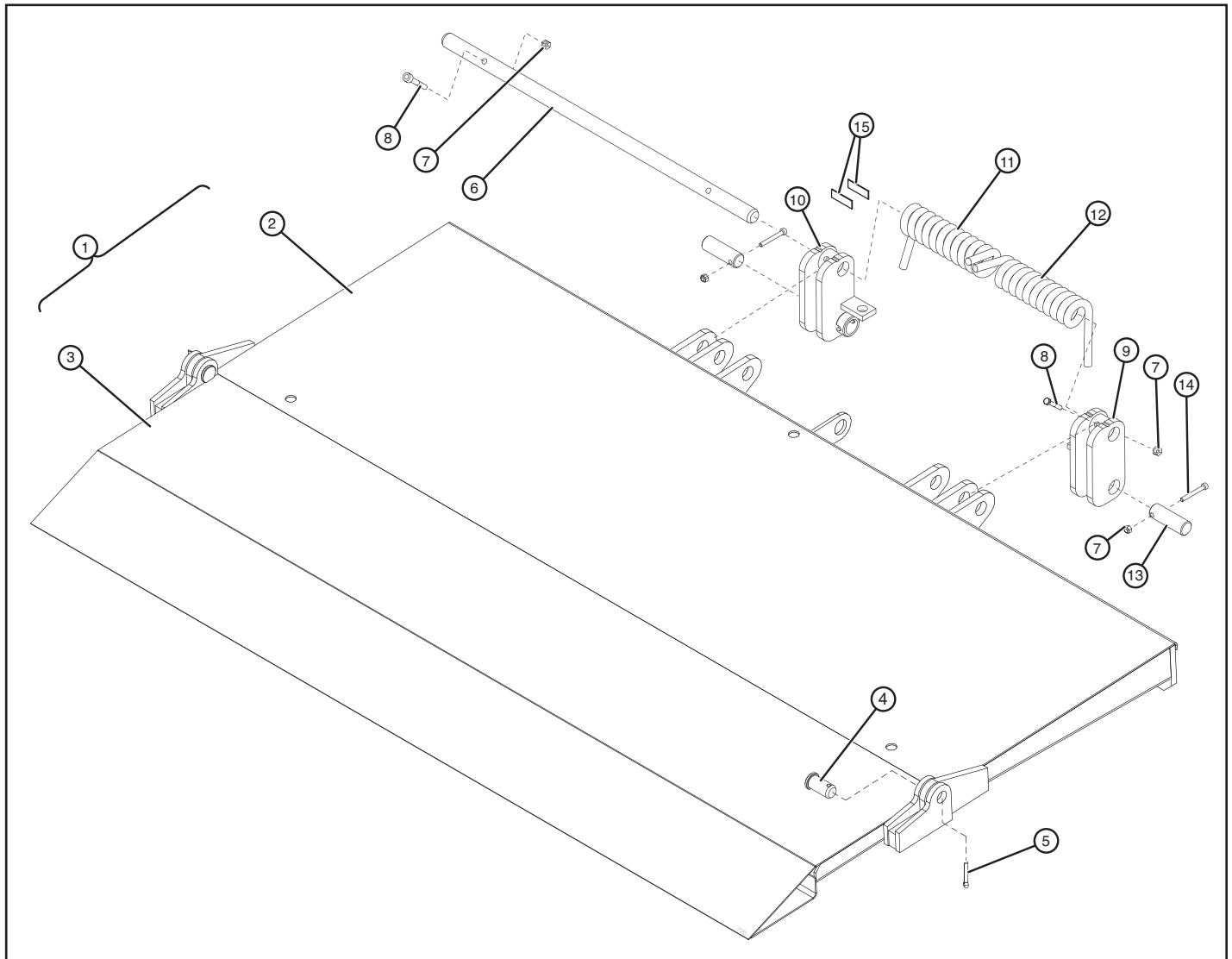
Item	Part Number	Description	Qty.
1	ATU-513	PLATFORM - 48 X 34+7 (1800, 3000)	1
2	ATU-1000	PLATFORM MAIN SECT	1
3	ATU-1009	PLATFORM FLIP SECTION	1
1	ATU-636	PLATFORM - 72 X 38+5 (2500 LEVEL RIDE)	1
2	ATU-256-35	PLATFORM MAIN SECT	1
3	ATU-576	PLATFORM FLIP SECTION	1

11.1 48 Inch Platform Assembly (1800, 2500, & 3000)



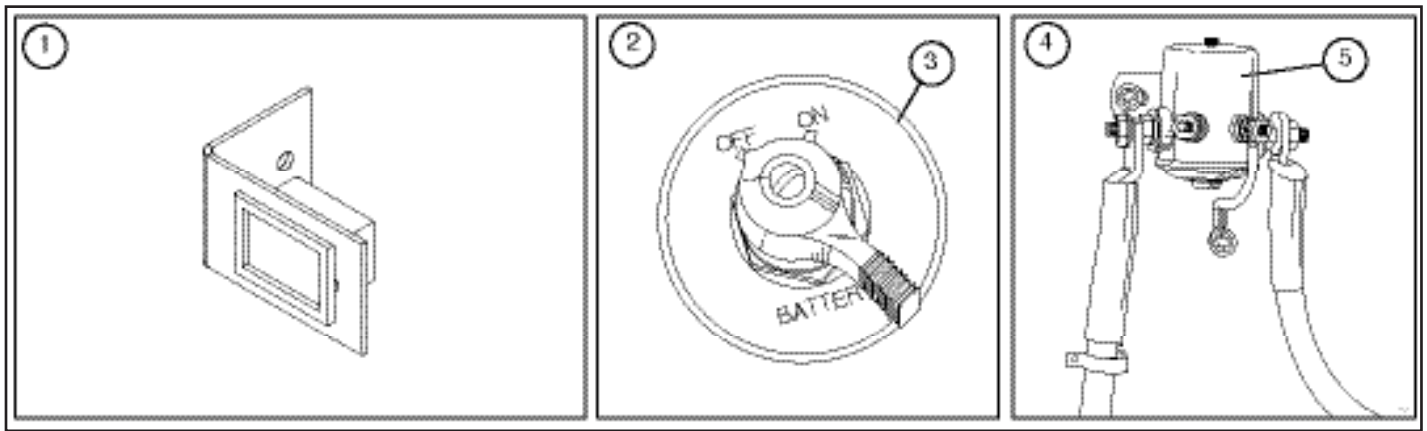
Item	Part Number	Description	Qty.
1	ATU-513	PLATFORM, 48 X 34+7 (1800, 3000)	1
2	ATU-1000	PLATFORM MAIN SECTION	1
3	ATU-1009	PLATFORM FLIP SECTION	1
4	ATU-647	PIN, FLIP TO MAIN PLATFORM	2
5	A-132026	COTTER PIN, 1/4" DIA X 1.5" LONG, STAINLESS STEEL	2
6	ATU-104	PIN, PLATFORM AND CAMS	1
7	862	5/16-18 LOCKNUT	4
8	869	5/16-18 X 2" HEX BOLT	2
9	ATU-107-R	CAM ASSY, CURBSIDE	1
10	ATU-107-L	CAM ASSY, STREETSIDE	1
11	ATU-100-L	PLATFORM SPRING, STREETSIDE	1
12	ATU-518-R	PLATFORM SPRING, CURBSIDE	1
13	ATU-1485	CAM PLATE PIN	2
14	A-132148	5/16-18 X 2" SOCKET CAP SCREW GR8	2
15	ATU-071	SHIM, 14 GA	—

11.2 72 Inch Platform Assembly (2500 Level Ride)



Item	Part Number	Description	Qty.
1	ATU-636	PLATFORM, 72 X 38+5 (2500 LEVEL RIDE)	1
2	ATU-256-35	PLATFORM MAIN SECTION	1
3	ATU-576	PLATFORM FLIP SECTION	1
4	ATU-647	PIN, FLIP TO MAIN PLATFORM	2
5	A-132026	COTTER PIN, 1/4" DIA X 1.5" LONG, STAINLESS STEEL	2
6	ATU-104	PIN, PLATFORM AND CAMS	1
7	862	5/16-18 LOCKNUT	4
8	869	5/16-18 X 2" HEX BOLT	2
9	ATU-376	CAM PLATE ASSY, "LEVEL RIDE", CURBSIDE	1
10	ATU-377	CAM PLATE ASSY, "LEVEL RIDE", STREETSIDE	1
11	ATU-100-L	PLATFORM SPRING, STREETSIDE	1
12	ATU-518-R	PLATFORM SPRING, CURBSIDE	1
13	ATU-1485	CAM PLATE PIN	2
14	A-132148	5/16-18 X 2" SOCKET CAP SCREW GR8	2
15	ATU-071	SHIM, 14 GA	—


12. Miscellaneous Accessories



Item	Part Number	Description	Qty.
1	A-133354	CYCLE COUNTER KIT	1
2	A-133038	CUT-OFF SWITCH KIT - MANUALLY OPERATED	1
3	A-150031	SWITCH, CUT-OFF - MANUALLY OPERATED	1
4	A-133036	CUT-OFF SOLENOID KIT	1
5	A-150263	CUT-OFF SOLENOID	1

13. Safety and Instructional Decals

13.1 General Information

SAFETY INSTRUCTIONS  To prevent personal injury from not being aware of safety recommendations, make sure appropriate decals are attached to any liftgate replacement part that contained that decal initially.

To ensure the greatest level of safety, all decals must be attached to specified replacement parts and must be legible at all times. Remember, it is the users' or maintenance personnel's responsibility to make sure these decals are attached to the replacement parts.

13.2 Decal Part Numbers

Item	Part Number	Description	Qty.
—	ATU-717	DECAL/INSTALL KIT SM1800	—
—	ATU-718	DECAL/INSTALL KIT SM2500	—
—	ATU-787	DECAL/INSTALL KIT SM3000	—
1	A-131115	WARNING, PERSONAL INJURY	1
2	ATU-423	OPERATING INSTRUCTIONS	1
3	A-150238	NOTICE, PROTECTED WITH ELECTRICAL OVERLOAD CIRCUIT BREAKER	1
4	ATU-141	AFTER USING LIFTGATE	1
5	ATU-175 ATU-174 ATU-147	1800 LB. MAXIMUM CAPACITY 2500 LB. MAXIMUM CAPACITY 3000 LB. MAXIMUM CAPACITY	1
6	A-131034	ANTHONY LABEL	1
7	ATU-143	SECURE LATCH WHILE IN TRANSIT	1
8	A-131017	NOTE, DISENGAGE LATCH	1
9	A-150601	MADE IN THE USA	1
10	ATU-146	STAND CLEAR	1
11	A-131028	WELD WARNING	1
12	A-131133	HYDRAULIC FLUID	1
13	A-131001	10 AMP FUSE CHANGING PROCEDURE (attached to control wiring in pump box)	1
14	A-131125	WARNING, GALVANIZED FUMES HAZARD	1

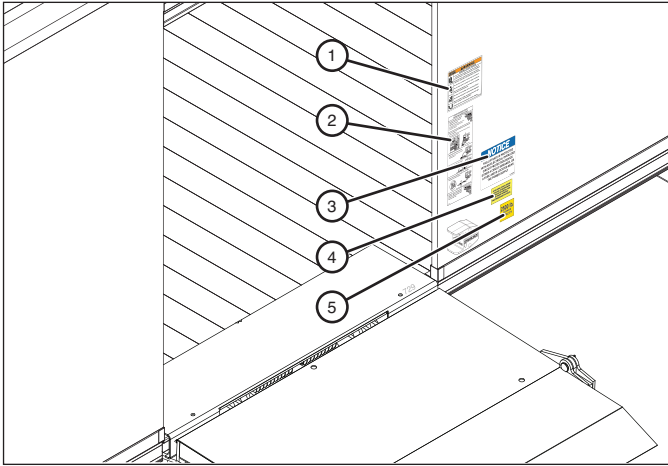
13.3 Decal Placement

SAFETY INSTRUCTIONS

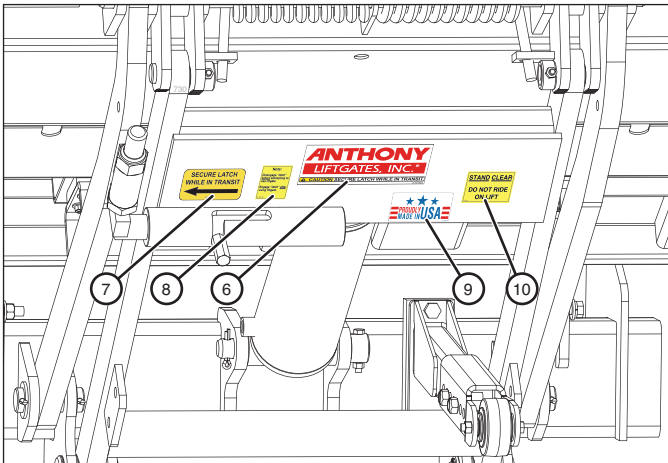


To prevent possible injuries due to improper operation, make sure all decals are attached to the liftgate and truck and are legible.

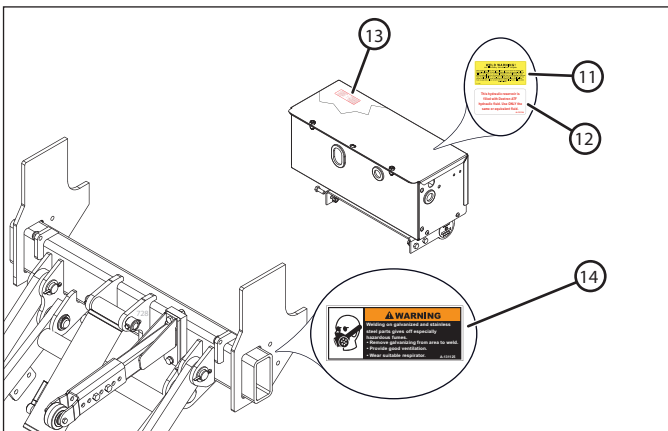
1. Attach decals 1 through 5 to the truck body, as shown.



2. Make sure factory-installed decals 6 through 10 are attached to the lift arms and platform.

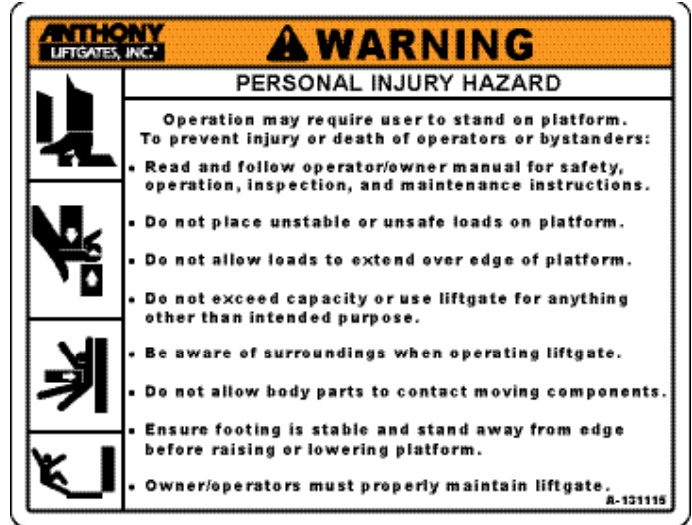


3. Make sure factory-installed decals 11 through 13 are installed on the power unit. Decal 14 is only attached to galvanized liftgates on the adapter frame tube.

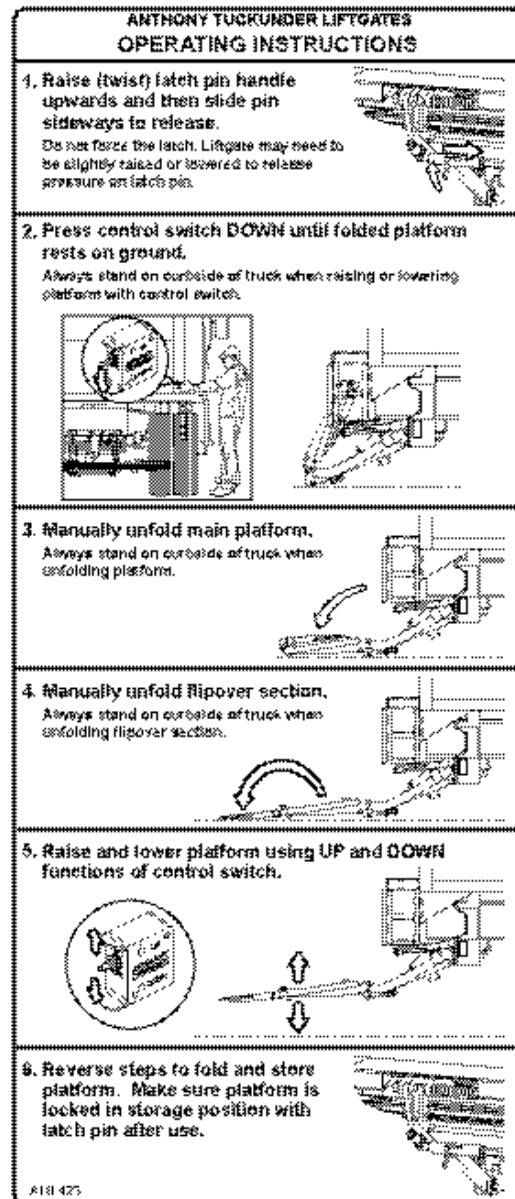


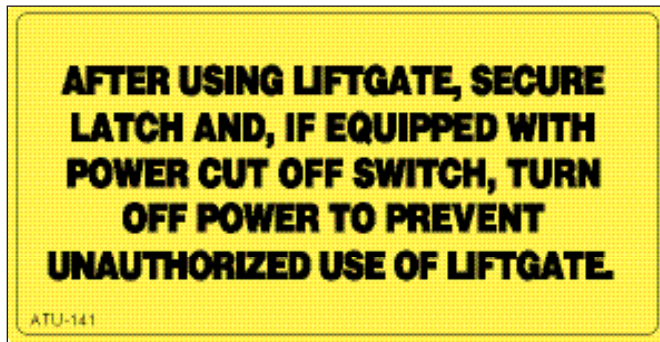
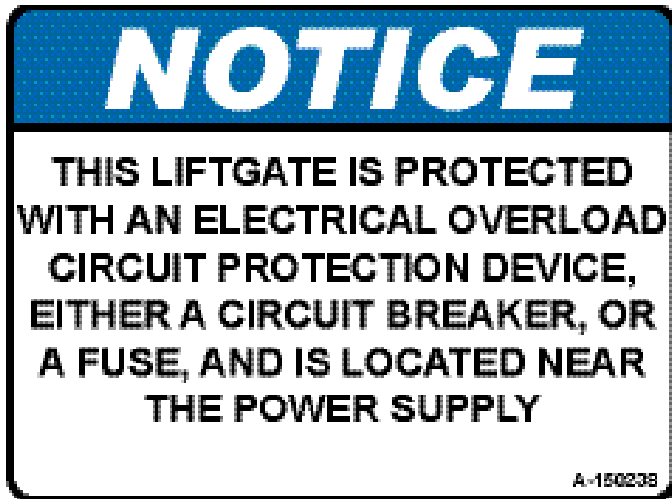
13.4 Decals

1 — A-131115



2 — ATU-423





Make sure the proper "MAXIMUM CAPACITY" decal is placed on the truck for the appropriate lifting capacity of the liftgate being installed. Do not put a higher rated decal on a liftgate with a lower capacity; this could result in liftgate damage or possibly personal injury.



STAND CLEAR

**DO NOT RIDE
ON LIFT**

ATU-146



⚠ WARNING

Welding on galvanized and stainless steel parts gives off especially hazardous fumes.

- Remove galvanizing from area to weld.
- Provide good ventilation.
- Wear suitable respirator.

A-131125

WELD WARNING!
For all Anthony "Service-Free" Liftgates

When performing welding during installation, service, or repair on Anthony "SF" Service-Free liftgates, the actual part being welded must be grounded. Failure to follow this instruction can cause the welding ground to travel through the high pressure hydraulic hose as the source of ground, thus causing damage to the hose from the powerful electric current. The resulting damage to the hose may or may not be visible and can cause unexpected catastrophic failure of the lift. If you have any questions, please contact Anthony Liftgates, Inc., Pontiac, Illinois, USA (800-482-0003).

A-131028

**This hydraulic reservoir is
filled with Kendall Glacial Blu
hydraulic fluid. Use ONLY the
same or equivalent fluid.**

A-131133

10 AMP FUSE & HOLDER
Protects against dead shorts
in this "control circuit".
If blown, pull "fuse holder
cap", replace fuse, replace
"cap". If fuse continues to
blow, contact a qualified
mechanic. "control circuit"
may be damaged.

A-131001

10 AMP FUSE & HOLDER
Protects against dead shorts
in this "control circuit".
If blown, pull "fuse holder
cap", replace fuse, replace
"cap". If fuse continues to
blow, contact a qualified
mechanic. "control circuit"
may be damaged.

ANTHONY
LIFTGATES, INC.®

500 lb.
MAXIMUM
CAPACITY



THE ORIGINAL NAME IN LIFTGATES - SINCE 1941

ANTHONY
LIFTGATES, INC.®

SM

1037 WEST HOWARD ST.
P.O. BOX 615
PONTIAC, IL 61764-0615
PH: 815-842-3383
FAX: 815-844-3612
TOLL FREE: 800-482-0003
WWW.ANTHONYLIFTGATES.COM