

ANTHONYLIFTGATES, INC.

KEEP IN VEHICLE WITH LIFTGATE

PARTS MANUAL

For Magnum Tuckunder™ Hydraulic Liftgates®

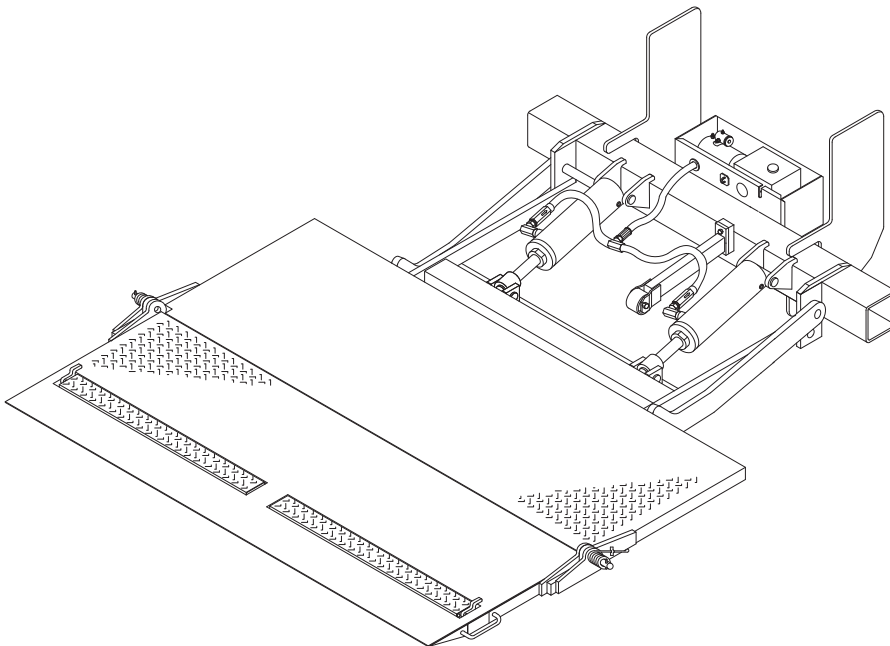
MODELS

MTU-GLR-3

MTU-GLR-4

MTU-3000-SF

MTU-4000-SF



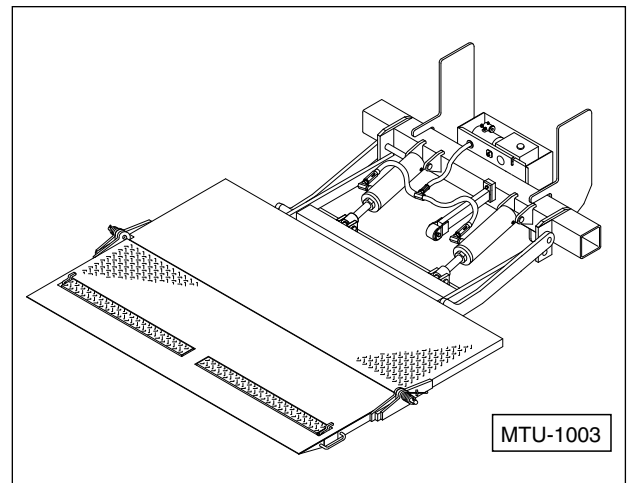
ANTHONY
LIFTGATES, INC.®

Anthony Liftgates, Inc.
1037 W. Howard Street • P.O. Box 615 • Pontiac, IL 61764-0615
Ph: 815.842.3383 • Fax: 815.844.3612 • Toll Free: 800.482.0003
www.anthonyliftgates.com

Introduction	3
Safety	4
Safety Is Your Responsibility	4
General Information	4
Ordering Parts	4
Contact Information	4
Nomenclature	5
Platform Nomenclature	5
Power Unit Nomenclature	5
Decals	6
Floor Extension Assembly	8
Pump Box	10
Frame Mounting Assembly	12
Rocker Assembly	14
Hydraulic Cylinders	16
Lift Frame	18
Main Platform	20
Flip-Over Platform	22
Hydraulic Power Pack Unit (“M” Type 1) ..	24
Hydraulic Power Pack Unit (“M” Type 2) ..	26
Hydraulic Power Pack Unit (“O.S.” Type) ..	28
Fuse Assembly	30
Control Switch Assembly, Raise/Lower ..	32
Complete Parts List	34

Congratulations on selecting an Anthony liftgate. Anthony liftgates are among the finest liftgates available on the market today, and to ensure your liftgate will perform to your expectations, we have provided the following manuals, designed to provide you with the necessary instructions and safety precautions to install and operate these models of Anthony Liftgates:

1. Installation, Operation, Troubleshooting, and Maintenance Manual for MTU and MTU-GLR Model Magnum Tuckunder Liftgates.
2. Parts Manual for MTU and MTU-GLR Model Magnum Tuckunder Liftgates.



This Parts Manual contains part numbers for past and present Anthony liftgates. The parts illustrated in the parts drawings are representative of typical parts used in the actual Magnum Tuckunder liftgate and may not look exactly like the part(s) on your liftgate. Part numbers and drawings are subject to change without notice. At the bottom of each page is the Anthony Liftgates Inc. Product Support phone number.

All Anthony Magnum Tuckunder model liftgates are factory assembled, tested, and energized to assure the highest quality performance standards. Our liftgates ship completely assembled on skids for fast, clean, and easy installation.

Safety Is Your Responsibility

DANGER



To avoid personal injury or death, carefully read and understand all instructions pertaining to the Anthony Liftgates product. Do not attempt to install, operate, or maintain our product without fully understanding all our instructions and safety precautions. Do not operate or work on a truck or liftgate unless you have read and understand all of the instructions and warnings in the MTU-GLR Installation, Operation, and Maintenance manual. If any doubt or question arises about the correct or safe method of performing anything found in this or other manuals from Anthony Liftgates, contact your Anthony Liftgates dealer or call the Inside Sales and Service representatives at our main headquarters (815-842-3383). Proper care is your responsibility.

Anthony Liftgates cannot anticipate every possible circumstance that might involve a potential hazard. The warnings in this manual and on the product itself are, therefore, not all inclusive. If tools, procedures, work methods, or operating techniques that are not specifically mentioned by Anthony Liftgates are used, you must satisfy yourself that it is safe for you and for others.

Make sure the product or truck the liftgate is mounted onto will not be damaged or made unsafe by any operation, lubrication, maintenance, or repair procedures that you choose.

DO NOT proceed if any doubt arises about the correct or safe method of performing anything found in this or other Anthony Liftgates manuals. Seek out expert assistance from a qualified person before continuing.

DANGER



Most accidents involving the operation, maintenance, or repair of products made by Anthony Liftgates occur because the owner/operator failed to observe basic safety rules or operating instructions. An accident can often be avoided by being alert and recognizing potentially hazardous situations. Any individuals operating, maintaining, or repairing products manufactured by Anthony Liftgates should have the necessary training, skills, and tools required to perform the functions properly and safely. The safety information in this manual serves as a basic guide in an attempt to prevent injury or death.

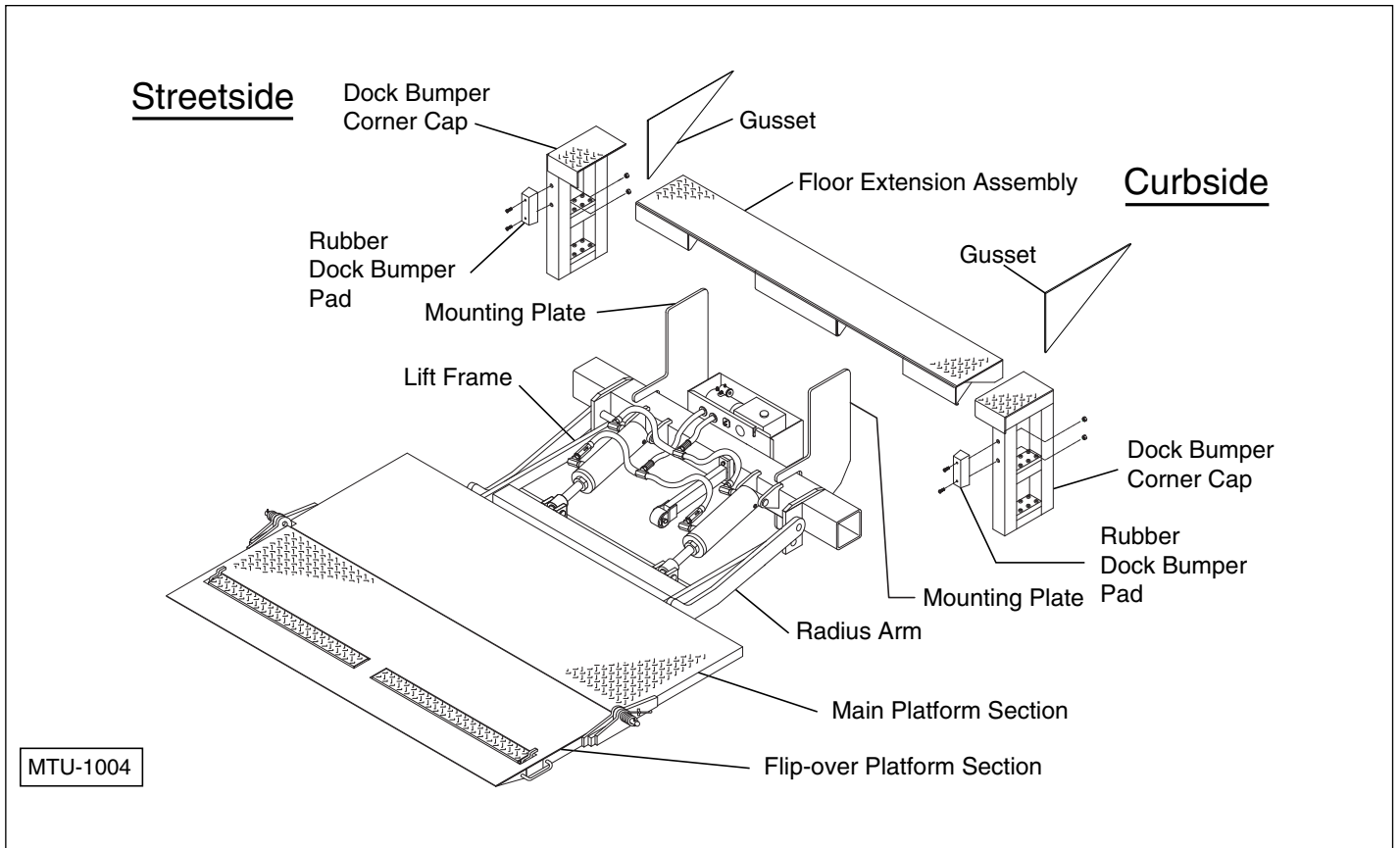
Ordering Parts

We manufacture a quality liftgate that requires very little maintenance or repair. However, should a part break or become damaged, our knowledgeable staff can make sure you receive the part(s) to put your liftgate back into operation.

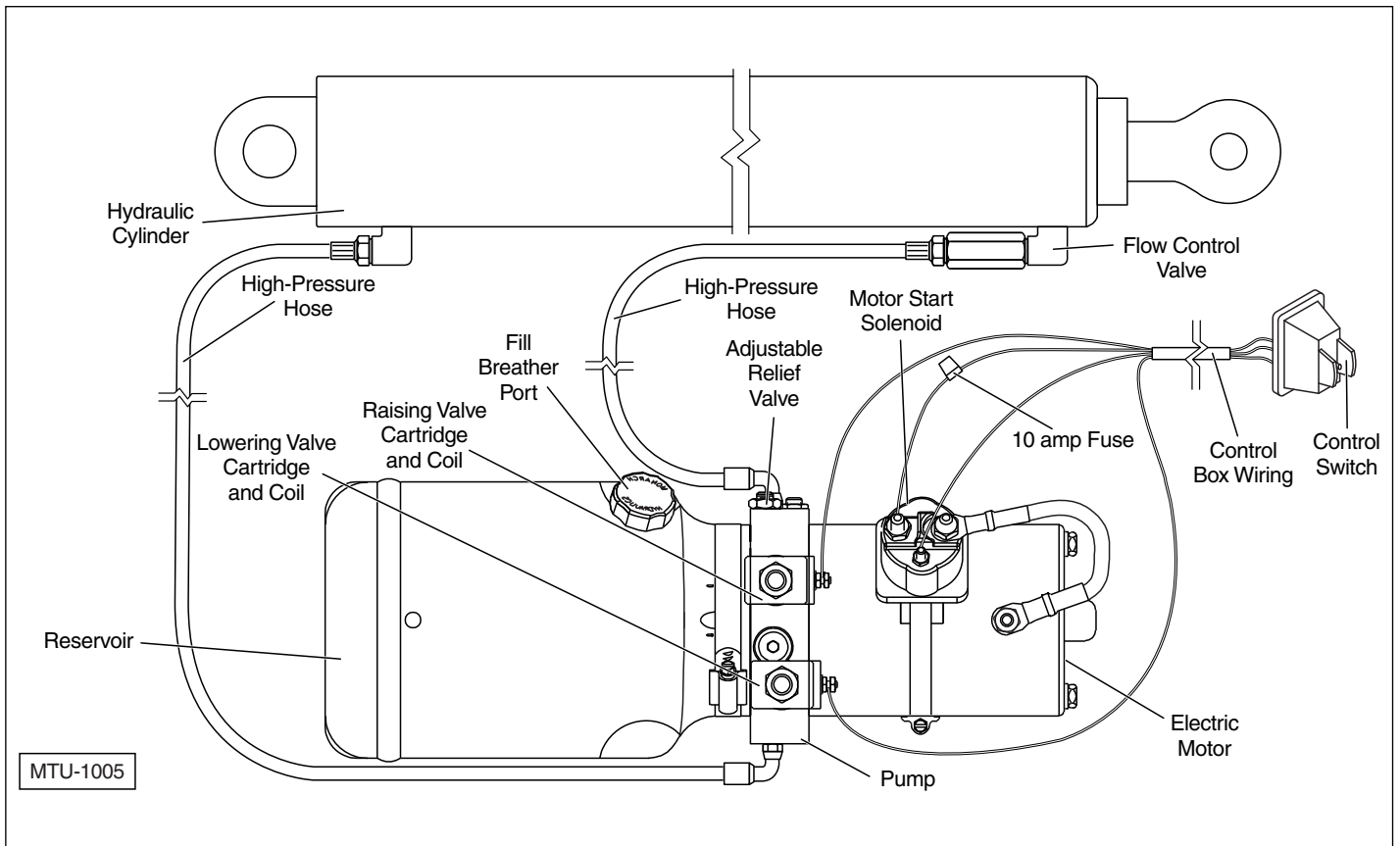
Contact Information

For replacement decals, questions, or to order parts, contact:

Anthony Liftgates, Inc.
1037 West Howard Street
Pontiac, Illinois 61764
(815) 842-3383
www.anthonyliftgates.com



Platform nomenclature.



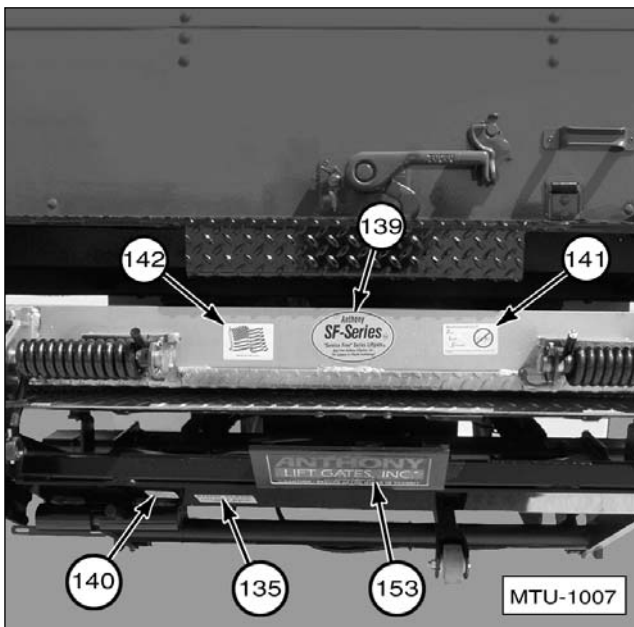
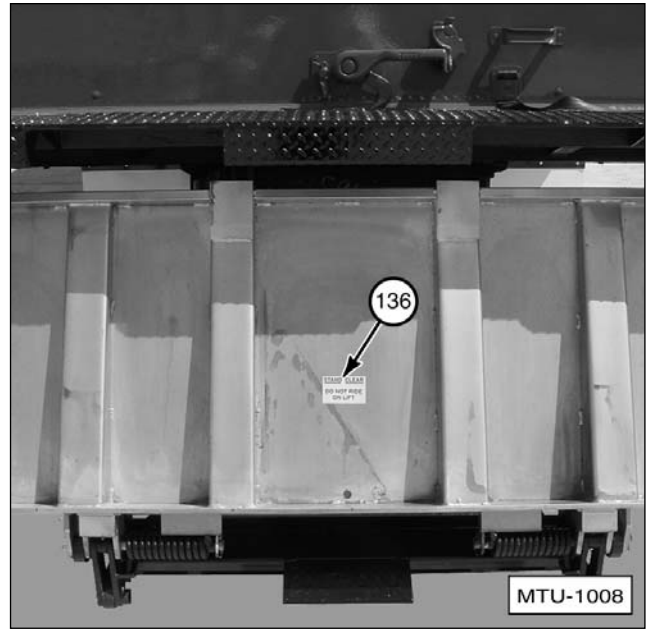
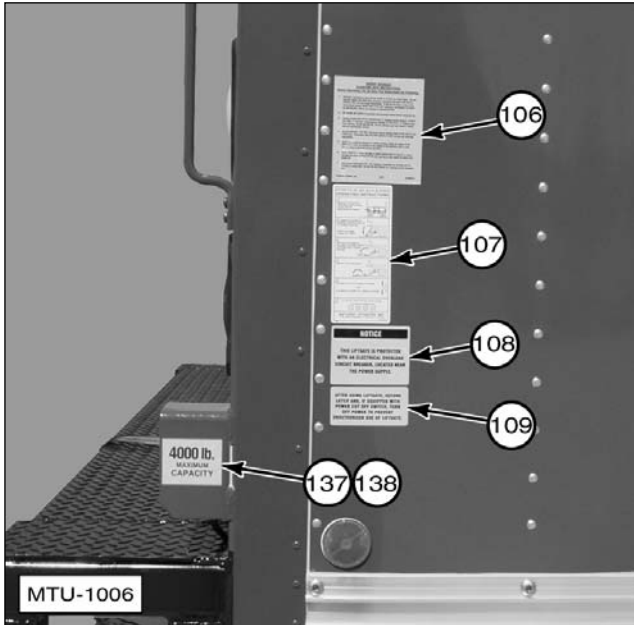
Power unit nomenclature.

Decals

⚠ DANGER

Make sure all decals are attached to the lift-gate and/or truck and are legible at all times.

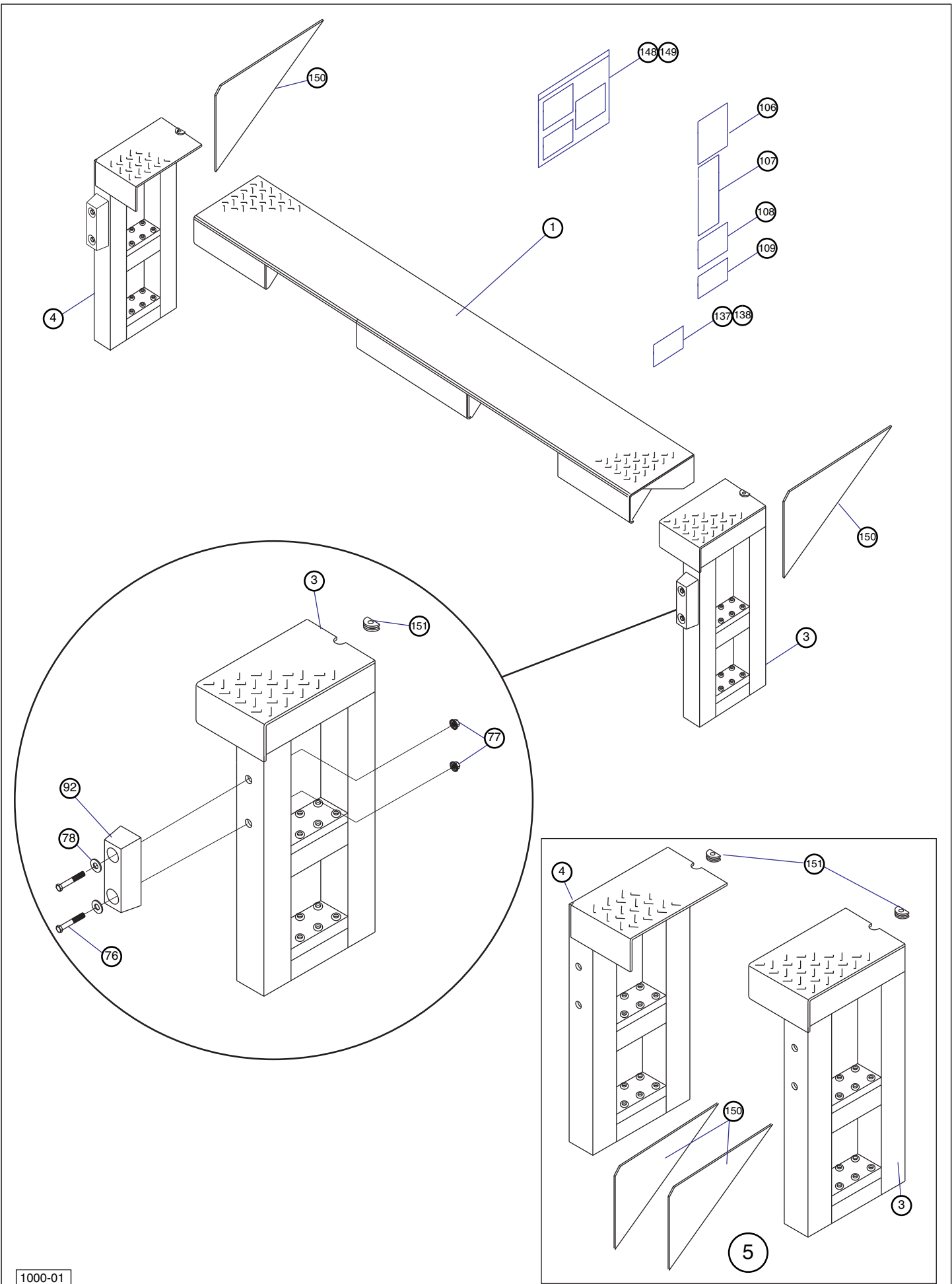
Safety decals provide a vital role in helping to reduce injuries or possibly even death. To ensure the greatest level of safety, all decals must be in place and legible at all times. Remember, it is the users responsibility to maintain these decals.



Item	Part No.	Description	Qty	Remarks
106	Q-003013	Urgent Warning - Elevating Gate Instructions...	1	On side of truck body.
107	ATU-423	Operating Instructions	1	On side of truck body.
108	A-150238	Decal, Sticker -- "NOTICE"... (electrical overload breaker)	1	On side of truck body.
109	ATU-141	After Using Liftgate, Secure Latch...	1	On side of truck body.
134 ¹	ATU-424	Decal, Sticker -- "WARNING"... (reset circuit breaker)	1	
135	ATU-143	Secure Latch While in Transit	1	Place by latch assembly.
136	ATU-146	Stand Clear -Do Not Ride on Lift	2	On bottom of main platform and on bottom of flip-over section.
137	ATU-147	3000 LB. Maximum Capacity	1	On side of truck body on 3000 Models only.
138	A-171433	4000 LB. Maximum Capacity	1	On side of truck body on 4000 Models only.
139	A-131003	SF Series	1	Inside edge of platform.
140	A-131017	Note: Disengage "latch"...	1	On bottom of main platform.
141	A-131026	Zero Leak Concept	1	Inside edge of platform.
142	A-150601	Flag — Made in the USA	1	Inside edge of platform.
143 ¹	A-131001	Decal, Wire Tag -- "10 AMP FUSE & HOLDER	1	Inside pump box.
148 ¹	A-140120	Decal Kit, 3000 LB. Maximum Capacity includes decals 106 thru 109, 134 thru 136, and 137, 139, 140, 141	1	Optional decal kit.
149 ¹	A-140121	Decal Kit, 4000 LB. Maximum Capacity includes decals 106 thru 109, 134 thru 136, and 138, 139, 140, 141	1	Optional decal kit.
154	A-131034	Anthony Hydraulic Liftgate Label	1	On back of liftgate.
¹ Not Shown				

Floor Extension Assembly

Item	Part No. MTU	Part No. MTU-GLR	Description	Quantity
1	A-140028	A-140028	Floor Extension, Weldment – 96” Wide	Specify one
	A-140056	A-140056	Floor Extension, Weldment – 102” Wide	
3	A-140062	A-140062	Dock Bumper Weldment, <i>Curbside</i>	1
4	A-140064	A-140064	Dock Bumper Weldment, <i>Streetside</i>	1
5	A-140112	A-140112	Dock Bumper Weldment – (includes items 3, 4, 150, & 151)	
76	2149	2149	Bolt, 3/8–16, X 2 ½” Long	4
77	A-132038	A-132038	Nut, Flanged, 3/8–16, Whiz-Lock™	4
78	2058	2058	Flat Washer, 3/8”	4
92	ATU-126	ATU-126	Dock Bumper Pad (rubber/steel)	2
106	Q-003013	Q-003013	Decal, Sticker -- “URGENT WARNING”... (elevating gate)	1
107	ATU-423	ATU-423	Decal, Sticker -- “OPERATING INSTRUCTIONS”...	1
108	A-150238	A-150238	Decal, Sticker -- “NOTICE”... (electrical overload breaker)	1
109	ATU-141	ATU-141	Decal, Sticker -- “AFTER USING LIFTGATE”... Secure	1
137	ATU-147	ATU-147	Decal, Sticker -- “3000 LB. MAXIMUM CAPACITY”	1
138	A-171433	A-171433	Decal, Sticker -- “4000 LB. MAXIMUM CAPACITY”	1
148	A-140120	A-140120	Decal Kit, 3000 LB. Maximum Capacity - includes Decals, Item Nos. 106 thru 109, 134 thru 136, and 137, 139, 140, and 141	1
149	A-140121	A-140121	Decal Kit, 4000 LB. Maximum Capacity - includes Decals, Item Nos. 106 thru 109, 134 thru 136, and 138, 139, 140, and 141	1
150	ATU-200	ATU-200	Gusset - For Dock Bumper/Steps	2
151	A-140116	A-140116	Grommet, Rubber – For Control Switch Cord on Dock Bumpers	2



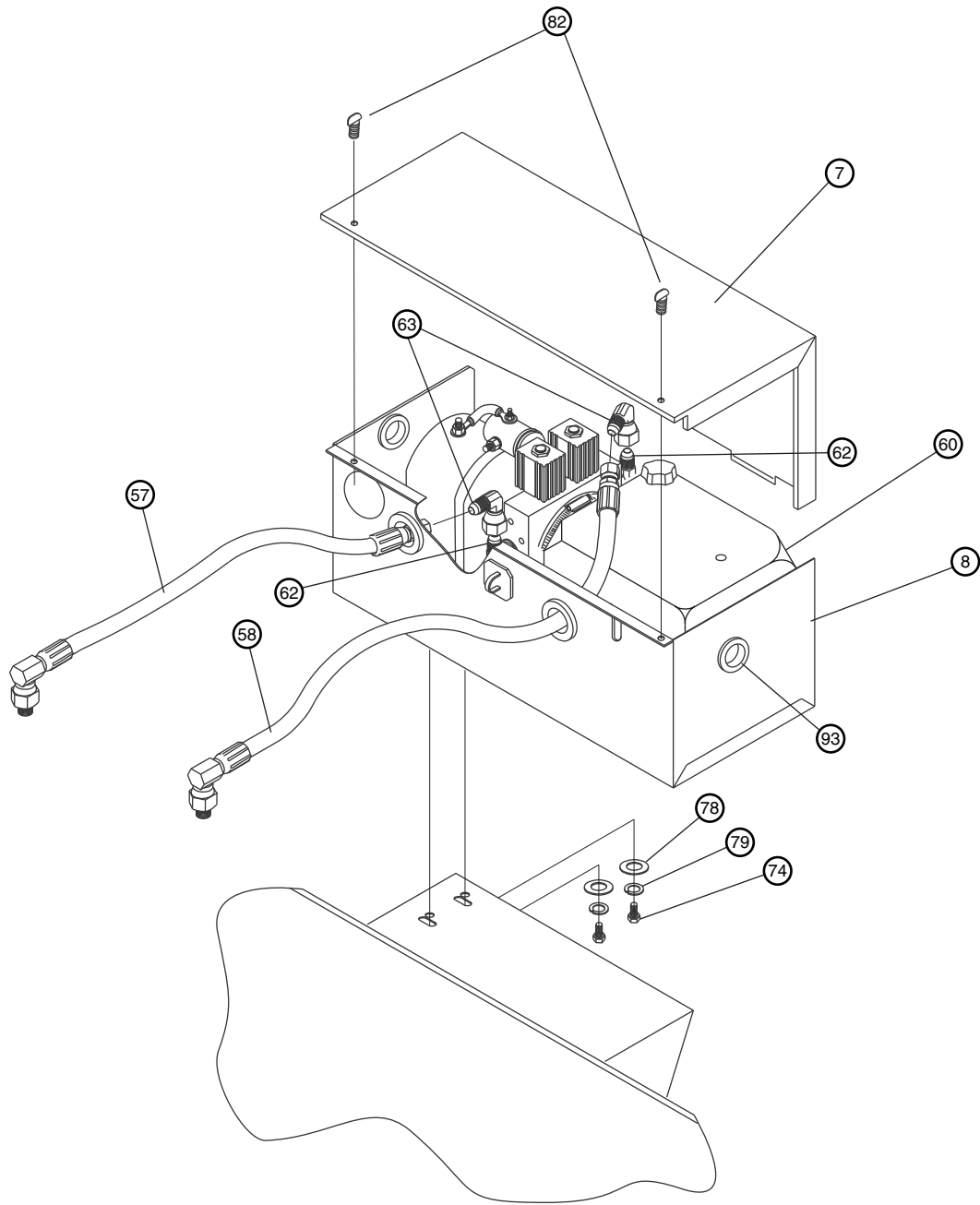
1000-01

Pump Box

<i>Item</i>	<i>Part No. MTU</i>	<i>Part No. MTU-GLR</i>	<i>Description</i>	<i>Quantity</i>
7	ATU-533	ATU-533	Pump Box Cover	1
8	ATU-531	ATU-531	Pump Box Enclosure	1
57	A-130212	A-130212	Hydraulic Hose Assembly (T-Block to Power Pack Unit, 'DOWN')	1
58	A-130213	A-130213	Hydraulic Hose Assembly (T-Block to Power Pack Unit, 'UP')	1
62	A-130062	A-130062	Fitting, 90-Degree Adapter (male SAE #6 – male JIC #6)	2
63	A-130142	A-130142	Fitting, 90-Degree Elbow, (male SAE #6 – female JIC #6)	2
60	A-130166	A-130166	MTU Power Pack Unit , 3000 LB Capacity	1
	A-130214	A-130214	MTU Power Pack Unit , 4000 LB Capacity	
74	ATU-247	ATU-247	Capscrew, 3/8–16, X 1 ¼” Long	2
78	2058	2058	Flat Washer, 3/8”	2
79	2054	2054	Lockwasher, 3/8”	2
82	A-132029	A-132029	Thumbscrew, 5/16–18, Plated	2
93	ATU-137	ATU-137	Grommet (rubber)	4

Note: See pages 24, 26, & 28 for drawings and part numbers for the pump.

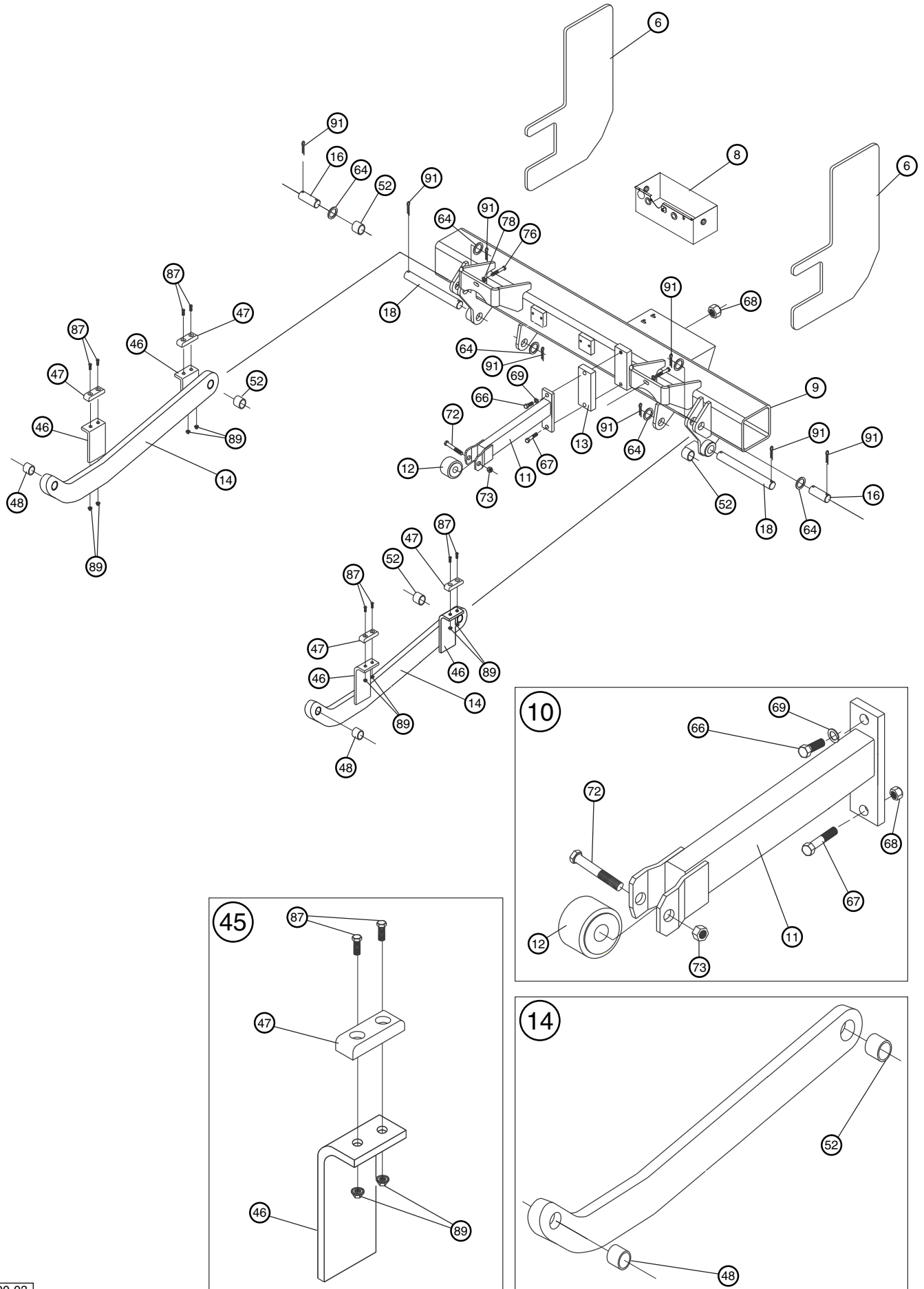
Pump Box



Frame Mounting Assembly

<i>Item</i>	<i>Part No. MTU</i>	<i>Part No. MTU-GLR</i>	<i>Description</i>	<i>Quantity</i>
6	A-140022	A-140022	Mounting Plate	2
8	ATU-531	ATU-531	Pump Box Enclosure	1
9	A-140011	A-140150	Adapter Frame Weldment - *Note: includes item 8	1
10	A-140125	A-140125	Wheel Arm Assembly (includes items 11, 12, 66, 67, 68, 69, 72, 73)	1
11	ATU-340	ATU-340	Wheel Arm – Weldment	1
12	ATU-123	ATU-123	Wheel – Includes Spacers and Washers	1
13	A-140096	A-140096	Spacer Block	1
14	ATU-192	ATU-192	Radius Arm Assembly – Includes Bushings (48 & 52)	2
16	A-140177	A-140177	Link Pin (1 ¼” Dia.)	2
18	(not used)	A-140175	Rocker Pin (1 ¼” Dia.)	2
45	A-140089	A-140089	Platform Support Bracket Assembly (includes items 47, 87, & 89)	4
46	A-140086	A-140086	Platform Support Plate (bracket)	4
47	A-140090	A-140090	Bumper Pad – Platform Support Plate (plastic, replaces prior A-155037, Rubber Bumper Pad)	4
48	ATU-426	ATU-426	Bushing, 1” ID x 1 ¼” OD x 1” Long (plastic)	2
52	ATU-428	ATU-428	Bushing, 1 ¼” ID x 1 ½” OD x 1” Long (plastic)	2
64	ATU-134	ATU-134	Ring Washer, 1 ¼” I.D., 1 7/8” O.D. X 1/8” thick	4
66	ATU-259	ATU-259	Bolt, ½–13 NC, X 2” Long, Grade 8	1
67	A-176546	A-176546	Bolt, ½–13 NC, X 3 ½” Long, Grade 8	1
68	A-132024	A-132024	Nut, Locking ½–13 NC – Wheel Arm, Top	1
69	1691	1691	Lockwasher, ½”, Wheel Arm, Top	1
72	A-132039	A-132039	Pin Bolt, 3/8–24, X 3” Long, Grade 8	1
73	2184	2184	Nut, Center Locking, 3/8–24	1
76	2149	2149	Bolt, 3/8–16, X 2 ½” Long	2
78	2058	2058	Flat Washer, 3/8”	2
87	S-047004	S-047004	Screw, ¼–20 x 1” Long	8
89	ATU-359	ATU-359	Nut, Top Locking, ¼–20	8
91	A-132027	A-132027	Cotter Pin, ¼” Dia. X 2” Long (stainless steel)	8

Frame Mounting Assembly

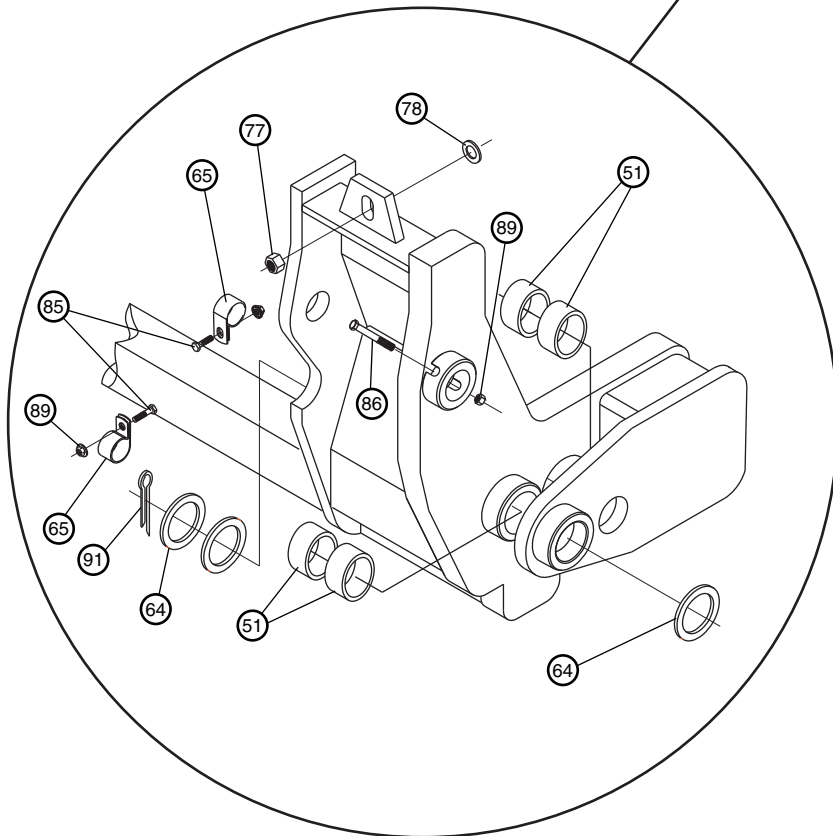
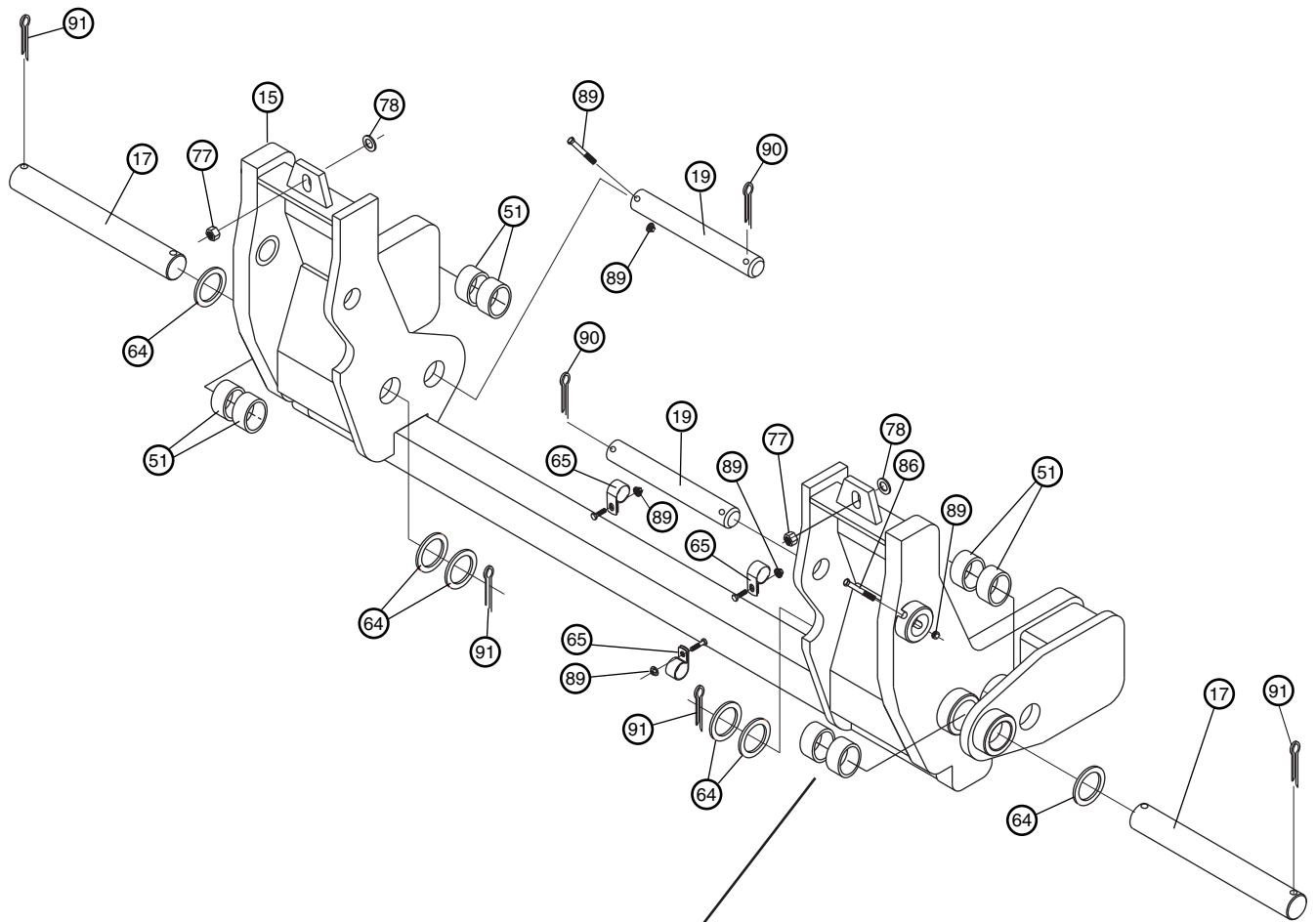


1000-03

Rocker Assembly

<i>Item</i>	<i>Part No. MTU</i>	<i>Part No. MTU-GLR</i>	<i>Description</i>	<i>Quantity</i>
15	(not used)	A-140162	Rocker Weldment – Complete (includes bushings and cross member) (tube)1	1
17	A-140176	A-140176	Long Pivot Pin (1 ¼" Dia., notched)	2
19	A-140174	A-140174	Upper Cylinder Pin (1" Dia.)	2
51	ATU-430	ATU-430	Bushing, 1 ¼" ID x 1 ½" OD x ¾" Long (plastic)	8
64	ATU-134	ATU-134	Ring Washer, 1 ¼" I.D., 1 7/8" O.D. X 1/8" thick	6
65	(not used)	A-132115	Hydraulic Hose Clamp, 5/8" (steel vinyl coated)	3
77	A-132038	A-132038	Nut, Flanged, 3/8–16, Whiz-Lock™	2
78	2058	2058	Flat Washer, 3/8"	2
86	ATU-358	ATU-358	Bolt, ¼–20 x 2" Long, Grade 8	2
89	ATU-359	ATU-359	Nut, Top Locking, ¼–20	2
90	A-132026	A-132026	Cotter Pin, ¼" Dia. X 1 ½" Long (stainless steel)	4
91	A-132027	A-132027	Cotter Pin, ¼" Dia. X 2" Long (stainless steel)	4

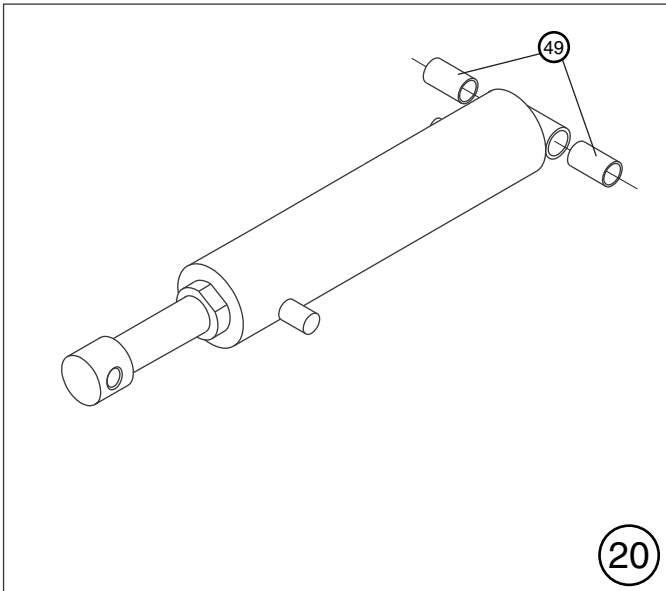
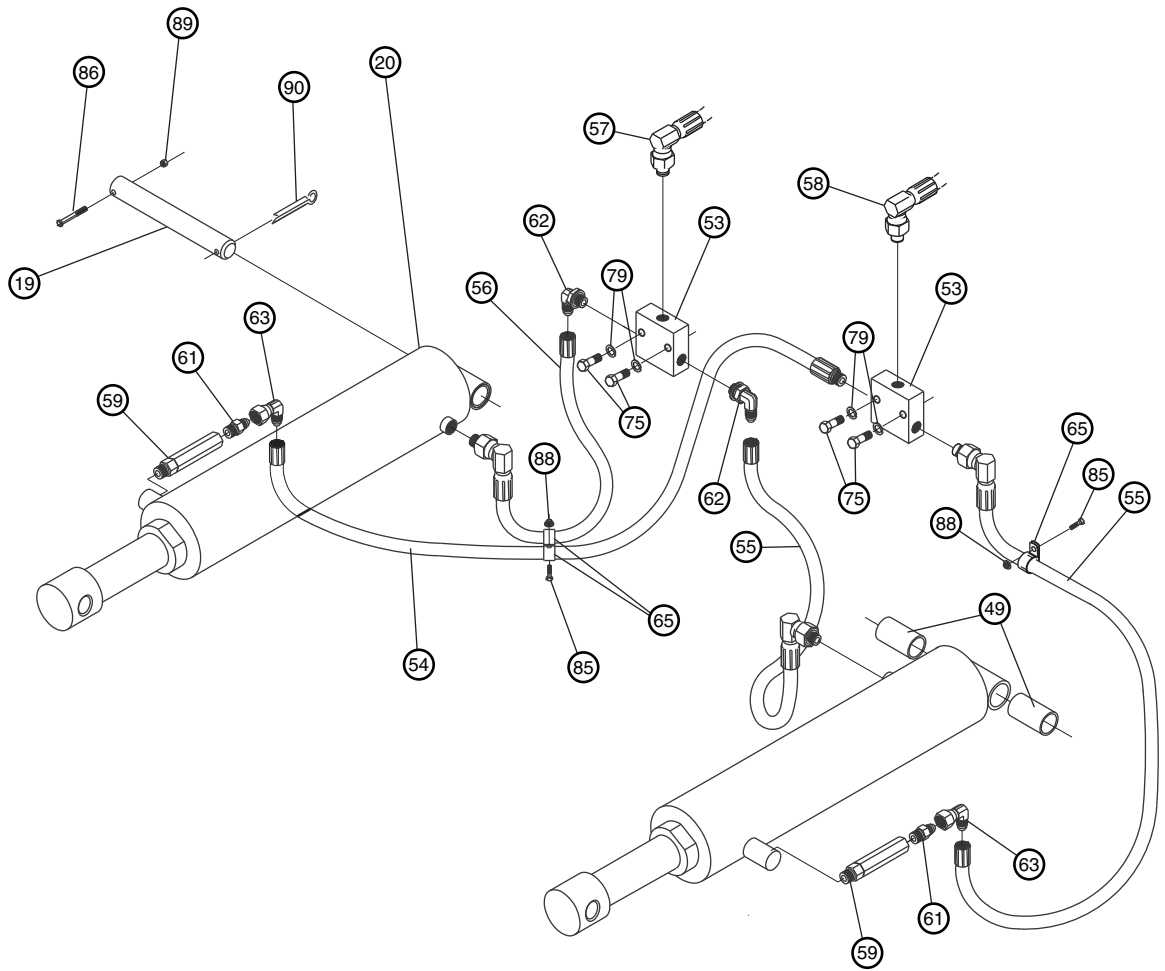
Rocker Assembly



Hydraulic Cylinders

Item	Part No. MTU	Part No. MTU-GLR	Description	Quantity
19	A-140174	A-140174	Upper Cylinder Pin (1" Dia.)	2
20	A-130113	A-130113	Hydraulic Cylinder Assembly, 3,000 LB. Capacity – includes bushings (49)	2
	A-130114	A-130114	Hydraulic Cylinder Assembly, 4,000 LB. Capacity – includes bushings (49)	
49	ATU-427	ATU-427	Bushing, 1" ID x 1 ¼" OD x 2" Long (plastic), (2 per cylinder)	4
53	A-130030	A-130030	T-Fitting Block	2
54	A-130131	A-130131	Hydraulic Hose Assembly (T-Block to Cylinder, 'UP', <i>Streetside</i>)	1
55	A-130210	A-130210	Hydraulic Hose Assembly (T-Block(s), RH ports to Cylinder, <i>Curbside</i>)	2
56	A-130211	A-130211	Hydraulic Hose Assembly (T-Block to Cylinder, 'DOWN', <i>Streetside</i>)	1
57	A-130212	A-130212	Hydraulic Hose Assembly (T-Block to Power Pack Unit, 'DOWN')	1
58	A-130213	A-130213	Hydraulic Hose Assembly (T-Block to Power Pack Unit, 'UP')	1
59	A-130100	A-130100	Restrictor Valve (1.50 GPM)	2
61	A-130198	A-130198	Fitting, Straight Adapter (male SAE #6 – male JIC #6)	2
62	A-130062	A-130062	Fitting, 90-Degree Adapter (male SAE #6 – male JIC #6)	2
63	A-130142	A-130142	Fitting, 90-Degree Elbow (male SAE #6 – female JIC #6)	2
65	(not used)	A-132115	Hydraulic Hose Clamp, 5/8" (steel vinyl coated)	3
75	25	25	Capscrew, 3/8–16, X 1 ½" Long	4
79	2054	2054	Lockwasher, 3/8"	4
85	(not used)	A-132035	Capscrew, ¼–20 x ¾" Long	2
86	ATU-358	ATU-358	Bolt, ¼–20 x 2" Long, Grade 8	2
88	2029	2029	Nut, Flanged, 3/8–16, Whiz-Lock™	2
89	ATU-359	ATU-359	Nut, Top Locking, ¼–20	2
90	A-132026	A-132026	Cotter Pin, ¼" Dia. X 1 ½" Long (stainless steel)	2

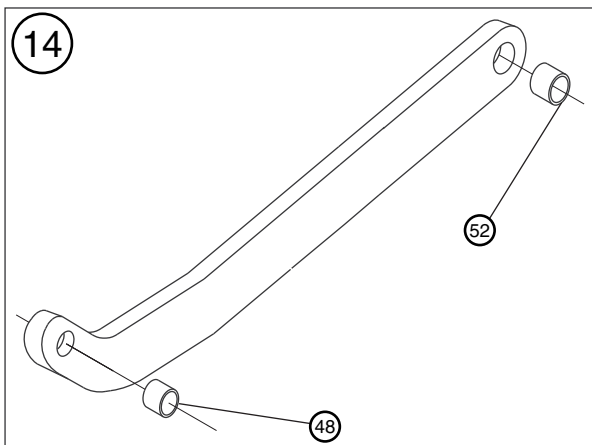
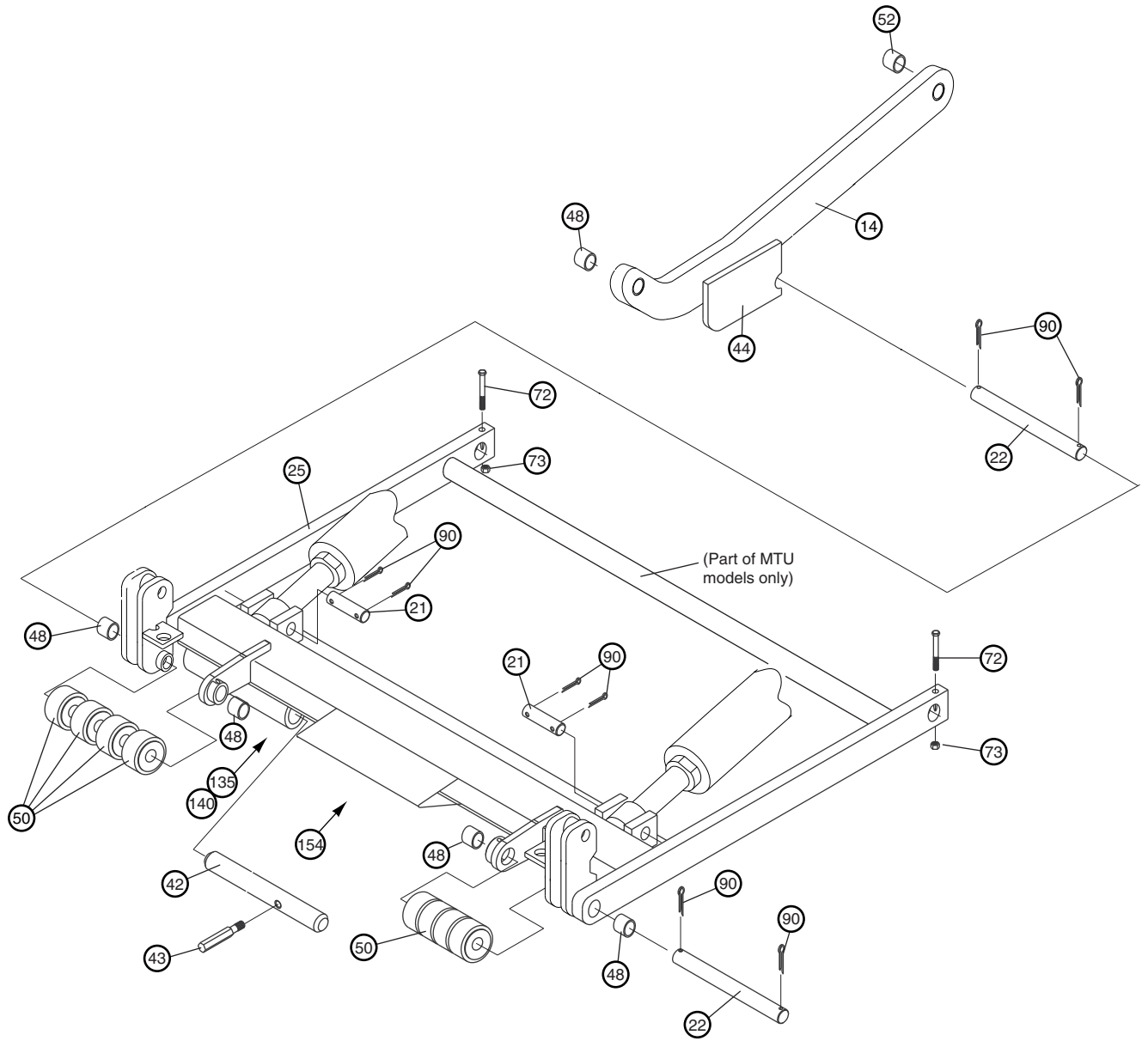
Hydraulic Cylinders



Lift Frame

<i>Item</i>	<i>Part No. MTU</i>	<i>Part No. MTU-GLR</i>	<i>Description</i>	<i>Quantity</i>
14	ATU-192	ATU-192	Radius Arm Assembly – Includes Bushings (48 & 52)	1
21	ATU-039	ATU-039	Pin, Lift Frame Cylinder Mounting (1" Dia.)	2
22	A-140173	A-140173	Pin, Roller (1" Dia.)	2
25	A-140015	A-140015	Lift Frame Weldment	1
42	ATU-556	ATU-556	Latch Pin	1
43	ATU-557	ATU-557	Latch Handle	1
44	ATU-558	ATU-558	Latch Locking Plate	1
48	ATU-426	ATU-426	Bushing, 1" ID x 1 ¼" OD x 1" Long (plastic)	4
				Choose one type or the other
50	N/A	A-140225	Roller - Short, (wheel assembly, rubber) – Includes Bushings	8
		A-140228	Roller - Long, (new) (wheel assembly, steel) – Includes Bushings	2
52	ATU-428	ATU-428	Bushing, 1 ¼" ID x 1 ½" OD x 1" Long (plastic)	10
72	A-132039	A-132039	Pin Bolt, 3/8–24, X 3" Long, Grade 8	2
73	2184	2184	Nut, Center Locking, 3/8–24	2
90	A-132026	A-132026	Cotter Pin, ¼" Dia. X 1 ½" Long (stainless steel)	8
135	ATU-143	ATU-143	Decal, Sticker -- "SECURE LATCH"...	1
140	A-131017	A-131017	Decal, Sticker -- "NOTE: DISENGAGE LATCH"...	1
154	A-131034	A131034	Decal, "Anthony Liftgates"	1

Lift Frame

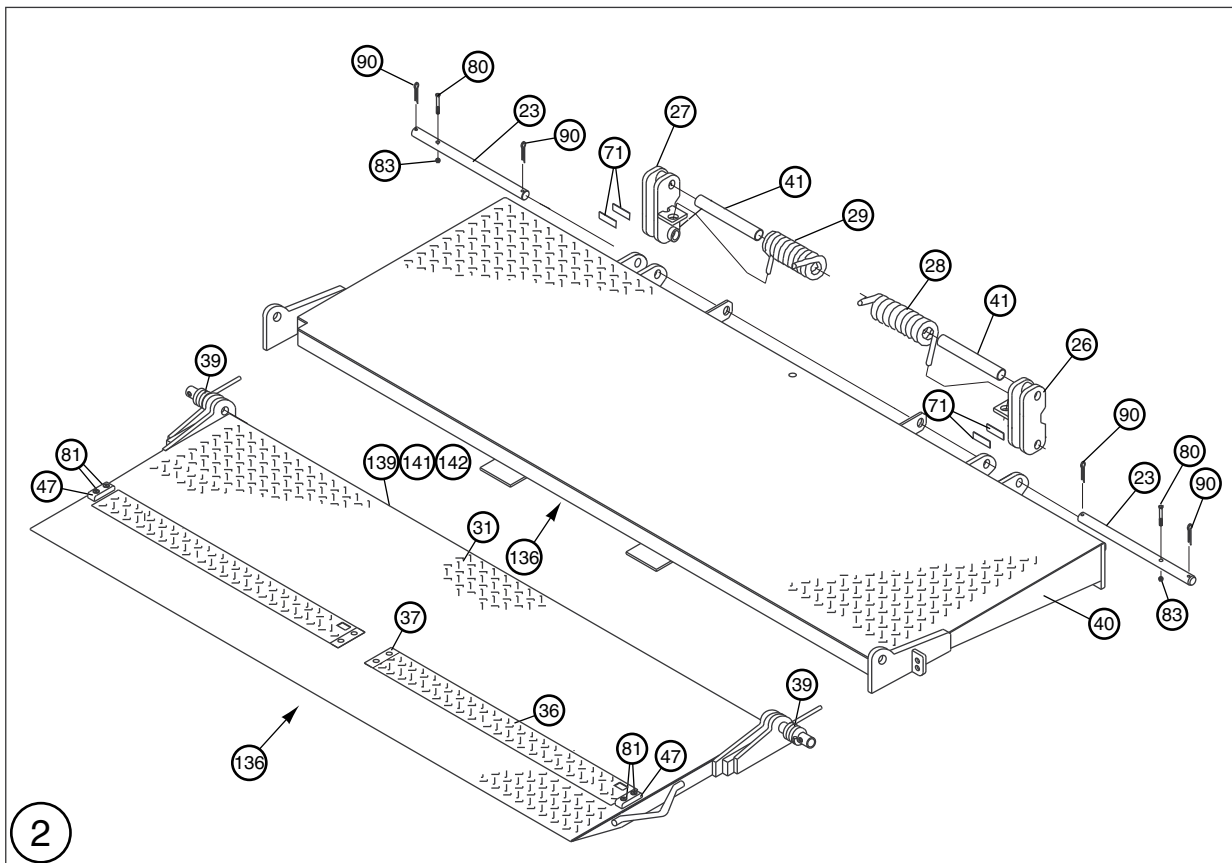
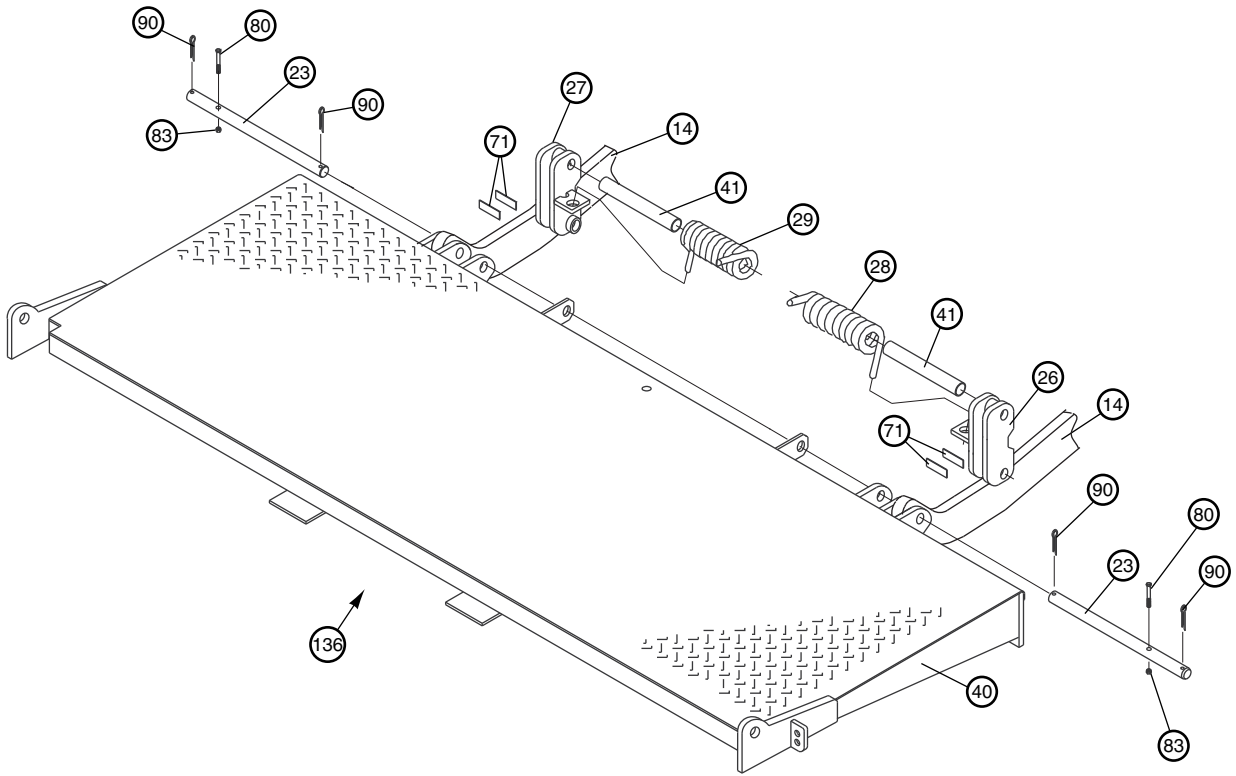


1000-06

Main Platform

<i>Item</i>	<i>Part No. MTU</i>	<i>Part No. MTU-GLR</i>	<i>Description</i>	<i>Quantity</i>
2	A-140192	A-140192	Platform – Complete Components Group	1
14	ATU-192	ATU-192	Radius Arm Assembly – Includes Bushings	2
23	A-140023	A-140023	Pin, Main Platform – Wide Arm (1" Dia.)	2
26	A-140053	A-140196	Cam Plate, Weldment – <i>Curbside</i>	1
27	A-140025	A-140195	Cam Plate, Weldment – <i>Streetside</i>	1
28	A-140070	A-140070	Spring, Main Platform – <i>Curbside</i>	1
29	A-140071	A-140071	Spring, Main Platform – <i>Streetside</i>	1
40	A-140178	A-140178	Main Platform Weldment (steel)	1
41	A-140095	A-140095	Spring Spacer Tube – Main Platform	2
71	ATU-071	ATU-071	Shim, #14 Gauge (steel)	(As req'd.)
80	870	870	Bolt, 5/16–18, X 1 ¼" Long, Grade 8 (Replaces ATU-358, Bolt, ¼ –20 X 1 ¼" Long previously used)	2
83	862	862	Nut, Hex, Center Locking, 5/16–18	2
90	A-132026	A-132026	Cotter Pin, ¼" Dia. X 1 ½" Long (stainless steel)	4
136	ATU-146	ATU-146	Decal, Sticker -- "STAND CLEAR - DO NOT RIDE"...	1

Main Platform

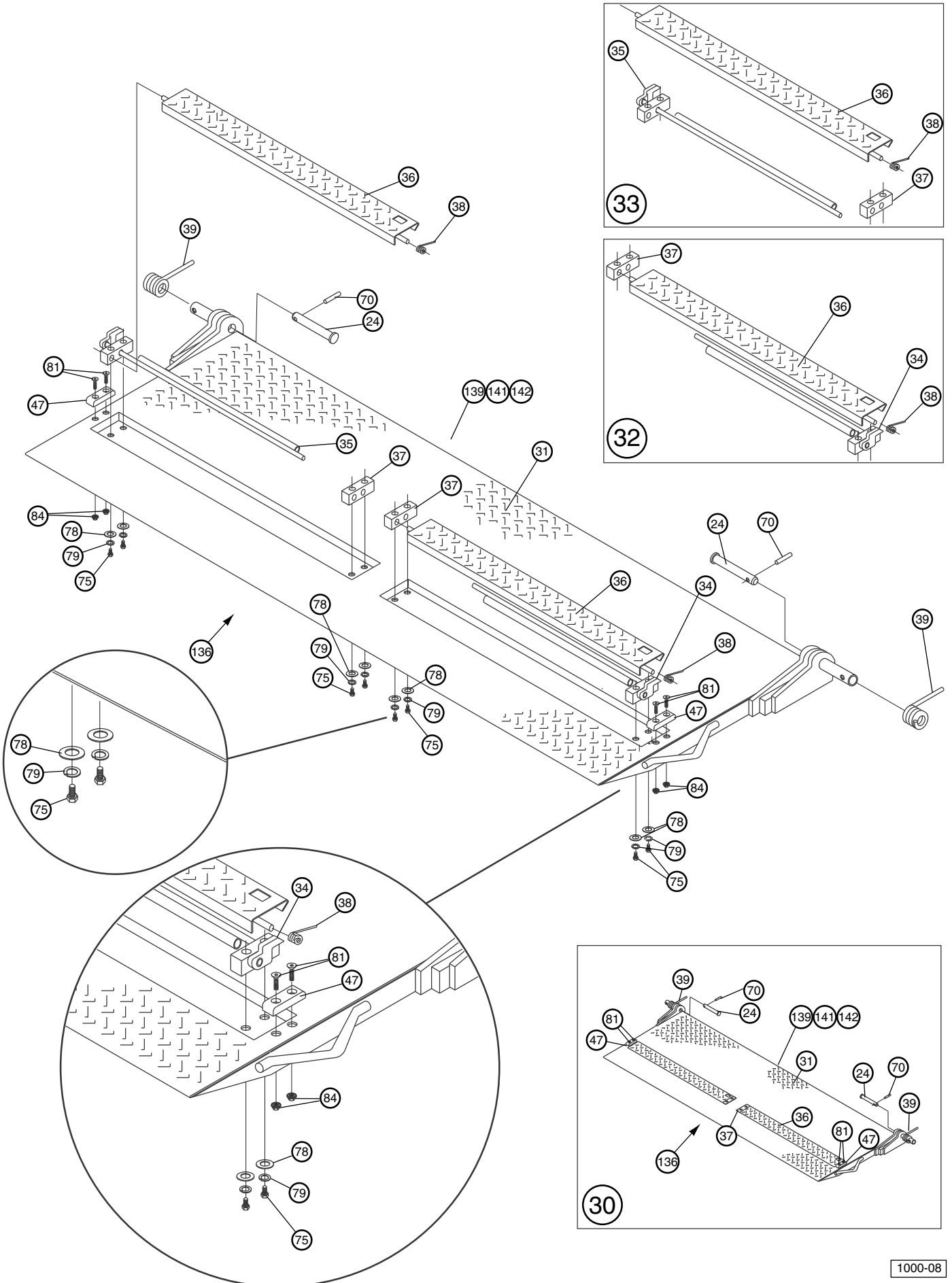


1000-07

Flip-Over Platform

Item	Part No. MTU	Part No. MTU-GLR	Description	Quantity
24	A-140005	A-140005	Pin, Flip-Over Platform Hinge (1" Dia.)	2
30	A-140083	A-140083	Flip-Over Platform – Complete Parts Assembly	1
31	A-140042	A-140042	Flip-Over Platform Weldment (aluminum)	1
32	A-140079	A-140079	Cart Stop Parts Group, <i>CurbSide</i> – Includes Items 37, 38, 34, & 36	11
33	A-140035	A-140035	Cart Stop Parts Group, <i>StreetSide</i> – Includes Items 35, 36, 37, & 38	1
34	A-140081	A-140081	Cart Stop Handle Weldment, <i>Curbside</i>	1
35	A-140080	A-140080	Cart Stop Handle Weldment, <i>Streetside</i>	1
36	A-140082	A-140082	Cart Stop Channel Weldment	2
37	A-140037	A-140037	Block, Cart Stop	2
38	A-140048	A-140048	Spring, Flip-Over Platform, Cart Stop	2
39	ATU-326M	ATU-326M	Spring, Platform Assist	2
47	A-140090	A-140090	Bumper Pad – Cart-Stop (plastic, replaces prior A-155037, Rubber Bumper Pad)	2
70	ATU-341	ATU-341	Groove Pin, 3/8" Dia. X 2 1/2" Long	2
75	25	25	Capscrew, 3/8–16, X 1 1/2" Long	8
78	2058	2058	Flat Washer, 3/8"	8
79	2054	2054	Lockwasher, 3/8"	8
81	AR-18-66	AR-18-66	Screw – Flat Head, Socket, 5/16–18 NC	4
84	2114	2114	Nut, Flanged, 5/16–18, Whiz-Lock™	4
136	ATU-146	ATU-146	Decal, Sticker -- "STAND CLEAR - DO NOT RIDE"...	1
139	A-131003	A-131003	Decal, Sticker -- "SF SERIES"	1
141	A-131026	A-131026	Decal, Sticker -- "ZERO LEAK CONCEPT"	1
142	A-150601	A-150601	Decal, Sticker -- "MADE IN THE USA" (flag)	1

Flip-Over Platform

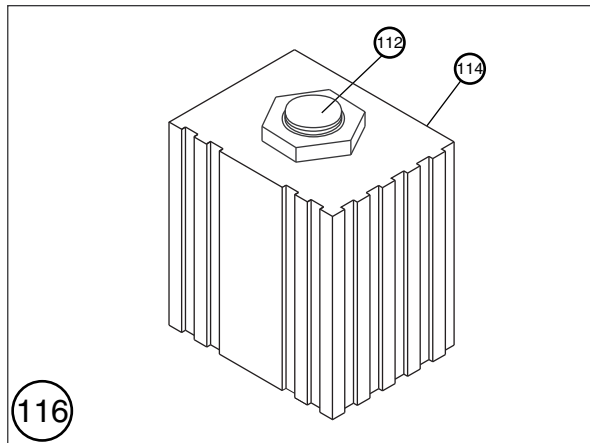
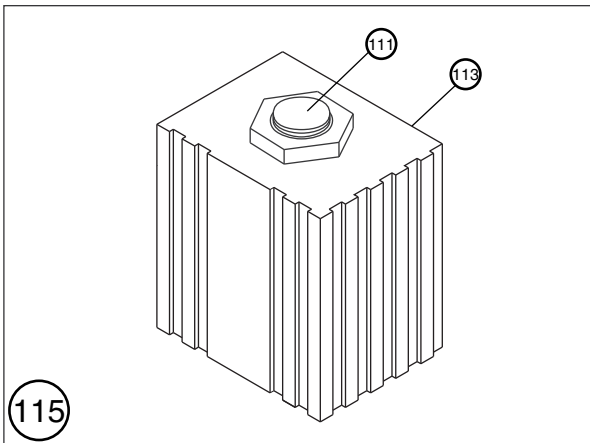
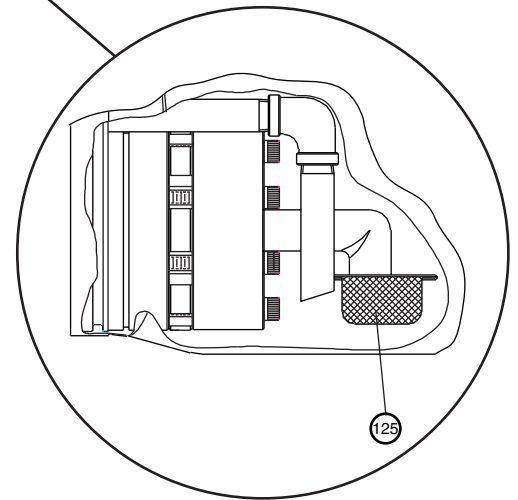
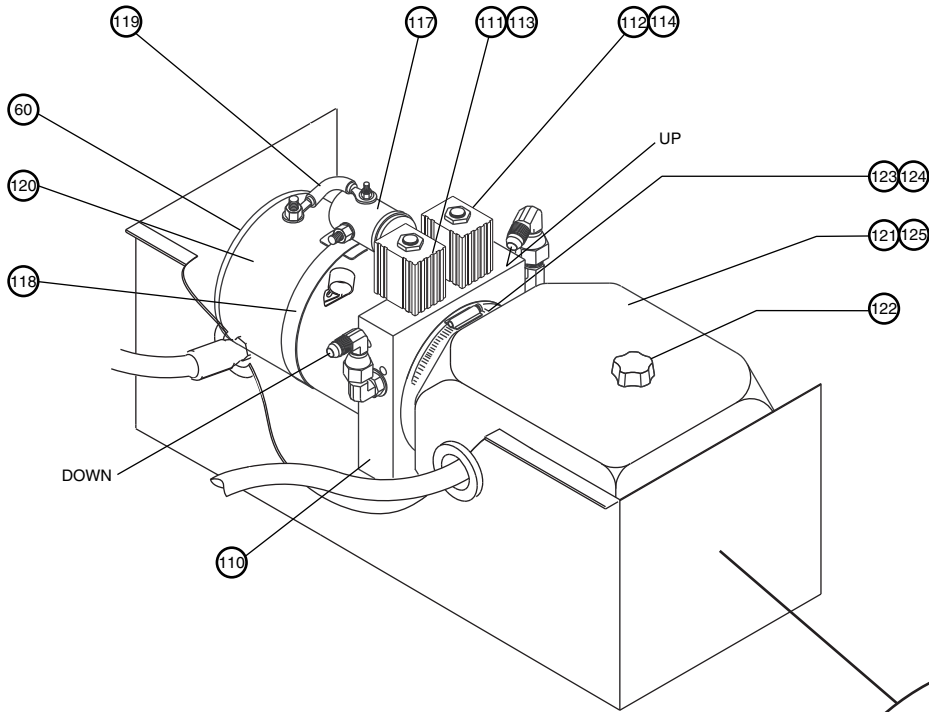


Hydraulic Power Pack Unit (“M” Type 1)

<i>Item</i>	<i>Part No.</i>	<i>Description</i>	<i>Quantity</i>
60	A-130166	MTU Power Pack Unit (“M” Type 1) (Power Down, Hi-Flow, 12 VDC, 3000 LB. Capacity)	1
110	—	Hi-Flow Pump Assembly (not serviced separately)	1
112	A-176312	Valve, Cartridge Only, 2-Way, (Lower)	1
113	A-176314	Coil Only, 12 VDC	1
114	A-176314	Coil Only, 12 VDC	1
115	A-130215	Valve, 12 VDC Coil/Cartridge Combination (raise)	1
116	A-130216	Valve, 12 VDC Coil/Cartridge Combination (lower)	1
117	ATU-120	Solenoid Relay, 12 VDC Motor Run	1
118	ATU-565	Mounting Strap, Solenoid Relay	1
119	(not used)	Conducting Cable or Strap (O.S. Type)	1
120	A-176154	Motor, 12 VDC, No Thermal Switch	1
121	A-150635	Reservoir – Includes Filler/Vent Cap	1
122	A-150546	Reservoir Filler/Vent Cap	1
123	ATU-565	Reservoir Attachment Clamp	1
124	A-130215	Reservoir Attachment O-ring	1
125	A-150016/ A-150015	Filter/Suction Pipe Assembly Note: Plastic reservoir must be removed to access the suction pipe/filter assembly.	1

Note: Used prior to February 2004.

Hydraulic Power Pack Unit ("M" Type 1)



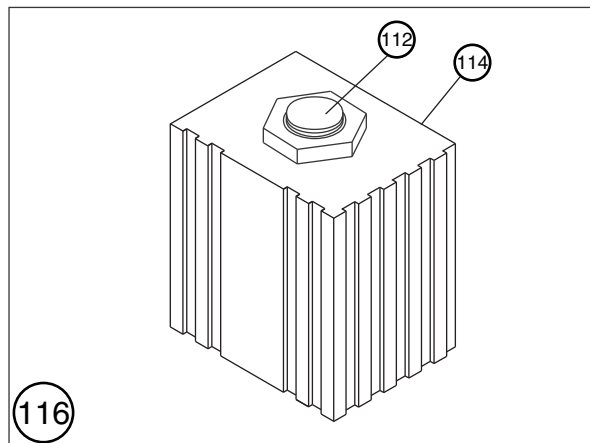
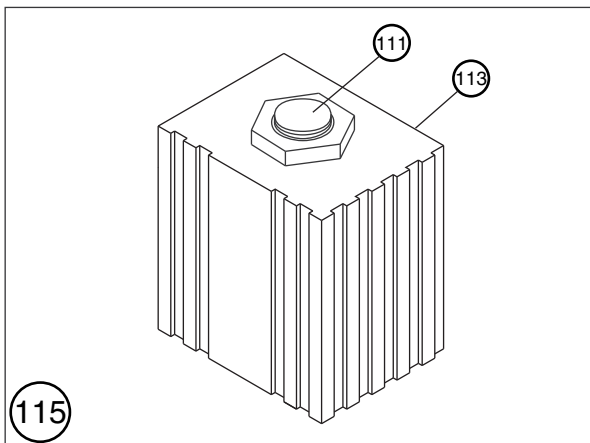
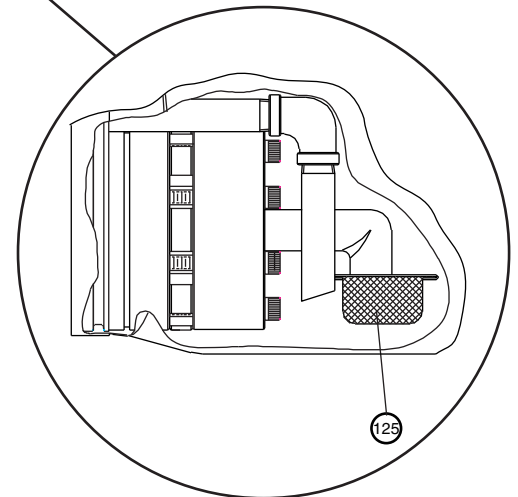
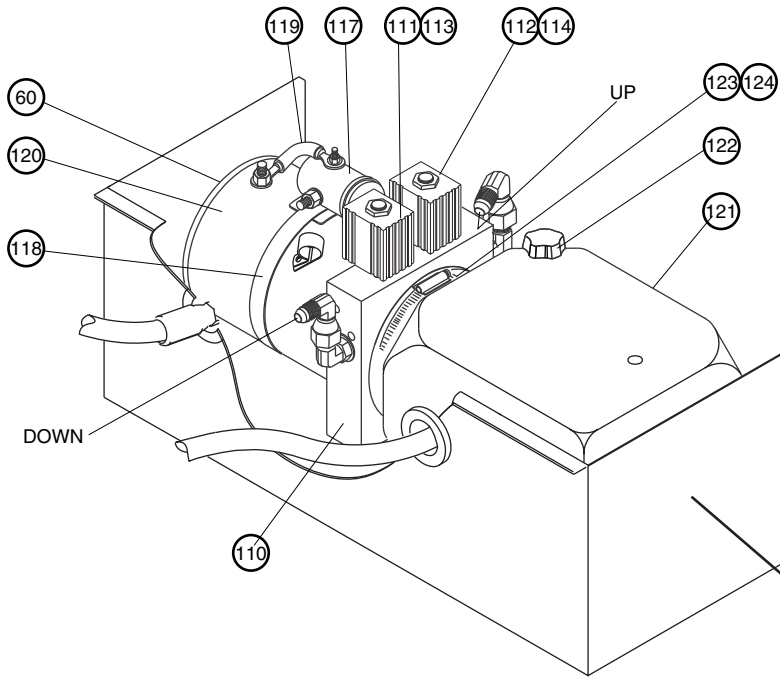
1000-09

Hydraulic Power Pack Unit (“M” Type 2)

<i>Item</i>	<i>Part No.</i>	<i>Description</i>	<i>Quantity</i>
60	A-130214	MTU Power Pack Unit (“M” Type 2) (Power Down, Hi-Flow, 12 VDC, 4000 LB. capacity with internal, automatic thermal-overload protection)	1
110	—	Hi-Flow Pump Assembly (not serviced separately)	1
112	A-176312	Valve, Cartridge Only, 2-Way (lower)	1
113	A-176314	Coil Only, 12 VDC	
114	A-176315	Coil Only, 12 VDC	1
115	A-130215	Valve, 12 VDC Coil/Cartridge Combination (raise)	1
116	A-130216	Valve, 12 VDC Coil/Cartridge Combination (lower)	1
117	ATU-120	Solenoid Relay, 12 VDC Motor Run	1
118	ATU-565	Mounting Strap, Solenoid Relay	1
119	(not used)	Conducting Cable or Strap (O.S. Type)	1
120	A-176154	Motor, 12 VDC, No Thermal Switch	1
121	A-150635	Reservoir – Includes Filler/Vent Cap	1
122	A-150546	Reservoir Filler/Vent Cap	1
123	ATU-565	Reservoir Attachment Clamp	1
124	A-150019	Reservoir Attachment O-ring	1
125	A-150016/ A-150015	Filter/Suction Pipe Assembly Note: Plastic reservoir must be removed to access the suction pipe/filter assembly.	1

Note: Used after February 2004.

Hydraulic Power Pump Unit ("M" Type 2)

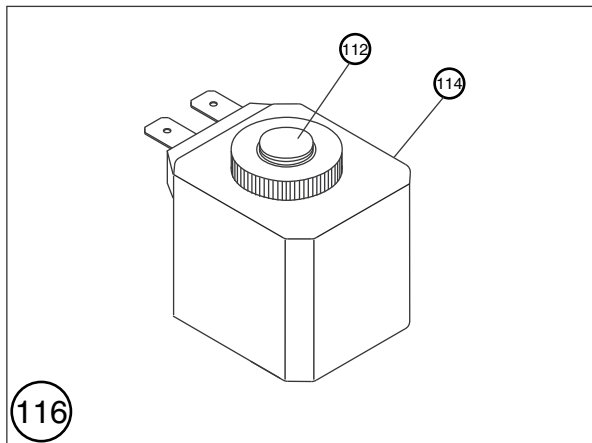
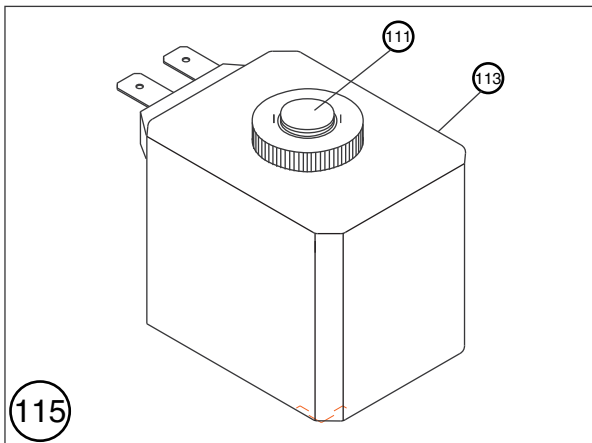
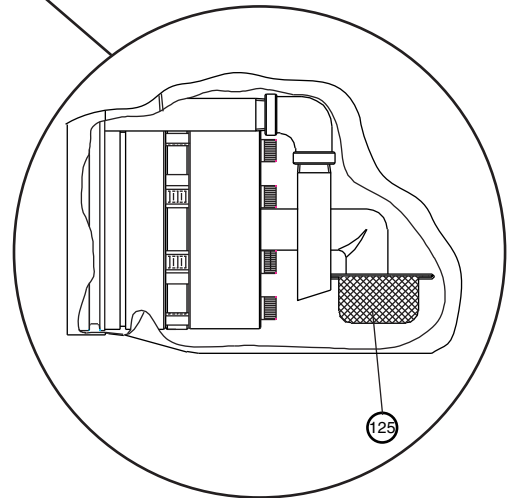
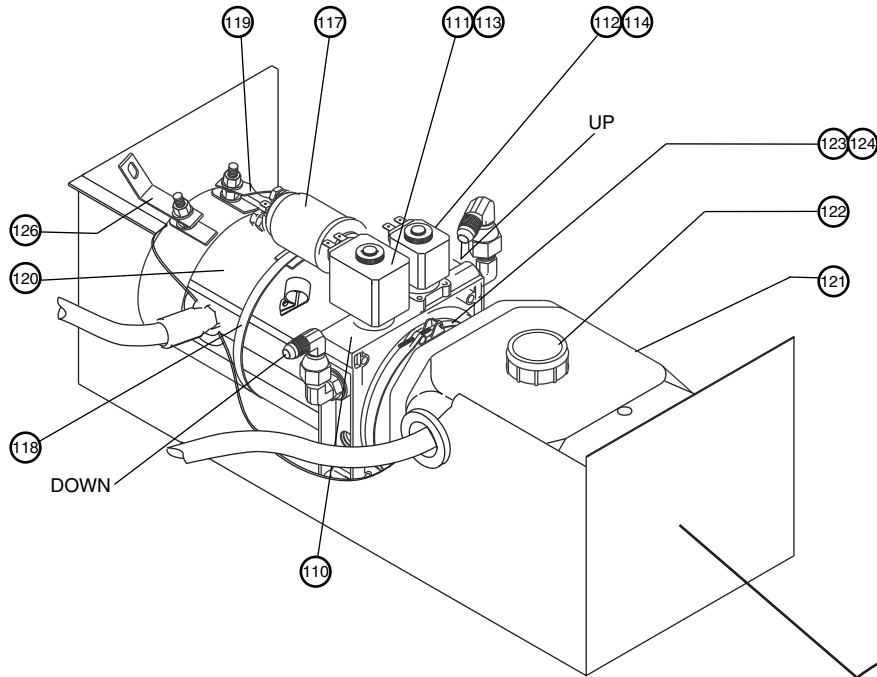


Hydraulic Power Pack Unit (“O.S.” Type)

<i>Item</i>	<i>Part No.</i>	<i>Description</i>	<i>Quantity</i>
60	A-130068	MTU Power Pack Unit (“O.S.” Type) (Power-Down, Hi-Flow, 12 VDC with internal automatic thermal overload protection) Note: “O.S.” – type units can be visually identified by the typically “gold” (zinc chromate) plated motor case (120)	1
111	A-130075	Valve, Cartridge Only, 4-Way (raise)	1
112	A-130073	Valve, Cartridge Only, 2-Way (lower)	1
113	A-130076	Coil Only, 12 VDC	1
114	A-130074	Coil Only, 12 VDC	1
115	A-130164	Valve, 12 VDC Coil/Cartridge Combination (raise)	1
117	A-130052	Solenoid Relay, 12 VDC Motor Run	1
119		Conducting Cable (O.S. Type)	1
120	A-130077	Motor, 12 VDC, No Thermal Switch	1
121	A-130056	Reservoir – Includes Filler/Vent Cap	1
122	A-130057	Reservoir Filler/Vent Cap	1
123	A-130058	Reservoir Attachment Clamp	1
124	A-130059	Reservoir Attachment O-ring	1
125	A-130060/ A-130061	Filter/Suction Pipe Assembly Note: Plastic reservoir must be removed to access the suction pipe/filter assembly.	1
126	A-130043	Grounding Bracket (electrical strap)	1

Note: Item 60, A-130068 is obsolete and should be replaced with the appropriate A-130166 (3000 LB.) or A-130214 (4000 LB.) MTU Power Pack Unit.

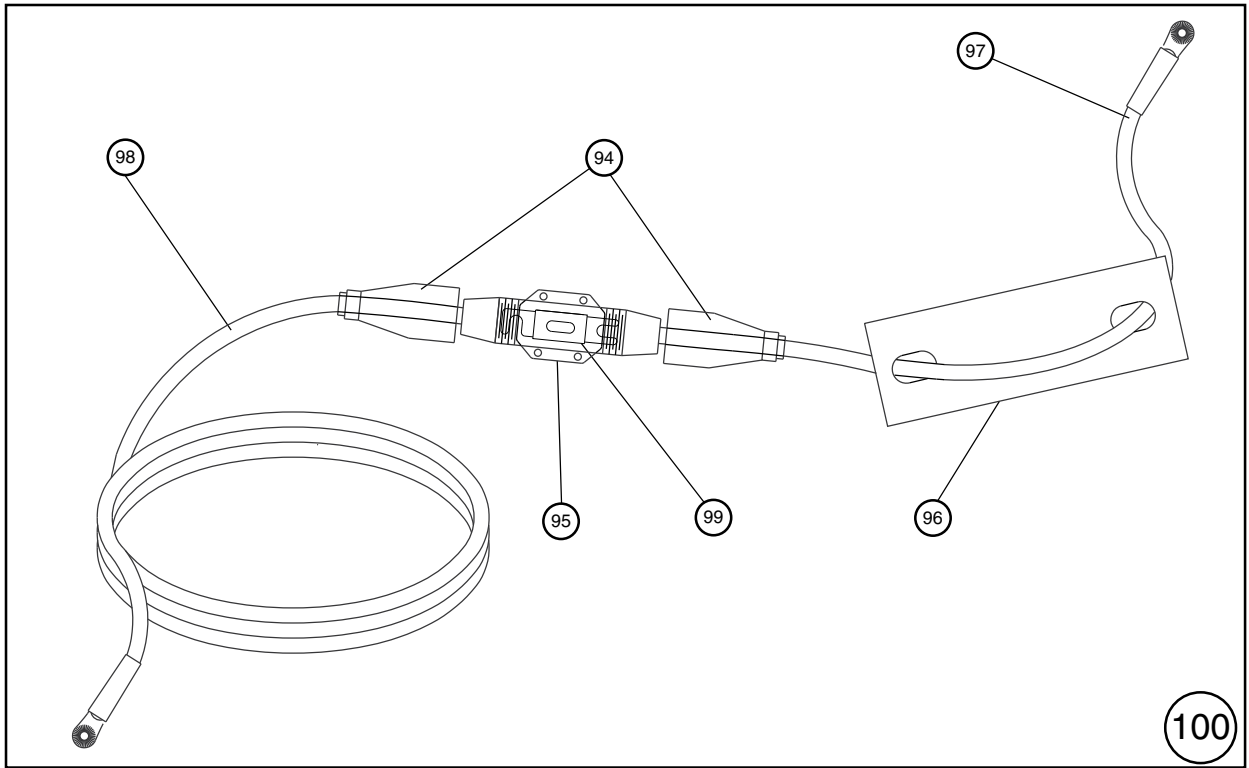
Hydraulic Power Pack Unit ("O.S." Type)



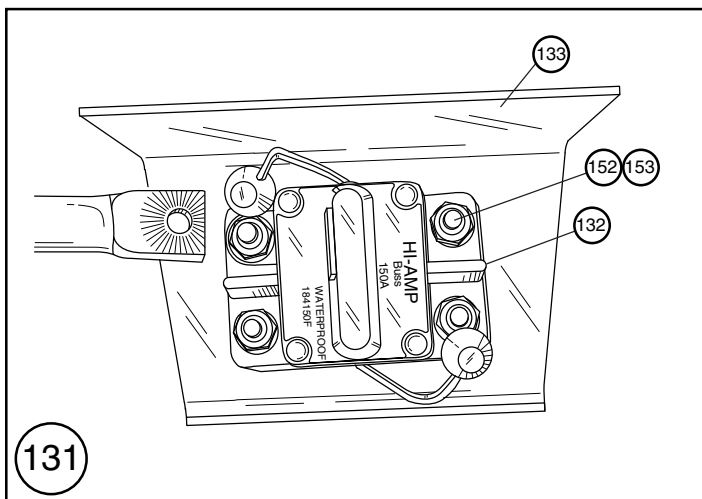
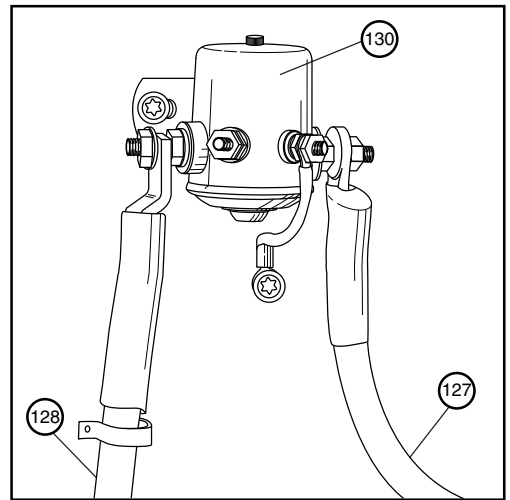
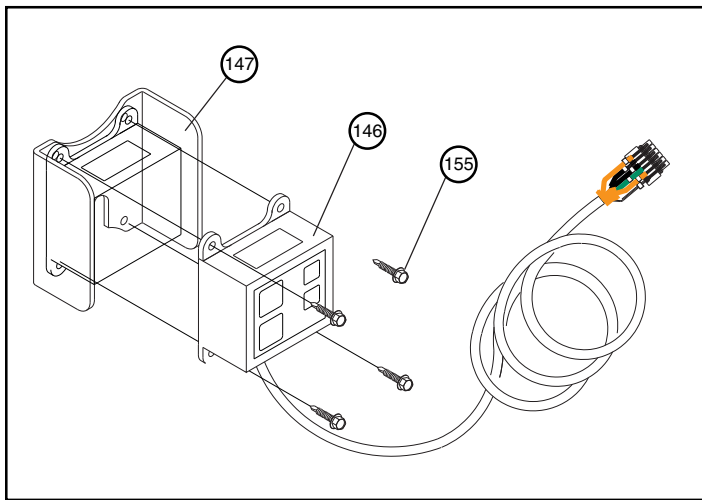
Fuse Assembly

<i>Item</i>	<i>Part No. MTU</i>	<i>Part No. MTU-GLR</i>	<i>Description</i>	<i>Quantity</i>
94	A-133048	A-133048	Boot, Weather Seal (rubber)	2
95	A-133062	A-133062	Fuse Holder, In-Line	1
96	A-131036	A-131036	Wire Placard -- "WARNING"...(fuse replacement instruction)	1
97	ATU-434	ATU-434	Power Lead, Short – Includes end-lug & heat shrink	1
98	ATU-435	ATU-435	Power Lead, Long – Includes end-lug & heat shrink	1
99	A-133063	A-133063	Fuse, 200 AMP	1
100	A-133105	A-133105	Circuit Protection/Parts Group – Fuse Type 200 AMP (includes items 94 thru 99)	1
127	ATU-434	ATU-434	Battery Cable, Short – Includes two end-lugs & heat shrink	1
128	ATU-435	ATU-435	Battery Cable, Long – Includes two end-lugs & heat shrink	1
129	A-150031	A-150031	Switch, Cut-Off – Manual	1
130	A-133036	A-133036	Switch, Cut-Off – Solenoid Kit, (Optional, replaces A-150031, Manual Operating Cut-Off Switch)	1
131	A-150411	(not used)	Circuit Protection Assembly, Circuit Breaker Type – Includes Items 132, 133, 152, & 153	1
132	A-150495	(not used)	Circuit Breaker, 150 AMP	1
133	A-150500	(not used)	Circuit Breaker Bracket	1
146	A-133186	A-133186	Control, Raise/Lower – Low Voltage (LVC) Power Down	1
147	ATU-748	ATU-748	LVC Control Switch Guard	1
152	2029	2029	Flanged Nut, 1/4-20, Whiz-Lock™	1
153	718	718	Bolt 1/4-20 NC x 1" Long	2
155			Sheet Metal Screw (for LVC control bracket)	4

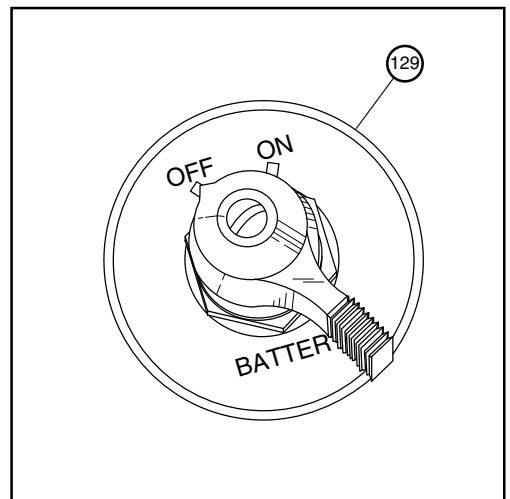
Fuse Assembly



100



131

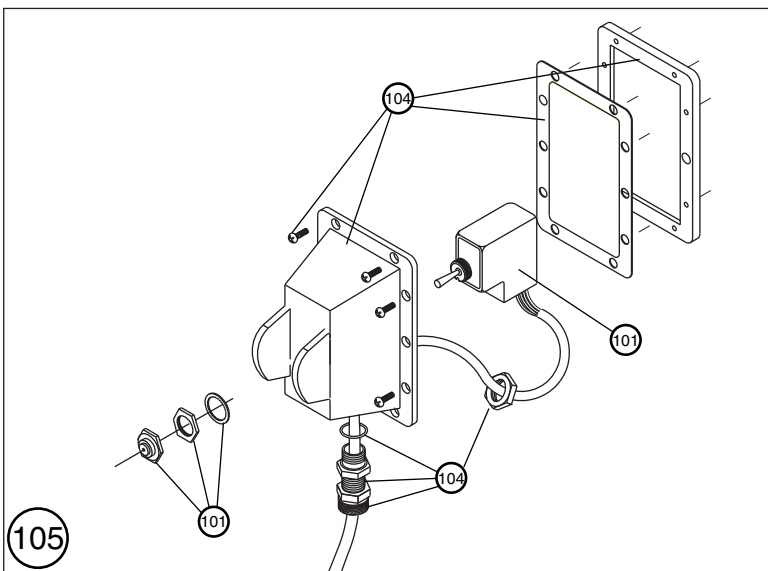
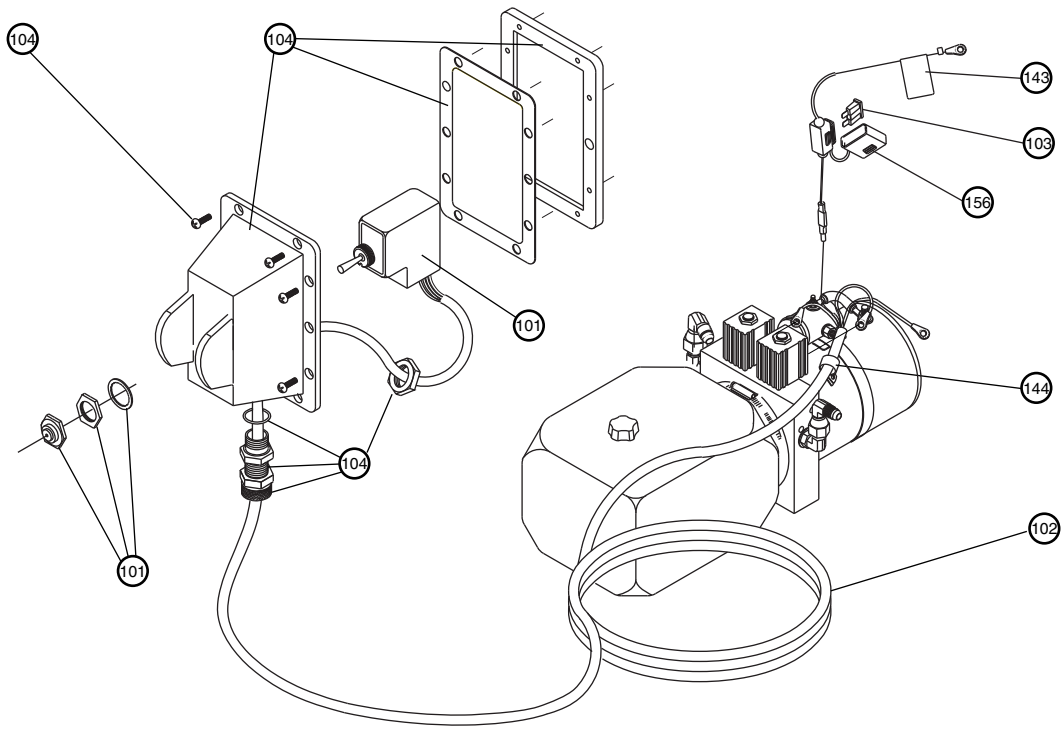


129

Control Switch Assembly, Raise/Lower

<i>Item</i>	<i>Part No. MTU</i>	<i>Part No. MTU-GLR</i>	<i>Description</i>	<i>Quantity</i>
101	A-133144	A-133144	Switch, Raise/Lower Toggle, (potted assembly)	1
102	A-150411	A-150411	Control Cable Harness with Circuit Protection (includes item 156)	1
103	A-150438	A-150438	Fuse, 10 AMP	1
104	ATU-394	ATU-394	Switch Enclosure, 'UP'/'DOWN', (box, cover, gasket seal, eight screws, and strain-relief assembly)	1
105	ATU-396	ATU-396	Switch, Raise/Lower Control – Complete Assembly – Includes Items 101 thru 104)	1
143	A-131001	A-131001	Decal, Wire Tag -- “10 AMP FUSE & HOLDER”...	1
144	A-150095	(not used)	Wire Tie (plastic)	1
156	A-150437	A-150437	Fuse Holder, In-Line	1

Control Switch Assembly, Raise/Lower



105

1000-13

Complete Parts List

Item	Part No. MTU	Part No. MTU-GLR	Description	Quantity MTU / MTU-GLR
1	A-140028	A-140028	Floor Extension, Weldment – 96" Wide	Specify one
	A-140056	A-140056	Floor Extension, Weldment – 102" Wide	
2	A-140192	A-140192	Platform – Complete Components Group	1
3	A-140062	A-140062	Dock Bumper Weldment, <i>Curbside</i>	1
4	A-140064	A-140064	Dock Bumper Weldment, <i>Streetside</i>	1
5	A-140112	A-140112	Dock Bumper Weldment (includes items 3, 4, 150, & 151)	(As req'd.)
6	A-140022	A-140022	Mounting Plate	2
7	ATU-533	ATU-533	Pump Box Cover	1
8	ATU-531	ATU-531	Pump Box Enclosure	1
9	A-140011	A-140150	Adapter Frame Weldment – Note: Includes item 8	1
10	A-140125	A-140125	Wheel Arm Assembly (includes items 11, 12, 66, 67, 68, 69, 72, & 73)	1
11	ATU-340	ATU-340	Wheel Arm – Weldment	1
12	ATU-123	ATU-123	Wheel – Includes Spacers and Washers	1
13	A-140096	A-140096	Spacer Block	1
14	ATU-192	ATU-192	Radius Arm Assembly – Includes bushings (48 & 52)	1
15	(not used)	A-140162	Rocker Weldment – Complete (includes bushings and cross member) (tube)	0 / 1
16	A-140177	A-140177	Link Pin (1 ¼" Dia.)	2
17	A-140176	A-140176	Long Pivot Pin (1 ¼" Dia., notched)	2
18	(not used)	A-140175	Rocker Pin (1 ¼" Dia.)	2
19	A-140174	A-140174	Upper Cylinder Pin (1" Dia.)	2
20	A-130113	A-130113	Hydraulic Cylinder Assembly, 3,000 LB. Capacity – Includes Bushings (49)	2
	A-130113	A-130114	Hydraulic Cylinder Assembly, 4,000 LB. Capacity – Includes Bushings (49)	
21	ATU-039	ATU-039	Pin, Lift Frame Cylinder Mounting (1" Dia.)	2
22	A-140173	A-140173	Pin, Roller (1" Dia.)	2
23	A-140023	A-140023	Pin, Main Platform – Wide Arm (1" Dia.)	2
24	A-140005	A-140005	Pin, Flip-Over Platform Hinge (1" Dia.)	2
25	A-140015	A-140015	Lift Frame Weldment	1
26	A-140053	A-140196	Cam Plate, Weldment – <i>Curbside</i>	1
27	A-140025	A-140195	Cam Plate, Weldment – <i>Streetside</i>	1
28	A-140070	A-140070	Spring, Main Platform – <i>Curbside</i>	1
29	A-140071	A-140071	Spring, Main Platform – <i>Streetside</i>	1
30	A-140083	A-140083	Flip-Over Platform – Complete Parts Assembly	1

Item	Part No. MTU	Part No. MTU-GLR	Description	Quantity MTU / MTU-GLR
31	A-140042	A-140042	Flip-Over Platform Weldment (aluminum)	1
32	A-140079	A-140079	Cart Stop Parts Group, <i>Curbside</i> (includes items 34, 36, 37, & 38)	1
33	A-140035	A-140035	Cart Stop Parts Group, <i>StreetSide</i> (includes items 35, 36, 37, & 38)	1
34	A-140081	A-140081	Cart Stop Handle Weldment, <i>Curbside</i>	1
35	A-140080	A-140080	Cart Stop Handle Weldment, <i>Streetside</i>	1
36	A-140082	A-140082	Cart Stop Channel Weldment	2
37	A-140037	A-140037	Block, Cart Stop	2
38	A-140048	A-140048	Spring, Flip-Over Platform, Cart Stop	2
39	ATU-326M	ATU-326M	Spring, Platform Assist	2
40	A-140178	A-140178	Main Platform Weldment (steel)	1
41	A-140095	A-140095	Spring Spacer Tube – Main Platform	2
42	ATU-556	ATU-556	Latch Pin	1
43	ATU-557	ATU-557	Latch Handle	1
44	ATU-558	ATU-558	Latch Locking Plate	1
45	A-140089	A-140089	Platform Support Bracket Assembly (includes 47, 87, & 89)	4
46	A-140086	A-140086	Platform Support Plate (bracket)	4
47	A-140090	A-140090	Bumper Pad – Cart-Stop and/or Platform Support Plate (plastic, replaces prior A-155037, Rubber Bumper Pad)	4
48	ATU-426	ATU-426	Bushing, 1" ID x 1 ¼" OD x 1" Long (plastic)	4
49	ATU-427	ATU-427	Bushing, 1" ID x 1 ¼" OD x 2" Long (plastic)	4 (2 per cyl.)
				Choose one type or the other
50	N/A	A-140225	Roller - Short, (wheel assembly, rubber) – Includes Bushings	8
		A-140228	Roller - Long, (new) (wheel assembly, steel) – Includes Bushings	2
51	ATU-430	ATU-430	Bushing, 1 ¼" ID x 1 ½" OD x ¾" Long (plastic)	12
52	ATU-428	ATU-428	Bushing, 1 ¼" ID x 1 ½" OD x 1" Long (plastic)	10
53	A-130030	A-130030	T-Fitting Block	2
54	A-130131	A-130131	Hydraulic Hose Assembly (T-Block to Cylinder, 'UP', <i>Streetside</i>)	1
55	A-130210	A-130210	Hydraulic Hose Assembly (T-Block(s), RH ports to Cyl., <i>Curbside</i>)	2
56	A-130211	A-130211	Hydraulic Hose Assembly (T-Block to Cyl., 'DOWN', <i>Streetside</i>)	1
57	A-130212	A-130212	Hydraulic Hose Assembly (T-Block to Power Pack Unit, 'DOWN')	1
58	A-130213	A-130213	Hydraulic Hose Assembly (T-Block to Power Pack Unit, 'UP')	1
59	A-130100	A-130100	Restrictor Valve (1.50 GPM)	2

Item	Part No. MTU	Part No. MTU-GLR	Description	Quantity MTU / MTU-GLR
60	A-130166 (3000 LB Cap.) A-130214 (4000# cap.)	A-130166 (3000# Cap.) A-130214 (4000# cap.)	MTU Power Pack Unit – Complete Unit (A-130068, Oil Sitems is OBSOLETE) <i>(Note: Refer to items 110 - 126 for individual components identification)</i>	1
61	A-130198	A-130198	Fitting, Straight Adapter (male SAE #6 – male JIC #6)	2
62	A-130062	A-130062	Fitting, 90-degree. Adapter (male SAE #6 – male JIC #6)	4
63	A-130142	A-130142	Fitting, 90-degree. Elbow (male SAE #6 – female JIC #6)	4
64	ATU-134	ATU-134	Ring Washer, 1 ¼" I.D., 1 7/8" O.D. X 1/8" thick.	12
65	(not used)	A-132115	Hydraulic Hose Clamp, 5/8" (steel vinyl coated)	0 / 5
66	ATU-259	ATU-259	Bolt, ½–13 NC, X 2" Long, Grade 8	1
67	A-176546	A-176546	Bolt, ½–13 NC, X 3 ½" Long, Grade 8	1
68	A-132024	A-132024	Nut, Locking ½–13 NC – Wheel Arm, Top	1
69	1691	1691	Lockwasher, ½", Wheel Arm, Top	1
70	ATU-341	ATU-341	Groove Pin, 3/8" Dia. X 2 ½" Long	2
71	ATU-071	ATU-071	Shim, #14 Gauge (steel)	(As req'd.)
72	A-132039	A-132039	Pin Bolt, 3/8–24, X 3" Long, Grade 8	3
73	2184	2184	Nut, Center Locking, 3/8–24	3
74	ATU-247	ATU-247	Capscrew, 3/8–16, X 1 ¼" Long	2
75	25	25	Capscrew, 3/8–16, X 1 ½" Long	12
76	2149	2149	Bolt, 3/8–16, X 2 ½" Long	4 / 6
77	A-132038	A-132038	Nut, Flanged, 3/8–16, Whiz-Lock™	4 / 6
78	2058	2058	Flat Washer, 3/8"	10 / 14
79	2054	2054	Lockwasher, 3/8"	10
80	870	870	Bolt, 5/16–18, X 1 ¼" Long., Grade 8 (Replaces ATU-358, Bolt, ¼–20 X 1 ¼" Long previously used)	2
81	AR-18-66	AR-18-66	Screw – Flat Head, Socket, 5/16–18 NC	4
82	A-132029	A-132029	Thumbscrew, 5/16–18, Plated	2
83	862	862	Nut, Hex, Center Locking, 5/16–18	2
84	2114	2114	Nut, Flanged, 5/16–18, Whiz-Lock™	4
85	A-132035	A-132035	Capscrew, ¼–20 x ¾" Long	0 / 1
86	ATU-358	ATU-358	Bolt, ¼–20 x 2" Long, Grade 8	2 / 4
87	S-047004	S-047004	Screw, ¼–20 x 1" Long	8
88	2029	2029	Nut, Flanged ¼–20 NC Whiz-Lock™	2
89	ATU-359	ATU-359	Nut, Top Locking, ¼–20	15
90	A-132026	A-132026	Cotter Pin, ¼" Dia. X 1 ½" Long (stainless steel)	14

Item	Part No. MTU	Part No. MTU-GLR	Description	Quantity MTU / MTU-GLR
91	A-132027	A-132027	Cotter Pin, 1/4" Dia. X 2" Long (stainless steel)	8 / 12
92	ATU-126	ATU-126	Dock Bumper Pad (rubber/steel)	2
93	ATU-137	ATU-137	Grommet (rubber)	4
94	A-133048	A-133048	Boot, Weather Seal (rubber)	2
95	A-133062	A-133062	Fuse Holder, In-Line	1
96	A-131036	A-131036	Wire Placard -- "WARNING"... (fuse replacement instruction)	1
97	ATU-434	ATU-434	Power Lead, Short -- Includes End-Lug and Heat Shrink	1
98	ATU-435	ATU-435	Power Lead, Long -- Includes End-Lug and Heat Shrink	1
99	A-133063	A-133063	Fuse, 200 AMP	1
100	A-133105	A-133105	Circuit Protection Assembly/Parts Group -- Fuse Type 200 AMP (includes Item Nos. 94 thru 99)	1
101	A-133144	A-133144	Switch, Raise/Lower Toggle (potted assembly)	1
102	A-150411	A-150411	Control Cable Harness with Circuit Protection (includes item 156)	1
103	A-150438	A-150438	Fuse, 10 AMP	1
104	ATU-394	ATU-394	Switch Enclosure, 'UP'/'DOWN' (box, cover, gasket seal, eight screws, and strain-relief assembly)	1
105	ATU-396	ATU-396	Switch, Raise/Lower Control -- Complete Assembly (includes Item Nos. 101 thru 104)	
106	Q-003013	Q-003013	Decal, Sticker -- "URGENT WARNING"... (elevating gate)	1
107	ATU-423	ATU-423	Decal, Sticker -- "OPERATING INSTRUCTIONS"...	1
108	A-150238	A-150238	Decal, Sticker -- "NOTICE"... (electrical overload breaker)	1
109	ATU-141	ATU-141	Decal, Sticker -- "AFTER USING LIFTGATE"... Secure	1

Item No.	"M" *Type 1 A130166 (See Page 24) Part No.	"M" *Type 2 A130214 (See Page 26) Part No.	"O.S." Type A130068 (See Page 28) Part No.	MTU/GLR Power Pack Unit(s) Component(s) Description Item 60	Qty.
110	(not used)	(not used)	(not used)	Hi-Flow Pump Assembly	1
111	(not used)	(not used)	A-130075	Valve, Cartridge Only, 4-Way (raise)	1
112	A-176312	A-176312	A-130073	Valve, Cartridge Only, 2-Way (lower)	1
113	A-176314	A-176314	A-130076	Coil Only, 12 VDC	1
114	A-176314	A-176315	A-130074	Coil Only, 12 VDC	1
115	A-130215	A-130215	A-130164	Valve, 12 VDC Coil/Cartridge Combination (raise)	1
116	A-130216	A-130216	(not used)	Valve, 12 VDC Coil/Cartridge Combination (lower)	1
117	ATU-120	ATU-120	A-130052	Solenoid Relay, 12 VDC Motor Run	1
118	ATU-565	ATU-565	(not used)	Mounting Strap, Solenoid Relay	1
119	(not used)	(not used)		Conducting Cable or Strap (O.S. Type)	1
120	A-176154	A-176154	A-130077	Motor, 12 VDC, No Thermal Switch	1
121	A-150635	A-150635	A-130056	Reservoir – Includes Filler/Vent Cap	1
122	A-150546	A-150546	A-130057	Reservoir Filler/Vent Cap	1
123	ATU-565	ATU-565	A-130058	Reservoir Attachment Clamp	1
124	A-130215	A-150019	A-130059	Reservoir Attachment O-ring	1
125	A-150016/ A-150015	A-150016/ A-150015	A-130060/ A-130061	Filter/Suction Pipe Assembly	1
126	(not used)	(not used)	A-130043	Grounding Bracket (electrical strap)	1

*Type 1, manufactured prior to February 2004: Type 2, manufactured after February. 2004.

Item	Part No. MTU	Part No. MTU-GLR	Description	Quantity MTU / MTU-GLR
127	ATU-434	ATU-434	Battery Cable, Short – Includes Two End-Lugs and Heat Shrink	1
128	ATU-435	ATU-435	Battery Cable, Long – Includes Two End-Lugs and Heat Shrink	1
129	A-150031	A-150031	Switch, Cut-Off – Manual Operating	1
130	A-133036	A-133036	Switch, Cut-Off – Solenoid Kit (Optional, replaces A-150031, Manual Operating Cut-Off Switch)	1
131	A-150411	(not used)	Circuit Protection Assembly, Circuit Breaker Type (includes items 132, 133, 152, & 153)	1
132	A-150495	(not used)	Circuit Breaker, 150 AMP	1 / 0
133	A-150500	(not used)	Circuit Breaker Bracket	1 / 0
134	ATU-424	ATU-424	Decal, Sticker -- “WARNING”... (reset circuit breaker)	(As req'd.)
135	ATU-143	ATU-143	Decal, Sticker -- “SECURE LATCH”...	1
136	ATU-146	ATU-146	Decal, Sticker -- “STAND CLEAR – DO NOT RIDE”...	2
137	ATU-147	ATU-147	Decal, Sticker -- “3000 LB. MAXIMUM CAPACITY”	(As req'd.)
138	A-171433	A-171433	Decal, Sticker -- “4000 LB. MAXIMUM CAPACITY”	(As req'd.)
139	A-131003	A-131003	Decal, Sticker -- “SF SERIES”	1
140	A-131017	A-131017	Decal, Sticker -- “NOTE: DISENGAGE LATCH”...	1
141	A-131026	A-131026	Decal, Sticker -- “ZERO LEAK CONCEPT”	1
142	A-150601	A-150601	Decal, Sticker -- “MADE IN THE USA” (FLAG)	1
143	A-131001	A-131001	Decal, Wire Tag -- “10 AMP FUSE AND HOLDER”...	1
144	A-150095	(not used)	Wire Tie (plastic)	1 / 0
145	A-150472	A-150472	Cable Clamp, 1/2” – Control Cable Harness (rubber insulated)	1
146	A-133186	A-133186	Control, Raise/Lower – Low Voltage, (LVC), Power Down	Optional control
147	ATU-748	ATU-748	LVC Control Switch Guard	Optional control
148	A-140120	A-140120	Decal Kit, 3000 LB. Maximum Capacity (includes decals 106 thru 109, 134 thru 136, & 137, 139, 140, 141)	(As req'd.)
149	A-140121	A-140121	Decal Kit, 4000 LB. Maximum Capacity (includes decals 106 thru 109, 134 thru 136, & 138, 139, 140, 141)	(As req'd.)
150	ATU-200	ATU-200	Gusset – For Dock Bumper/Steps	2
151	A-140116	A-140116	Grommet, Rubber – For Control Switch Cord on Dock Bumpers	2
152	2029	2029	Flanged Nut, 1/4-20, Whiz-Lock™	2
153	718	718	Bolt, 1/4-20 NC x 1” Long	2
154	A-131034	A-131034	Decal, “Anthony Liftgates”	1
155			Sheet Metal Screw (for LVC control bracket)	4
156	A-150437	A-150437	Fuse Holder, In-Line	1



Anthony Liftgates, Inc.
1037 W. Howard Street • P.O. Box 615 • Pontiac, IL 61764-0615
Ph: 815.842.3383 • Fax: 815.844.3612 • Toll Free: 800.482.0003
www.anthonyliftgates.com

Form No. L-401 Parts 07/07

Revision 11/07