

ANTHONY
LIFTGATES, INC.®

DCT



PART BOOK

MODELS

DCT-25
DCT-25-WR

DCT-33
DCT-33-WR



Read, understand, and follow the manual. This manual provides information and procedures to safely operate and maintain the liftgate.



QUALITY, RELIABILITY, CUSTOMER SERVICE

MADE IN THE USA 

Contents

1. General Information Section	3	10. Lift Frame	24
1.1 Introduction	3	11. Platform Assemblies	26
1.2 Serial Number	3	12. Main Platform	28
1.3 Ordering Parts	4	13. Flipover Platform	30
1.4 Replacement Decals	4	14. Serviceable Hardware	31
2. Nomenclature	4	15. Fuse Assembly and Miscellaneous Accessories ..	32
2.1 Platform Nomenclature	4	16. Safety and Instructional Decals	33
2.2 Gravity-Down Power Unit Nomenclature	5	16.2 Decal Part Numbers	33
2.3 Power-Down Power Unit Nomenclature	5	16.1 General Information	33
3. Standard Floor Extension, Dock Bumpers, and		16.3 Decal / Installation Kits	36
Decals	6	16.4 Decal Only Kits	37
4. Dock Bumper Sets	8		
5. Walk Ramp Floor Extension	10		
6. Pump Box Assembly	12		
7. Hydraulic Power Pack	14		
8. Adapter Frame Mounting Assembly	18		
9. Hydraulic System	20		
9.1 Power Down Assembly	20		
9.2 Gravity Down Assembly	22		

1. General Information Section

1.1 Introduction

This parts book is designed to provide you with the necessary parts information to operate and maintain both the standard and walk ramp (-WR) versions of the Dual Cylinder Tuckunder (DCT) liftgate.

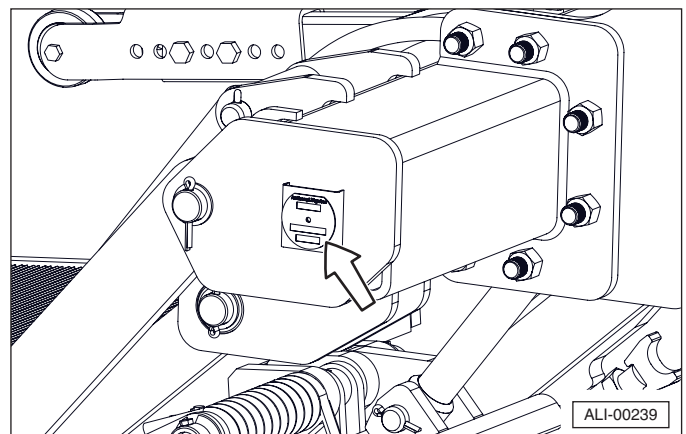
The part numbers in this book are used with the starting serial number 116751 and greater. The parts illustrated in the parts drawings are representative of typical parts used in the actual Tuckunder liftgate, and may not look exactly like the part(s) on your liftgate. Part numbers and drawings are subject to change without notice.

At the bottom of each page is the Anthony Liftgates Inc. Product Support phone number.

1.2 Serial Number

Before calling for warranty or other product information, have the serial number, model number, and lift capacity of your liftgate available. This information is stamped into the identification plate on the right end of the adapter frame and will help us verify your warranty information and your specific liftgate.

Record the serial number, model number, date of installation, and load capacity for easy reference when contacting Anthony Liftgates with questions.



Serial Number Identification Plate.

Serial Number Information	
Serial No.	
Model No.	
Date of Installation	
Lift Capacity	

1.3 Ordering Parts

Anthony Liftgates manufactures high-quality liftgates that require very little maintenance or repair. However, should a part break, become damaged, or need replacement due to normal part wear our knowledgeable staff can make sure you receive the part(s) to put your liftgate back into operation.

Note: The most current and up-to-date parts book can always be found on our website.

Our website address is **www.anthonyliftgates.com**
To find the most current version, choose Liftgates, Tuckunder, DCT, and Downloads.

Printed copies of the manual can be obtained by writing or calling our office.

For questions or to order parts, contact:

Anthony Liftgates, Inc.
1037 West Howard Street
Pontiac, Illinois 61764
(815) 842-3383

Web: www.anthonyliftgates.com

Email: Sales@anthonyliftgates.com

1.4 Replacement Decals

SAFETY INSTRUCTIONS



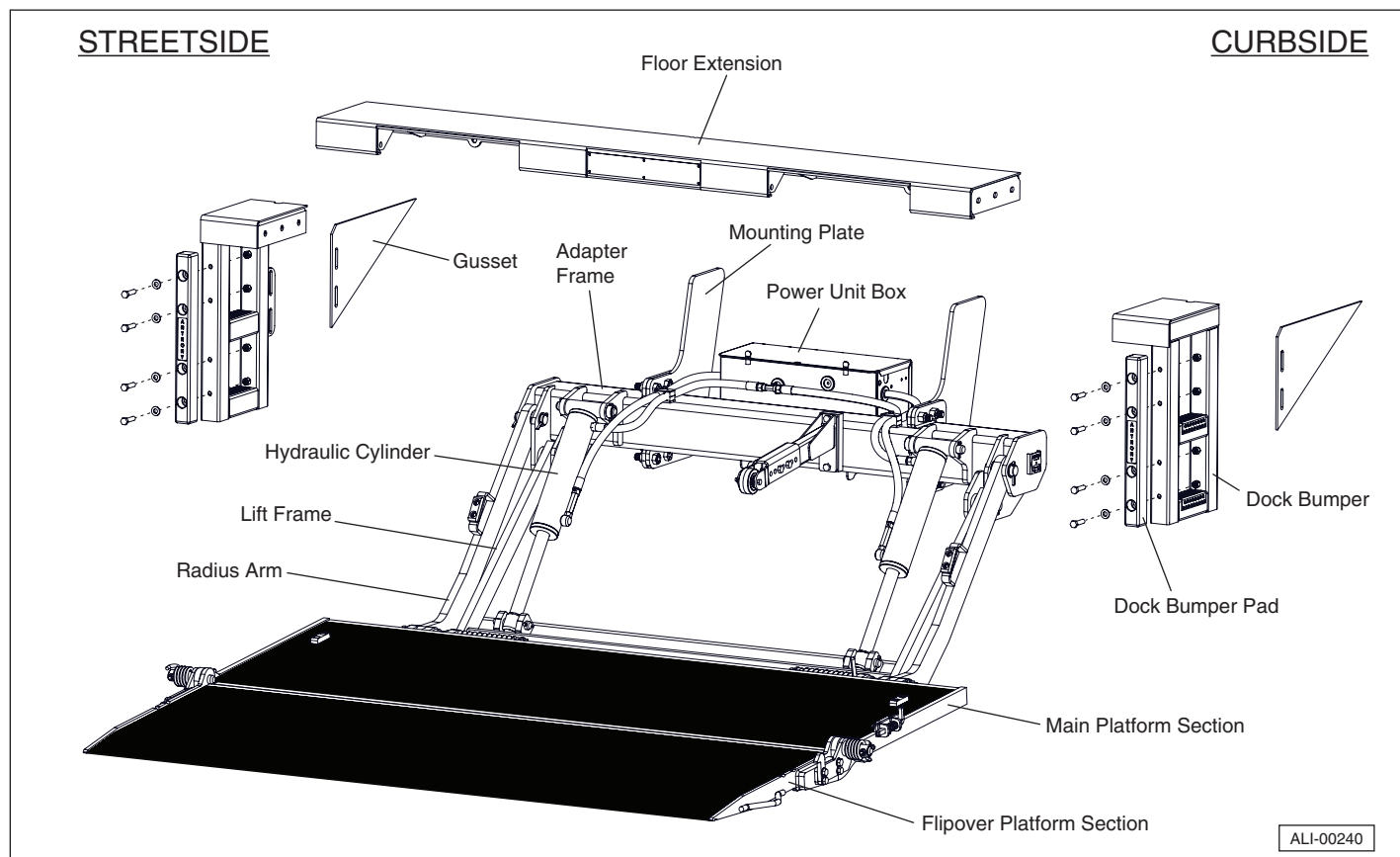
To prevent personal injury from not being aware of safety recommendations, make sure appropriate decals are attached to any liftgate replacement part that contained that decal initially.

To ensure the greatest level of safety, all decals must be attached to specified replacement parts and be legible at all times. Remember, it is the users' or maintenance personnel's responsibility to make sure these decals are attached to replacement parts.

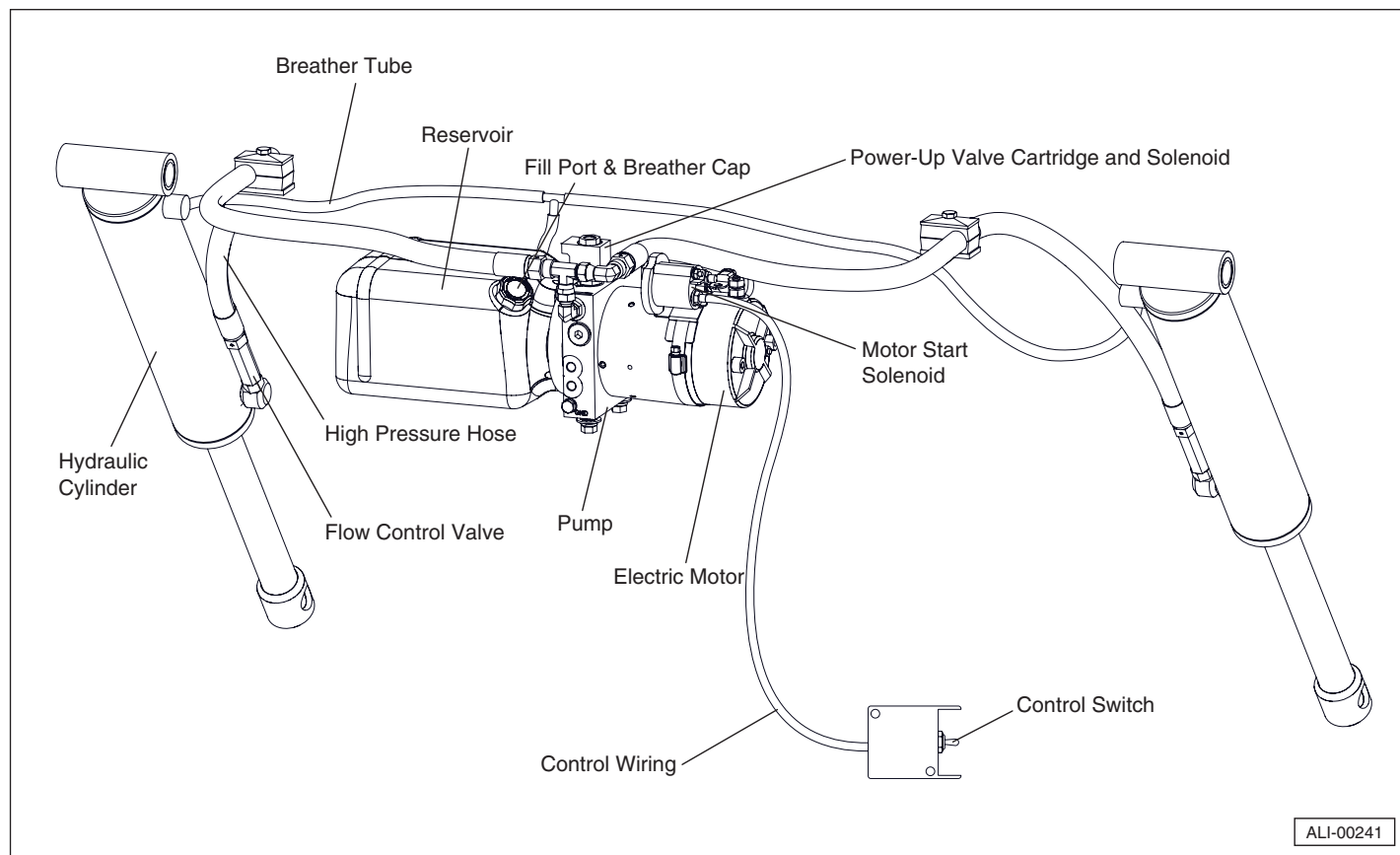
For decal placement refer to the DCT Tuckunder liftgate Operator Manual which can be found on our website **www.anthonyliftgates.com**. To find the most current version, choose Liftgates, Tuckunder, DCT, and Downloads.

2. Nomenclature

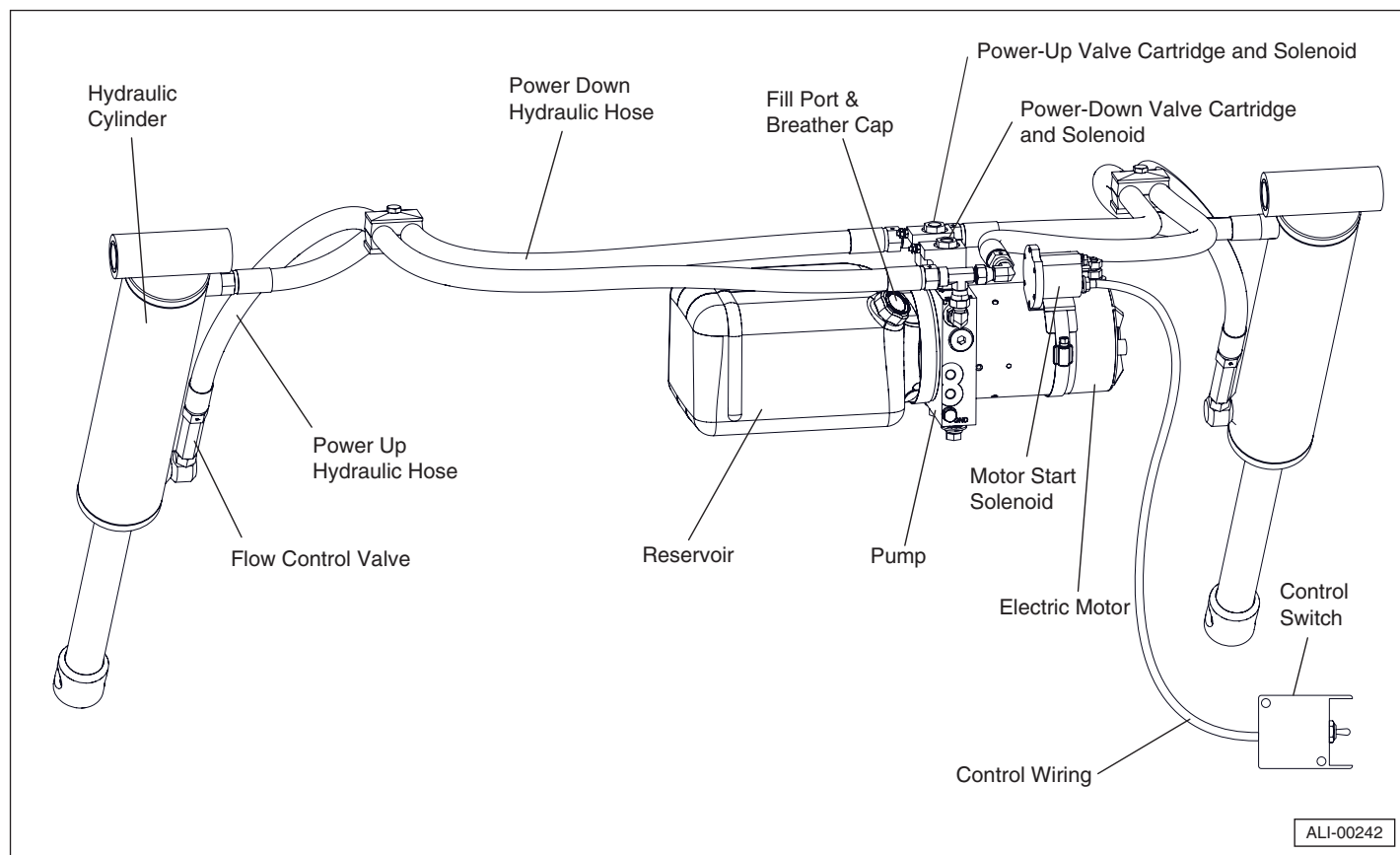
2.1 Platform Nomenclature.



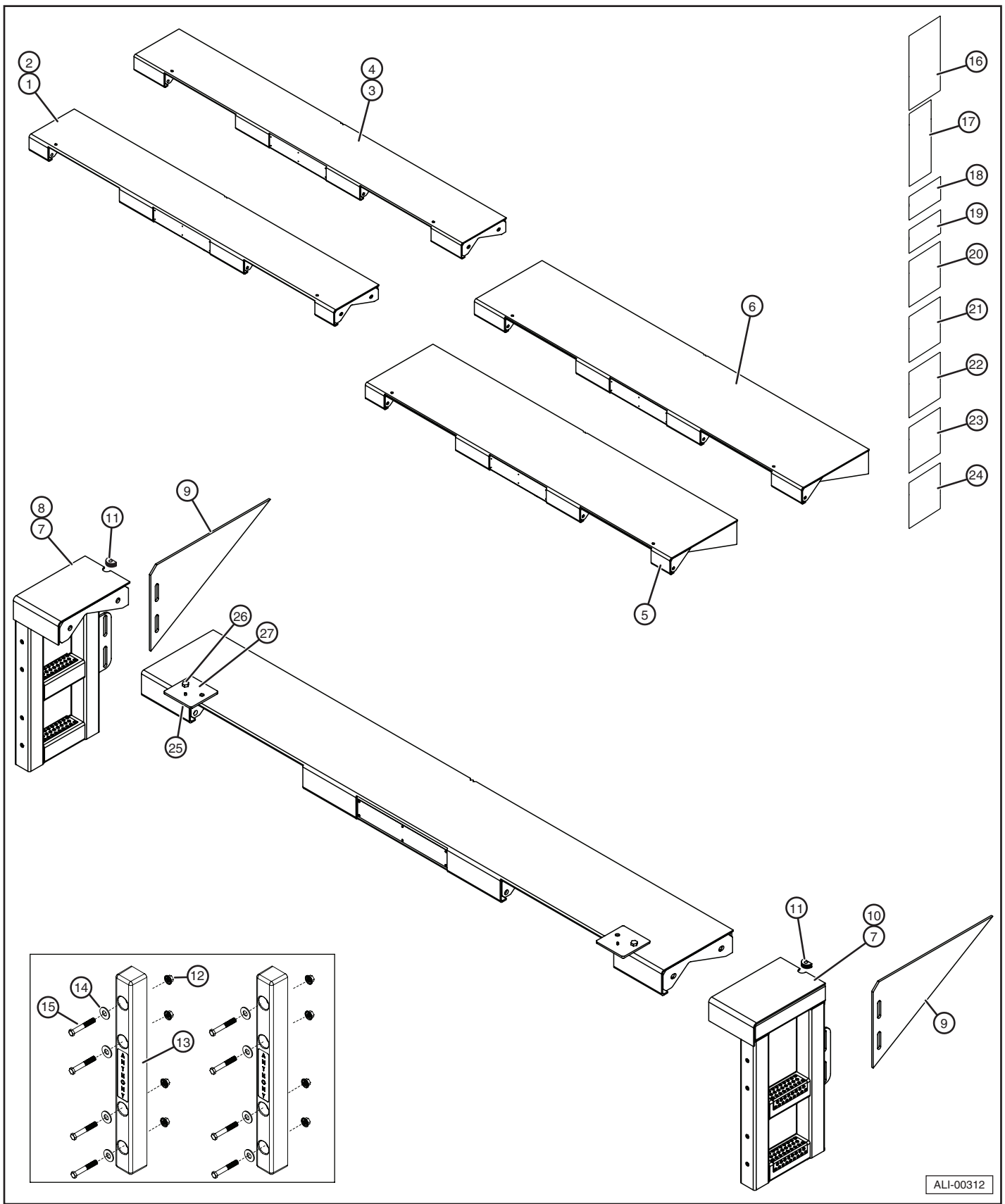
2.2 Gravity-Down Power Unit Nomenclature



2.3 Power-Down Power Unit Nomenclature



3. Standard Floor Extension, Dock Bumpers, and Decals

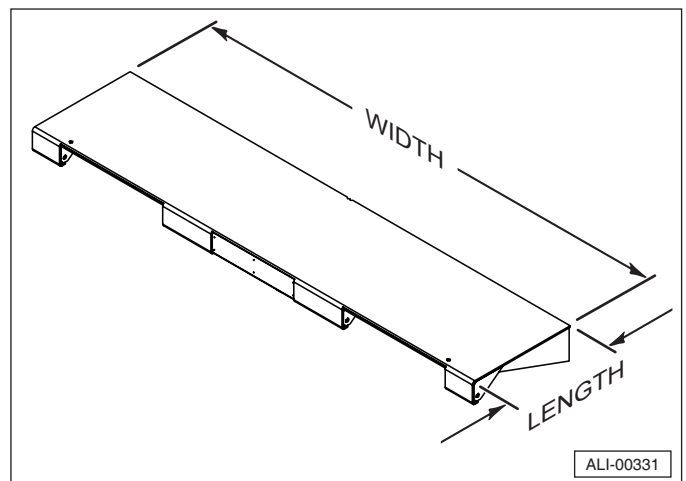


Item	Part Number	Description	Qty.
1	ATU-5130 *	WELDMENT, FLOOR EXTENSION, (1/4"- 96"x12")	1
2	ATU-5128 *	WELDMENT, FLOOR EXTENSION, (3/16"- 96"x12")	1
3	ATU-5142 *	WELDMENT, FLOOR EXTENSION, (3/16"- 102"x12")	1
4	ATU-5186	WELDMENT, FLOOR EXTENSION, (1/4"- 102"x12")	1
5	ATU-5288	WELDMENT, FLOOR EXTENSION, (1/4"- 96"x18")	1
6	ATU-5287 *	WELDMENT, FLOOR EXTENSION, (1/4"- 102"x18")	1
7	ATU-867 * or **	DOCK BUMPER SET WITH 20" PADS & GUSSETS (102" ONLY)	1
8	A-140063	WELDMENT, DOCK BUMPER, LEFT	1
9	ATU-200	GUSSET, DOCK BUMPER	2
10	A-140062	WELDMENT, DOCK BUMPER, RIGHT	1
11	A-140116	GROMMET, RUBBER	2
12	A-132301	1/2-13 NYLOCK GR8 NUT ZP	8
13	ATU-798	PAD, DOCK BUMPER, 20"	2
14	A-150065	1/2" FLAT WASHER, ZP	8
15	ATU-259	1/2-13 X 2.0 GR8 HEX BOLT ZP	8
16	A-131054	URGENT WARNING DECAL	1
17	A-131135	OPERATING INSTRUCTIONS DECAL	1
18	A-131057	WELD WARNING DECAL	1
19	A-131061 A-131136	2500 LBS. MAXIMUM CAPACITY DECAL 3300 LBS. MAXIMUM CAPACITY DECAL	1
20	A-131115	WARNING PERSONAL INJURY HAZARD DECAL	1
21	A-131056	DISENGAGE LATCH BEFORE USING LIFTGATE	1
22	A-131053	AFTER USING LIFTGATE, SECURE LATCH DECAL	1
23	A-131058	LIFTGATE FUSE CHANGING PROCEDURE	1
24	A-150601	FLAG — MADE IN THE USA	1
25	3139	1/2-13 HEX NUT GR8 ZP	2
26	A-132085	1/2-13 X 1.0 GR8 HEX BOLT	2
27	A-140959	INSTALL BRACKET W/M	2

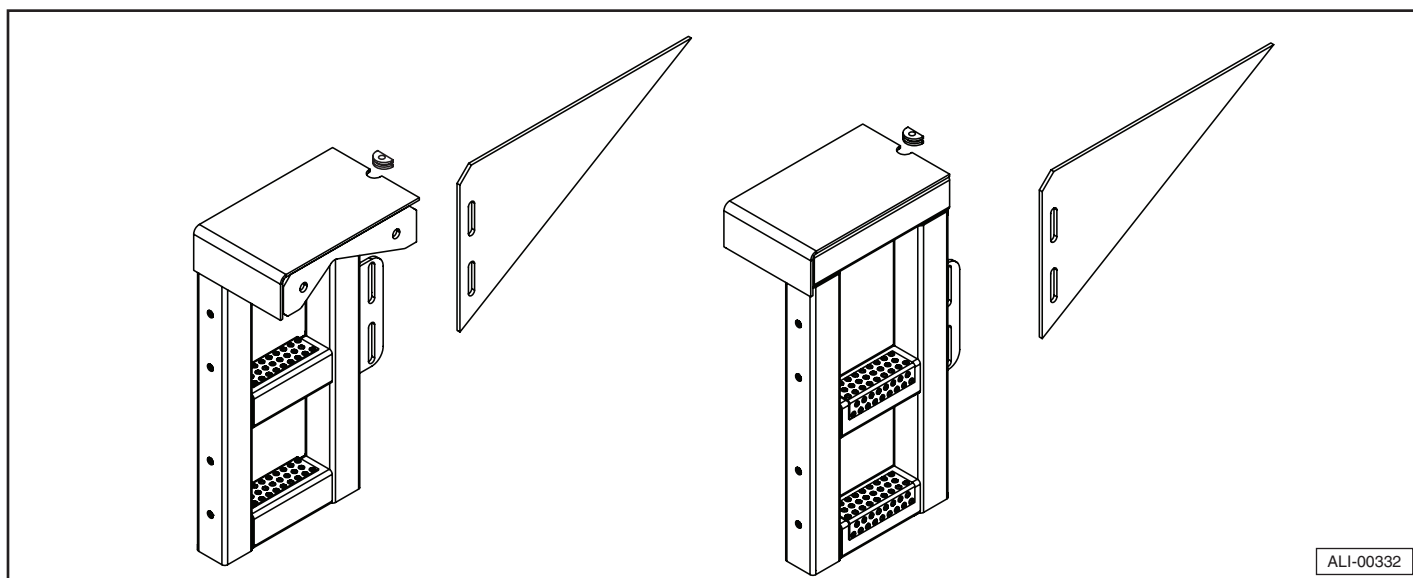
Notes: * The part numbers with a single * are also available in a galvanized finish. Add a (-G) at the end of the part number when ordering.

** These parts are also available in stainless steel. Add a (-SS) at the end of the part number when ordering.

Extension measurements are listed by length and then width (86" x 12"). Make sure the width of the extension matches the width of the dock bumpers. Whenever ordering replacement parts, compare the measurements of your liftgate extension with the measurements listed in the chart to determine the correct replacement part(s). If in doubt, contact the factory with model and serial number information to get the correct replacement part numbers.



4. Dock Bumper Sets



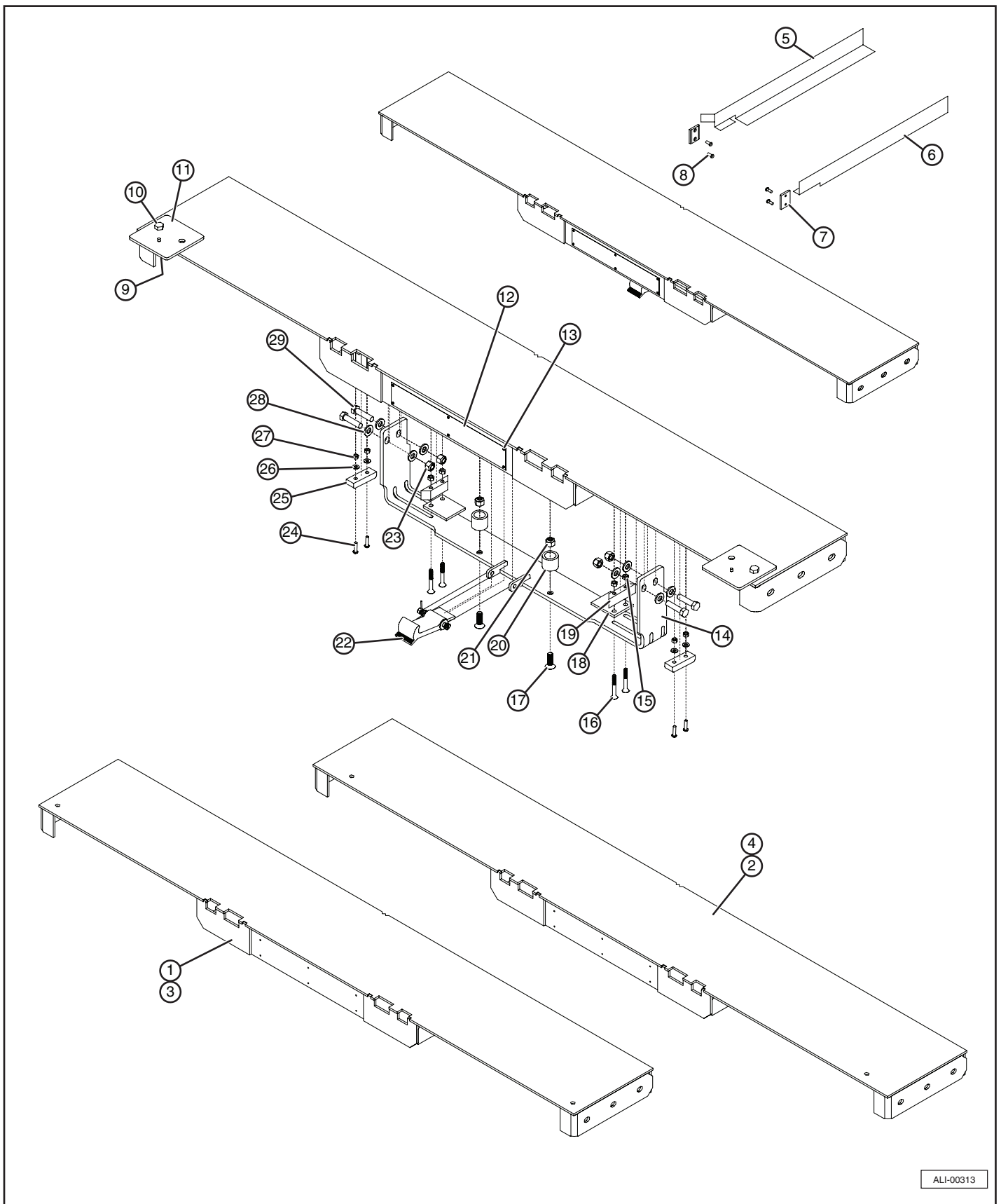
Part Number	Description	Qty.
A-140112 *	DOCK BUMPER SET WITH GUSSETS, NO PADS (102" ONLY)	1
A-140430 *	DOCK BUMPER SET WITH PADS AND GUSSETS (102" ONLY) 16" DEEP	1
A-140452 *	DOCK BUMPER SET WITH PADS AND GUSSETS (96" ONLY) WALKRAMP	1
A-140547 *	XD DOCK BUMPER SET WITH FLEXI-STEP, UHMW PADS AND GUSSETS (96" ONLY)	1
A-140548 *	XD DOCK BUMPER SET WITH UHMW PADS AND GUSSETS (96" ONLY)	1
A-140555 *	XD DOCK BUMPER SET WITH FLEXI-STEP, UHMW PADS AND GUSSETS (102" ONLY)	1
A-140681 *	XD DOCK BUMPER SET WITH 20" PADS AND GUSSETS (102" ONLY)	1
A-140690 *	XD DOCK BUMPER SET WITH 20" PADS AND GUSSETS (102" ONLY) 18" DEEP	1
A-140721 *	DOCK BUMPER SET WITH 20" PADS AND GUSSETS (102" ONLY) 18" DEEP	1
A-140743 *	DOCK BUMPER SET WITH EXTENSION PRE-WELDED, WITH PADS AND GUSSETS	1
A-140762 *	DOCK BUMPER SET WITH FLEXI-STEP, 20" PADS AND GUSSETS (102" ONLY)	1
A-140772 *	DOCK BUMPER SET WITH PADS AND GUSSETS (96" ONLY)	1
A-140793	DOCK BUMPER SET WITH EXTENSION PRE-WELDED, WITH PADS AND GUSSETS	1
A-140897 *	DOCK BUMPER SET WITH UHMW PADS AND GUSSETS (102" ONLY)	1
A-140898 *	XD DOCK BUMPER SET WITH UHMW PADS AND GUSSETS (102" ONLY)	1
A-140899	DOCK BUMPER SET WITH LIGHTS, PADS, AND GUSSETS (102" ONLY)	1
A-140913 *	XD DOCK BUMPER SET WITH EXTENSION PRE-WELDED, WITH PAD AND GUSSETS	1
A-140920 *	DOCK BUMPER SET WITH PADS AND GUSSETS (96" ONLY)	1
A-140939 *	DOCK BUMPER 1-STEP WITH FLEXI-STEP SET WITH PADS AND GUSSETS (102" ONLY) 12" DEEP	1
A-140940 *	DOCK BUMPER 1-STEP WITH FLEXI-STEP SET WITH PADS AND GUSSETS (102" ONLY) 16" DEEP	1
A-140966	DOCK BUMPER SET FOR LIGHTS, PADS, AND GUSSETS (102" ONLY)	1
A-141012 *	DOCK BUMPER SET WITH PADS AND GUSSETS (102" ONLY) 22" DEEP, 3-STEPS	1
ATU-1470 *	DOCK BUMPER SET WITH FLEXI-STEP, 8" PADS AND GUSSETS (96" ONLY)	1
ATU-867 * or **	DOCK BUMPER SET WITH 20" PADS AND GUSSETS (102" ONLY)	1
SG-1086	DOCK BUMPER SET WITH 8" PADS - SONAR COMPATIBLE (102" ONLY)	1

Notes: * The part numbers with a single * are also available in a galvanized finish. Add a (-G) at the end of the part number when ordering.

** These parts are also available in stainless steel. Add a (-SS) at the end of the part number when ordering.

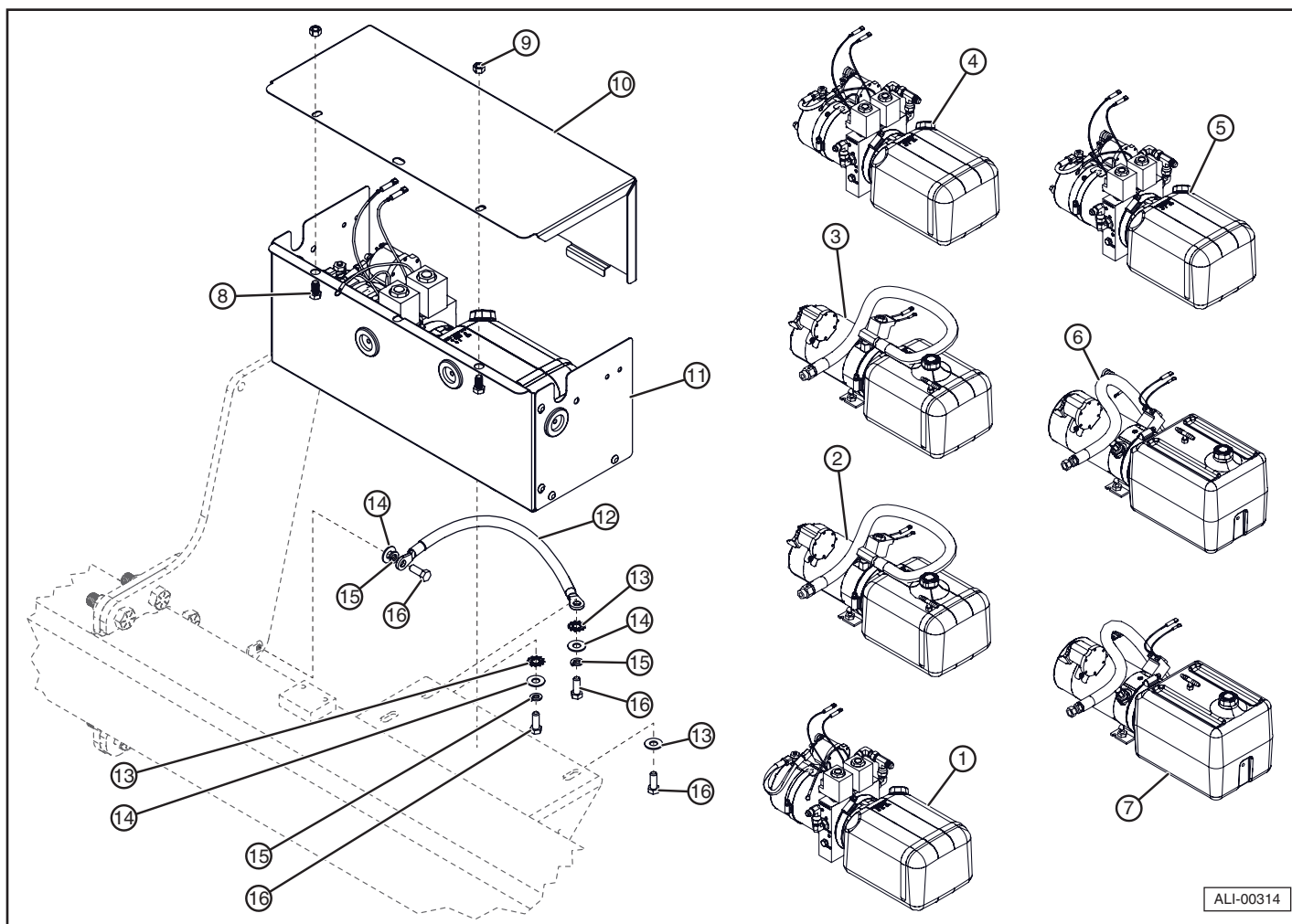
Notes

5. Walk Ramp Floor Extension



Item	Part Number	Description	Qty.
1	ATU-5260	WELDMENT, FLOOR EXTENSION, DCT-WR 96"	1
2	ATU-5261	WELDMENT, FLOOR EXTENSION, DCT-WR 102"	1
3	ATU-5260-G	WELDMENT, FLOOR EXTENSION, DCT-WR 96" GALVANIZED	1
4	ATU-5261-G	WELDMENT, FLOOR EXTENSION, DCT-WR 102" GALVANIZED	1
5	A-140442	WALKRAMP GUIDE - STREETSIDE	1
6	A-140441	WALKRAMP GUIDE - CURBSIDE	1
7	AR-18-229	PLASTIC SLIDE	2
8	A-132030	RIVET	4
9	3139	1/2-13 HEX NUT GR8 ZP	2
10	A-132085	1/2-13 X 1.0 GR8 HEX BOLT	2
11	A-140959	INSTALL BRACKET W/M	2
12	ATU-1506	ALUMINUM ANTHONY NAMEPLATE	1
13	A-132325	1/8" ALUM RIVET, .188-.250 GRIP	6
14	A-140464	WALKRAMP SUPPORT WELDMENT	1
15	862	5/16-18 LOCKNUT	4
16	A-132326	5/16-18 X 2.5" FH S/C/S ZP	4
17	A-132331	1/2-13 x 1.5" FH S/C/S ZP	2
18	A-140437	WALKRAMP GLIDE PAD	2
19	A-140466	RAMP GUIDE-PLASTIC	2
20	A-140463	WALKRAMP STOP BUSHING	2
21	A-132301	1/2-13 NYLOCK GR8 NUT ZP	2
22	A-140475	WR LATCH KIT	1
23	A-132024	1/2-13 LOCKNUT	4
24	S-047004	1/4-20 X 1" SLOTTED RDHD M/S ZP	4
25	A-140090	WEAR PAD/BUMPER	2
26	2051	1/4" F/W ZP	4
27	ATU-359	1/4-20 TOP L/N GR. C ZP	4
28	A-150065	1/2" SAE F/W 17/32" ID X 1-1/16" OD ZP	8
29	ATU-259	1/2-13 X 2" H/H C/S GR. 8 ZP	4

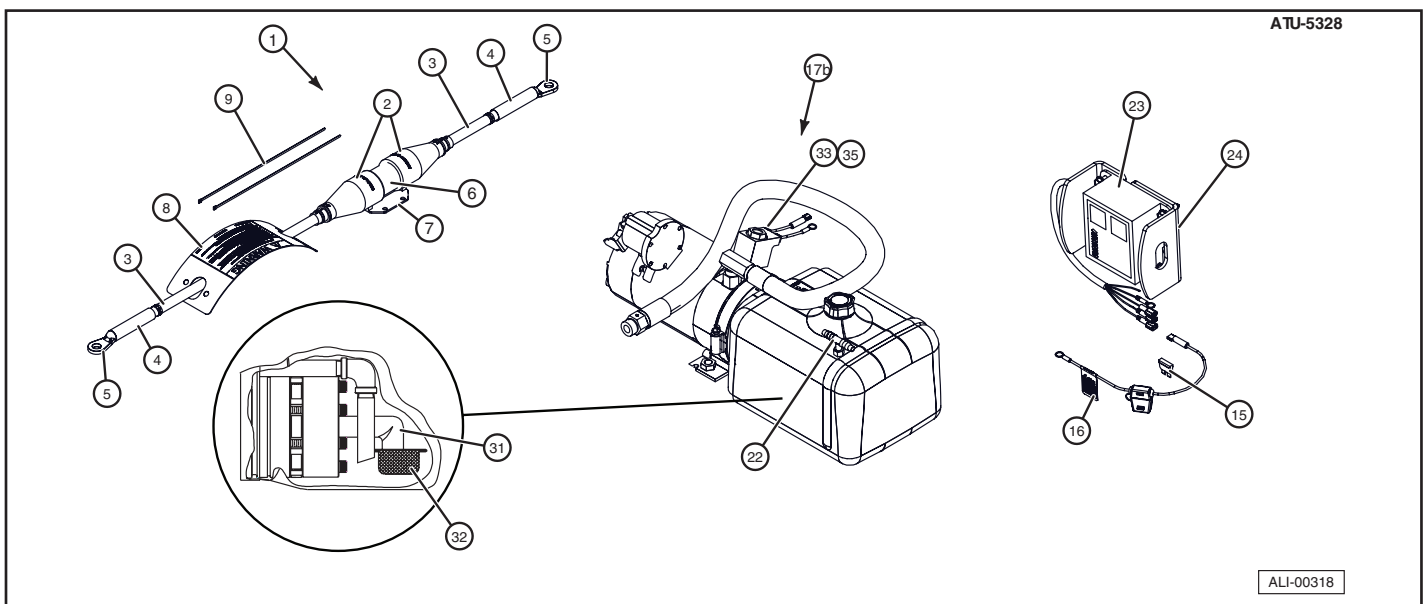
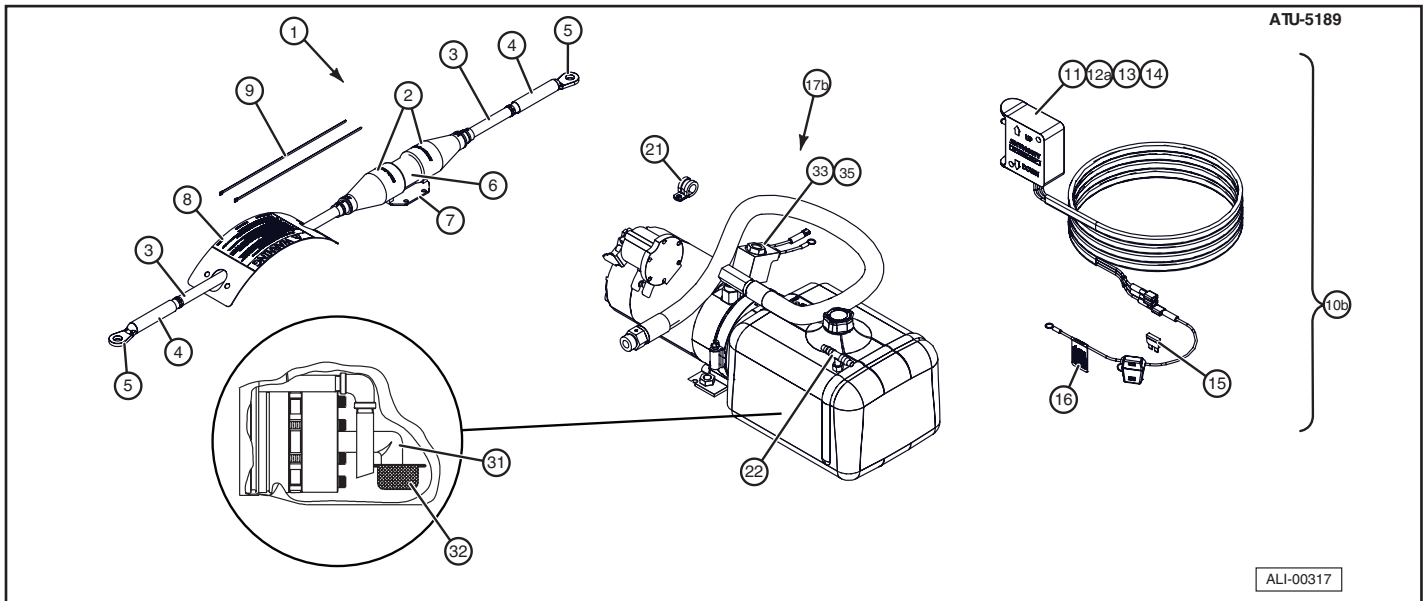
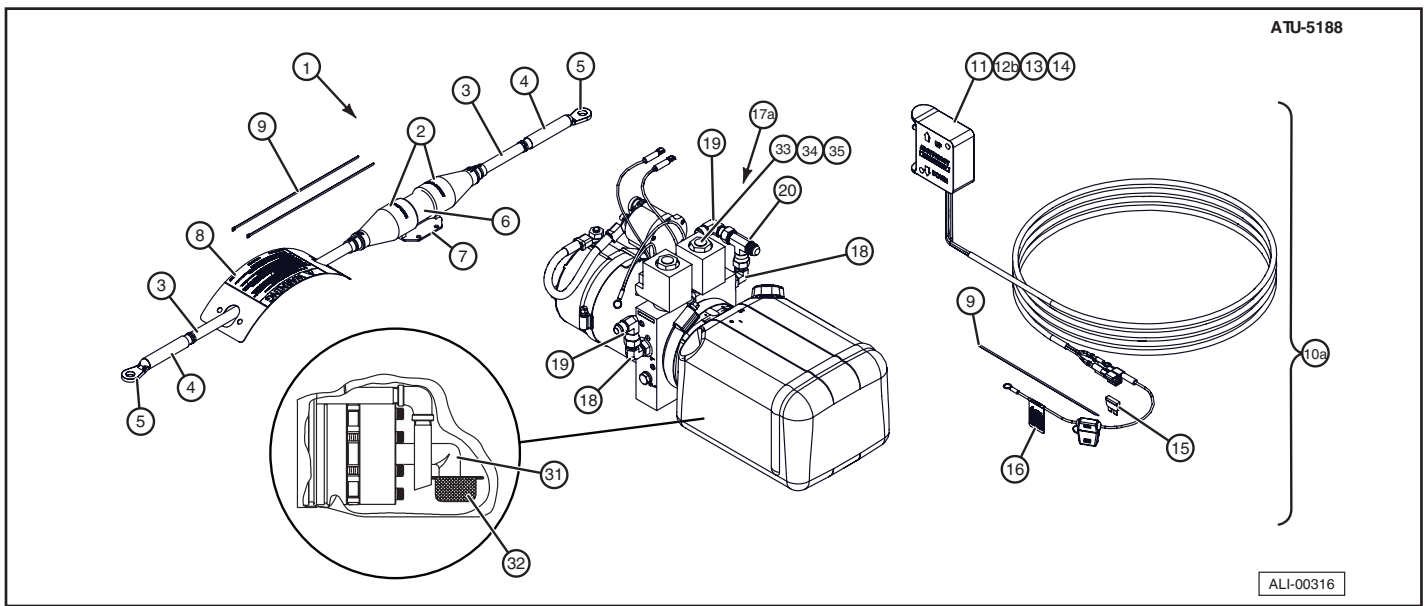
6. Pump Box Assembly



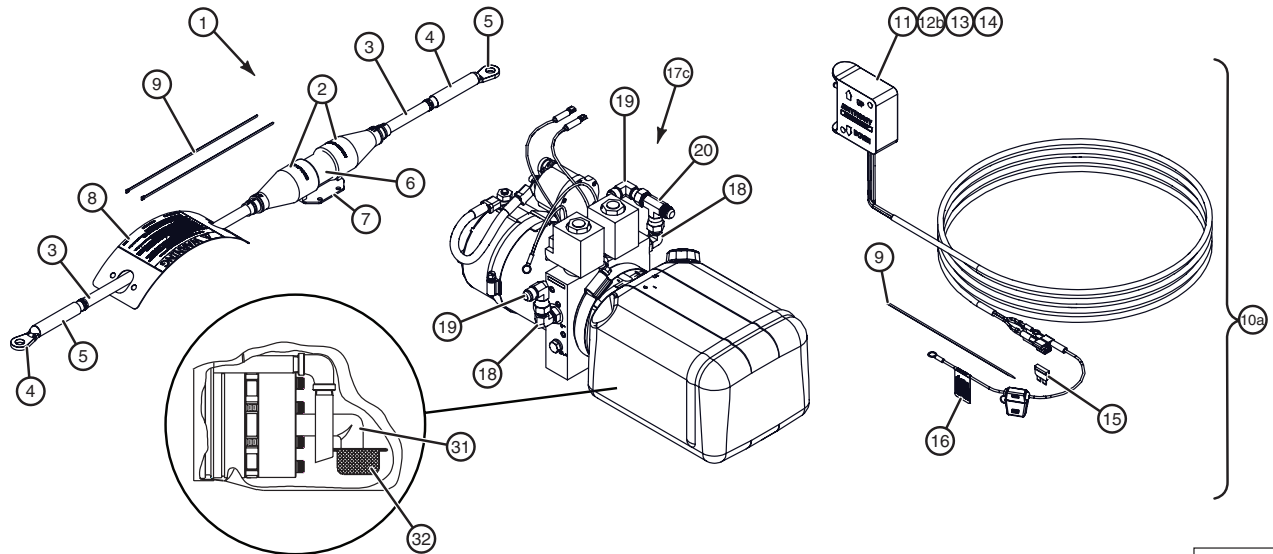
Item	Part Number	Description	Qty.
1	ATU-5188	POWER UNIT ASSY- DCT P/D 2500#	1
2	ATU-5189	POWER UNIT ASSY- DCT G/D 2500#	1
3	ATU-5328	POWER UNIT ASSY- DCT G/D 2500# W/ LVC	1
4	ATU-5204	POWER UNIT ASSY- DCT P/D 3300#	1
5	ATU-5285	POWER UNIT ASSY- DCT P/D 3300# HAND R/C	1
6	ATU-5203	POWER UNIT ASSY- DCT G/D 3300#	1
7	ATU-5245	POWER UNIT ASSY- DCT G/D 3300# HAND R/C	1
8	764	3/8-16 X 3/4" H/H C/S GR.8 YZP	2
9	2064	3/8-16 REVERSIBLE HEX L/N ZP	2
10	ATU-533	PUMP BOX COVER	1
11	ATU-531	PUMP BOX RIVETED ASSEMBLY	1
12	A-133516	DCT GROUNDING STRAP (not necessary if pump box is grounder to adapter frame)	1
13	A-132011	3/8" EXT HD STAR L/W ZP	2
14	2058	3/8 FLAT WASHER	4
15	2054	3/8 LOCK WASHER	3
16	874	3/8-16 X 1" H/H C/S GR.8 ZP	4

Notes

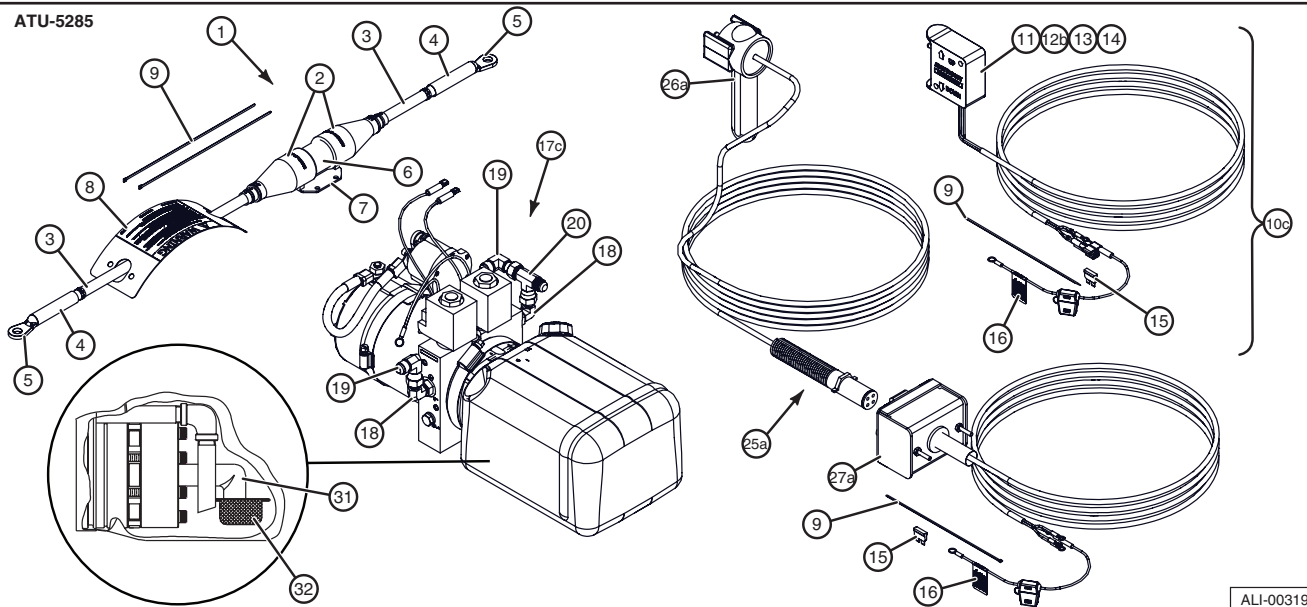
7. Hydraulic Power Pack



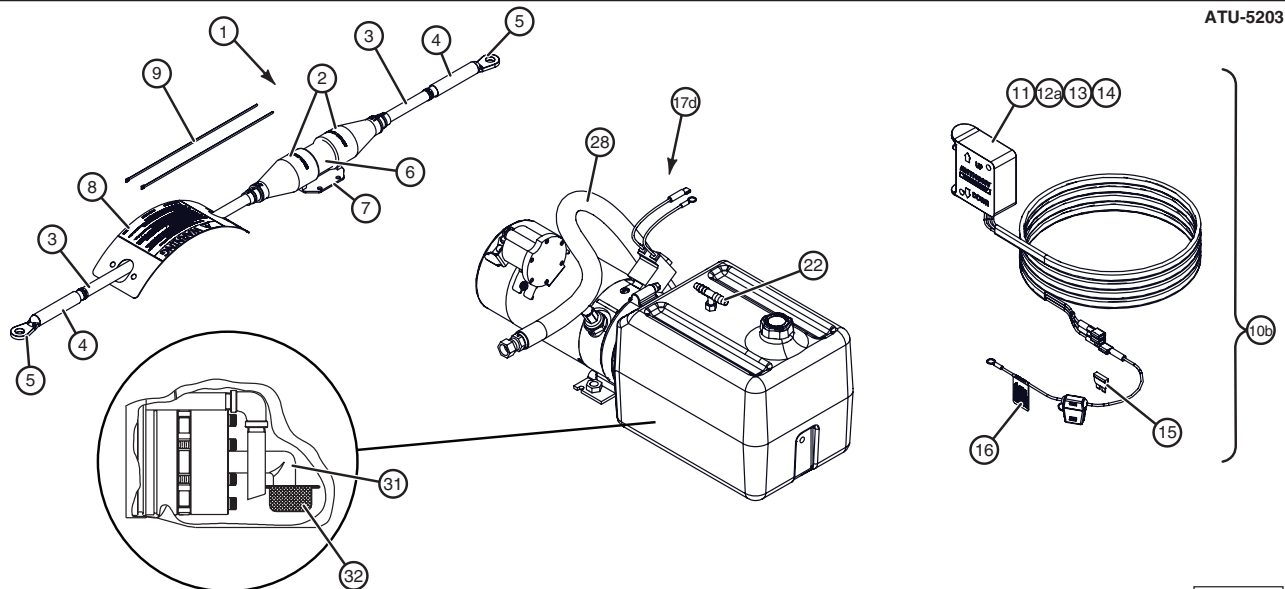
Item	Part Number	Description	Qty.
1	A-133105	POWER CABLE WITH 200A FUSE ASSY	1
2	A-133048	BOOT, WEATHER SEAL, RUBBER	2
3	A-150608	#2 RED POWER CABLE (30" AND 30' PIECES)	2
4	A-150990	HEAT SHRINK TUBING	2
5	A-133003	3/8" ANTI-ROTATIONAL LUG	2
6	A-133063	FUSE, 200A	1
7	A-133062	FUSE HOLDER, IN-LINE	1
8	A-131036	WIRE DECAL: FUSE REPLACEMENT INSTRUCTIONS	1
9	A-132079	CABLE TIE, 8"	2
10a 10b 10c	A-133553 A-133579 ATU-1219	SWITCH ASSY: POWER DOWN SWITCH ASSY W/CABLE, PLASTIC BOX (2.5 X 3 X 1)	1
11	ATU-1221	SWITCH: NEW STYLE PLASTIC BOX AND SWITCH, NO CABLE	1
12a 12b	ATU-307 A-150477	SWITCH ONLY: RAISE/LOWER TOGGLE (POTTED ASSY)	1
13	ATU-1215	PLASTIC SWITCH BOX	1
14	A-133068	RUBBER SWITCH COVER	1
15	A-150438	FUSE, 10A	1
16	A-131001	DECAL: 10A FUSE & HOLDER	1
17a 17b 17c 17d	A-130166 A-130116 A-130214 A-130394	POWER PACK UNIT (COMPLETE, 3000LB CAPACITY), POWER DOWN POWER PACK UNIT, COMPLETE, GRAVITY DOWN POWER PACK UNIT (COMPLETE, 4000-6000LB CAPACITY), POWER DOWN POWER PACK UNIT, COMPLETE, GRAVITY DOWN	1
18	A-130140	FITTING: 90DEG ADAPTER (MALE SAE#6 TO MALE JIC#6)	2
19	A-130142	FITTING: 90DEG ELBOW (MALE JIC#6 TO FEMALE JIC#6)	2
20	A-130153	TEE FITTING: 06MJ-06MJ-06FJ	1
21	A-150470	CABLE CLAMP	1
22	A-130036	TEE FITTING, 1/4" BARBED	1
23	A-133504	SWITCH — LOW VOLTAGE	1
24	ATU-786	MOUNTING BRACKET	1
25a 25b	A-133097 A-133581	REMOTE CONTROL KIT, COMPLETE	1
26a 26b	ATU-250 AR-18-172	REMOTE CONTROL HANDSET W/CABLE	1
27a 27b	ATU-407 A-133580	REMOTE CONTROL RECEPTACLE W/CABLE	1
28	A-130212	HYDRAULIC HOSE W/FITTINGS	1
29	A-133351	WIRE HARNESS	1
30	A-133350	WIRE HARNESS	1
31	A-150015	FILTER NIPPLE	1
32	A-150016	FILTER SCREEN	1
33	A-130433	DUAL LEAD COIL (130116,117,394,419 PU)	1
	A-130434	DUAL LEAD COIL 24V (130118 PU)	1
	A-130435	DUAL LEAD COIL (130166, 214 PU)	1
34	A-130436	LOWER VALVE 2W/2P (130116-118 243, 394 PU)	1
	A-130437	LOWER VALVE 2W/2P (130166,214 PU)	1
35	A-130438	RAISE VALVE 4W/2P (130117 PU)	1
	A-130439	RAISE VALVE 4W/2P (130166, 214 PU)	1



ALI-00316a

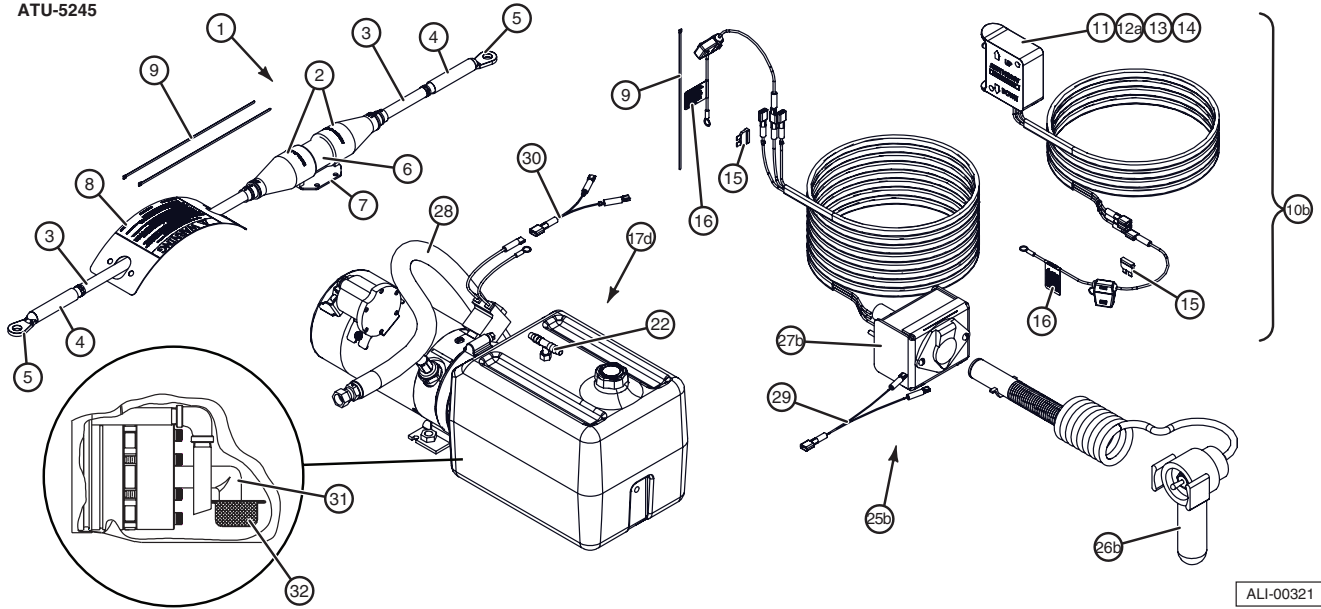


ALI-00319



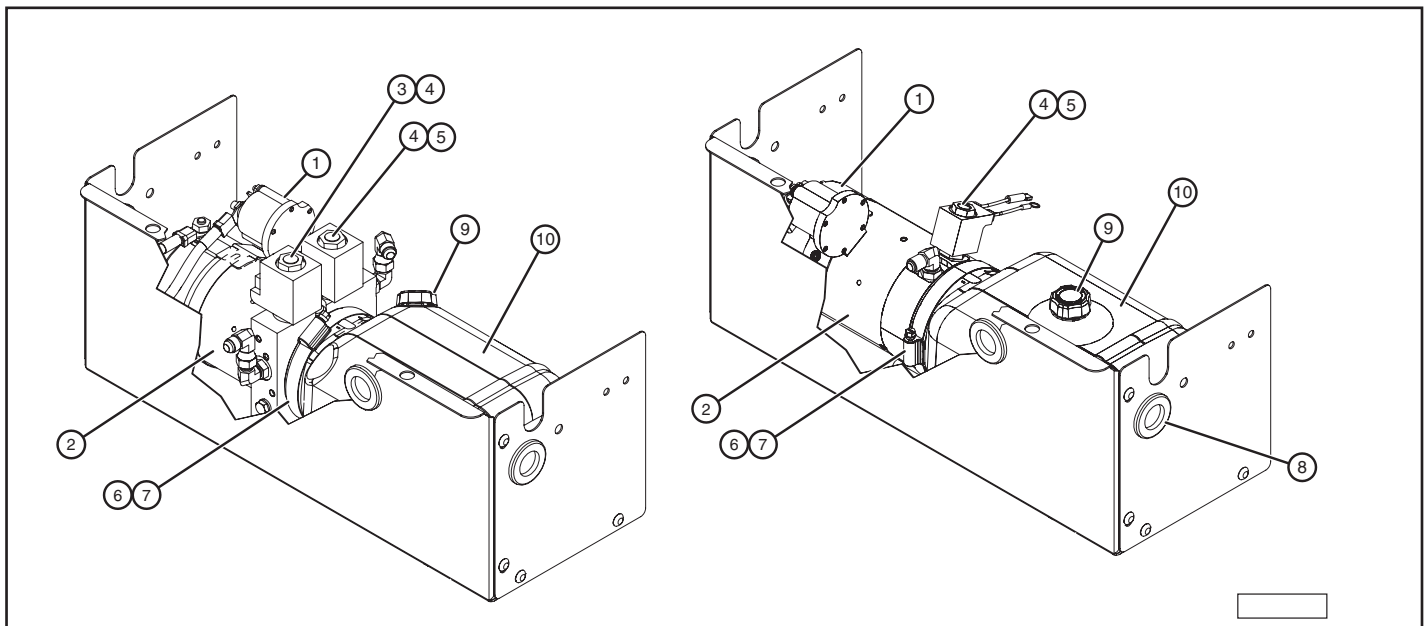
ALI-00320

ATU-5245

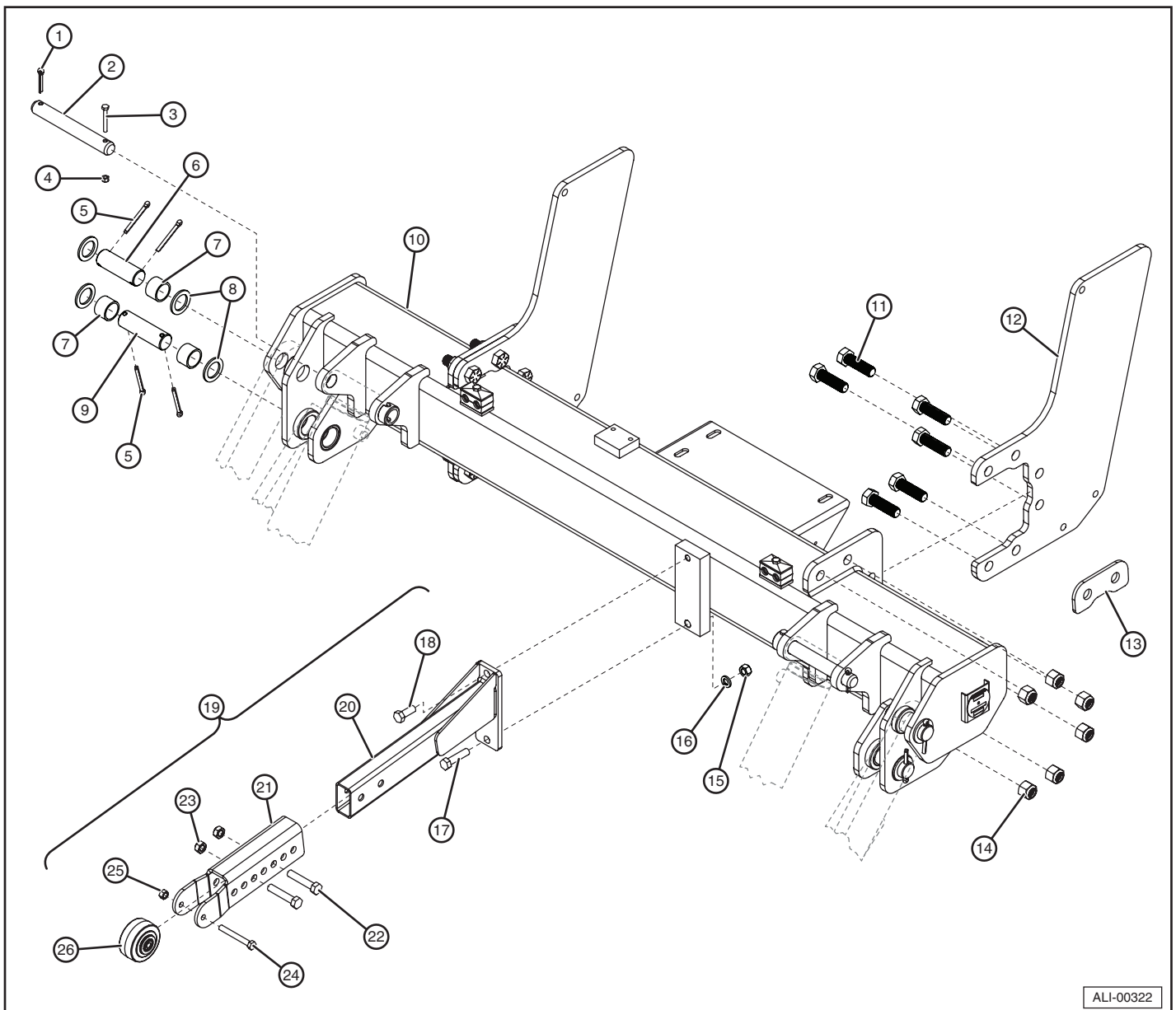


ALI-00321

Item	Part Number	Description	Qty.
1	ATU-120	SOLENOID RELAY, 12VDC MOTOR RUN	1
2	A-150018	MOTOR, 12VDC, NO THERMAL SWITCH	1
3	A-130216	VALVE/12VDC COIL/CARTRIDGE COMBINATION (LOWER, SINGLE O-RING, GREEN WIRE)	1
4	A-176315	COIL ONLY, 12VDC	2
5	A-130215	VALVE/12VDC COIL/CARTRIDGE COMBINATION (RAISE, TRIPLE O-RING, RED WIRE)	1
6	ATU-565	RESERVOIR ATTACHMENT CLAMP	1
7	A-150019	RESERVOIR ATTACHMENT O-RING	1
8	ATU-229	GROMMET FOR PUMP BOX	2
9	A-150546	FILLER/VENT CAP	1
10	A-150635	RESERVOIR (INCLUDES FILLER/VENT CAP)	1



8. Adapter Frame Mounting Assembly

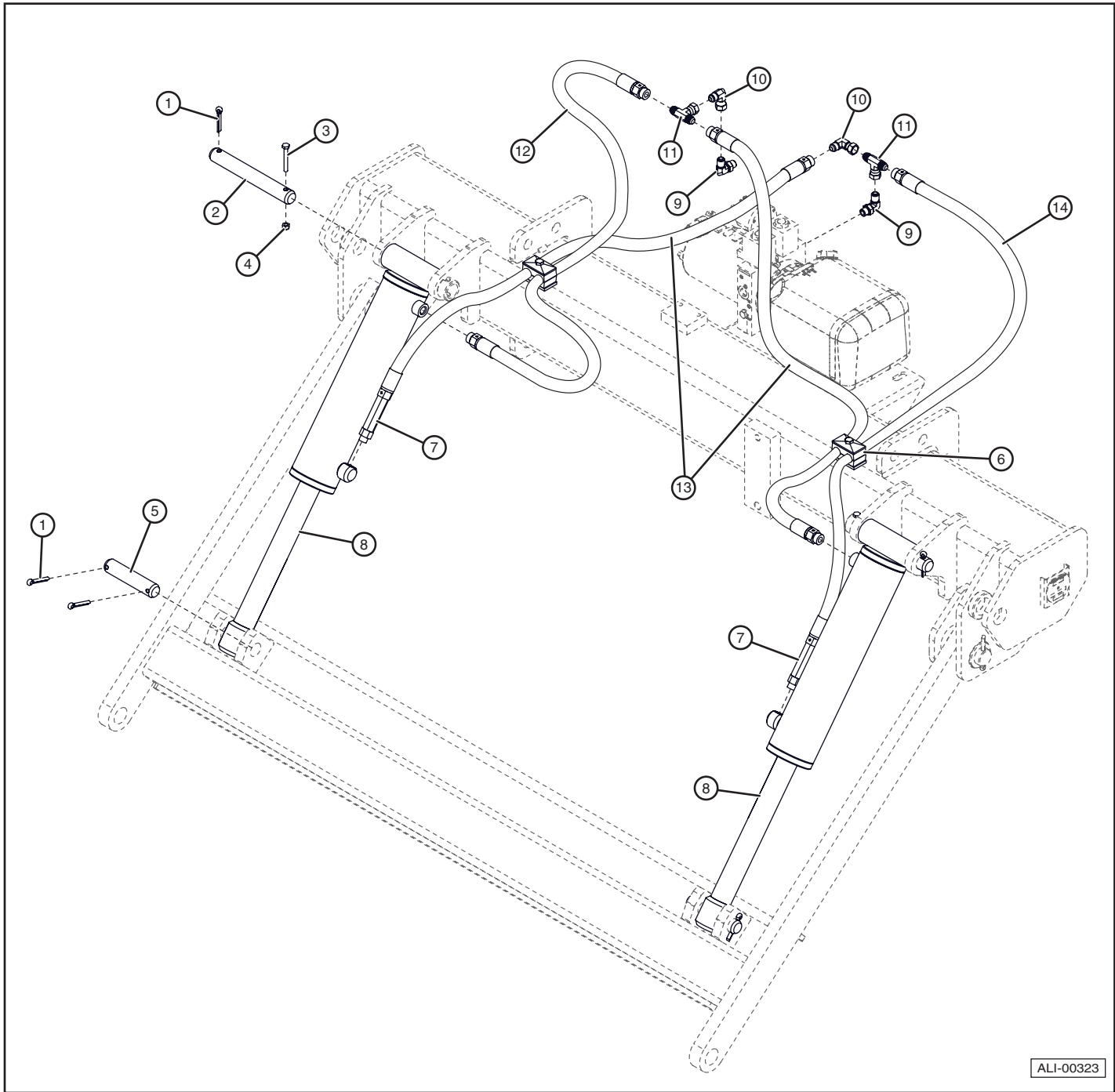


ALI-00322

Item	Part Number	Description	Qty.
1	A-132026	1/4" X 1-1/2" LG COTTER PIN, 18-8 SS	4
2	ATU-102	PIN, CYLINDER DEAD END MOUNT	2
3	ATU-358	1/4"-20 x 2.0" H/C/S ZP	2
4	ATU-359	1/4-20 TOP L/N GR. C ZP	2
5	A-132027	1/4" X 2-1/4" LG COTTER PIN, 18-8 SS	8
6	ATU-5010	PIN, RADIUS ARM TO ADAPTER	2
7	ATU-428	SERVICE FREE BUSHING 1.50 OD X 1.25 ID X 1.00	6
8	ATU-134	1-7/8" OD X 1-17/64" ID X 10 GA BUSHING	8
9	ATU-5011	PIN, LIFTFRAME TO ADAPTER	2
10	ATU-5001 ATU-5001-G ATU-5002 ATU-5002-G	ADAPTER FRAME WELDMENT: DCT ADAPTER FRAME WELDMENT: DCT, GALVANIZED ADAPTER FRAME WELDMENT W/ HITCH: DCT ADAPTER FRAME WELDMENT W/ HITCH: DCT, GALVANIZED	1
11	A-132340	3/4-10 X 2.5" HEX BOLT GR. 8	12
12	ATU-5202	BOLT-ON MOUNTING PLATE WELDMENT	2
13	ATU-5200	ADAPTER FRAME BOLT-ON SPACER	6
14	A-132323	3/4-10 NYLOCK NUT	12
15	3139	1/2-13 HEX NUT GR8 ZP	1
16	1691	1/2" LOCK WASHER	1
17	ATU-259	1/2-13 X 2" H/H C/S GR. 8 ZP	5
18	ATU-260	1/2-13 X 1.25 GR8 HEX BOLT	1
19	ATU-881 ATU-881-G	WHEEL ARM ASSY (ARM WELDMENT, CHANNEL, WHEEL) WHEEL ARM ASSY (ARM WELDMENT, CHANNEL, WHEEL), GALVANIZED	1
20	ATU-882 ATU-882-G	WHEEL ARM BASE WELDMENT WHEEL ARM BASE WELDMENT, GALVANIZED	1
21	ATU-886 ATU-886-G	WHEEL ARM CHANNEL WHEEL ARM CHANNEL, GALVANIZED	1
22	A-132112	1/2-13 X 2.50 GR8 HEX BOLT	2
23	A-132024	1/2-13 LOCKNUT	2
24	A-132039	3/8-24 X 3" GRADE 8 BOLT	1
25	2184	3/8-24 LOCKNUT	1
26	ATU-123	WHEEL ARM WHEEL (INCL. NUT AND BOLT; A-132039 & 2184)	1

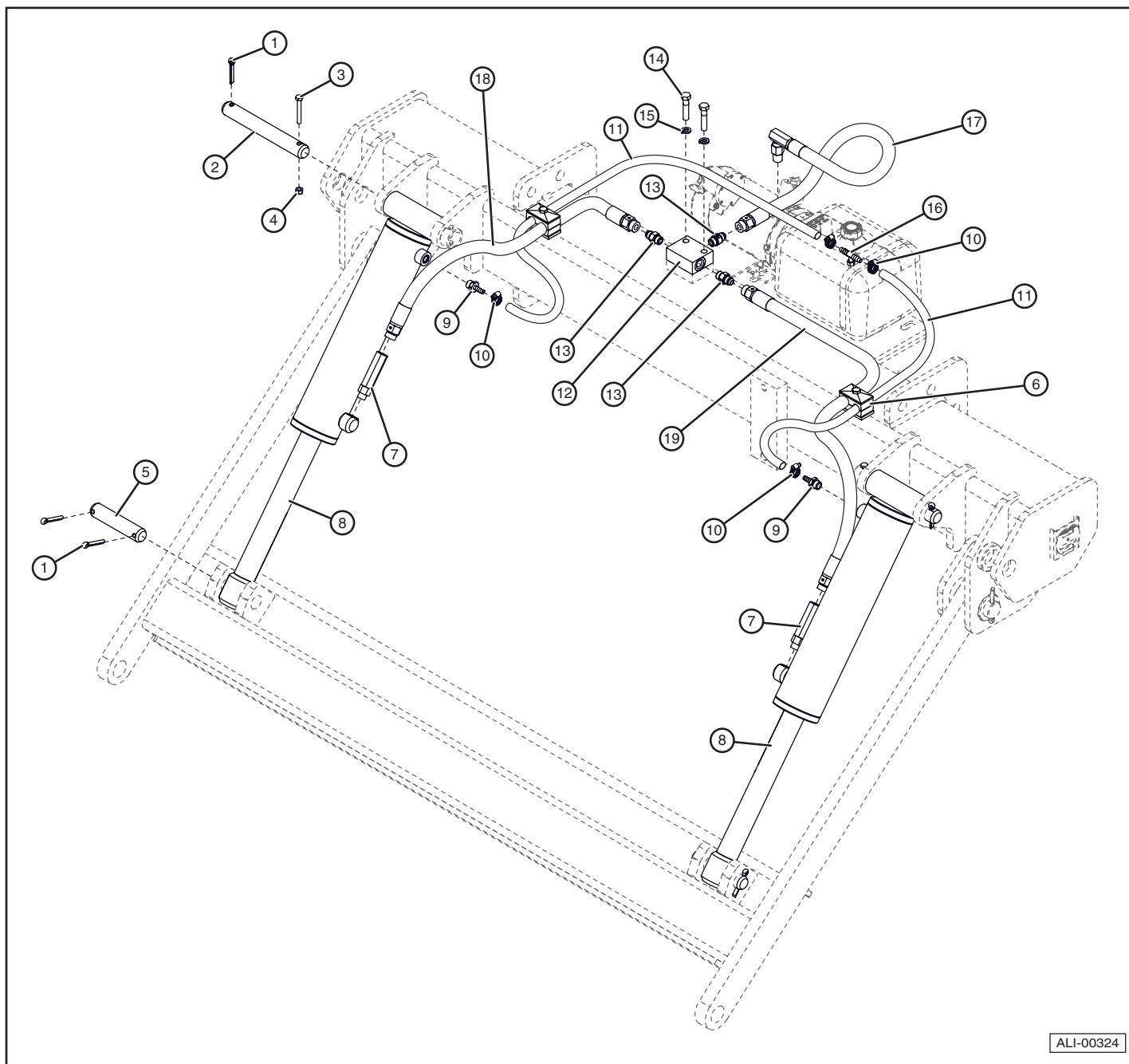
9. Hydraulic System

9.1 Power Down Assembly



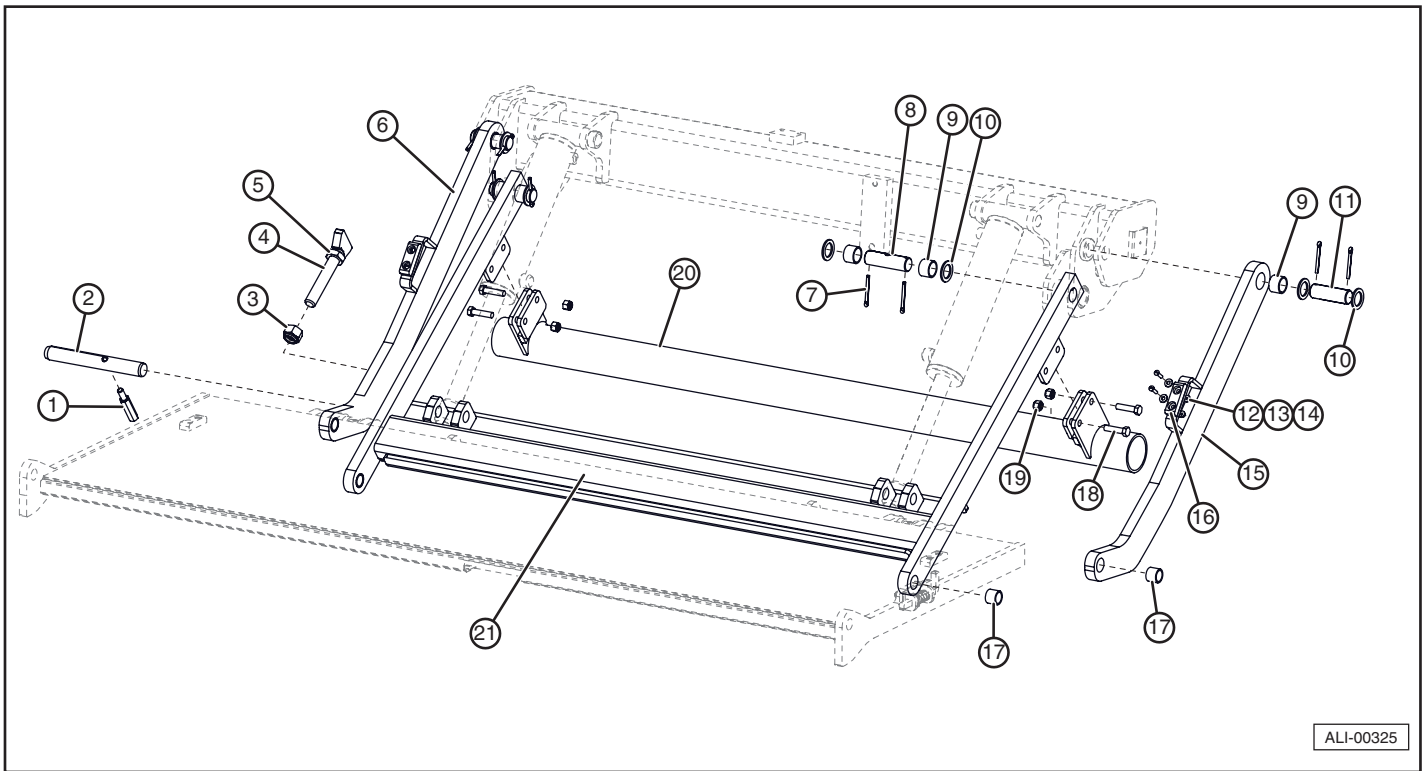
Item	Part Number	Description	Qty.
1	A-132026	1/4" X 1-1/2" LG COTTER PIN, 18-8 SS	6
2	ATU-102	PIN, CYLINDER DEAD END MOUNT	2
3	ATU-358	1/4"-20 x 2.0" H/C/S ZP	2
4	ATU-359	1/4-20 TOP L/N GR. C ZP	2
5	ATU-103	PIN, LIFTFRAME CYLINDER MOUNT	2
6	A-130392	CLAMP, HYDRAULIC HOSE	2
7	A-130100	RESTRICTOR VALVE 1.50 GPM SAE	2
8	A-130113 A-130114	CYLINDER 3" BORE X 10.75" STROKE, 2500# CYLINDER 4" BORE X 10.75" STROKE, 3300#	2
9	A-130140	FITTING: 90DEG ADAPTER (MALE SAE#6 TO MALE JIC#6)	2
10	A-130142	FITTING: 90DEG ELBOW (MALE JIC#6 TO FEMALE JIC#6)	2
11	A-130153	TEE FITTING: 06MJ-06MJ-06FJ	2
12	A-130131	HOSE - 30" LG., 3/8" ID	1
13	A-130123	HOSE - 36" LG., 3/8" ID	2
14	A-130122	HOSE - 44" LG., 3/8" ID	1

9.2 Gravity Down Assembly



Item	Part Number	Description	Qty.
1	A-132026	1/4" X 1-1/2" LG COTTER PIN, 18-8 SS	6
2	ATU-102	PIN, CYLINDER DEAD END MOUNT	2
3	ATU-358	1/4"-20 x 2.0" H/C/S ZP	2
4	ATU-359	1/4-20 TOP L/N GR. C ZP	2
5	ATU-103	PIN, LIFTFRAME CYLINDER MOUNT	2
6	A-130392	CLAMP, HYDRAULIC HOSE	2
7	A-130100	RESTRICTOR VALVE 1.50 GPM SAE	2
8	A-130113 A-130114	CYLINDER 3" BORE X 10.75" STROKE, 2500# CYLINDER 4" BORE X 10.75" STROKE, 3300#	2
9	A-130329	FITTING: HOSE BARB 06MORB TO 1/4 HOSE	2
10	A-170260	7/32-5/8 SS HOSE CLAMP	4
11	A-130071	CLEAR PLASTIC HOSE, PER INCH (1/4")	70
12	A-130030	TEE FITTING BLOCK	1
13	A-130198	FITTING: 06MORB-06FJ STRAIGHT	3
14	2019	3/8"-16 X 1-3/4" H/H C/S GR8 YZP	2
15	2054	3/8 LOCK WASHER	2
16	A-130036	TEE FITTING: HOSE BARB	1
17	A-130212	HYDRAULIC HOSE W/FITTINGS	1
18	A-130131	HOSE - 30" LG., 3/8 ID	1
19	A-130132	HOSE - 42" LG., 3/8 ID	1

10. Lift Frame

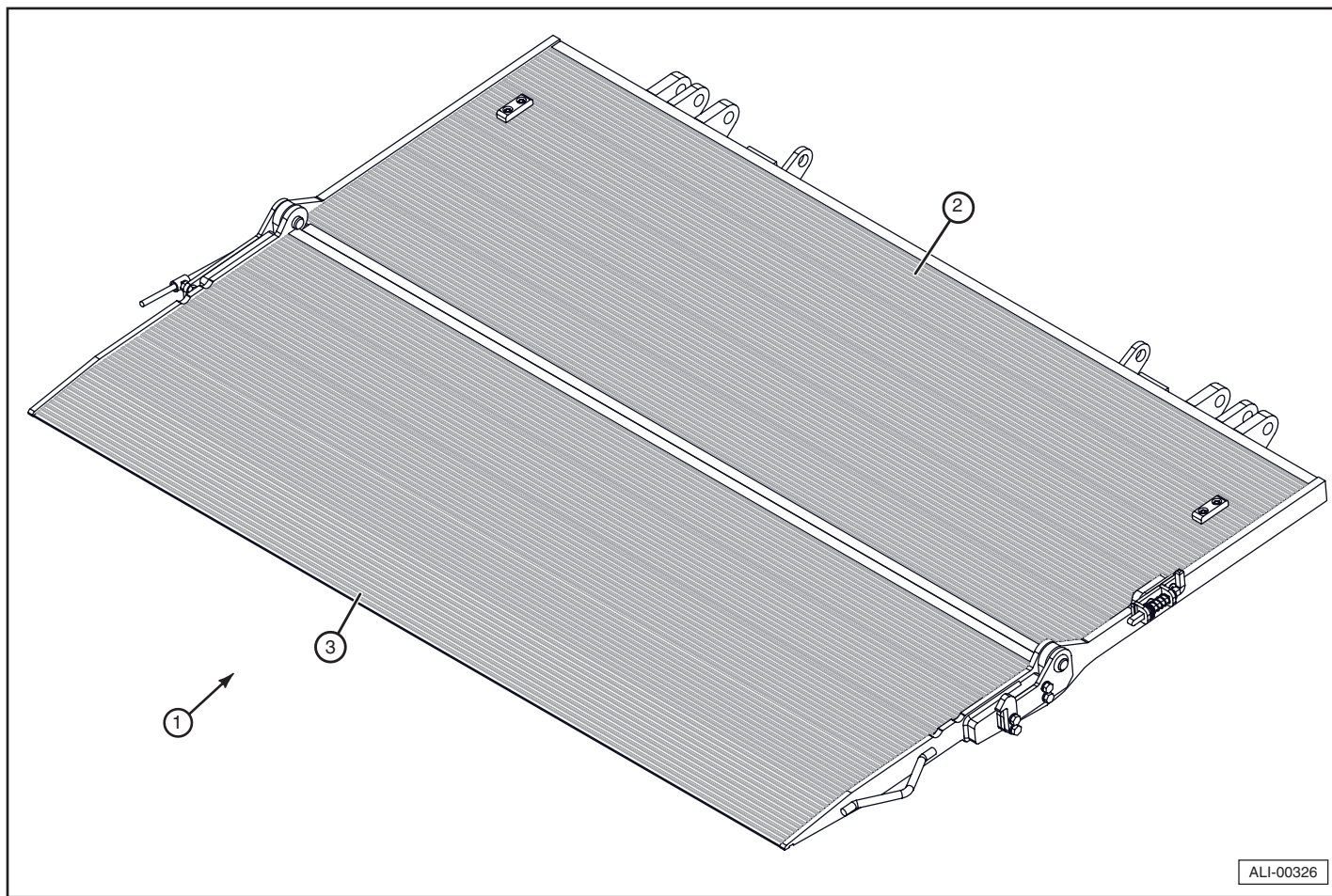
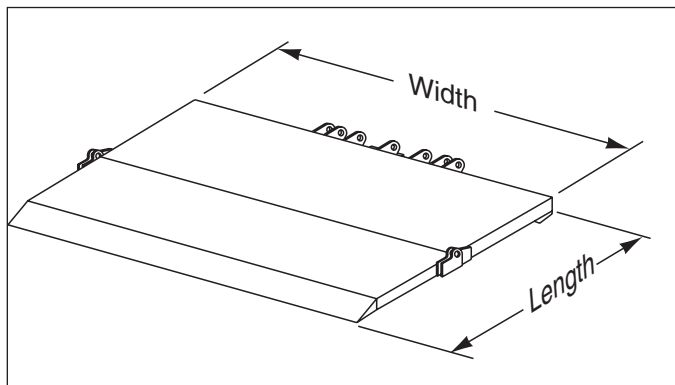


Item	Part Number	Description	Qty.
1	ATU-557	HANDLE - LATCH	1
2	ATU-556	PIN LOCK - LATCH	1
3	A-132342	1"-8 Gr.8 NYLOCK	1
4	ATU-5206	DCT ADJUSTMENT BOLT WELDMENT-GATE LATCH	1
5	A-132337	1"-8 JAM NUT	1
6	ATU-5025 ATU-5025-G	RADIUS ARM W/ BUSHINGS LH DCT w/ GATE LATCH RADIUS ARM W/ BUSHINGS LH DCT w/ GATE LATCH, GALVANIZED	1
7	A-132027	1/4" X 2-1/4" LG COTTER PIN, 18-8 SS	8
8	ATU-5011	PIN, LIFTFRAME TO ADAPTER	2
9	ATU-428	SERVICE FREE BUSHING 1.50 OD X 1.25 ID X 1.00	6
10	ATU-134	1-7/8" OD X 1-17/64" ID X 10 GA BUSHING	8
11	ATU-5010	PIN, RADIUS ARM TO ADAPTER	2
12	2029	1/4-20 FLANGED L/N ZP	4
13	2051	1/4" F/W ZP	4
14	S-047004	1/4-20 X 1" SLOTTED RDHD M/S ZP	4
15	ATU-5022 ATU-5022-G	RADIUS ARM W/ BUSHING RH DCT RADIUS ARM W/ BUSHING RH DCT, GALVANIZED	1
16	A-140090	WEAR PAD/BUMPER	2
17	ATU-426	SERVICE FREE BUSHING 1.25 OD X 1.00 ID X 1.00	4
18	ATU-259	1/2-13 X 2" H/H C/S GR. 8 ZP	4
19	A-132301	1/2-13 NYLOCK GR8 NUT ZP	4
20	ATU-5163	ICC BUMPER ATTACHMENT W/M DCT	1
21	ATU-5007 ATU-5007-G	DCT LIFTFRAME WELDMENT DCT LIFTFRAME WELDMENT, GALVANIZED	1

Notes

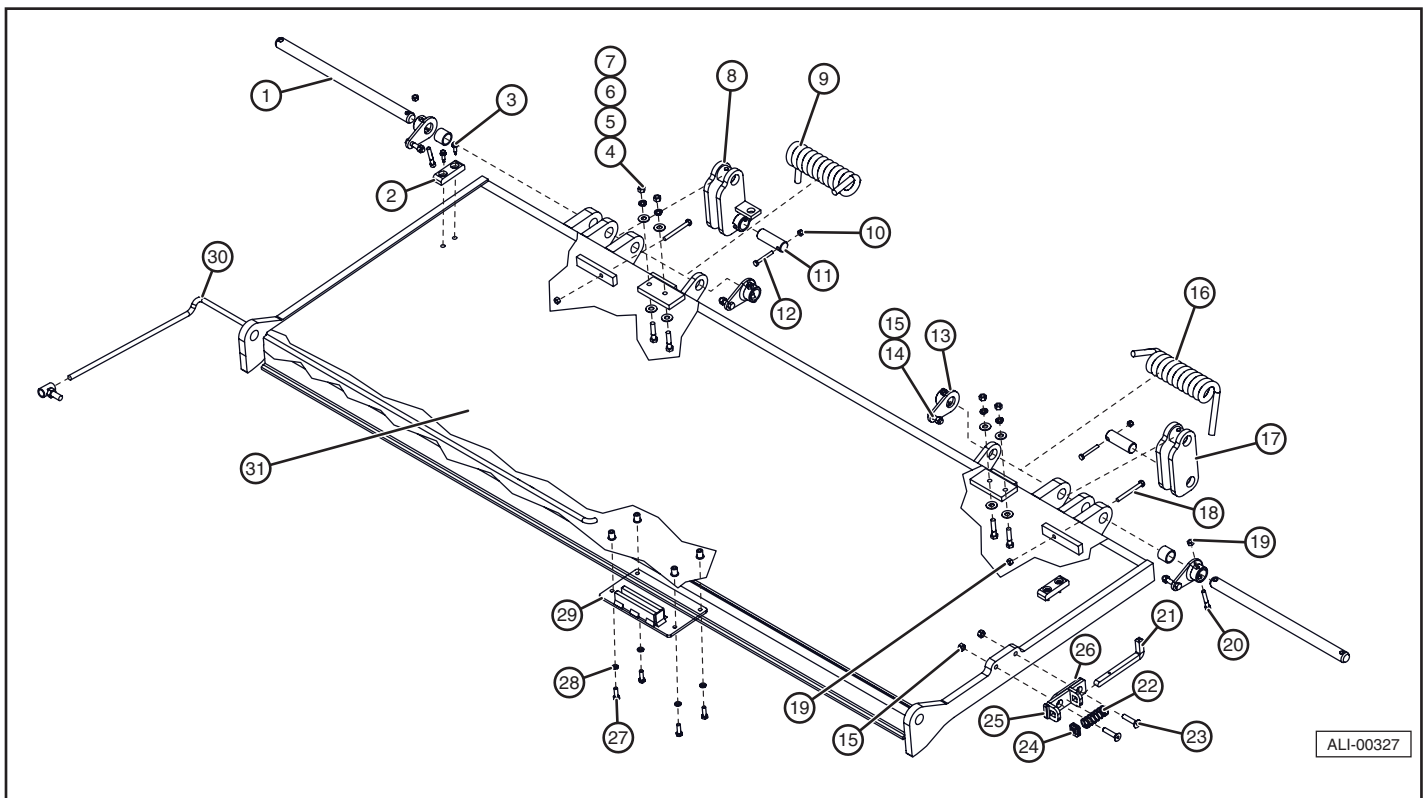
11. Platform Assemblies

Platform measurements are listed by length and then width (86" x 60") which represent the combined size of the liftgate platform (main platform plus flipover platform) and not the size of the individual parts. Whenever ordering replacement parts, compare the measurements of your liftgate with the measurements listed in the chart to determine the correct replacement part(s). If in doubt, contact the factory with model and serial number information to get the correct replacement part numbers.



Item	Part Number	Description	Qty.
1	ATU-5026	ALUMINUM PLATFORM ASSY- DCT 86"x 60" w/o CART STOPS	1
	ATU-5012	ALUMINUM PLATFORM ASSY- DCT 86"x 60" CART STOPS	
	ATU-5291	ALUMINUM PLATFORM ASSY- DCT 86"x 60" LOW PROFILE CART STOPS	
	ATU-5029	ALUMINUM PLATFORM ASSY- DCT 86"x 50" CART STOPS	
	ATU-5041	ALUMINUM PLATFORM ASSY - 86X50 LOW PROFILE, w/o CARTSTOPS	
	ATU-5064	STEEL PLATFORM ASSY- DCT 86"x50" w/o CART STOPS	
	ATU-5064-G	STEEL PLATFORM ASSY- DCT 86"x50" w/o CART STOPS, GALVANIZED	
2	ATU-5045	MAIN PLATFORM WELDMENT, STEEL 86"x60"	1
	ATU-5045-G	MAIN PLATFORM WELDMENT, STEEL, GALVANIZED 86"x60"	
	ATU-5148	MAIN PLATFORM WELDMENT, STEEL, 86"x50"	
	ATU-5148-G	MAIN PLATFORM WELDMENT, STEEL, GALVANIZED 86"x50"	
	ATU-5013	MAIN PLATFORM WELDMENT, ALUM 86"x60"	
	ATU-5030	MAIN PLATFORM WELDMENT, ALUM 86"x50"	
3	ATU-5056	FLIP PLATFORM WELDMENT - STEEL, NO CARTSTOPS 86"x60"	1
	ATU-5056-G	FLIP PLATFORM WELDMENT - STEEL, NO CARTSTOPS 86"x60", GALVANIZED	
	ATU-5226	FLIP PLATFORM WELDMENT - STEEL, W/ CARTSTOPS 86"x50"	
	ATU-5226-G	FLIP PLATFORM WELDMENT - STEEL, W/ CARTSTOPS 86"x50", GALVANIZED	
	ATU-5015	FLIP PLATFORM WELDMENT - ALUM, W/ CARTSTOPS 86"x60"	
	ATU-5028	FLIP PLATFORM WELDMENT - ALUM, NO CARTSTOPS 86"x60"	
	ATU-5032	FLIP PLATFORM WELDMENT - ALUM, W/ CARTSTOPS 86"x50"	
	ATU-5042	FLIP PLATFORM WELDMENT - ALUM, NO CARTSTOPS 86"x50"	

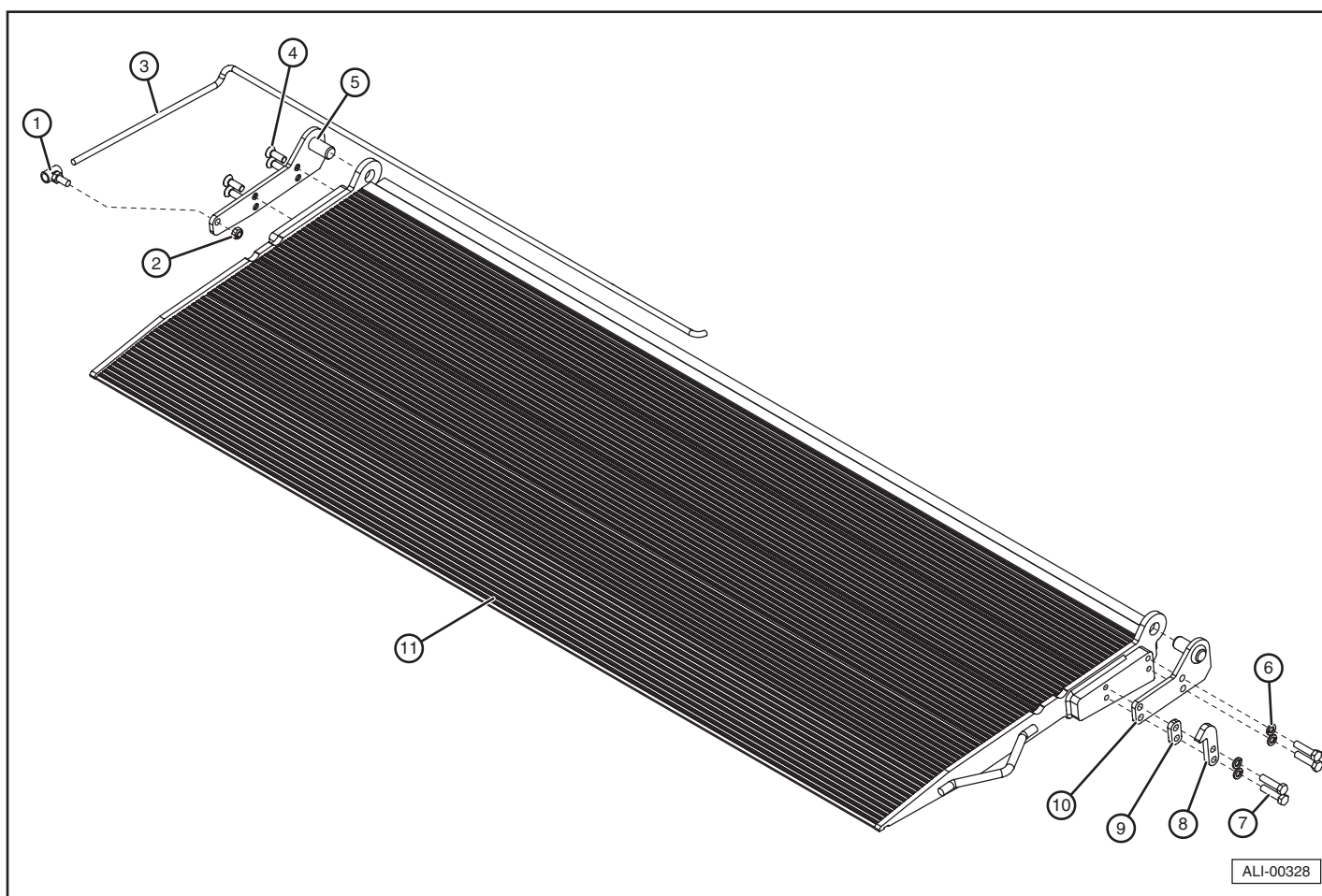
12. Main Platform



Item	Part Number	Description	Qty.
1	A-140881 A-140606	PLATFORM PIN: ALUM DCT W/ LOBE COLLARS PLATFORM PIN : STEEL DCT W/ LOBE COLLARS	2
2	A-140090	WEAR PAD/BUMPER	2
3	A-150159	SCREW, SELF DRILLING	4
4	2019	3/8"-16 X 1-3/4" H/H C/S GR8 YZP	4
5	2058	3/8 FLAT WASHER	4
6	2054	3/8 LOCK WASHER	4
7	P-162	3/8"-16 HEX NUT GR8 YZP	4
8	ATU-941 ATU-941-G ATU-5166 ATU-5166-G ATU-1349 ATU-1349-G	CAM PLATE ASSY. LH - (4 3/4") RAMP RIDE CAM PLATE ASSY. LH - (4 3/4") RAMP RIDE, GALVANIZED CAM PLATE W/M LH- 5" RAMP RIDE CAM PLATE W/M LH- 5" RAMP RIDE, GALVANIZED CAM - LEFT (SPECIAL) EXTREME RAMP RIDE CAM - LEFT (SPECIAL) EXTREME RAMP RIDE, GALVANIZED	1
9	ATU-518-L	PLATFORM SPRING - LH	1
10	ATU-359	1/4-20 TOP L/N GR. C ZP	2
11	ATU-1485	CAM PLATE PIN	2
12	ATU-358	1/4"-20 x 2.0" H/C/S ZP	2
13	A-140839	LOBE COLLAR WELDMENT	4
14	ATU-247	3/8-16 X 1-1/4" C/S GR.8 ZP	2
15	2064	3/8-16 REVERSIBLE HEX L/N ZP	6
16	ATU-518-R	PLATFORM SPRING - RH	1
17	ATU-940 ATU-940-G ATU-5168 ATU-5168-G ATU-1348 ATU-1348-G	CAM PLATE ASSY. RH - (4 3/4") RAMP RIDE CAM PLATE ASSY. RH - (4 3/4") RAMP RIDE, GALVANIZED CAM PLATE W/M RH- 5" RAMP RIDE CAM PLATE W/M RH- 5" RAMP RIDE, GALVANIZED CAM - RIGHT (SPECIAL) EXTREME RAMP RIDE CAM - RIGHT (SPECIAL) EXTREME RAMP RIDE, GALVANIZED	1
18	A-132266	5/16-18 X 3" GRADE 8 HEX BOLT	2

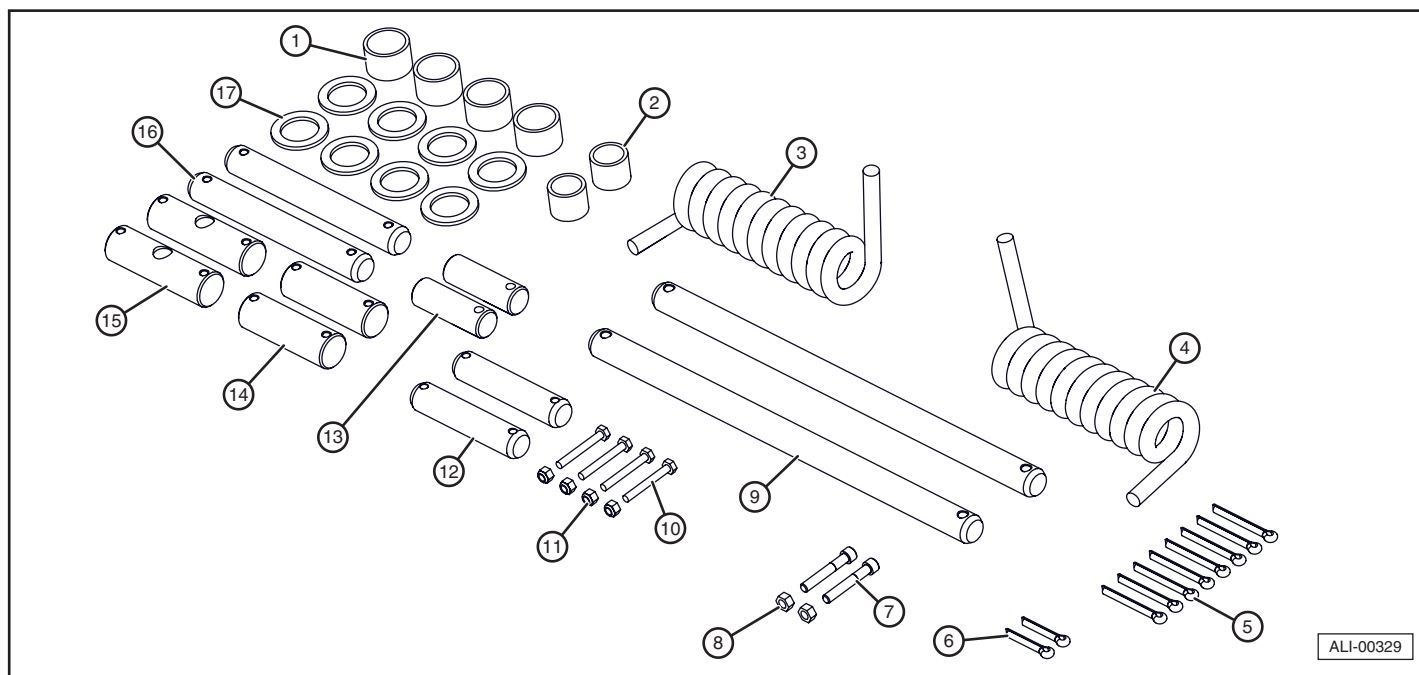
Item	Part Number	Description	Qty.
19	862	5/16-18 LOCKNUT	6
20	A-132148	5/16-18 X 2" S/H C/S, ALLOY, BLACK OXIDE	4
21	ATU-926	LATCH PIN	1
22	ATU-929	SPRING	1
23	A-132276	3/8-16 X 1.75" FLATHEAD BOLT	2
24	ATU-975	SQUARE WASHER	3
25	A-140292	LATCHPLATE WELDMENT	1
26	ATU-5250	LATCHPLATE SPACER	1
27	6608	5/16-18 X 1" GRADE 8 HEX BOLT	4
28	6611	5/16" LOCK WASHER	4
29	ATU-5271	COVER PLATE	1
30	ATU-5264	SPRING, PLATFORM ASSIST - FLIP TO MAIN	1
31	—	TYPICAL MAIN PLATFORM WELDMENT	1

13. Flipover Platform



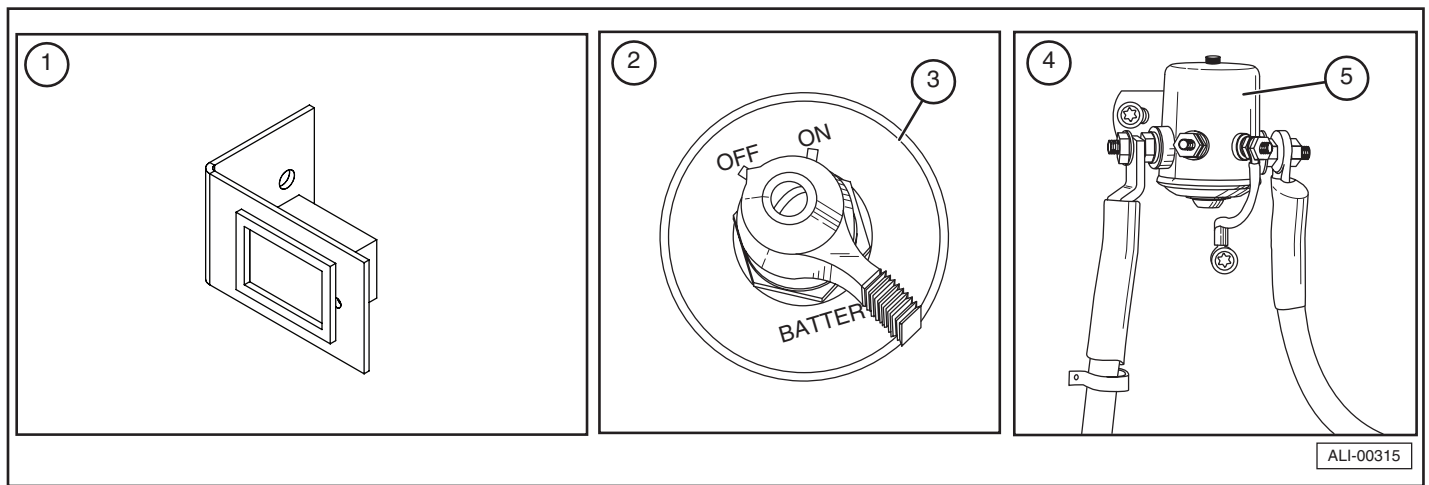
Item	Part Number	Description	Qty.
1	ATU-5237	SPRING HOLDER	1
2	A-132024	1/2-13 LOCKNUT	1
3	ATU-5264	SPRING, PLATFORM ASSIST - FLIP TO MAIN	1
4	A-132331	1/2-13 X 1-1/2 FLAT HEAD SCREW	4
5	ATU-5276	PLATFORM HINGE WELDMENT-STREETSIDE	1
6	1691	1/2" LOCK WASHER	4
7	ATU-259	1/2-13 X 2" H/H C/S GR. 8 ZP	4
8	A-140366	PLATFORM LATCH	1
9	ATU-5251	PLATFORM LATCH SPACER	1
10	ATU-5184	PLATFORM HINGE WELDMENT-CURBSIDE	1
11	—	TYPICAL FLIPOVER PLATFORM WELDMENT	1

14. Serviceable Hardware



Item	Part Number	Description	Qty.
1	ATU-428	SERVICE FREE BUSHING 1.50 OD X 1.25 ID X 1.00	4
2	ATU-426	SERVICE FREE BUSHING 1.25 OD X 1.00 ID X 1.00	2
3	ATU-518-L	PLATFORM SPRING - LH	1
4	ATU-518-R	PLATFORM SPRING - RH	1
5	A-132027	1/4" X 2-1/4" LG COTTER PIN, 18-8 SS	8
6	A-132026	1/4" X 1-1/2" LG COTTER PIN, 18-8 SS	6
7	A-132148	5/16-18 X 2" S/H C/S, ALLOY, BLACK OXIDE	4
8	862	5/16-18 LOCKNUT	4
9	A-140881 A-140606	PLATFORM PIN: ALUM DCT W/ LOBE COLLARS PLATFORM PIN : STEEL DCT W/ LOBE COLLARS	2
10	ATU-358	1/4"-20 x 2.0" H/C/S ZP	4
11	ATU-359	1/4-20 TOP L/N GR. C ZP	4
12	ATU-103	PIN, LIFTFRAME CYLINDER MOUNT	2
13	ATU-1485	CAM PLATE PIN	2
14	ATU-5010	PIN, RADIUS ARM TO ADAPTER	2
15	ATU-5011	PIN, LIFTFRAME TO ADAPTER	2
16	ATU-102	PIN, CYLINDER DEAD END MOUNT	2
17	ATU-134	1-7/8" OD X 1-17/64" ID X 10 GA BUSHING	8

15. Fuse Assembly and Miscellaneous Accessories



Item	Part Number	Description	Qty.
1	A-133354	CYCLE COUNTER KIT	1
2	A-133038	CUT-OFF SWITCH KIT - MANUALLY OPERATING	1
3	A-150031	SWITCH, CUT-OFF - MANUALLY OPERATING	1
4	A-133036	CUT-OFF SOLENOID KIT	1
5	A-150263	CUT-OFF SOLENOID	1

16. Safety and Instructional Decals

16.1 General Information

The illustrations shown in this section include both English and Spanish text for the decal. These combination decals can be ordered by placing a (-C) at the end of the part number. The typical liftgate is shipped with English only decals unless otherwise specified.

SAFETY INSTRUCTIONS



To prevent personal injury from not being aware of safety recommendations, make sure appropriate decals are attached to any liftgate replacement part that contained that decal initially.

To ensure the greatest level of safety, all decals must be attached to specified replacement parts and be must legible at all times. Remember, it is the users' or maintenance personnel's responsibility to make sure these decals are attached to replacement parts.

For decal placement refer to the DCT Tuckunder liftgate Operator Manual which can be found on our website www.anthonyliftgates.com. To find the most current version, choose Liftgates, Tuckunder, DCT, and Downloads.

16.2 Decal Part Numbers

Item	Part Number	Description	Qty.
On the Side of the Truck Body			
1	A-131115	DECAL: WARNING - PERSONAL INJURY	1
2	ATU-423	DECAL: OPERATING INSTRUCTIONS	1
3	A-150238	DECAL: NOTICE OVERLOAD PROTECTION	
4	ATU-141	DECAL: AFTER USING LIFTGATE	1
5	A-131061	DECAL: 2500LB MAXIMUM CAPACITY	1
	A-131136	DECAL: 3300LB MAXIMUM CAPACITY	
On the Liftframe, Adapter Tube, and Pump Box			
6	A-131017	DECAL: NOTE - DISENGAGE LATCH	1
7	A-131036	DECAL: LOGO	1
8	A-131133	DECAL: FLUID TYPE	1
9	A-150601	DECAL: MADE IN USA	1
10	A-131028	DECAL: WELD WARNING	1
11	A-131125	DECAL: GALVANIZED METAL HAZARD	
12	A-131001	DECAL: 10A FUSE & HOLDER	1
13	A-131036	WIRE DECAL: WARNING - FUSE REPLACEMENT INSTRUCTIONS	1

ANTHONY LIFTGATES, INC.	
⚠ WARNING	
PERSONAL INJURY HAZARD	
	<p>Operation may require user to stand on platform. To prevent injury or death of operators or bystanders:</p> <ul style="list-style-type: none"> • Read and follow operator/owner manual for safety, operation, inspection, and maintenance instructions. • Do not place unstable or unsafe loads on platform. • Do not allow loads to extend over edge of platform. • Do not exceed capacity or use liftgate for anything other than intended purpose. • Be aware of surroundings when operating liftgate. • Do not allow body parts to contact moving components. • Ensure footing is stable and stand away from edge before raising or lowering platform. • Owner/operators must properly maintain liftgate.
<small>A-131115</small>	

ANTHONY TUCKUNDER LIFTGATES OPERATING INSTRUCTIONS	
<p>1. Raise (twist) latch pin handle upwards and then slide pin sideways to release. Do not force the latch. Liftgate may need to be slightly raised or lowered to release pressure on latch pin.</p>	
<p>2. Press control switch DOWN until folded platform rests on ground. Always stand on curbside of truck when raising or lowering platform with control switch.</p>	
<p>3. Manually unfold main platform. Always stand on curbside of truck when unfolding platform.</p>	
<p>4. Manually unfold flipover section. Always stand on curbside of truck when unfolding flipover section.</p>	
<p>5. Raise and lower platform using UP and DOWN functions of control switch.</p>	
<p>6. Reverse steps to fold and store platform. Make sure platform is locked in storage position with latch pin after use.</p>	
<small>ATU-423</small>	

NOTICE
<p>THIS LIFTGATE IS PROTECTED WITH AN ELECTRICAL OVERLOAD CIRCUIT PROTECTION DEVICE, EITHER A CIRCUIT BREAKER, OR A FUSE, AND IS LOCATED NEAR THE POWER SUPPLY</p>
<small>A-150238</small>

<p>AFTER USING LIFTGATE, SECURE LATCH AND, IF EQUIPPED WITH POWER CUT OFF SWITCH, TURN OFF POWER TO PREVENT UNAUTHORIZED USE OF LIFTGATE.</p>
<small>ATU-141</small>

⚠ CAUTION	
<p> Make sure the proper "maximum capacity" decal is placed on the appropriate liftgate. For example, A-131061 "2500 lb. Maximum Capacity" decal goes on DCT-2500 models only. Do not put a higher rated decal (3300 pound) on a liftgate with a lower capacity; this could result in liftgate damage or possibly personal injury.</p>	
<p>2500 lb. MAXIMUM CAPACITY</p>	<p>3300 lb. MAXIMUM CAPACITY</p>
<small>A-131061</small>	<small>A-131136</small>

6 — A-131017 (attached near latch mechanism)

Note:

Disengage "latch" before attempting to use liftgate.

Engage "latch" after using liftgate.

A-131017

7 — A-131036 (attached to liftframe)

ANTHONY
LIFTGATES, INC.®

⚠ CAUTION SECURE LATCH WHILE IN TRANSIT.

A-131034

8 — A-131133 (attached to pump box)

This hydraulic reservoir is filled with Kendall Glacial Blue hydraulic fluid. Use ONLY the same or equivalent fluid.

A-131133

9 — A-150601 (attached to platform)

**PROUDLY
MADE IN USA**

A-150601

10 — A-131028 (attached to pump box)

WELD WARNING!

For all Anthony "Service-Free" Liftgates

When performing welding during installation, service, or repair on Anthony "SF" Service-Free liftgates, the actual part being welded must be grounded. Failure to follow this instruction can cause the welding ground to travel through the high pressure hydraulic hose as the source of ground, thus causing damage to the hose from the powerful electric current. The resulting damage to the hose may or may not be visible and can cause unexpected catastrophic failure of the lift. If you have any questions, please contact Anthony Liftgates, Inc., Pontiac, Illinois, USA (800-482-0003).

A-131028

11 — A-131125 (attached to adapter tube frame of galvanized liftgates)



⚠ WARNING

Welding on galvanized and stainless steel parts gives off especially hazardous fumes.

- Remove galvanizing from area to weld.
- Provide good ventilation.
- Wear suitable respirator.

A-131125

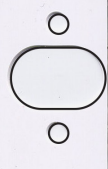
12 — A-131001 (inside the pump box)

10 AMP FUSE & HOLDER
Protects against dead shorts in this "control circuit".
If blown, pull "fuse holder cap", replace fuse, replace "cap". If fuse continues to blow, contact a qualified mechanic, "control circuit" may be damaged.

A-131001

10 AMP FUSE & HOLDER
Protects against dead shorts in this "control circuit".
If blown, pull "fuse holder cap", replace fuse, replace "cap". If fuse continues to blow, contact a qualified mechanic, "control circuit" may be damaged.

13 — A-131036 (on the power cable)



⚠ WARNING

View fuse through clear fuse holder. If blown, replace as follows:

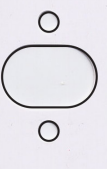
Liftgate fuse changing procedure.

Warning! To avoid injury, disconnect the liftgate's power from the battery(ies) before replacing the fuse, or before disassembling the fuse holder. Do not ignore this warning or an "arc" can occur and personal injury or property damage could result.

1. Pull back rubber boots from fuse holder.
2. Unscrew the fuse holder ends from the fuse holder body and pull apart.
3. Slide the fuse holder body one direction (left or right) to expose the blown fuse.
4. Loosen screws from each end of fuse, remove and replace fuse. Tighten screws.
5. Re-assemble in reverse order. Be sure the rubber boots seal around the fuse holder and cable.
6. Re-connect power after you are certain liftgate area is clear.

Note: Check for spare fuse in liftgate manual packet. If fuses continue to blow contact a qualified mechanic to remedy the problem.

Anthony Liftgates, Inc. Ph: 800-482-0003



A-131036

16.3 Decal / Installation Kits

Item	Part Number	Description	Qty.
—	ATU-5210	DCT-25 DECAL KIT (2500LB CAPACITY)	1
—	ATU-5210-A	DCT-25 DECAL KIT (ALUMINUM) (2500LB CAPACITY)	1
—	L-801-IM	DCT INSTALLATION AND OPERATION MANUAL	1
—	ATU-5211	DCT-33 DECAL KIT (3300LB CAPACITY)	1
—	ATU-5211-A	DCT-33 DECAL KIT (ALUMINUM) (3300LB CAPACITY)	1

— DECAL/INSTALL KIT (2500 LB CAPACITY)

Item	Part Number	Description	Qty.
—	A-133063	FUSE, 200A	1
—	L-801-IM	DCT INSTALLATION AND OPERATION MANUAL	1
1	A-131115	DECAL: WARNING - PERSONAL INJURY	1
2	ATU-423	DECAL: OPERATING INSTRUCTIONS	1
4	ATU-141	DECAL: AFTER USING LIFTGATE	1
5	A-131061	DECAL: 2500LB MAXIMUM CAPACITY	1
6	A-131017	DECAL: NOTE - DISENGAGE LATCH	1
10	A-131028	DECAL: WELD WARNING	1
13	A-131036	WIRE DECAL: WARNING - FUSE REPLACEMENT INSTRUCTIONS	1
—	ATU-071	LEVELING SHIM	6

— DECAL/INSTALL KIT (3300 LB CAPACITY)

Item	Part Number	Description	Qty.
—	A-133063	FUSE, 200A	1
—	L-801-IM	DCT INSTALLATION AND OPERATION MANUAL	1
1	A-131115	DECAL: WARNING - PERSONAL INJURY	1
2	ATU-423	DECAL: OPERATING INSTRUCTIONS	1
4	ATU-141	DECAL: AFTER USING LIFTGATE	1
5	A-131061	DECAL: 2500LB MAXIMUM CAPACITY	1
6	A-131017	DECAL: NOTE - DISENGAGE LATCH	1
10	A-131028	DECAL: WELD WARNING	1
13	A-131036	WIRE DECAL: WARNING - FUSE REPLACEMENT INSTRUCTIONS	1
—	ATU-071	LEVELING SHIM	6

16.4 Decal Only Kits

— DECAL KIT ONLY (2500 LB CAPACITY)

Item	Part Number	Description	Qty.
1	A-131115	DECAL: WARNING - PERSONAL INJURY	1
2	ATU-423	DECAL: OPERATING INSTRUCTIONS	1
4	ATU-141	DECAL: AFTER USING LIFTGATE	1
5	A-131061	DECAL: 2500LB MAXIMUM CAPACITY	1
6	A-131017	DECAL: NOTE - DISENGAGE LATCH	1
10	A-131028	DECAL: WELD WARNING	1
13	A-131036	WIRE DECAL: WARNING - FUSE REPLACEMENT INSTRUCTIONS	1

— DECAL KIT ONLY (3300 LB CAPACITY)

Item	Part Number	Description	Qty.
1	A-131115	DECAL: WARNING - PERSONAL INJURY	1
2	ATU-423	DECAL: OPERATING INSTRUCTIONS	1
4	ATU-141	DECAL: AFTER USING LIFTGATE	1
5	A-131061	DECAL: 2500LB MAXIMUM CAPACITY	1
6	A-131017	DECAL: NOTE - DISENGAGE LATCH	1
10	A-131028	DECAL: WELD WARNING	1
13	A-131036	WIRE DECAL: WARNING - FUSE REPLACEMENT INSTRUCTIONS	1

ANTHONY
LIFTGATES, INC.®

DCT



ANTHONY LIFTGATES, INC.
1037 W. HOWARD ST. • P.O. BOX 615
PONTIAC, IL 61764-0615
PH: 815-842-3383
FAX: 815-844-3612
TOLL FREE: 800-482-0003
WWW.ANTHONYLIFTGATES.COM