

ANTHONY
LIFTGATES, INC.®

ETU



PARTS BOOK

MODELS

ETU-20-44

ETU-25-50



For Serial Number 123751 and Greater

QUALITY, RELIABILITY, CUSTOMER SERVICE

MADE IN THE USA 

Contents

1. General Information Section	3
1.1 Introduction	3
1.2 Serial Number	3
1.3 If Installation Help is Required	4
1.4 Replacement Safety Signs (Decals)	4
2. Safety	4
2.1 Safety is Your Responsibility	4
2.2 General Safety Rules	4
3. Nomenclature	5
3.1 Platform Nomenclature	5
3.2 Gravity-Down Power Unit Nomenclature	5
4. Standard Floor Extension, Dock Bumpers, and Decals	6
5. Pump Box Assembly	7
6. Hydraulic Power Pack	8
7. Hydraulic System	10
8. Adapter Frame Assembly	11
9. Lift Frame Assembly	12
10. Platform Assemblies	14
11. Safety and Instructional Decals	16
11.1 General Information	16
11.2 Decal Part Numbers	16

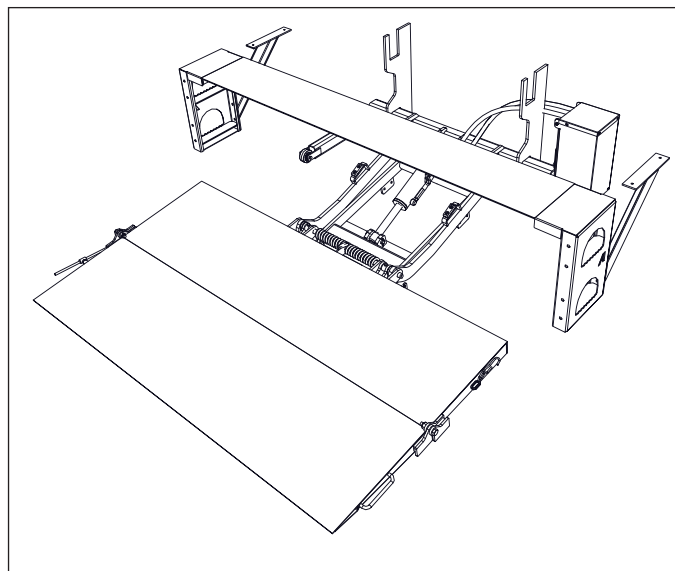
1. General Information Section

1.1 Introduction

Congratulations on selecting an Anthony Liftgates TuckUnder™ liftgate.

All Anthony tuckunder model liftgates are factory assembled, energized, and tested to ensure the highest quality performance standards. ETU model liftgates ship completely assembled for fast, clean, and easy installation.

To ensure your liftgate will perform to your expectations, we have provided this Installation Manual, which is designed to provide you with the necessary installation instructions and safety precautions for the installation of the ETU model TuckUnder™ liftgates.

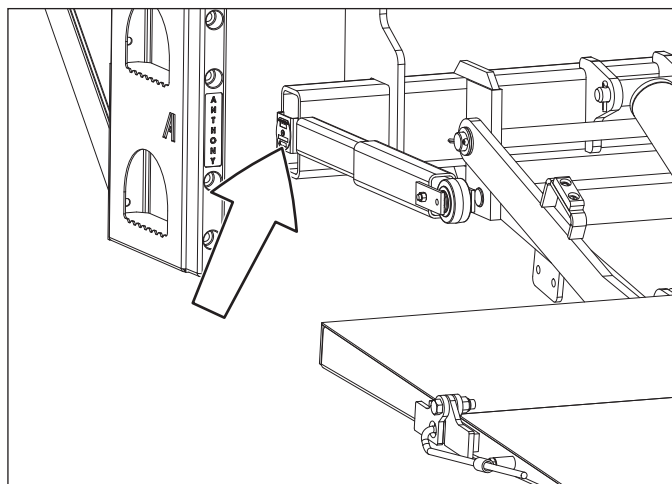


Typical Anthony Liftgates ETU Tuckunder Model.

1.2 Serial Number

Before calling for warranty or other product information, have the serial number, model number, and lift capacity of your liftgate available. This information is stamped into the identification plate on the curbside of the pump box and will help us verify your warranty information and your specific liftgate.

Record the serial number, model number, date of installation, and load capacity in the Operation Manual for easy reference when contacting your authorized dealer with questions.



Location of Serial Number Identification Plate.

1.3 If Installation Help is Required

Anthony Liftgates manufactures high-quality liftgates that require very little maintenance or repair. However, should a part break, become damaged, or need replacement due to normal part wear, our knowledgeable dealers can make sure you receive the part(s) to put your liftgate back into operation.

For additional information on installation, refer to the ETU TuckUnder™ liftgate website www.anthonyliftgates.com. To find the most current version of the reference material, choose LIFTGATES, TUCKUNDER™, ETU, and then DOWNLOADS.

If you have any doubts or questions about installation, call us. Before doing so, have the serial number, model number, and lift capacity of your liftgate available.

Anthony Liftgates, Inc.
1037 West Howard Street
Pontiac, Illinois 61764
(815) 842-3383 or 800-482-0003

1.4 Replacement Safety Signs (Decals)

SAFETY INSTRUCTIONS



To prevent the personal injury of the end user from not being aware of safety recommendations, the owner/operator must make sure all decals are attached to the liftgate and truck and are legible.

To ensure the greatest level of safety, all decals must be attached to specified replacement parts and be legible at all times. Remember, it is the users' or maintenance personnel's responsibility to make sure these decals are attached to the replacement parts.

For service or ordering replacement parts, contact an authorized dealer by going to www.anthonyliftgates.com and selecting the FIND A DEALER tab. Enter your zip code to find the nearest authorized service location.

2. Safety

2.1 Safety is Your Responsibility

It is the responsibility of the installer to understand proper installation and operating procedures. Be aware of the inherent dangers in the use of this product and the tools used to install it. Read and understand all Warnings, Cautions, Notices, Safety Instructions, and Notes in this manual, on the liftgate, or on the truck.

Also, refer to the Installation, Operation, or Maintenance Manuals for a more complete list of safety topics.

2.2 General Safety Rules



Do not work under the liftgate while it's in a raised position. Failure of

the liftgate's structural components, while replacing parts, could cause serious crushing injuries.



When installing replacement parts, wear appropriate personal protective equipment. This list may include, but is not limited to:

- A hard hat.
- Protective shoes with slip resistant soles.
- Protective goggles, glasses, or face shield.
- Protective clothing.



Do not attempt to install replacement parts under the influence of drugs or alcohol.



Do not install a replacement part if it's damaged. If you believe the part has a defect, which could cause it to work improperly, you should immediately stop the installation and remedy the problem before continuing.



Make sure the liftgate or truck will not be damaged or made unsafe by the installation of the replacement part.



Always use genuine, factory OEM replacement parts to restore the liftgate to its original specifications. Anthony Liftgates will not accept responsibility for damages as a result of using unapproved parts. If non-OEM replacement parts are used, the warranty will be voided.



Anthony Liftgates recommends not riding the liftgate; however, if the operation requires it, make sure your footing is stable before raising or lowering the platform. Always stand away from the edge. When on the ground, always stand clear of the liftgate when it is operating.



To prevent injury, replacement parts should only be installed by a qualified installer having installation knowledge and skill.



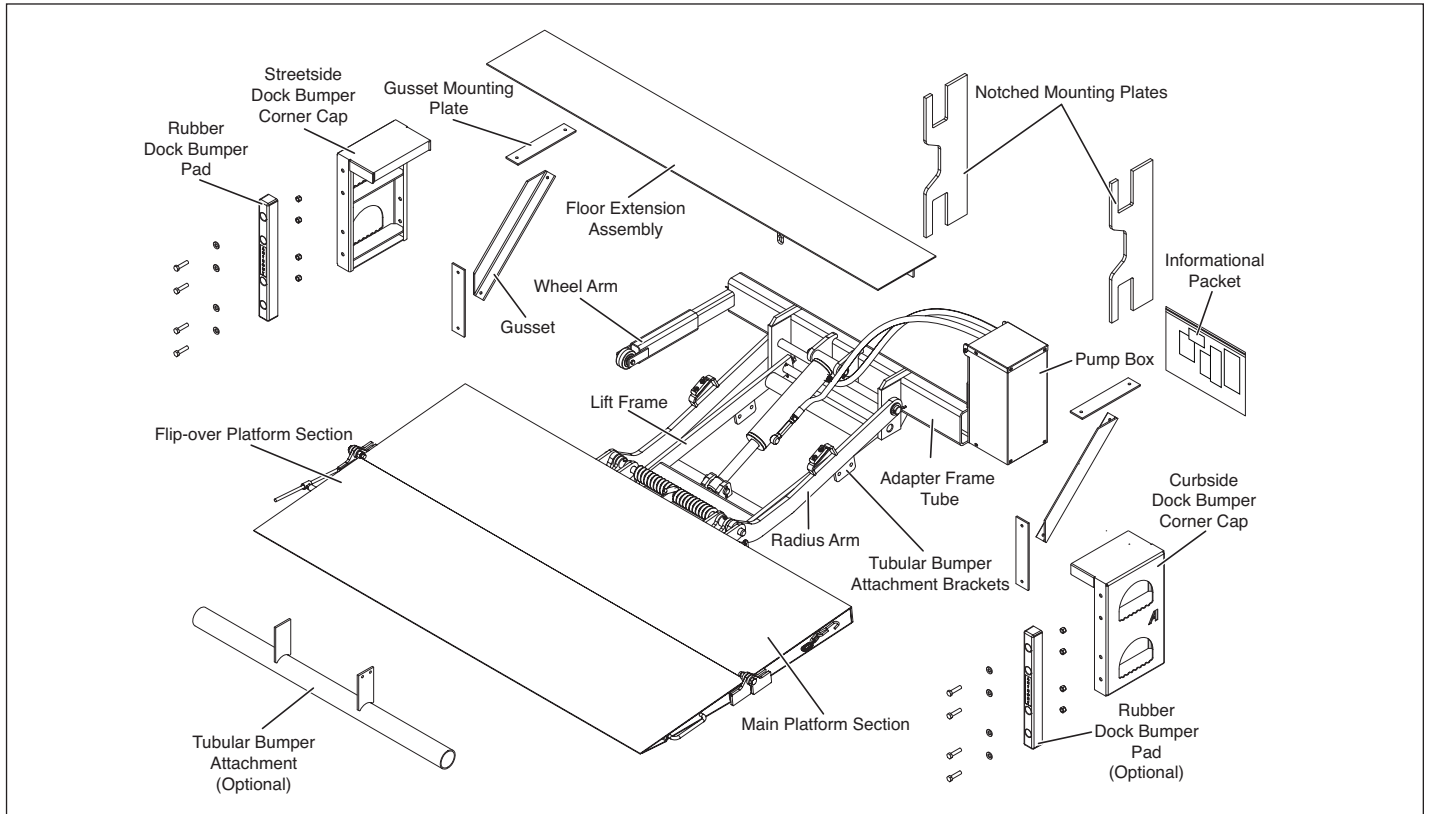
Do not modify safety devices. Unauthorized modifications may impair the liftgates function and/or safety features.



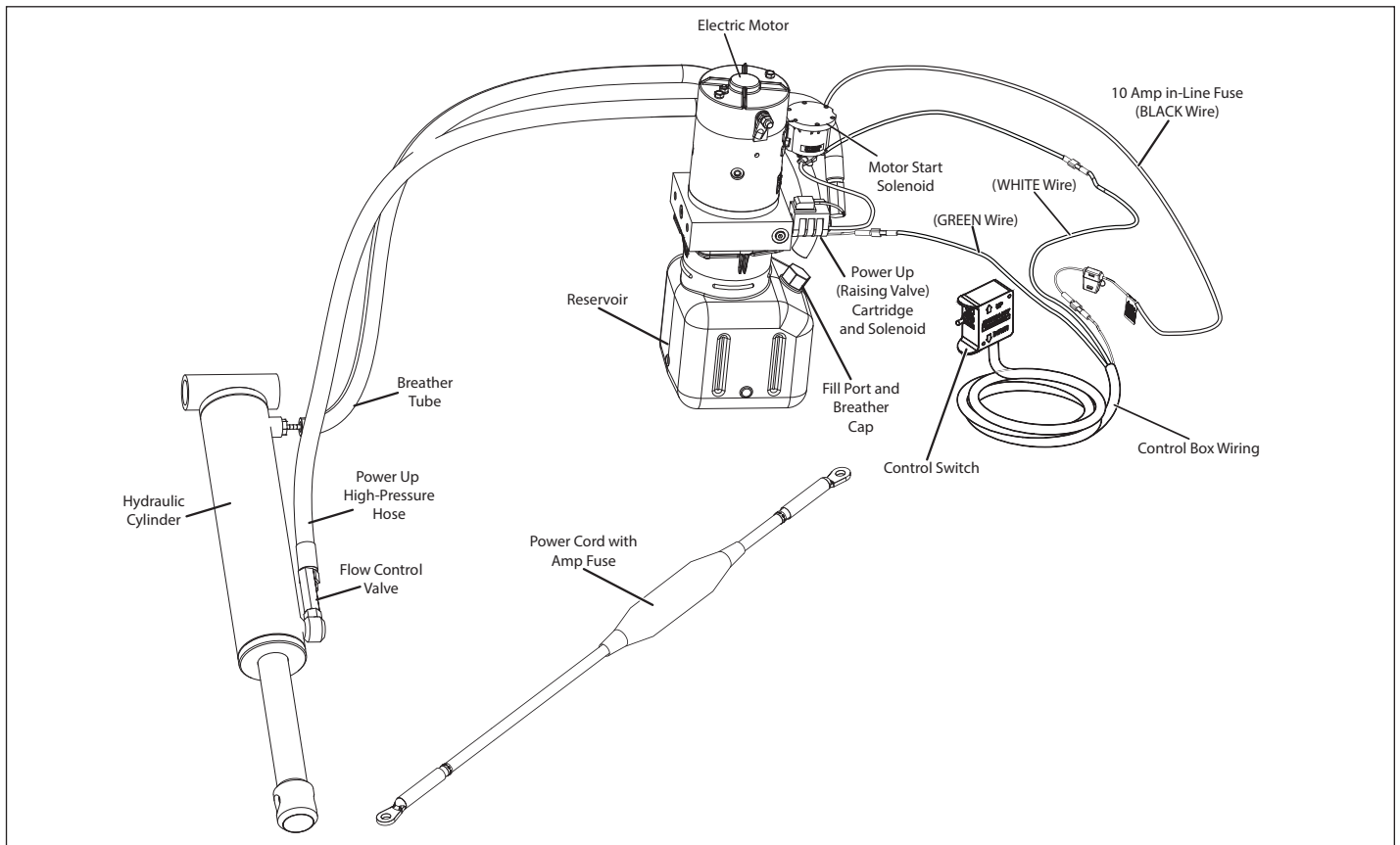
Make sure all replacement parts are in good working condition and properly installed.

3. Nomenclature

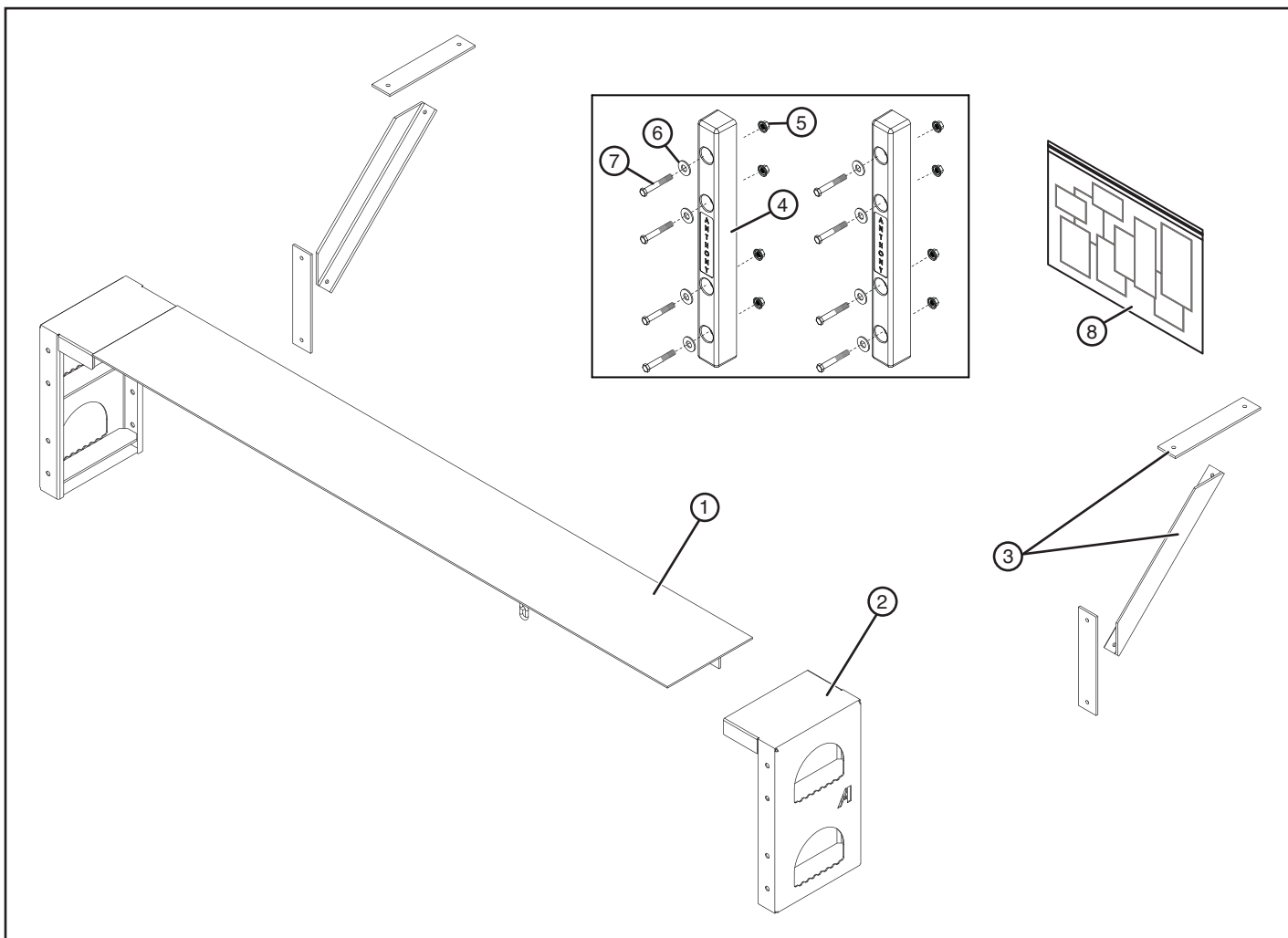
3.1 Platform Nomenclature



3.2 Gravity-Down Power Unit Nomenclature

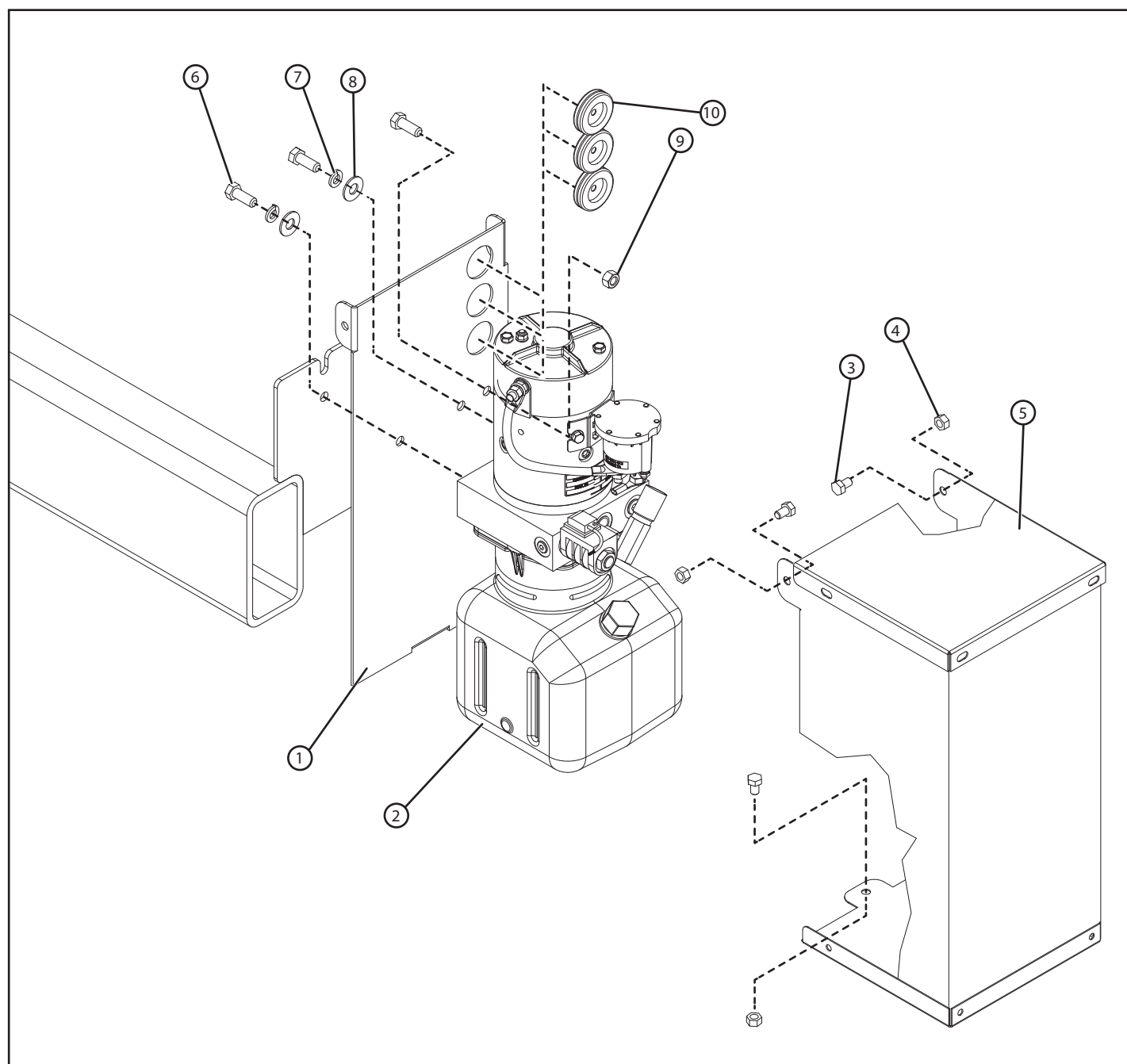


4. Standard Floor Extension, Dock Bumpers, and Decals



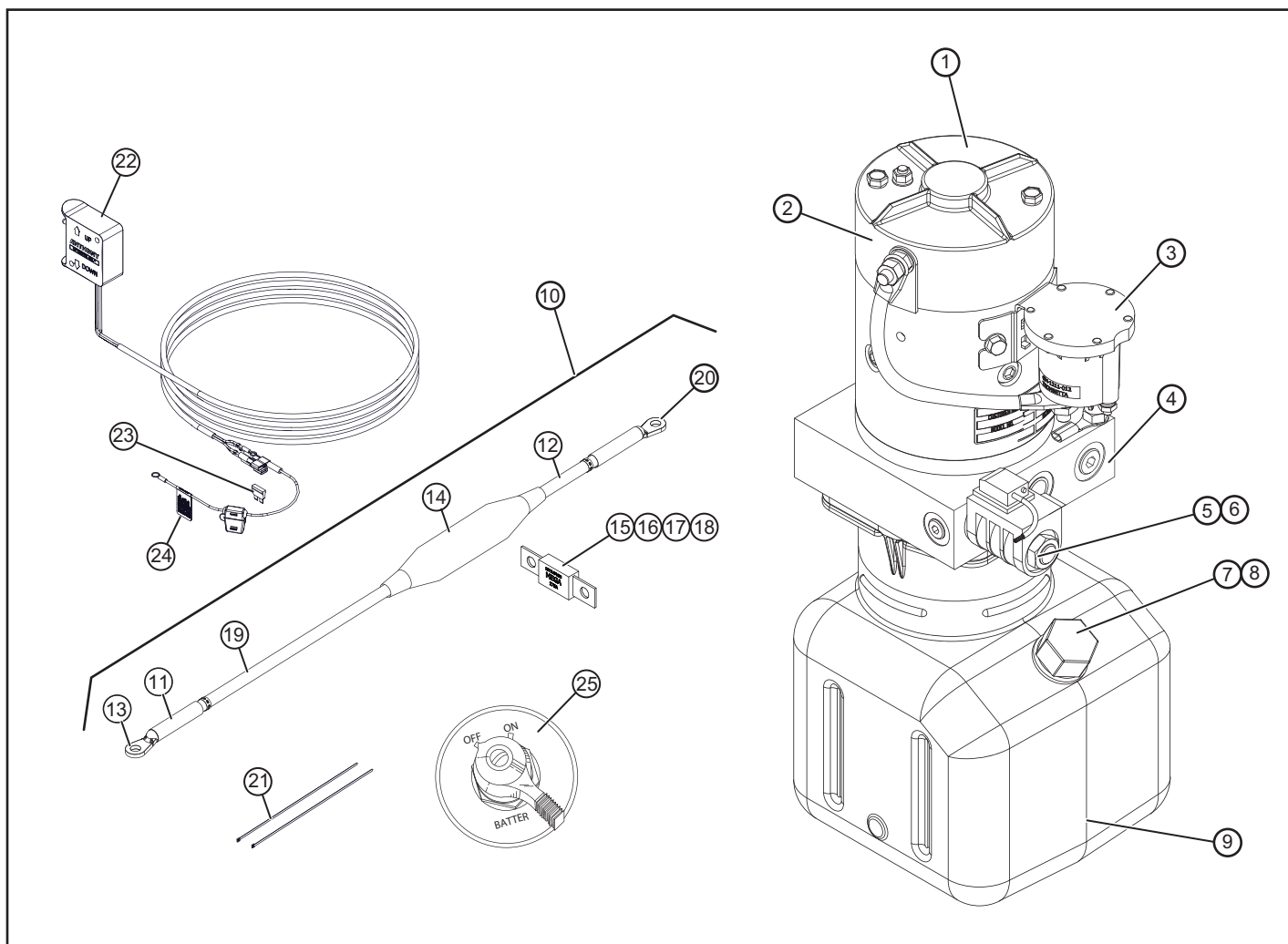
Item	Part Number	Description	Qty.
1	ETU-064	FLOOR EXT W/M-EXP-12x96x3/16	1
2	ETU-077	DOCK B ASSY-2 STEP, FORMED	2
3	ETU-084 ETU-085	BUMPER GUSSET PLATE BUMPER GUSSET- WELD ON ANGLE	4 2
4	ATU-798	PAD, DOCK BUMPER, 20"	2
5	A-132301	1/2-13 NYLOCK GR8 NUT ZP	8
6	A-150065	1/2" FLAT WASHER, ZP	8
7	ATU-259	1/2-13 X 2.0 GR8 HEX BOLT ZP	8
8	ETU-102	DECAL & INST. PACKET ETU-2000	1
	ETU-103	DECAL & INST. PACKET ETU-2500	
	ETU-104	DECAL KIT ONLY- ETU-2000	
	ETU-105	DECAL KIT ONLY- ETU-2500	
	L-901	ETU MANUAL SET (INCLUDES INSTALLATION, MAINTENANCE, AND OPERATION MANUALS)	

5. Pump Box Assembly



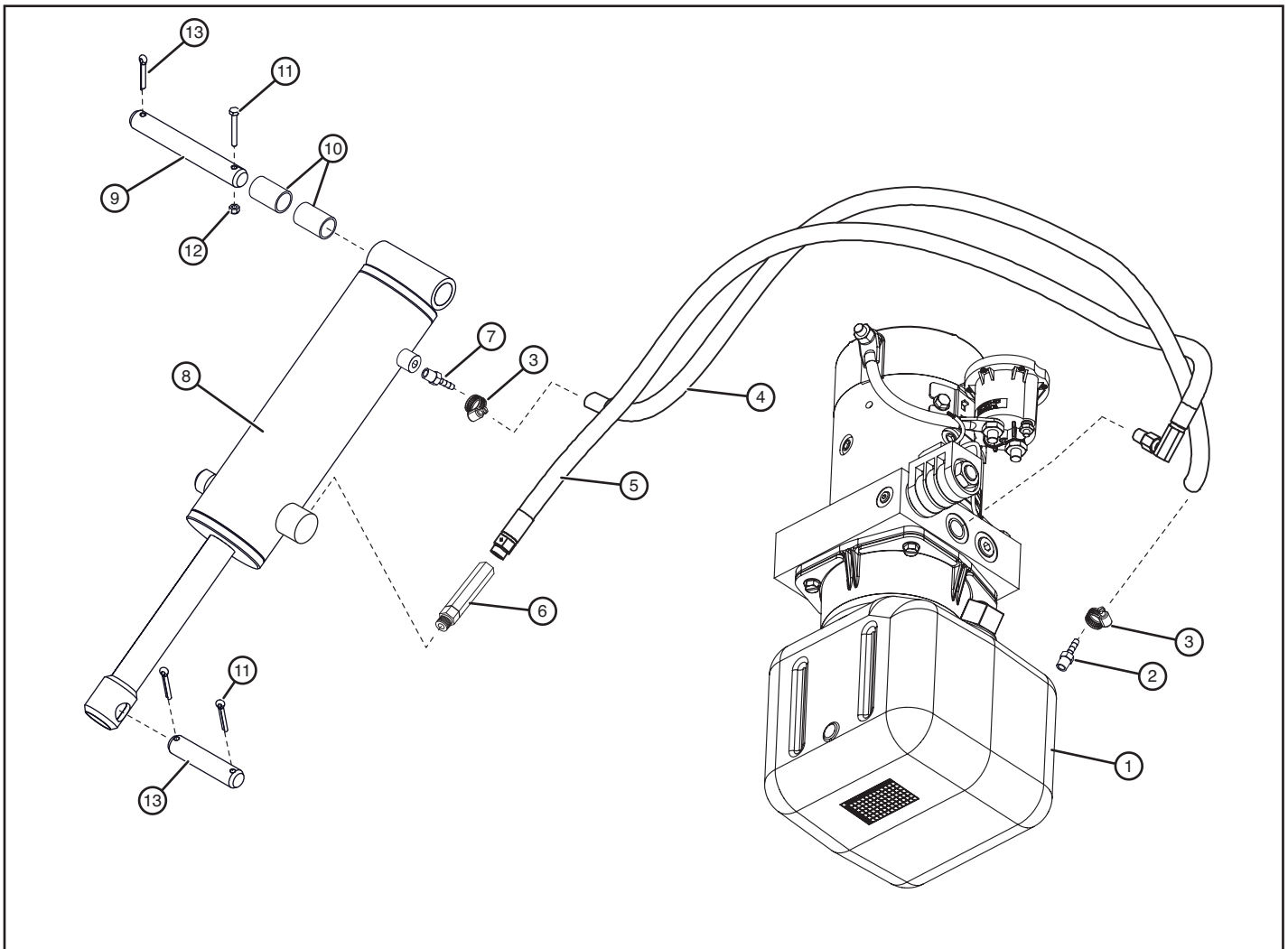
Item	Part Number	Description	Qty.
1	ETU-059	VERTICAL PUMP BOX BACKING PLATE	1
2	ETU-099	POWER UNIT ASSY- ETU G/D 2000/2500# MTE	1
3	5435	5/16-18 X .75" HEX BOLT	3
4	862	5/16-18 LOCKNUT	3
5	ETU-055	VERTICAL PUMP BOX ASSY.	1
6	874	3/8-16 X 1" H/H C/S GR.8 ZP	3
7	2054	3/8 LOCK WASHER	2
8	2058	3/8 FLAT WASHER	2
9	2064	3/8-16 REVERSIBLE HEX L/N ZP	1
10	ETU-060	GROMMET W/ HOLE FOR 1.375" .125 GROOVE	3

6. Hydraulic Power Pack



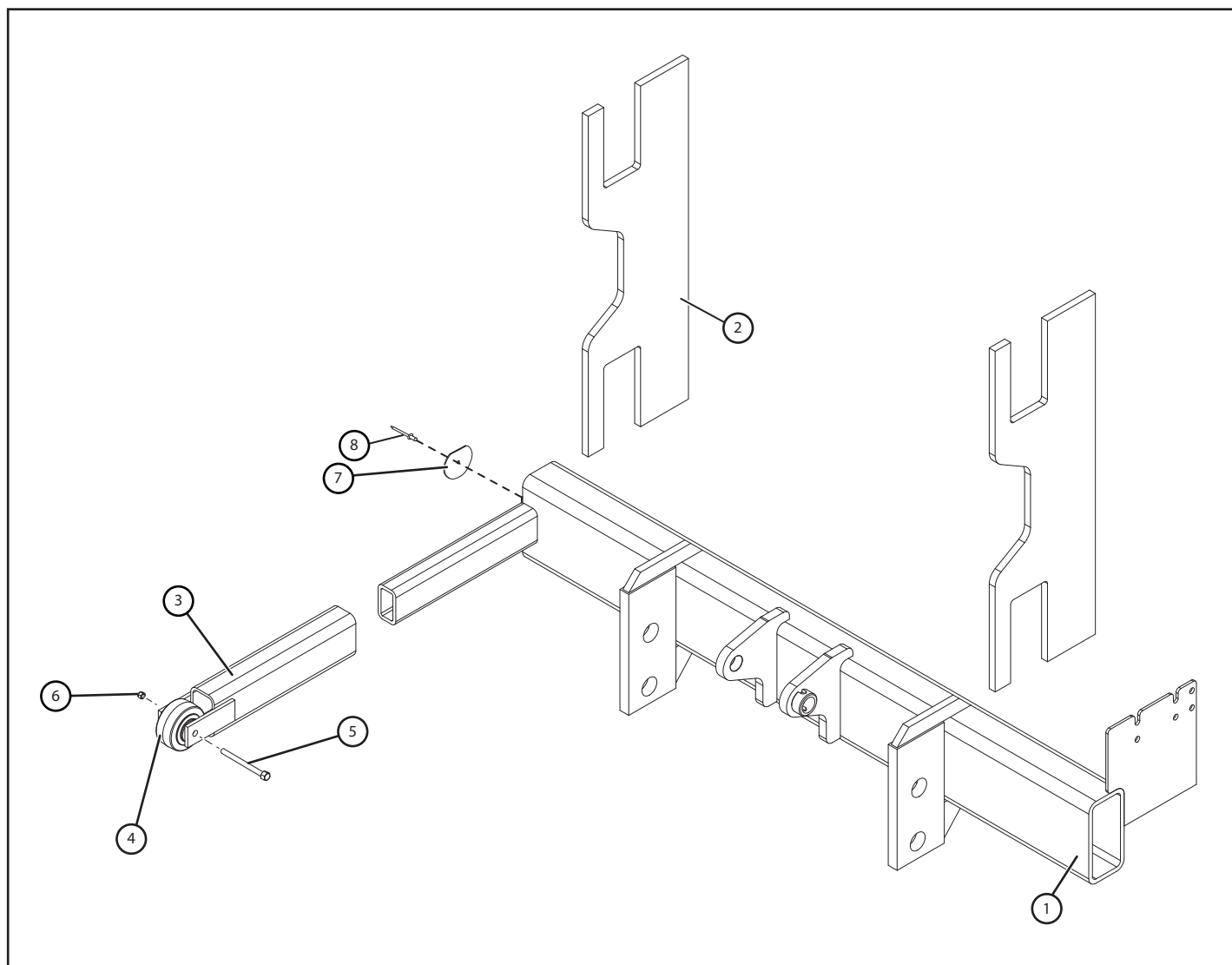
Item	Part Number	Description	Qty.
1	ETU-099	POWER UNIT ASSY- ETU G/D 2000/2500# MTE	1
2	A-130450	MOTOR	1
3	A-130451	MOTOR START SOLENOID	1
4	A-130449	PUMP / MANIFOLD	1
5	A-130447	VALVE	1
6	A-130448	COIL	2
7	A-130453	BREATHER CAP	1
8	A-130452	BREATHER CAP GROMMET	1
9	A-130455	TANK	1
10	A-133604	POWER CABLE ASSEMBLY (INCLUDES ITEMS 11 - 20)	1
11	A-150990	HEAT SHRINK (2.5")	2
12	A-150608	2/0 CABLE	10"
13	A-133605	5/16" ANTI-ROTATIONAL LUG - #4 CABLE	3
14	A-133606	HEAT SHRINK (8")	1
15	A-133603	HI-AMP FUSE, 175A	1
	A-133607	FUSE KIT, REPLACEMENT (INCLUDES FUSE, INSTRUCTION SHEET, AND ITEMS 14, 16, 17, AND 18)	—
	A-133608	FUSE REPLACEMENT INSTRUCTIONS (INCLUDES IN A-133607)	—
16	5435	5/16-18 X .75" HEX BOLT	2
17	6611	5/16 SPLIT LOCKWASHER	2
18	4614	5/16-18 FINISHED H/N ZP	2
19	A-150608-420	2/0 CABLE	420"
20	A-133003	3/8" ANTI-ROTATIONAL RD LUG - #2 CABLE	1
21	A-132079	SELF LKG CABLE TIE - 8" UV-RESIST	2
22	A-133553	SWITCH ASSY: GRAVITY DOWN SWITCH ASSY W/CABLE, PLASTIC BOX (2.5" X 3" X 1")	1
23	A-150438	FUSE, 10A	1
24	A-131001	DECAL: 10A FUSE & HOLDER	1
OPTIONAL ACCESSORIES (sold separately)			
25	A-133038	CUT-OFF SWITCH KIT - MANUALLY OPERATING	1
	A-150031	SWITCH, CUT-OFF - MANUALLY OPERATING	

7. Hydraulic System



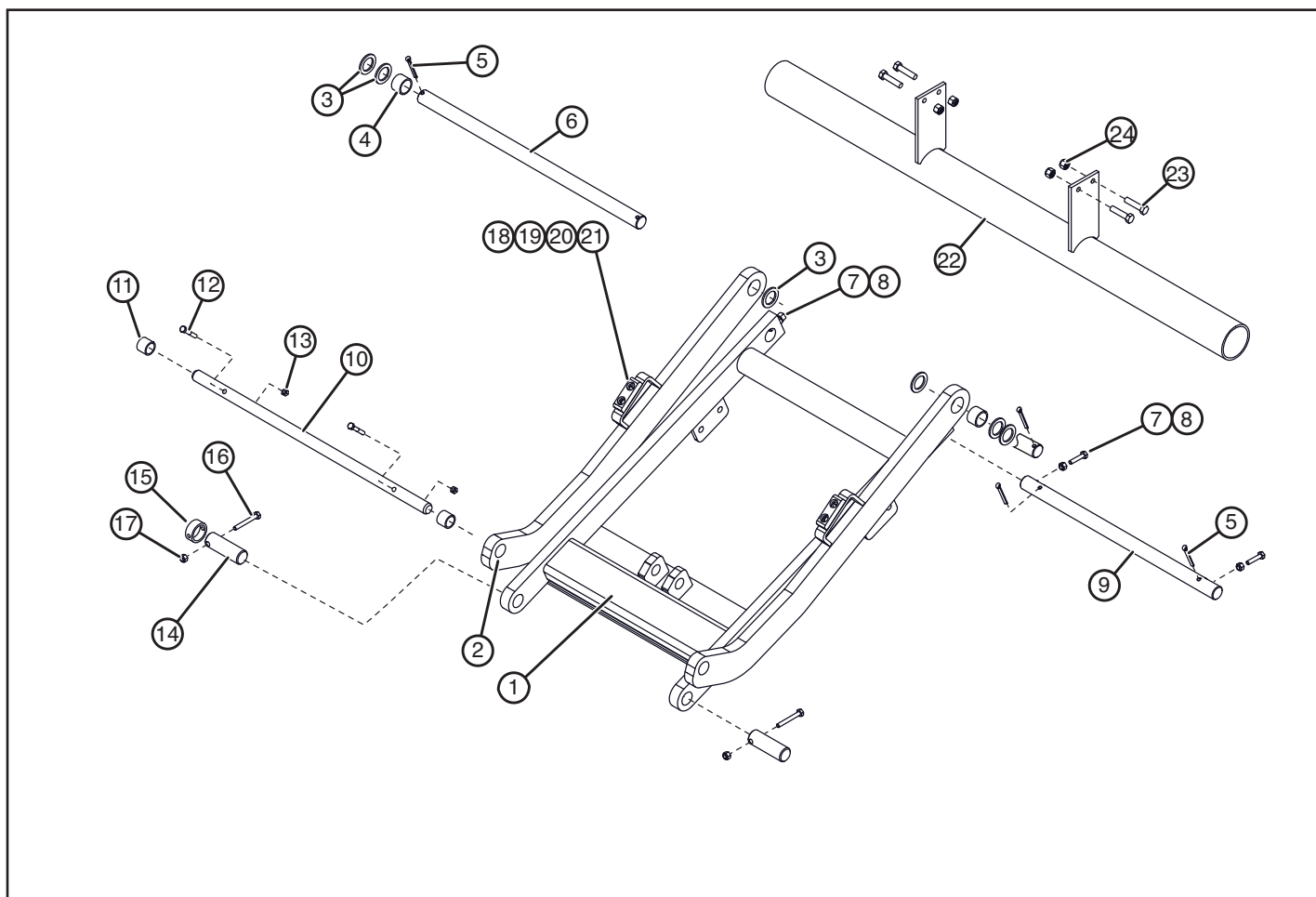
Item	Part Number	Description	Qty.
1	ETU-099	POWER UNIT ASSY- ETU G/D 2000/2500# MTE	1
2	ATU-124	FITTING: HOSE BARB 06MORB TO 1/4 HOSE	1
3	A-130392	CLAMP, HYDRAULIC HOSE	2
4	A-130071	CLEAR PLASTIC HOSE, PER INCH (1/4")	50
5	A-130445	HOSE - 3/8" X 55", 06FJS-06MORB	1
6	A-130100	RESTRICTOR VALVE 1.50 GPM SAE□	1
7	A-130143	FITTING: HOSE BARB 06MORB TO 3/16	1
8	A-130442 A-130443	CYLINDER 3" BORE X 10.75" STROKE-EXPRESS, ETU-20 CYLINDER 4" BORE X 10.75" STROKE-EXPRESS, ETU-25	1
9	ATU-102	PIN, CYLINDER DEAD END MOUNT	1
10	ATU-427	CYLINDER PIN BUSHING	2
11	ATU-358	1/4"-20 x 2.0" H/C/S ZP	1
12	ATU-359	1/4-20 TOP L/N GR. C ZP	1
13	A-132026	1/4" X 1-1/2" LG COTTER PIN, 18-8 SS	3

8. Adapter Frame Assembly



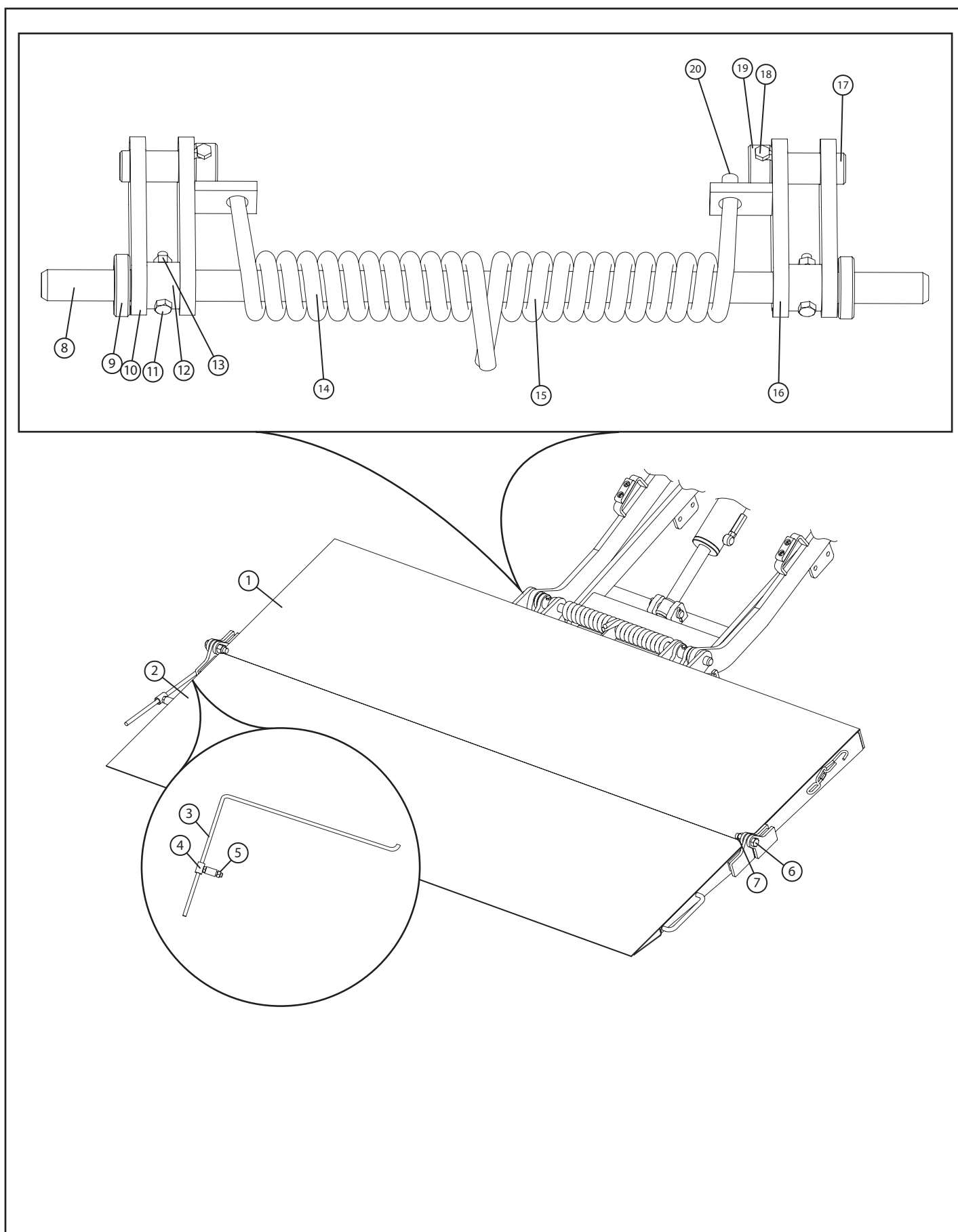
Item	Part Number	Description	Qty.
1	ETU-050	ADAPTER FRAME W/M	1
2	ETU-053	MOUNTING PLATE- AMBIDEXTROUS	2
3	ETU-096	WHEEL ARM SLIDE TUBE W/M	1
4	ATU-795	3" ROLLER WHEEL ASSEMBLY	1
5	A-132039	3/8-24 X 3" H/H BOLT GR. 8 ZP	1
6	2184	3/8-24 REVERSIBLE HEX L/N GR. 8 ZP	1
7	A-131022	ANTHONY SERIAL NUMBER TAG	1
8	A-132030	3/16" DIA. ALUM. RIVET, .126-.250 GRIP	1

9. Lift Frame Assembly



Item	Part Number	Description	Qty.
1	ETU-066	LIFT FRAME (ETU-20)	1
	ETU-087	LIFT FRAME (ETU-25)	
2	ATU-1589	RH RADIUS ARM W/BUSHINGS (ETU-20)	2
	ATU-1583	RH RADIUS ARM W/BUSHINGS (ETU-25)	
3	ATU-134	1-7/8" OD X 1-17/64" ID X 10 GA BUSHING	6
4	ATU-430	COMPOSITE BUSHING	2
5	A-132027	1/4" X 2-1/4" LG COTTER PIN, 18-8 SS	4
6	ATU-112	RADIUS ARM PIN W/ BUSHINGS	1
7	S-094005	1/2-13 X 1-1/2" SQHD KNURLED CUP S/S ZP	2
8	880	1/2-13 HEX NUT GR8 ZP	2
9	ATU-111	LIFT FRAME PIN	1
10	ATU-104	PIN - PLATFORM AND CAMS	1
11	ATU-429	PLATFORM PIN BUSHING	2
12	869	5/16-18 X 2" HEX BOLT	2
13	862	5/16-18 LOCKNUT	2
14	ATU-1485	CAM PLATE PIN	2
15	ATU-402	CAM PIN LOCK COLLAR	2
16	ATU-358	1/4-20 X 2" GRADE 8 BOLT	3
17	ATU-359	1/4-20 LOCKNUT	3
18	A-140090	WEAR PAD/BUMPER	2
19	S-047004	1/4-20 X 1" SLOTTED RDHD M/S ZP	4
20	2051	1/4" F/W ZP	4
21	2029	1/4-20 FLANGED L/N ZP	4
22	ATU-5163	ICC BUMPER ATTACHMENT W/M DCT (sold seperately)	1
23	ATU-259	1/2-13 X 2" H/H C/S GR. 8 ZP (sold seperately)	4
24	A-132301	1/2-13 NYLOCK GR8 NUT ZP (sold seperately)	4

10. Platform Assemblies



Item	Part Number	Description	Qty.
--	ETU-001	STEEL PLATFORM ASSEMBLY, COMPLETE, 80" X 44" STEEL WEDGE	1
1	ETU-003	STEEL PLATFORM MAIN SECTION, 80 X 44	1
2	ETU-005	STEEL PLATFORM FLIP SECTION, 80" X 44"	1
--	ETU-002	STEEL PLATFORM ASSEMBLY, COMPLETE, 80" X 50" STEEL WEDGE	1
1	ETU-004	STEEL PLATFORM MAIN SECTION, 80 X 50	1
2	ETU-006	STEEL PLATFORM ASSEMBLY, COMPLETE, 80" X 50" STEEL WEDGE	1
3	ATU-5264	SPRING, FLIPOVER PLATFORM ASSIST	1
4	ATU-5236	SPRING RETAINER ASSEMBLY	1
5	A-132024	NUT	1
6	A-132119	BOLT: FLIP TO MAIN PLATFORM	2
7	A-180062	NUT: FLIP TO MAIN PLATFORM	2
8	ATU-104	PIN - PLATFORM AND CAMS	1
9	ATU-1122	SPACER	2
10	ATU-940	CAM PLATE ASSY. RH - (4 3/4") RAMP RIDE	1
11	869	5/16-18 X 2" HEX BOLT	2
12	ATU-593	STOP COLLAR	2
13	862	5/16-18 LOCKNUT	2
14	ATU-518-R	SPRING - MAIN PLATFORM (RH)	1
15	ATU-518-L	SPRING - MAIN PLATFORM (LH)	1
16	ATU-941	CAM PLATE ASSY. LH - (4 3/4") RAMP RIDE	1
17	ATU-1485	CAM PLATE PIN	2
18	ATU-358	1/4-20 X 2" GRADE 8 BOLT	2
19	ATU-359	1/4-20 LOCKNUT	2
--	ATU-071	14GA SHIM FOR LEVELING STEEL PLATFORMS	—

11. Safety and Instructional Decals

11.1 General Information

SAFETY INSTRUCTIONS



To prevent personal injury from not being aware of safety recommendations, make sure appropriate decals are attached to any liftgate replacement part that contained that decal initially.

To ensure the greatest level of safety, all decals must be attached to specified replacement parts and must be legible at all times. Remember, it is the users' or maintenance personnel's responsibility to make sure these decals are attached to the replacement parts.

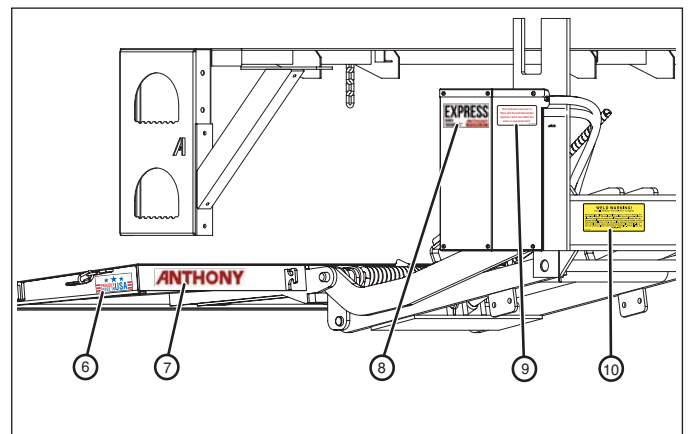
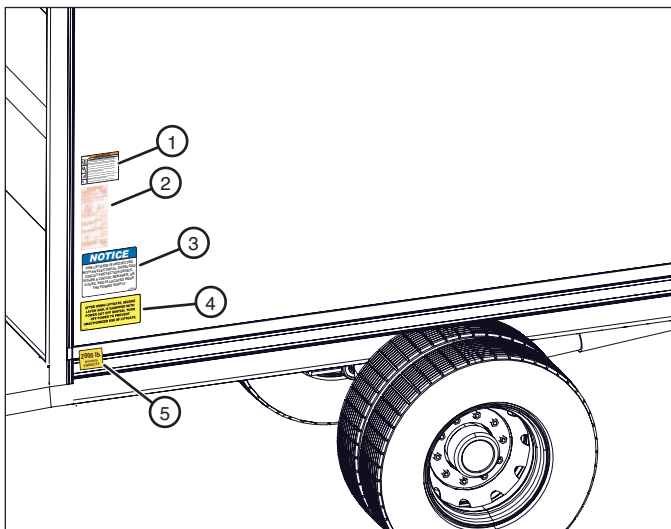
11.2 Decal Part Numbers

Item	Part Number	Description	Qty.
1	A-131115	DECAL: WARNING, PERSONAL INJURY	1
2	A-161150	DECAL: OPERATING INSTRUCTIONS	1
3	A-150238	DECAL: NOTICE - PROTECTED WITH ELECTRICAL OVERLOAD CIRCUIT BREAKER	1
4	ATU-141	DECAL: POWER CUT-OFF SWITCH	1
5	A-131020 ATU-174	DECAL: 2000 LB. MAXIMUM CAPACITY DECAL: 2500 LB. MAXIMUM CAPACITY	1
6	A-150601	DECAL: MADE IN THE USA	1
7	A-131147	DECAL: ANTHONY LABEL	1
8	A-131148	DECAL: EXPRESS SERIES	1
9	A-131133	DECAL: HYDRAULIC TANK FLUID	1
10	A-131028	DECAL: WELD WARNING	1
--	A-131001	DECAL: 10 AMP FUSE CHANGING PROCEDURE (attached to control wiring in pump box)	1

SAFETY INSTRUCTIONS



To prevent possible injuries due to improper operation, make sure all decals are attached to the liftgate and truck and are legible.



ANTHONY LIFTGATES, INC.	
⚠ WARNING	
PERSONAL INJURY HAZARD	
	<p>Operation may require user to stand on platform. To prevent injury or death of operators or bystanders:</p> <ul style="list-style-type: none"> • Read and follow operator/owner manual for safety, operation, inspection, and maintenance instructions. • Do not place unstable or unsafe loads on platform. • Do not allow loads to extend over edge of platform. • Do not exceed capacity or use liftgate for anything other than intended purpose. • Be aware of surroundings when operating liftgate. • Do not allow body parts to contact moving components. • Ensure footing is stable and stand away from edge before raising or lowering platform. • Owner/operators must properly maintain liftgate.

ANTHONY TUCKUNDER LIFTGATES OPERATING INSTRUCTIONS	
<p>1. Release latch chain. Liftgate may need to be slightly raised to release pressure on latch chain.</p>	
<p>2. Press control switch DOWN until folded platform rests on ground. Always stand on curbside of truck when raising or lowering platform with control switch.</p>	
<p>3. Manually unfold main platform. Always stand on curbside of truck when unfolding platform.</p>	
<p>4. Manually unfold flipover section. Always stand on curbside of truck when unfolding flipover section.</p>	
<p>5. Raise and lower platform using UP and DOWN functions of control switch.</p>	
<p>6. Reverse steps to fold and store platform. Make sure platform is locked in transport position with latch chain.</p>	

NOTICE
<p>THIS LIFTGATE IS PROTECTED WITH AN ELECTRICAL OVERLOAD CIRCUIT PROTECTION DEVICE, EITHER A CIRCUIT BREAKER, OR A FUSE, AND IS LOCATED NEAR THE POWER SUPPLY</p>
<p>A-150238</p>

<p>AFTER USING LIFTGATE, SECURE LATCH AND, IF EQUIPPED WITH POWER CUT OFF SWITCH, TURN OFF POWER TO PREVENT UNAUTHORIZED USE OF LIFTGATE.</p>
<p>ATU-141</p>

<p>2000 lb.</p> <p>MAXIMUM CAPACITY</p>
<p>A-131020</p>

<p>2500 lb.</p> <p>MAXIMUM CAPACITY</p>
<p>ATU-174</p>

<p>⚠ CAUTION</p>	<p>⚠</p>	<p>⚠</p>	<p>Make sure the proper "MAXIMUM CAPACITY" decal is placed on the truck for the appropriate lifting capacity of the liftgate being installed. Do not put a higher rated decal on a liftgate with a lower capacity; this could result in liftgate damage or possibly personal injury.</p>
-------------------------	-----------------	-----------------	--

6 — A-150601



— A-131001 (attached to control cable)

10 AMP FUSE & HOLDER
Protects against dead shorts
in this "control circuit".
If blown, pull "fuse holder
cap", replace fuse, replace
"cap". If fuse continues to
blow, contact a qualified
mechanic, "control circuit"
may be damaged.

A-131001

10 AMP FUSE & HOLDER
Protects against dead shorts
in this "control circuit".
If blown, pull "fuse holder
cap", replace fuse, replace
"cap". If fuse continues to
blow, contact a qualified
mechanic, "control circuit"
may be damaged.

7 — A-131147



8 — A-131148



9 — A-131133

This hydraulic reservoir is
filled with Kendall Glacial Blu
hydraulic fluid. Use **ONLY** the
same or equivalent fluid.

A-131133

10 — A-131028

WELD WARNING!

For all Anthony "Service-Free" Liftgates

When performing welding during installation, service, or repair on Anthony "SF" Service-Free liftgates, the actual part being welded must be grounded. Failure to follow this instruction can cause the welding ground to travel through the high pressure hydraulic hose as the source of ground, thus causing damage to the hose from the powerful electric current. The resulting damage to the hose may or may not be visible and can cause unexpected catastrophic failure of the lift. If you have any questions, please contact Anthony Liftgates, Inc., Pontiac, Illinois, USA (800-482-0003).

A-131028

ANTHONY
LIFTGATES, INC.®

ETU



ANTHONY LIFTGATES, INC.
1037 W. HOWARD ST. • P.O. BOX 615
PONTIAC, IL 61764-0615
PH: 815-842-3383
FAX: 815-844-3612
TOLL FREE: 800-482-0003
WWW.ANTHONYLIFTGATES.COM