

ANTHONY
LIFTGATES, INC.®

MRT



NEXT GENERATION MAGNUM RAILTRAC™

- SLASH MAINTENANCE COSTS
- MAXIMIZE UPTIME
- IMPROVE FLEET APPEARANCE

QUALITY, RELIABILITY, CUSTOMER SERVICE

MADE IN THE USA 



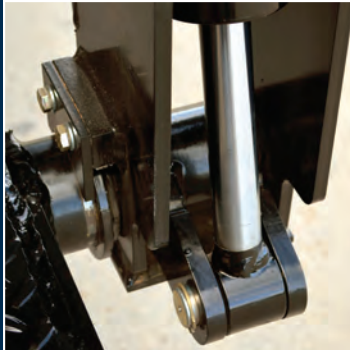
LOW PROFILE DESIGN

- Rail depth is a mere 10.5", with a 1/2" reinforcement at the dock contact area for strength with a sleek appearance.
- Fully recessed LED lights eliminate light boxes and bumpers that interfere with docks or dock pads.



AVAILABLE CORROSION PROTECTION INCLUDES STAINLESS STEEL RAILS

- Choose between stainless steel, hot dip galvanized, and Anthony's 3-step, powder coat finish.
- Stainless steel frame allows for clean, direct weld to any rear frame without the added cost, weight, or depth of bolt-on transitions.
- Galvanized and Stainless MRT's come with a 10-year warranty against corrosive structural failure in addition to a full 3-year warranty.

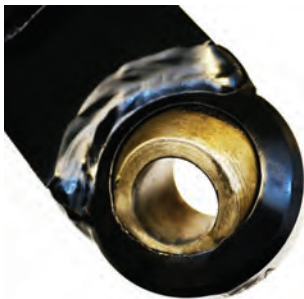


OVERSIZED PLATFORM OPENER

- 20% more surface than previous models to ensure longevity of a critical pivot point.

RETRACTED HYDRAULIC CYLINDERS

- Lift and opening cylinders are stored retracted and housed within the rail during transit.
- Provides protection against corrosion and increases cylinder life.



SELF-BLEEDING LIFT CYLINDERS WITH LEVELGUARD

- Automatically purge air from the hydraulic system to ensure firm, level lifting. Pivoting ends protect cylinders from scoring on unlevel ground.



LIFETIME WARRANTY SERVICE FREE BUSHINGS

- A proven standard on every Anthony liftgate, service free bushings protect critical pivot points without the need for routine lubrication.

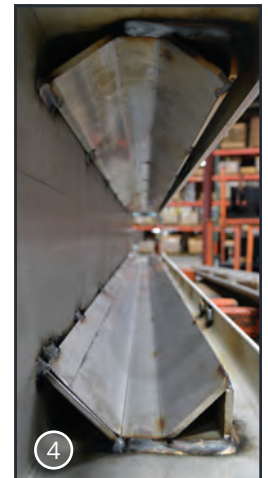
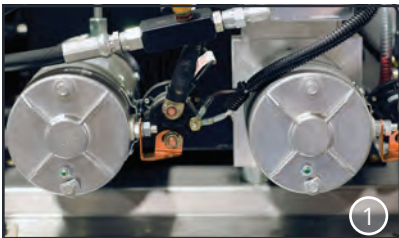


STAINLESS STEEL PUMP AND BATTERY BOXES

- Standard on every MRT, stainless steel enclosures provide the ultimate impact and corrosion protection for sensitive components.

CHS™ - CENTRALIZED HYDRAULICS SYSTEM

- All electrical components, including solenoids, are protected from the elements within the pump box. Provides longer life, simplified troubleshooting, and safe, ground-level access.



1. SYNCHRONIZED DUAL MOTORS

- Eliminate "stuck" backup motors when they're needed most. Load sharing helps to extend component life.

2. TIME TESTED CONTROLS

- Marine-duty potted toggles in EZ access housing provide maximum service life.

3. PATENT-PENDING RETENTION RAMP

- Eliminates chains, latches, or other moving parts for simple, maintenance-free operation.

4. LIFETIME WARRANTY SERVICE FREE SLIDERS

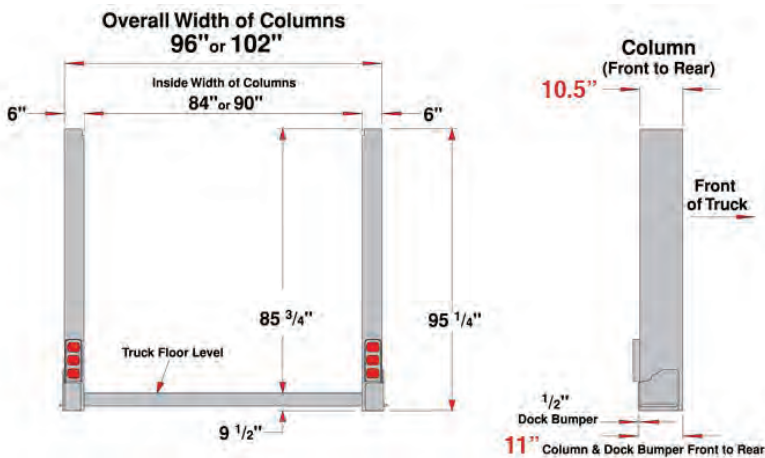
- V-Trac slider design is field proven trouble-free for nearly twenty years.
- Anthony's slider design is the cost effective alternative to rollers and related repair costs

OPTIONS

- Many Steel and Aluminum Platform Options
- Dock Header Kit with Available LED Dome Light
- TrailChargers
- eNow Solar Charge Systems
- Power down (on demand)
- Trailer Power Kits
- Anti-Slip Platform Coating
- Shock Resistant AGM Batteries
- Wireless and Corded Remote Controls

QUALITY MADE IN USA

- Every Anthony Liftgate is crafted by skilled American workers using the latest manufacturing technology.



Anthony Liftgates, Inc.

1037 W. Howard Street
P.O. Box 615
Pontiac, IL 61764-0615

Phone: 815.842.3383

Fax: 815.844.3612

Toll Free: 800.482.0003

www.anthonyliftgates.com